



Chipsmall Limited consists of a professional team with an average of over 10 year of expertise in the distribution of electronic components. Based in Hongkong, we have already established firm and mutual-benefit business relationships with customers from,Europe,America and south Asia,supplying obsolete and hard-to-find components to meet their specific needs.

With the principle of "Quality Parts,Customers Priority,Honest Operation,and Considerate Service",our business mainly focus on the distribution of electronic components. Line cards we deal with include Microchip,ALPS,ROHM,Xilinx,Pulse,ON,Everlight and Freescale. Main products comprise IC,Modules,Potentiometer,IC Socket,Relay,Connector.Our parts cover such applications as commercial,industrial, and automotives areas.

We are looking forward to setting up business relationship with you and hope to provide you with the best service and solution. Let us make a better world for our industry!



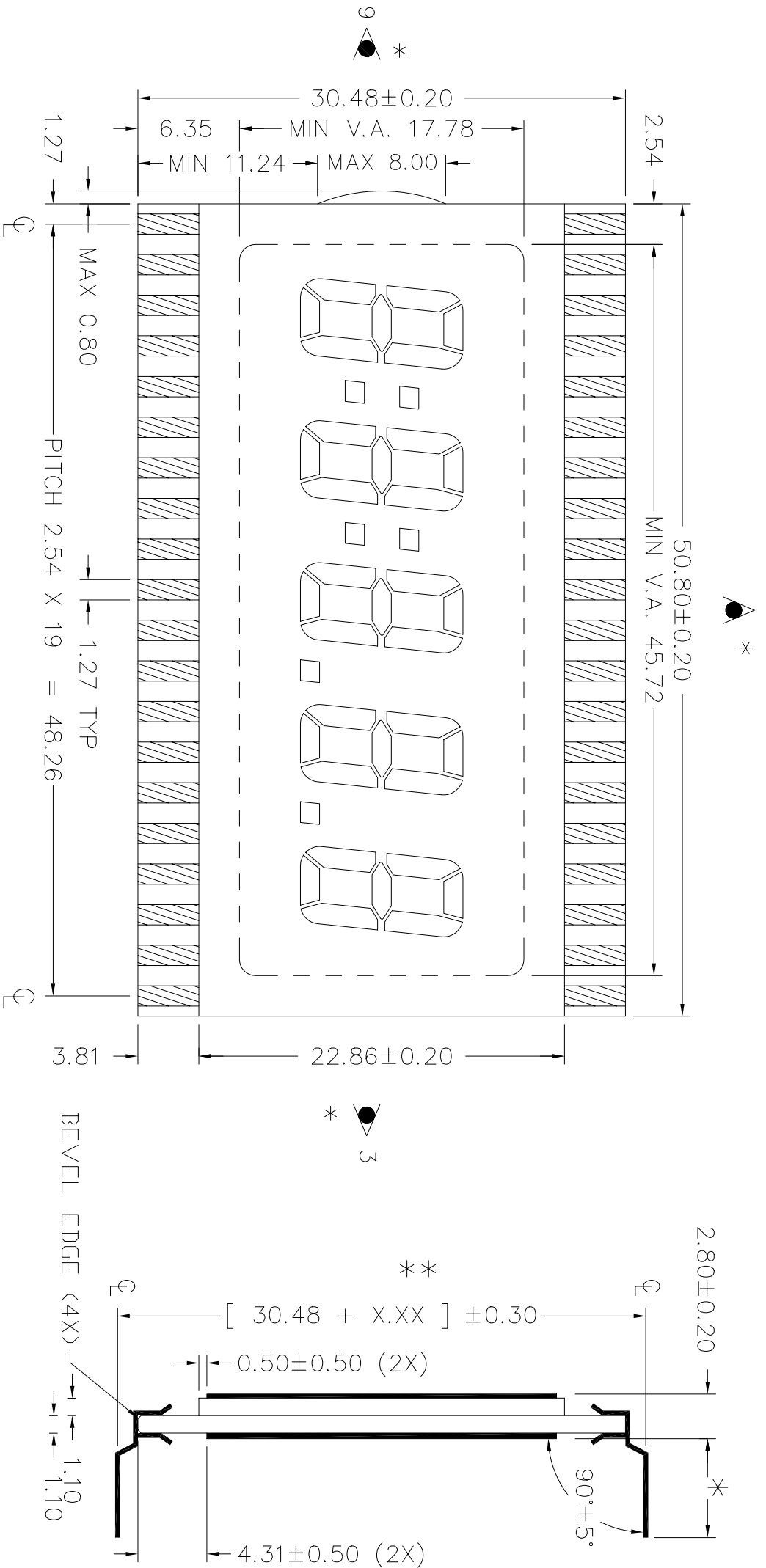
Contact us

Tel: +86-755-8981 8866 Fax: +86-755-8427 6832

Email & Skype: info@chipsmall.com Web: www.chipsmall.com

Address: A1208, Overseas Decoration Building, #122 Zhenhua RD., Futian, Shenzhen, China

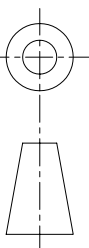




REMARKS : 1) * ----- REFER TO COVER PAGE

2) ** ----- X.XX = 2.54 (FOR PIN LENGTH ≥ 3.20 & ≤ 10.00 mm.)
 ** ----- X.XX = 1.75 (FOR PIN LENGTH > 10.00 & ≤ 19.50 mm.)

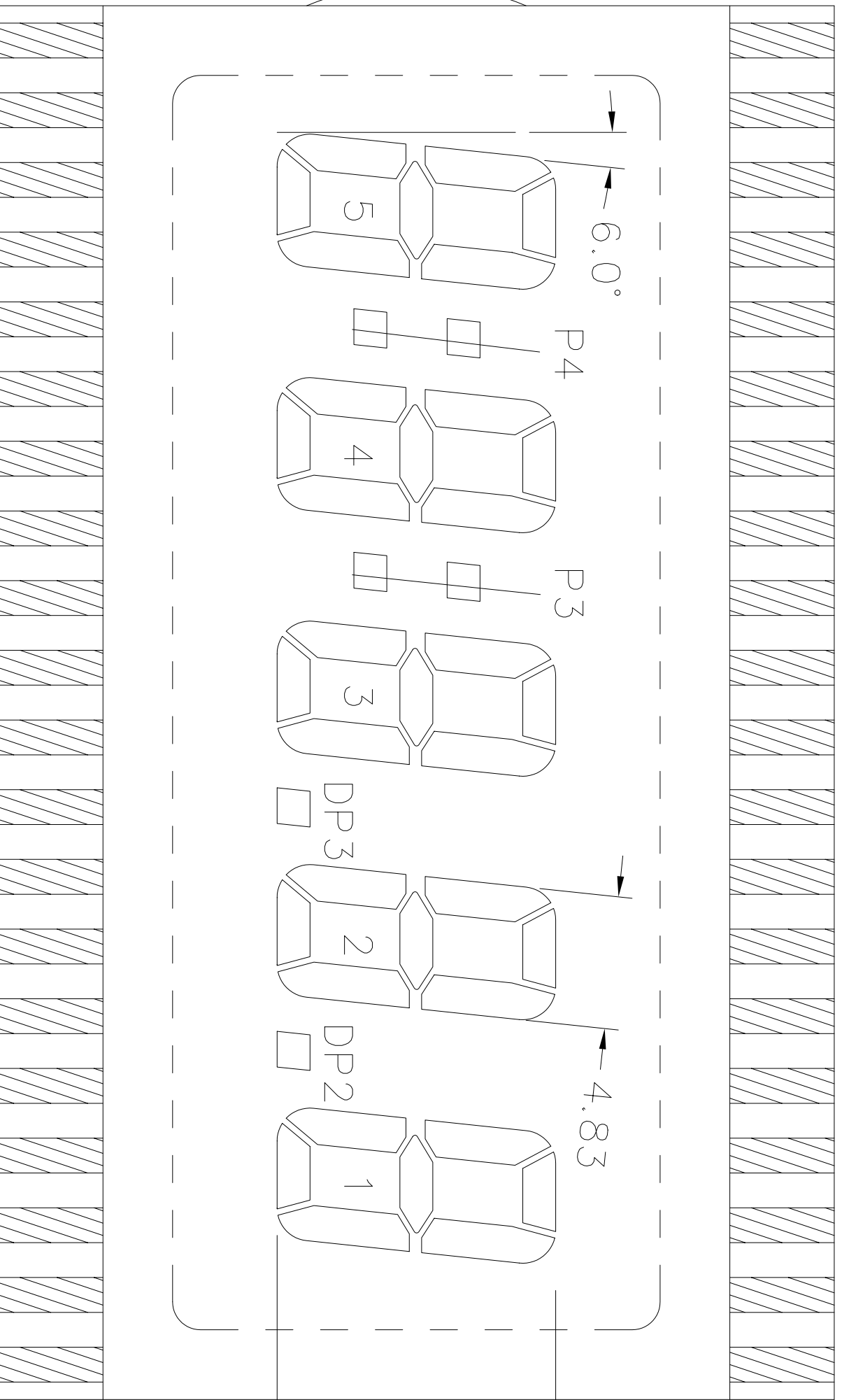
<p>DWGNO. : VI-508-DP</p>		<p>REV : 0</p>	
<p>VARITRONIX LTD.</p>		<p>Dimension : mm</p>	
<p>Drawn by : P.QJN</p>		<p>TOL : ±0.15 IF NOT SPECIFY</p>	
<p>Checked by : ERIC</p>		<p>DD NOT SCALE DRAWING</p>	
<p>SIGN :</p>		<p>Date : 2001-05-17</p>	
<p>SIGN :</p>		<p>3rd ANGLE PROJECTION</p>	



DWG.NO. : VI-508-DP (REV.0)

PIN40

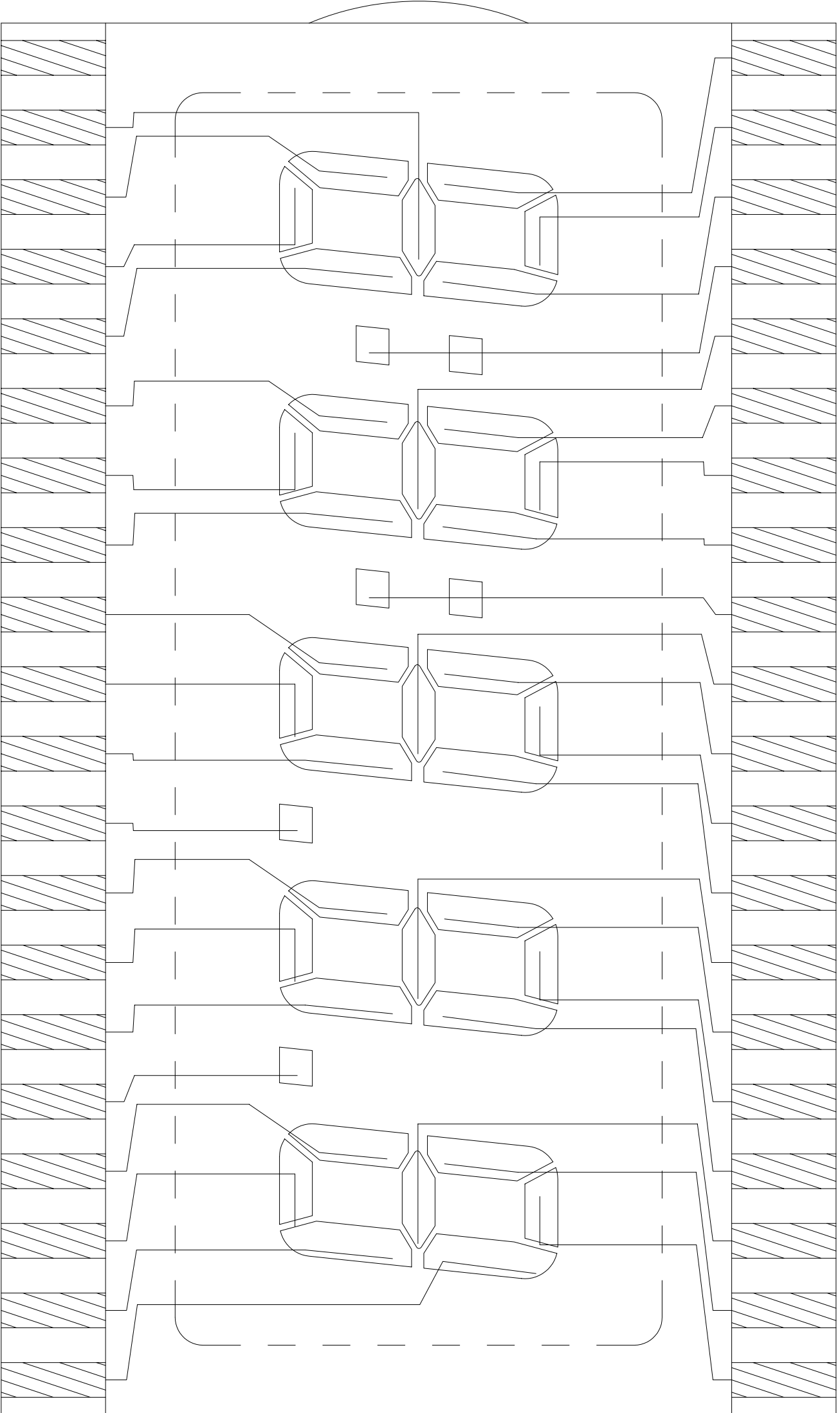
PIN21



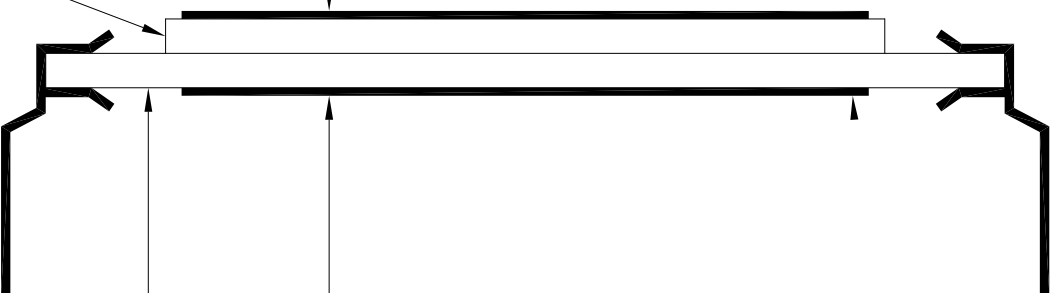
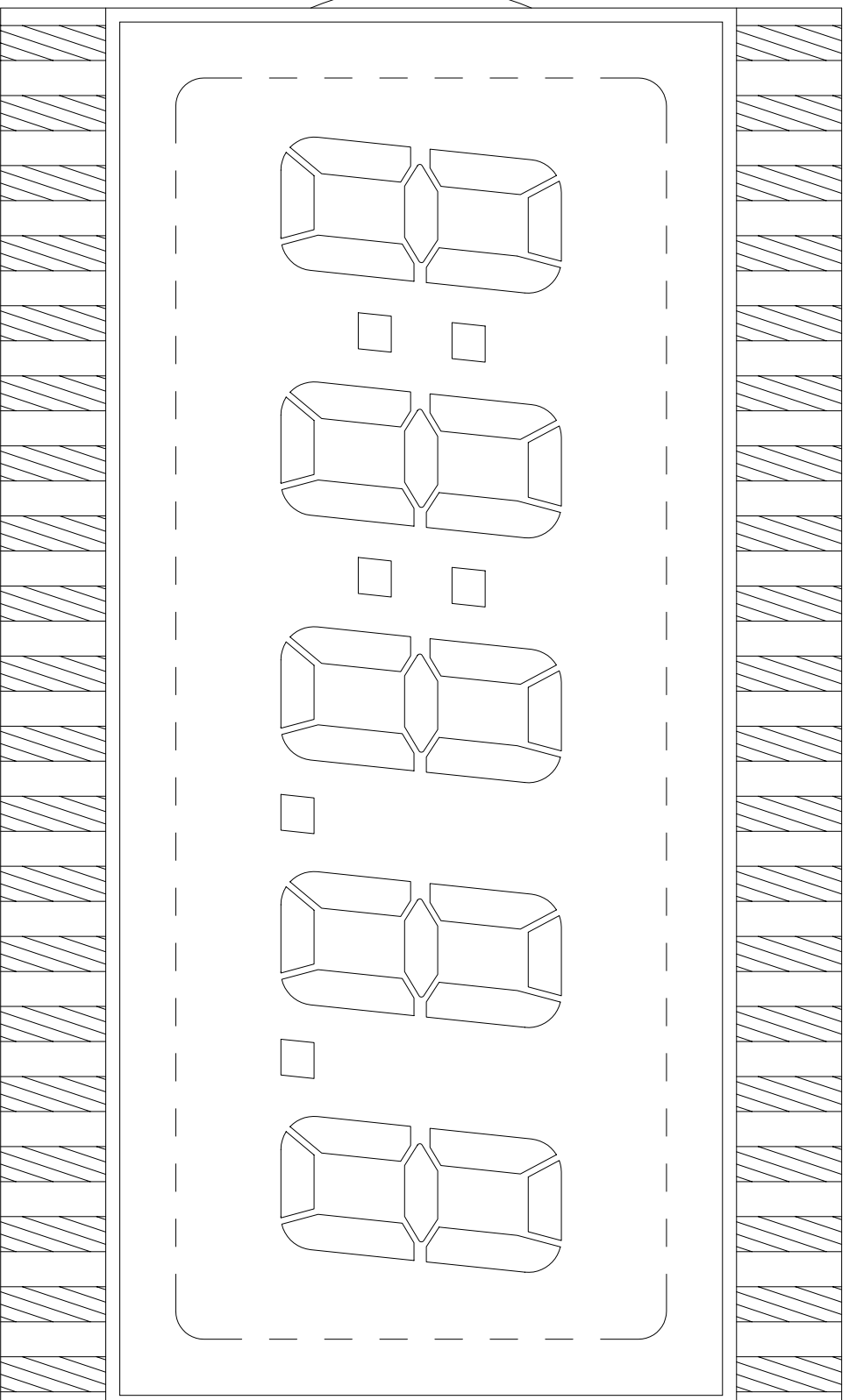
PIN1

PIN20

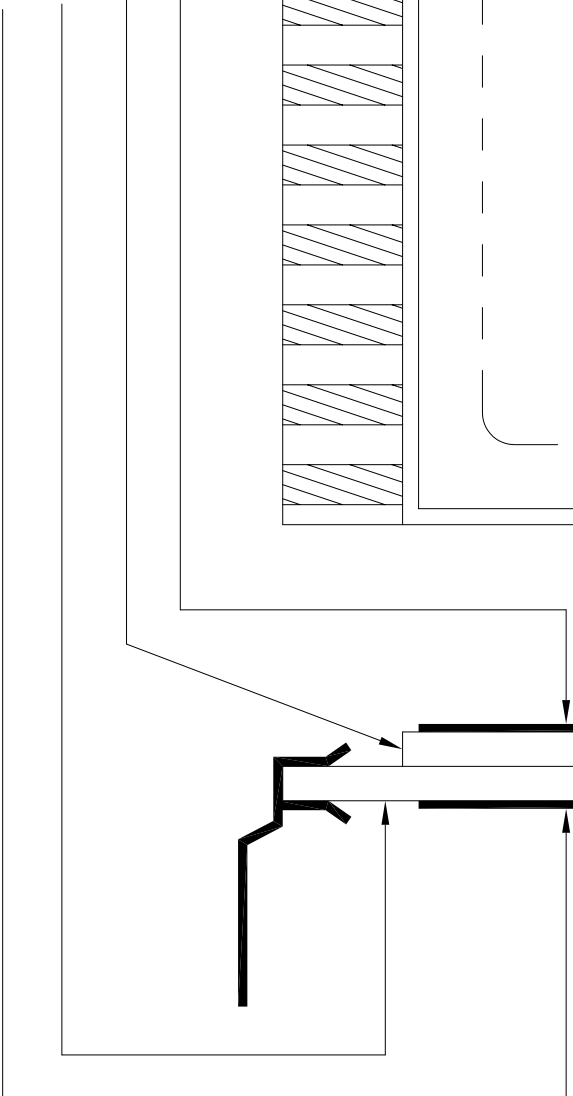
DWG. NO. : VI-508-DP (REV.0)
SEGMENT TRACKING



DWG.NO. : VI-508-DP (REV.0)



FRONT POLARIZER
FRONT GLASS
BACK GLASS
BACK POLARIZER



DWG.NO. : VI-508-DP (REV.0)

PIN	SEG	PIN	SEG
1	COM	21	1A
2	5G	22	1F
3	5E	23	1G
4	5D	24	2B
5	5C	25	2A
6	4E	26	2F
7	4D	27	2G
8	4C	28	3B
9	3E	29	3A
10	3D	30	3F
11	3C	31	3G
12	DP3	32	P3
13	2E	33	4B
14	2D	34	4A
15	2C	35	4F
16	DP2	36	4G
17	1E	37	P4
18	1D	38	5B
19	1C	39	5A
20	1B	40	5F