



Chipsmall Limited consists of a professional team with an average of over 10 year of expertise in the distribution of electronic components. Based in Hongkong, we have already established firm and mutual-benefit business relationships with customers from,Europe,America and south Asia,supplying obsolete and hard-to-find components to meet their specific needs.

With the principle of “Quality Parts,Customers Priority,Honest Operation,and Considerate Service”,our business mainly focus on the distribution of electronic components. Line cards we deal with include Microchip,ALPS,ROHM,Xilinx,Pulse,ON,Everlight and Freescale. Main products comprise IC,Modules,Potentiometer,IC Socket,Relay,Connector.Our parts cover such applications as commercial,industrial, and automotives areas.

We are looking forward to setting up business relationship with you and hope to provide you with the best service and solution. Let us make a better world for our industry!



Contact us

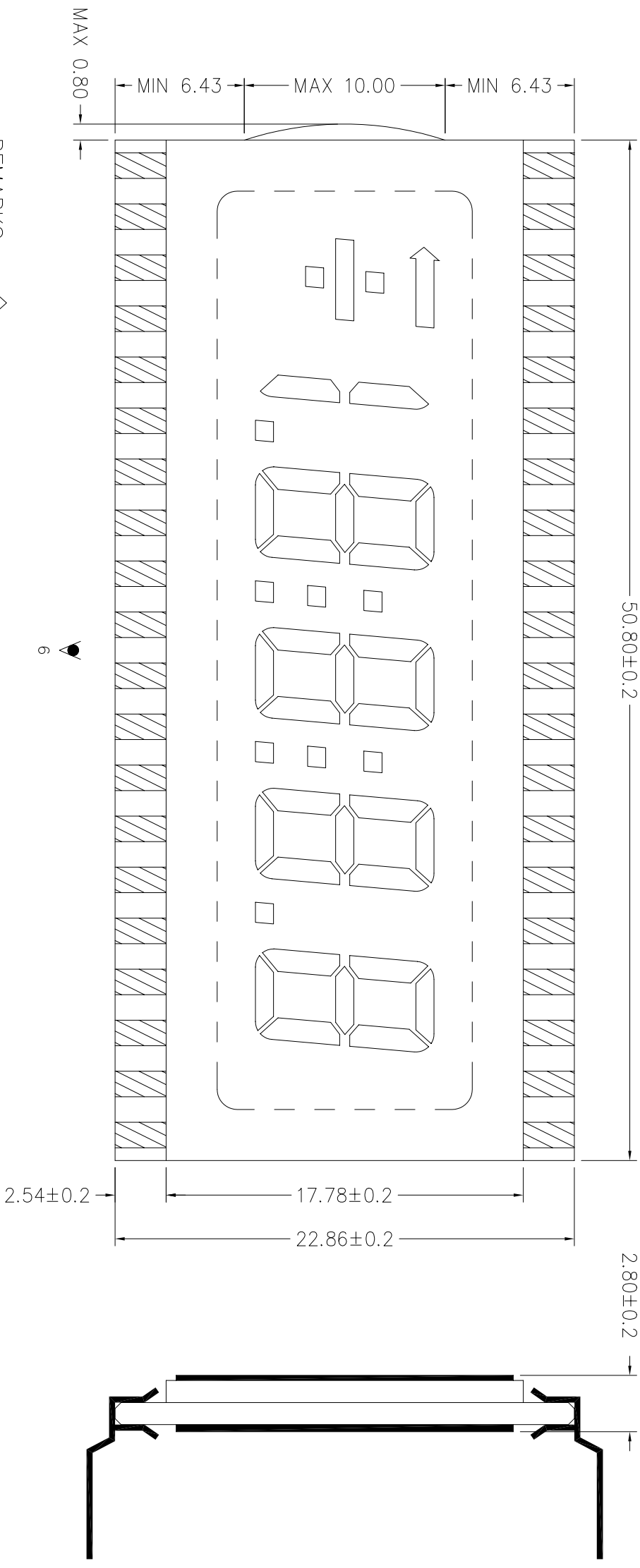
Tel: +86-755-8981 8866 Fax: +86-755-8427 6832

Email & Skype: info@chipsmall.com Web: www.chipsmall.com

Address: A1208, Overseas Decoration Building, #122 Zhenhua RD., Futian, Shenzhen, China



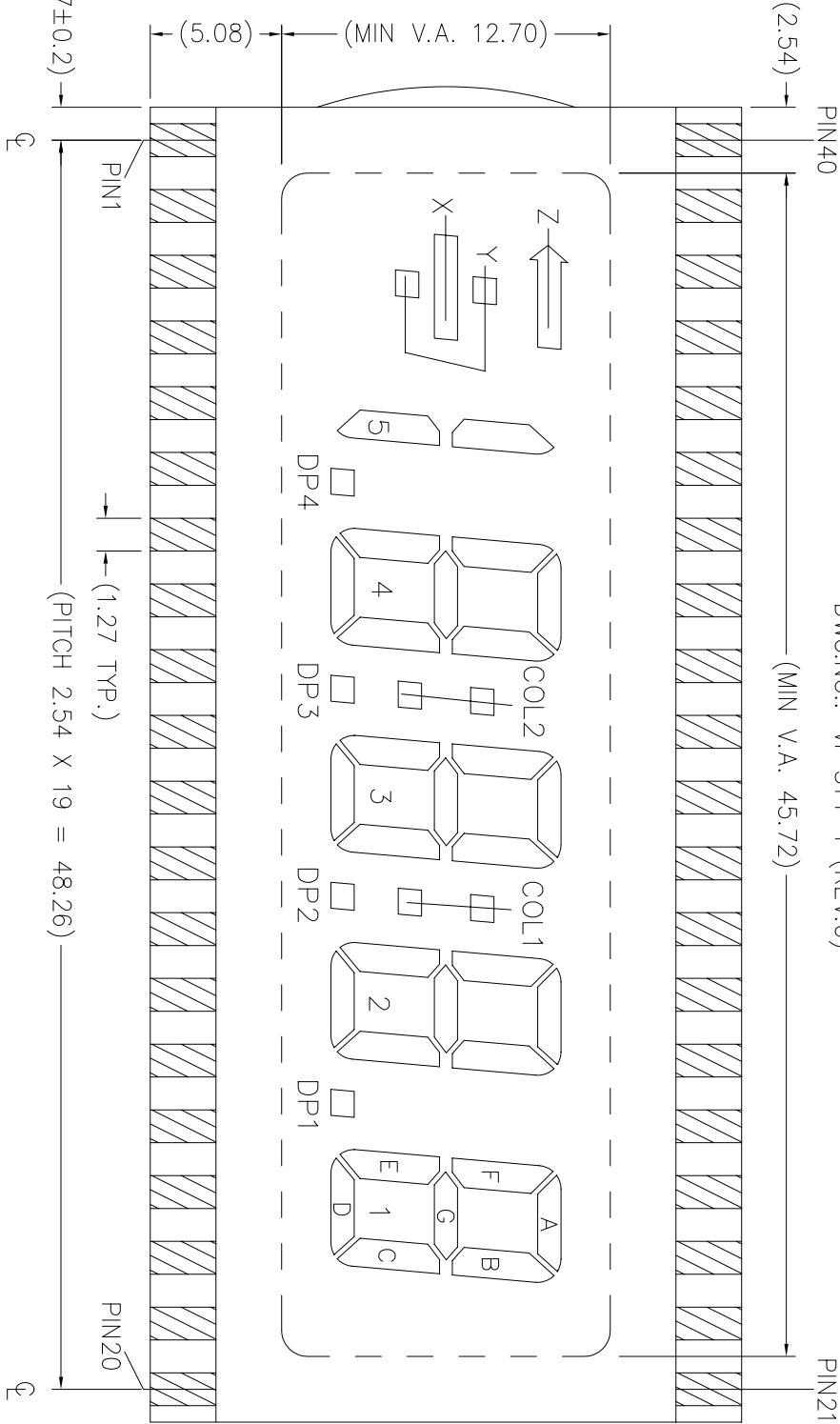
LAYOUT INSPECTION



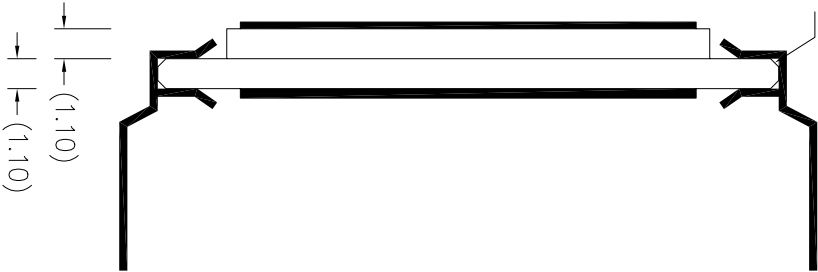
REMARKS: "◇" SPECIAL CHARACTERISTIC
" + " SAFETY CHARACTERISTIC
" () " REFERENCE ONLY

VARTTRONIX LTD.		Dimension : mm		TOL : ±0.2 IF NOT SPECIFY		DO NOT SCALE DRAWING	
DWG.ND. : VI-514-1	REV 0	Drawn by : ZHP		SIGN :		Date : 2004-12-04	
Checked by : YIN		SIGN :		Date :		3rd ANGLE PROJECTION	

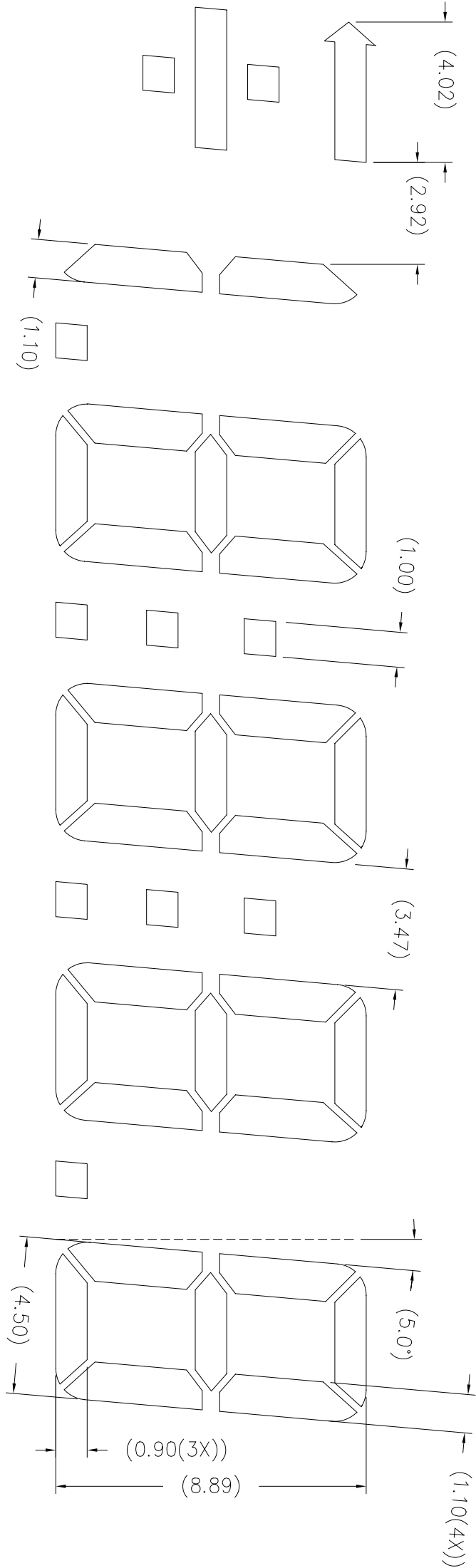
DWG.NO.: VI-514-1 (REV.0)



(BEVEL EDGE(4X))

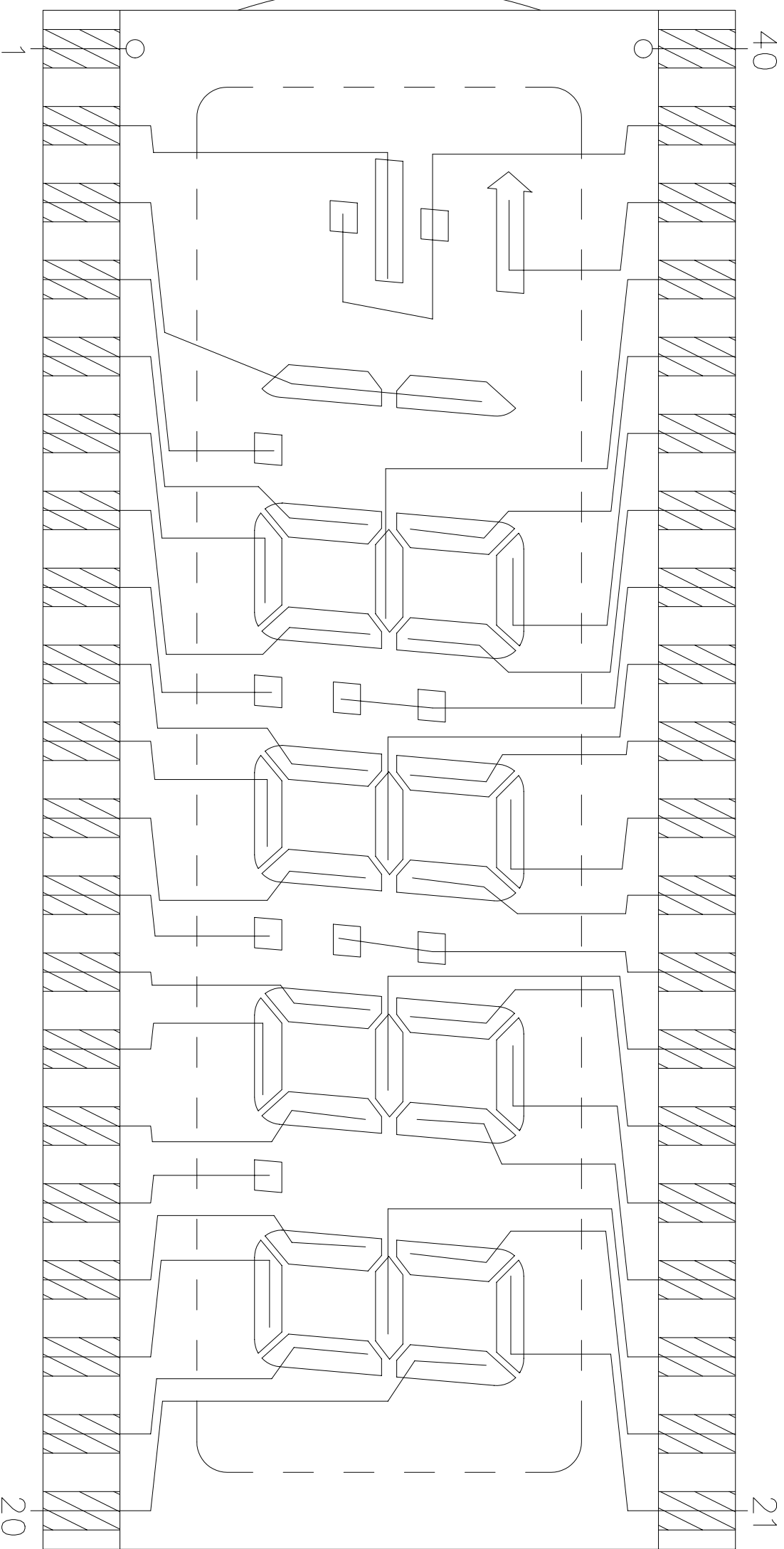


DWG.NO.: VI-514-1 (REV.0)



DWG.NO.: VI-514-1 (REV.0)

SEGMENT TRACKING

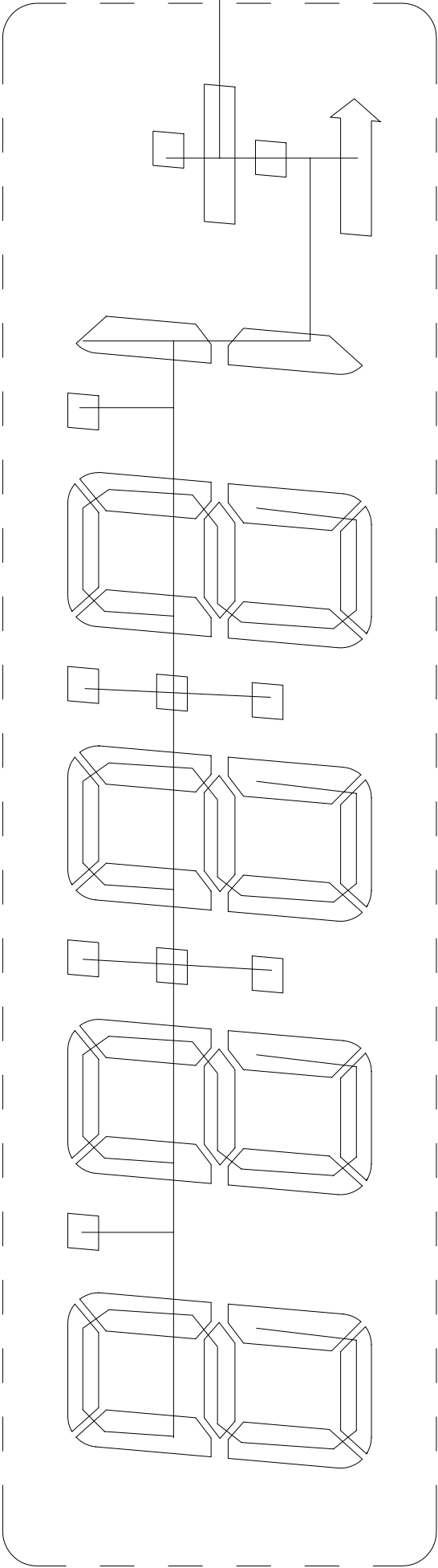


COMMON TRACKING

COM

40

21



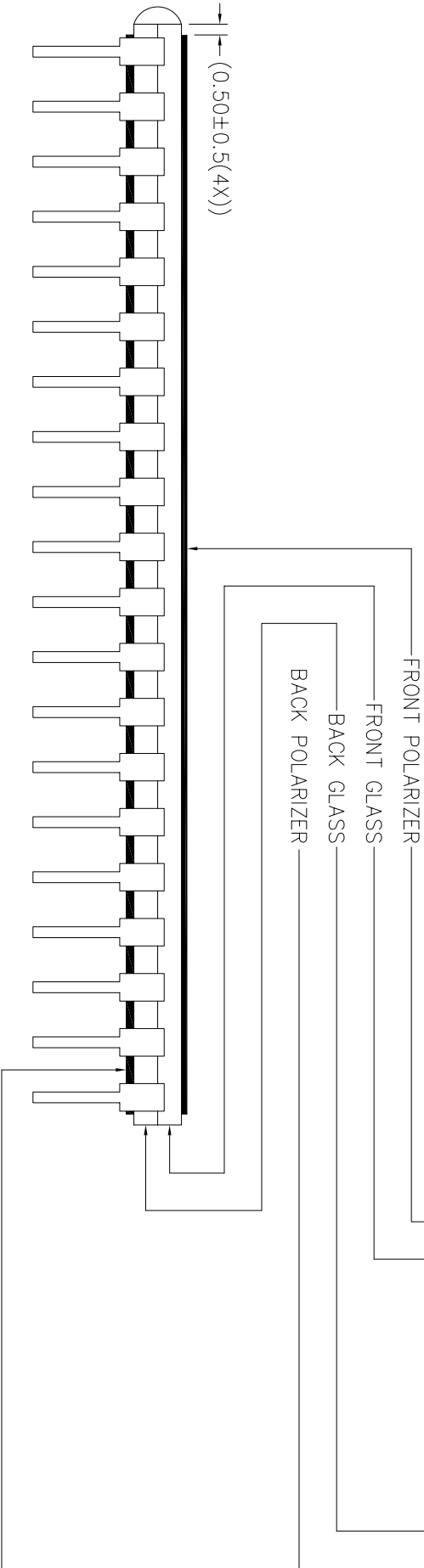
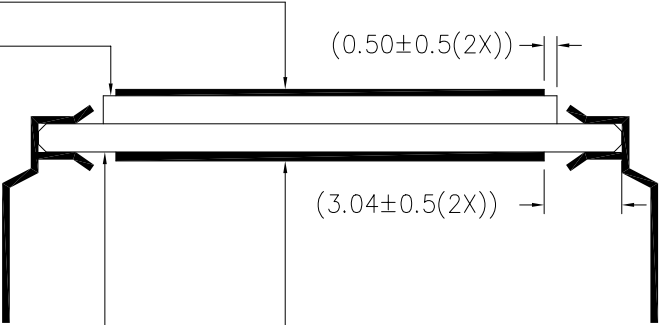
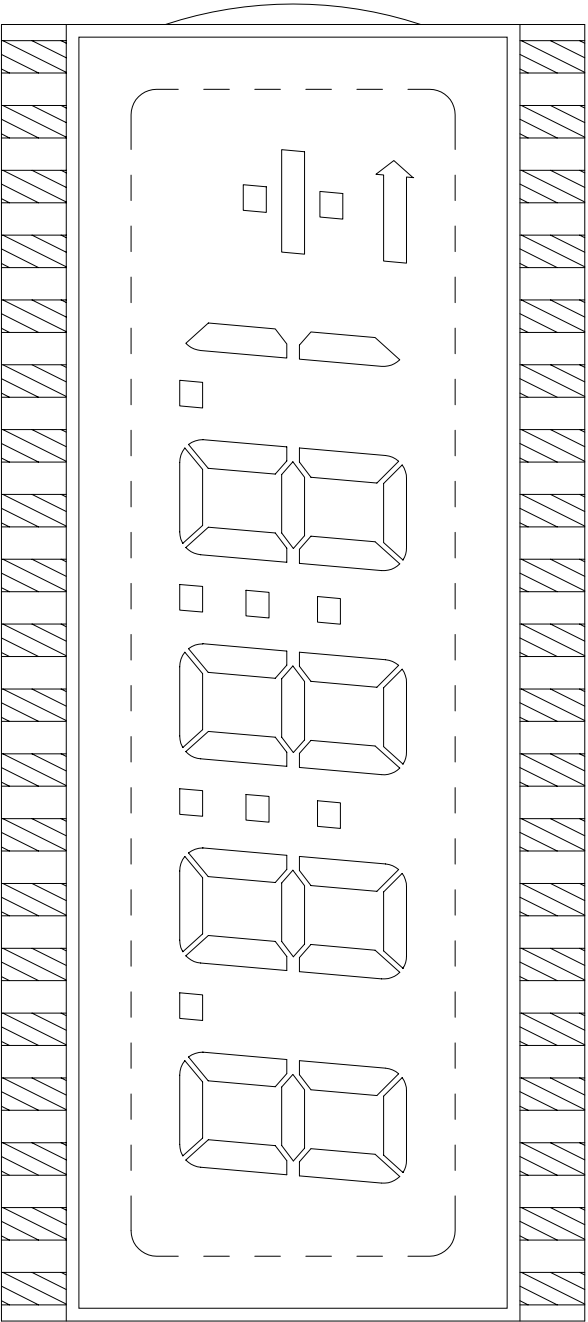
20

COM

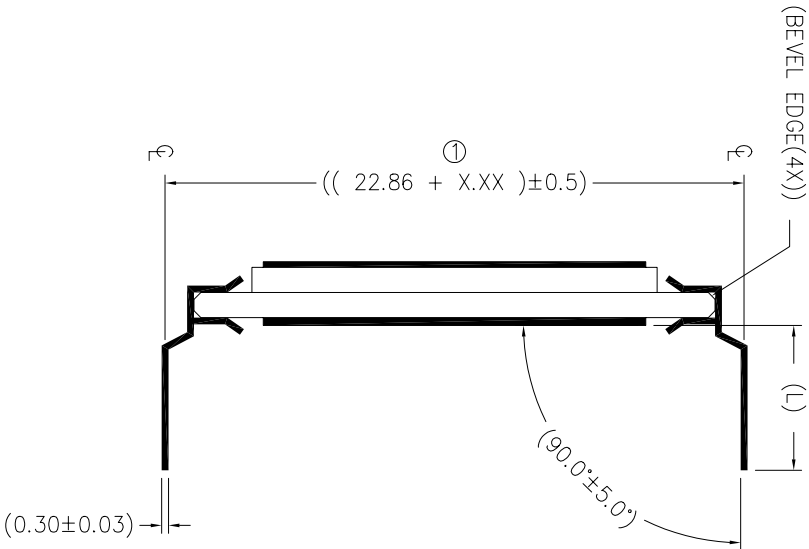
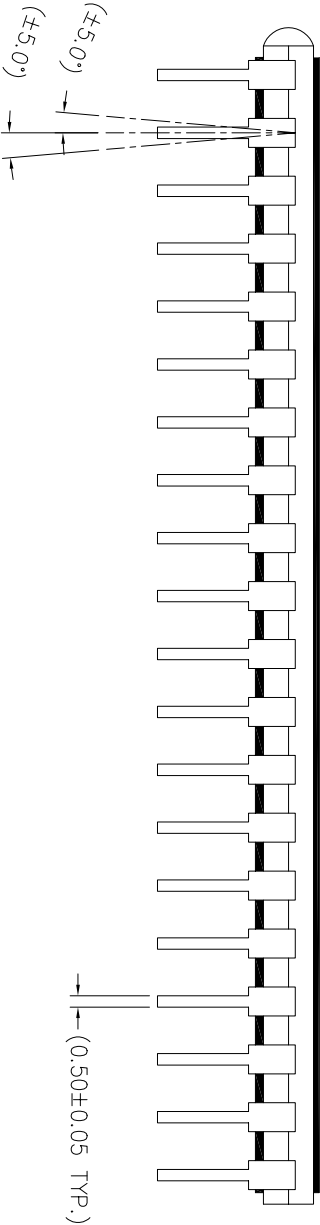
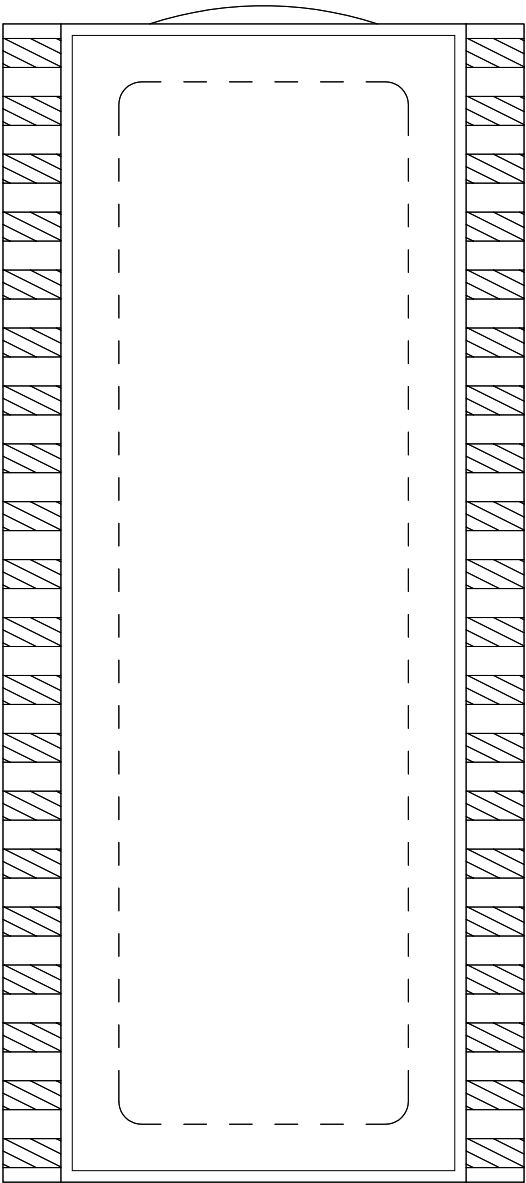
1

REMARKS: SAME COMMON SHOULD BE CONNECTED TOGETHER ON THE P.C.B.

VARITRONIX LIMITED		OPEN LAYER :	SCALE
POLARIZER LOCATION DIAGRAM		P	Do not scale
DOC. NO. : PL-VI-514-1-01		Drawn by : ZHP	Date : 2004-12-04
		Checked by : INA	Date : 2004-12-04
		Approval by :	Date : 2004-12-04



VARITRONIX LIMITED		OPEN LAYER : DP-L0		SCALE	
DIL-PIN DETAILS LOCATION DIAGRAM				Do not scale	
DOC. NO. : DP-VI-514-1-01		Drawn by : ZHP		Date : 2004-12-04	
		Checked by : INA		Date : 2004-12-04	
ALL DIMENSIONS IN mm		Approval by :		Date : 2004-12-04	



REMARKS: PIN LENGTH (L) REFER TO COVER PAGE

① ----- X.XX=2.54 (FOR PIN LENGTH ≥ 3.20 & ≤ 10.00mm)

X.XX=1.75 (FOR PIN LENGTH > 10.00 & ≤ 19.50mm)

DWG.NO.: VI-514-1 (REV.0)

PIN	COM	PIN	COM	PIN	COM	PIN	COM
1	COM	11	3C	21	1A	31	3F
2	X	12	DP2	22	1F	32	3G
3	5B,C	13	2E	23	1G	33	COL2
4	DP4	14	2D	24	2B	34	4B
5	4E	15	2C	25	2A	35	4A
6	4D	16	DP1	26	2F	36	4F
7	4C	17	1E	27	2G	37	4G
8	DP3	18	1D	28	COL1	38	Z
9	3E	19	1C	29	3B	39	Y
10	3D	20	1B	30	3A	40	COM

REMARKS : SAME COMMON SHOULD BE CONNECTED TOGETHER ON P.C.B.