



Chipsmall Limited consists of a professional team with an average of over 10 year of expertise in the distribution of electronic components. Based in Hongkong, we have already established firm and mutual-benefit business relationships with customers from,Europe,America and south Asia,supplying obsolete and hard-to-find components to meet their specific needs.

With the principle of “Quality Parts,Customers Priority,Honest Operation,and Considerate Service”,our business mainly focus on the distribution of electronic components. Line cards we deal with include Microchip,ALPS,ROHM,Xilinx,Pulse,ON,Everlight and Freescale. Main products comprise IC,Modules,Potentiometer,IC Socket,Relay,Connector.Our parts cover such applications as commercial,industrial, and automotives areas.

We are looking forward to setting up business relationship with you and hope to provide you with the best service and solution. Let us make a better world for our industry!



Contact us

Tel: +86-755-8981 8866 Fax: +86-755-8427 6832

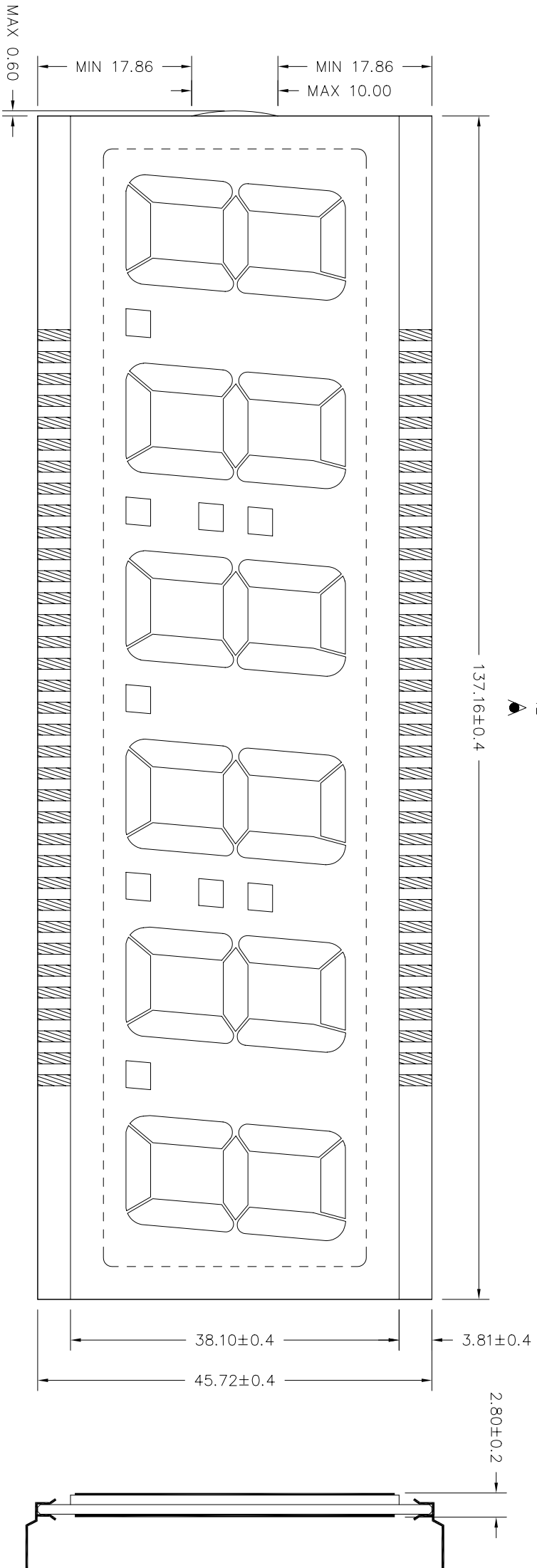
Email & Skype: info@chipsmall.com Web: www.chipsmall.com

Address: A1208, Overseas Decoration Building, #122 Zhenhua RD., Futian, Shenzhen, China



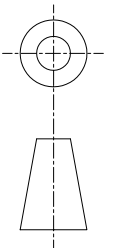
LAYOUT INSPECTION

12



REMARKS: "◇" SPECIAL CHARACTERISTIC
 " + " SAFETY CHARACTERISTIC
 " () " REFERENCE ONLY

VARITRONIX LTD.		Dimension : mm		TOL : ±0.4 IF NOT SPECIFY		DO NOT SCALE DRAWING		3 rd ANGLE PROJECTION	
DWG NO. :	VI-6111-10	REV	0	Drawn by :	QMZ	SIGN :		Date :	2004-11-29
		Checked by :		YIN		SIGN :			

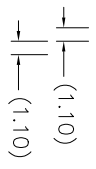
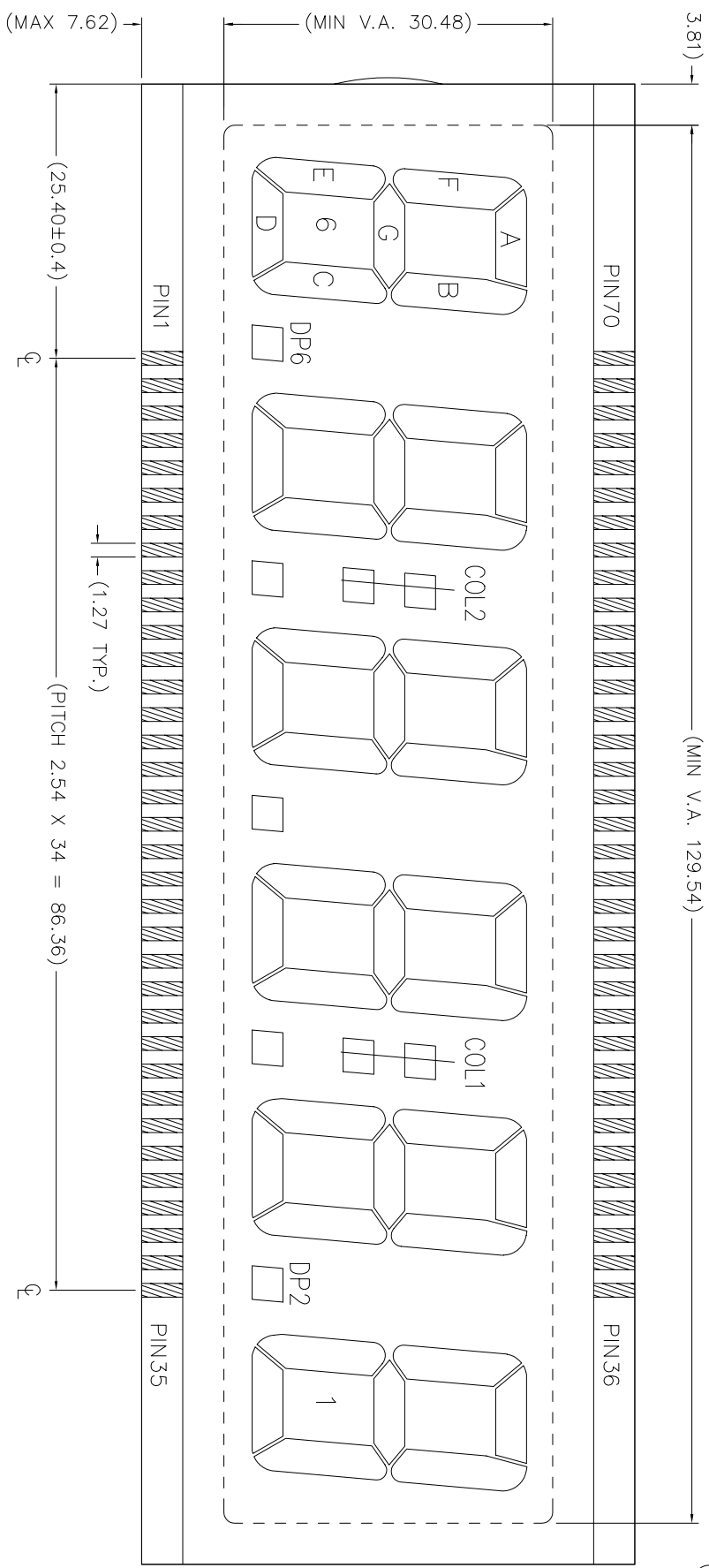


DWG. NO.: VI-611-1 (REV.0)

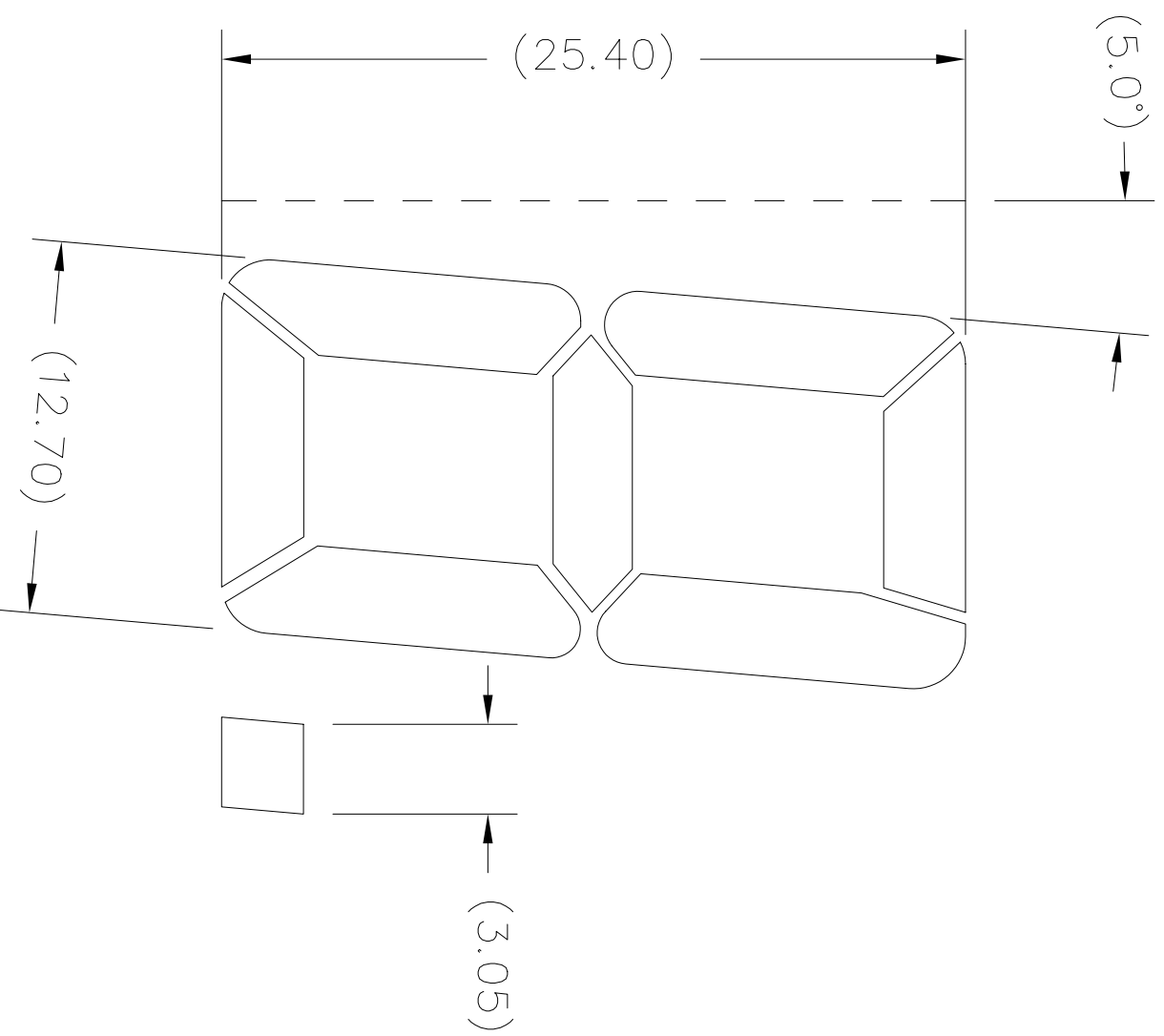
(MAX 3.81)

(MIN V.A. 129.54)

(BEVEL EDGE(4X))



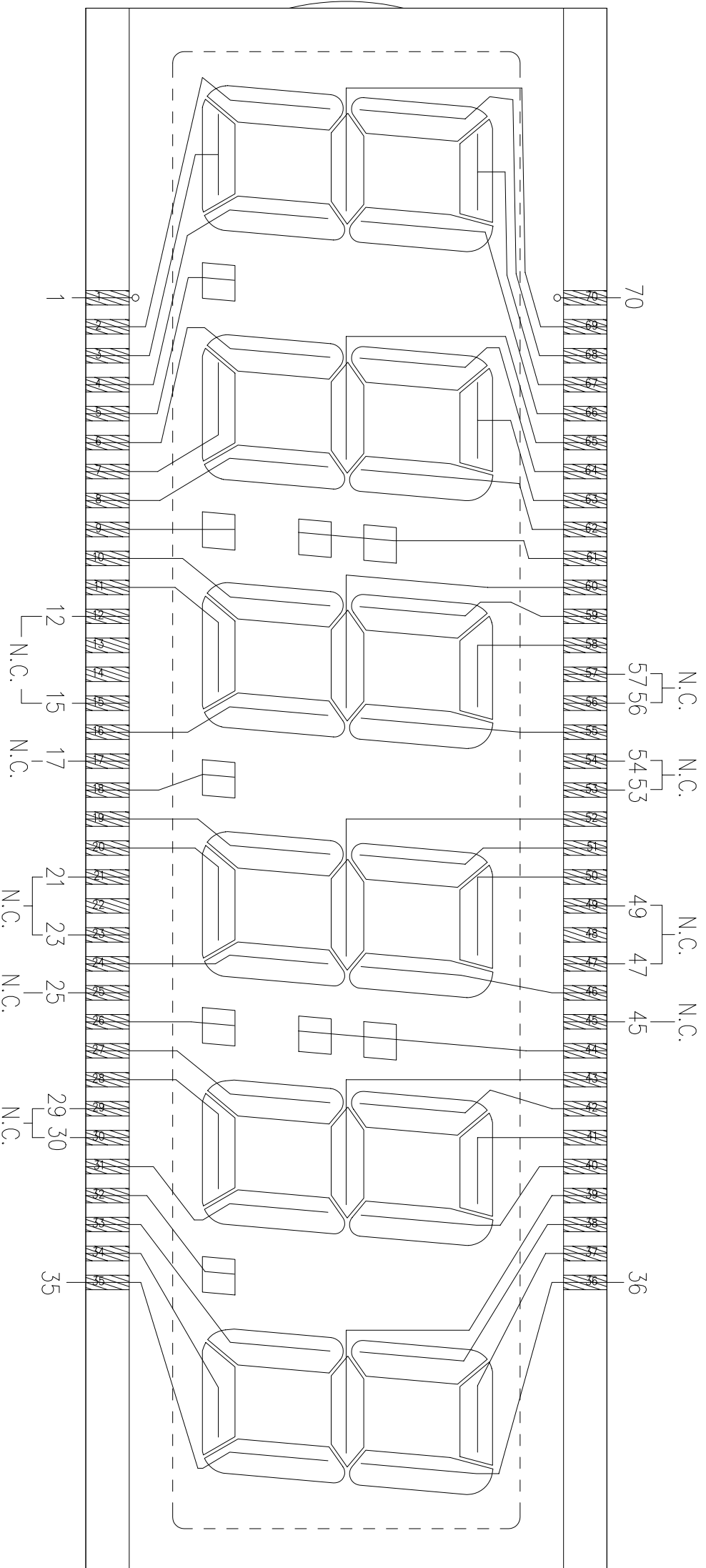
DWG. NO. : VI-611-1 (REV. 0)



DIGIT 1 - 6

DWG. NO.: VI-611-1 (REV.0)

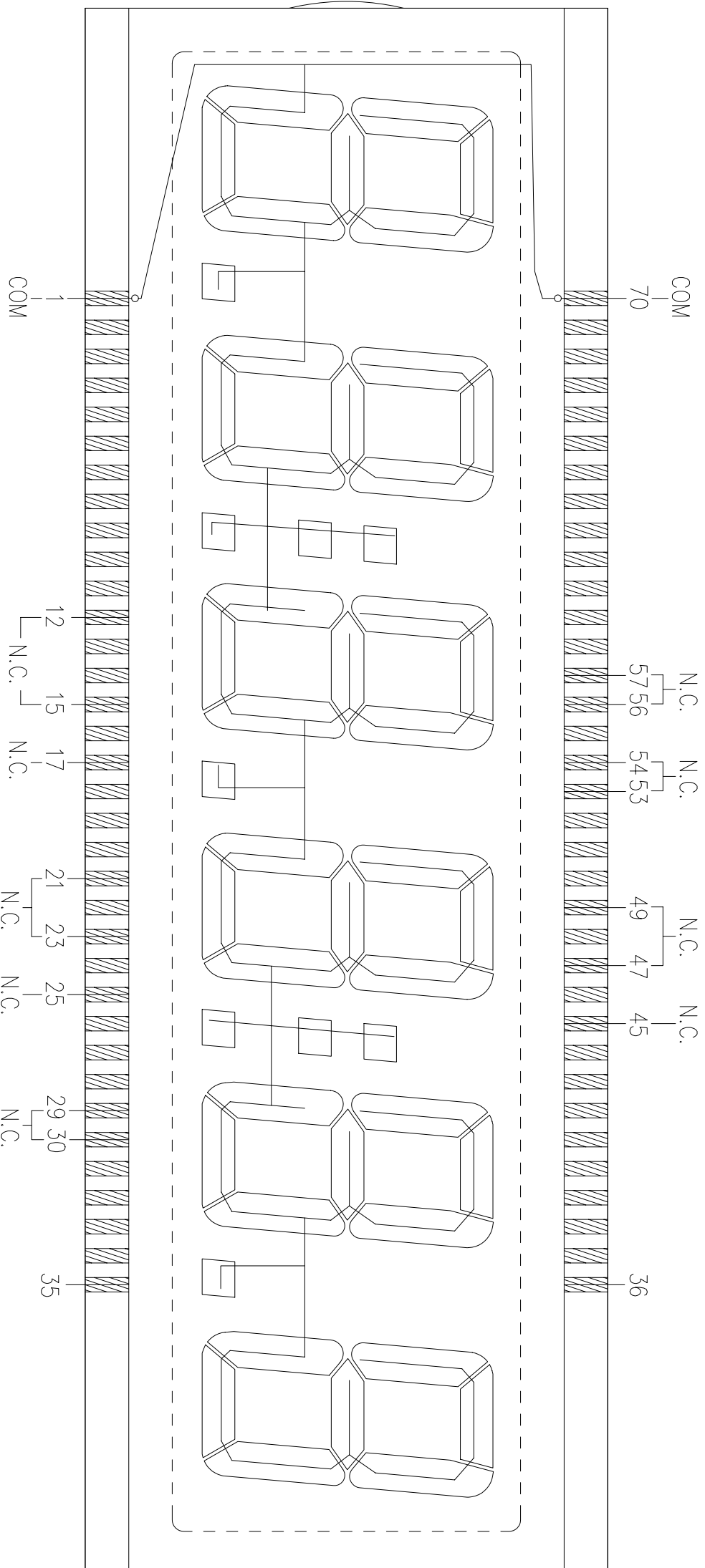
SEGMENT TRACKING



REMARKS: N.C. = NO CONNECTION

DWG. NO.: VI-611-1 (REV.0)

COMMON TRACKING

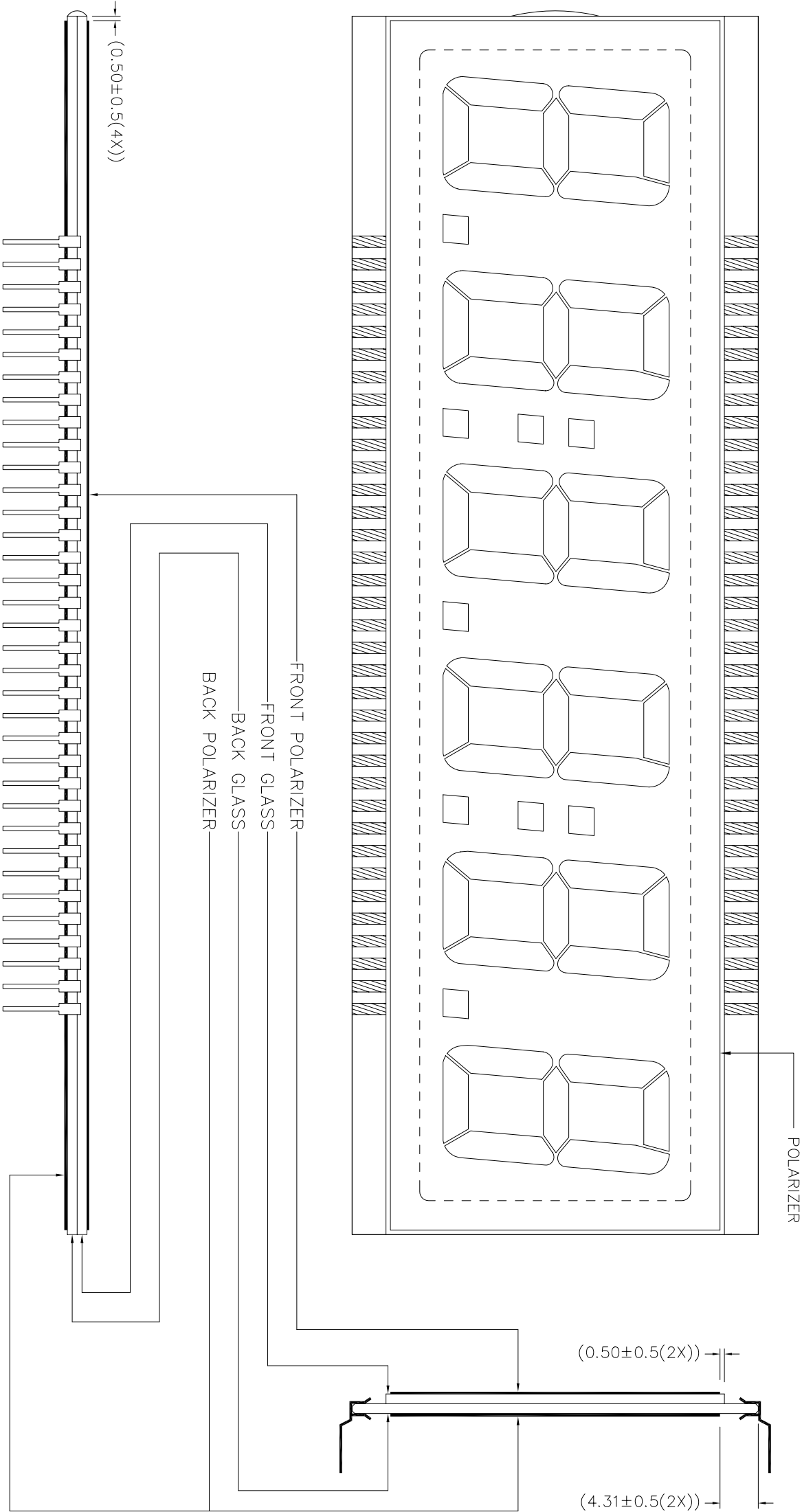


REMARKS : SAME COMMON SHOULD BE CONNECTED TOGETHER ON P.C.B.

N.C. = NO CONNECTION

VARTTRONIX LIMITED		OPEN LAYER :	SCALE
POLARIZER LOCATION DIAGRAM		P	Do not scale

DOC. NO. : PL-VI-611-1-01	Drawn by : QNZ	Date : 2004-12-02
	Checked by : INA	Date : 2004-12-02
	Approval by :	Date : 2004-12-02



OPEN LAYER :

P

SCALE

Do not scale

Drawn by : QNZ

Date : 2004-12-02

Checked by : INA

Date : 2004-12-02

Approval by :

Date : 2004-12-02

POLARIZER

$(0.50 \pm 0.5(2X))$

$(4.31 \pm 0.5(2X))$

FRONT POLARIZER

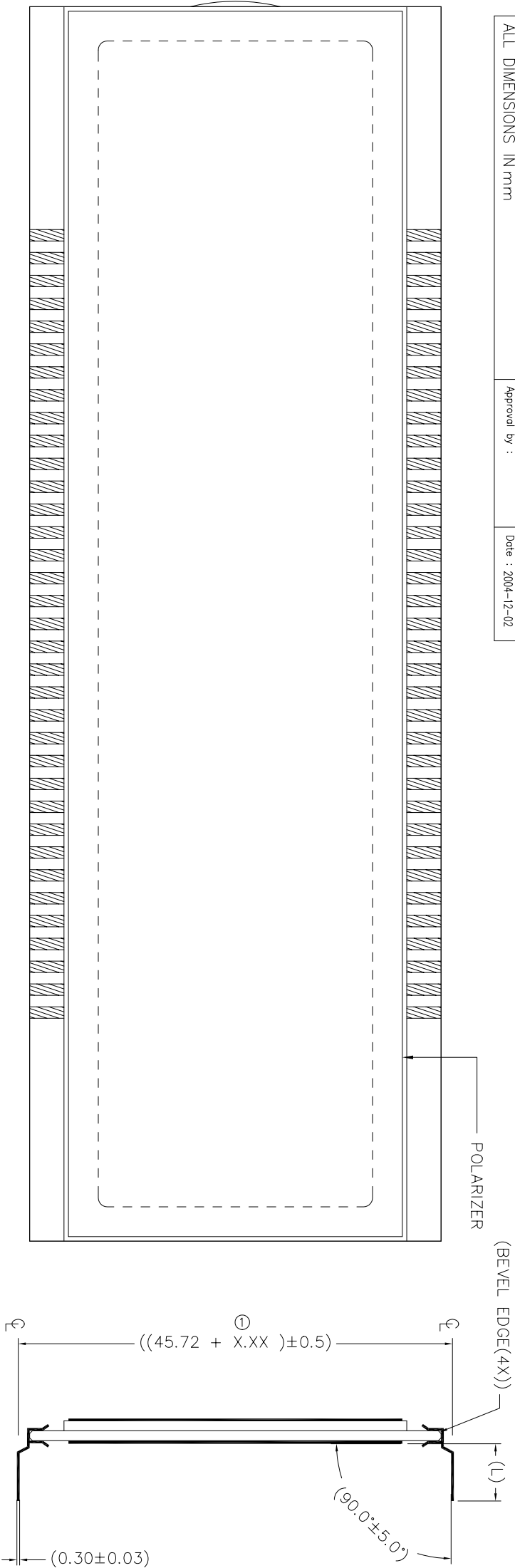
FRONT GLASS

BACK GLASS

BACK POLARIZER

$(0.50 \pm 0.5(4X))$

VARITRONIX LIMITED		OPEN LAYER : DP-L0	SCALE Do not scale
DIL-PIN DETAILS LOCATION DIAGRAM		Drawn by : QM2	Date : 2004-11-29
DOC. NO. : DP-VI-611-1-01		Checked by : INA	Date : 2004-12-02
ALL DIMENSIONS IN mm		Approval by :	Date : 2004-12-02



REMARKS: Ⓣ----- X.XX=2.54 (FOR PIN LENGTH > 3.2 & ≤ 10.00mm)
X.XX=1.75 (FOR PIN LENGTH > 10.00 & ≤ 19.50mm)
PIN LENGTH (L) REFER TO COVER PAGE

DWG.NO. : VI-611-1 (REV.0)

PIN	COM	PIN	COM	PIN	COM	PIN	COM
1	COM	19	3E	37	1A	55	4B
2	6E	20	3D	38	1F	56-57	N.C.
3	6D	21-23	N.C.	39	1G	58	4A
4	6C	24	3C	40	2B	59	4F
5	DP6	25	N.C.	41	2A	60	4G
6	5E	26	DP3	42	2F	61	COL2
7	5D	27	2E	43	2G	62	5B
8	5C	28	2D	44	COL1	63	5A
9	DP5	29-30	N.C.	45	N.C.	64	5F
10	4E	31	2C	46	3B	65	5G
11	4D	32	DP2	47-49	N.C.	66	6B
12-15	N.C.	33	1E	50	3A	67	6A
16	4C	34	1D	51	3F	68	6F
17	N.C.	35	1C	52	3G	69	6G
18	DP4	36	1B	53-54	N.C.	70	COM

REMARKS : SAME COMMON SHOULD BE CONNECTED TOGETHER ON P.C.B.
N.C. = NO CONNECTION