



Chipsmall Limited consists of a professional team with an average of over 10 year of expertise in the distribution of electronic components. Based in Hongkong, we have already established firm and mutual-benefit business relationships with customers from,Europe,America and south Asia,supplying obsolete and hard-to-find components to meet their specific needs.

With the principle of "Quality Parts,Customers Priority,Honest Operation,and Considerate Service",our business mainly focus on the distribution of electronic components. Line cards we deal with include Microchip,ALPS,ROHM,Xilinx,Pulse,ON,Everlight and Freescale. Main products comprise IC,Modules,Potentiometer,IC Socket,Relay,Connector.Our parts cover such applications as commercial,industrial, and automotives areas.

We are looking forward to setting up business relationship with you and hope to provide you with the best service and solution. Let us make a better world for our industry!



Contact us

Tel: +86-755-8981 8866 Fax: +86-755-8427 6832

Email & Skype: info@chipsmall.com Web: www.chipsmall.com

Address: A1208, Overseas Decoration Building, #122 Zhenhua RD., Futian, Shenzhen, China



Specification Status: Released

Maximum Electrical Rating
Operating Voltage: **16Vdc**
Interrupt Current: **60A**

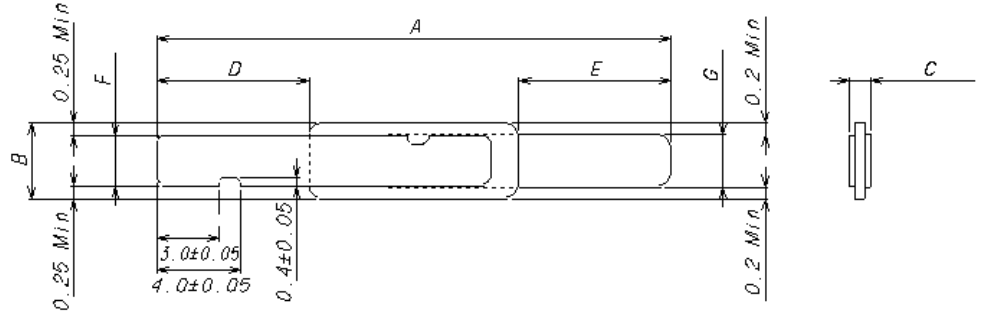
Chip Size: 3.6 X 10 mm

Leads: Nickel 1/4H
0.125mm nominal thickness

Solder: Lead-free

Tape: None

Marking: None



*Dimensions on the drawing are for reference only.

TABLE I. DIMENSIONS:

	A		B		C		D		E		F		G	
	MIN	MAX	MIN	MAX	MIN	MAX	MIN	MAX	MIN	MAX	MIN	MAX	MIN	MAX
mm:	23.6	25.6	3.55	3.65	---	0.7	6.8	7.8	6.8	7.8	2.35	2.45	2.45	2.55
In*:	0.944	1.024	0.142	0.146	---	0.028	0.27	0.31	0.27	0.31	0.094	0.098	0.098	0.102

*Rounded off approximation

TABLE II. PERFORMANCE RATINGS: As measured in Mueller Kelvin Clips model BU-75K.

I HOLD	CURRENT TRIP LIMITS									TIME TO TRIP	REFERENCE RESISTANCE	ONE-HOUR POST-TRIP RESISTANCE	TRIPPED-STATE POWER DISSIPATION		
	AMPS 25°C HOLD		AMPS AT 0°C HOLD TRIP		AMPS AT 25°C HOLD TRIP		AMPS AT 60°C HOLD TRIP		AMPS AT -°C HOLD TRIP					OHMS AT 25°C MIN MAX	
2.2	3.0	7.0	2.2	5.3	1.1	3.1	---	---	---	5.0	0.017	0.029	0.017	0.058	1.8

Recognitions:
Reference Documents:
Precedence:
Effectivity:
CAUTION:

UL, TUV, CSA
PS300
This specification takes precedence over documents referenced herein.
Reference documents shall be the issue in effect on the date of invitation for bid.
Operation beyond the rated voltage or current may result in rupture, electrical arcing or flame.

Materials Information:
ROHS Compliant

ELV Compliant

Pb-Free

Directive 2000/53/EC
Compliant

Directive 2002/95/EC
Compliant

