



Chipsmall Limited consists of a professional team with an average of over 10 year of expertise in the distribution of electronic components. Based in Hongkong, we have already established firm and mutual-benefit business relationships with customers from,Europe,America and south Asia,supplying obsolete and hard-to-find components to meet their specific needs.

With the principle of “Quality Parts,Customers Priority,Honest Operation,and Considerate Service”,our business mainly focus on the distribution of electronic components. Line cards we deal with include Microchip,ALPS,ROHM,Xilinx,Pulse,ON,Everlight and Freescale. Main products comprise IC,Modules,Potentiometer,IC Socket,Relay,Connector.Our parts cover such applications as commercial,industrial, and automotives areas.

We are looking forward to setting up business relationship with you and hope to provide you with the best service and solution. Let us make a better world for our industry!



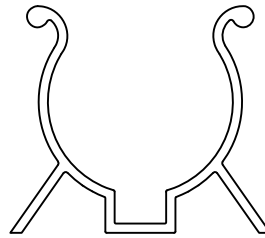
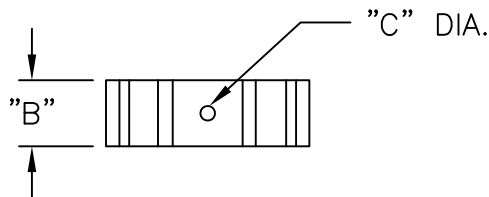
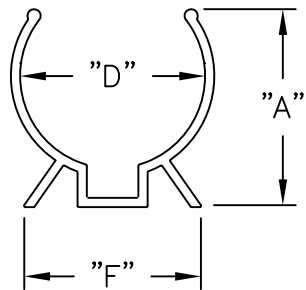
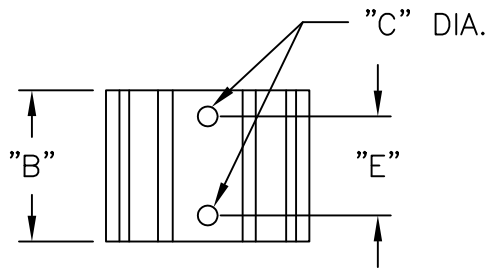
Contact us

Tel: +86-755-8981 8866 Fax: +86-755-8427 6832

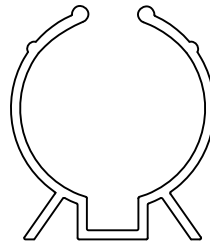
Email & Skype: info@chipsmall.com Web: www.chipsmall.com

Address: A1208, Overseas Decoration Building, #122 Zhenhua RD., Futian, Shenzhen, China





THIS STYLE ON VM-1030 ONLY



THIS STYLE ON VM-1024 ONLY

PART NO.	DIA. TO BE HELD "D"	"A" REF.	"B" ±.015 (0.38)	"C" ±.010 (0.25)	"E" ±.010 (0.25)	"F" REF.
VM-1002	3/8 (9.5)	.44 (11.2)	.50 (12.7)	.110 (2.8)	SINGLE HOLE IN CENTER	.54 (13.7)
VM-1004	1/2 (12.7)	.52 (13.2)				.75 (19.1)
VM-1007	11/16 (17.5)	.78 (19.8)				.82 (20.8)
VM-1008	3/4 (19.1)	.97 (24.6)				.98 (24.9)
VM-1010	1 (25.4)	1.03 (26.1)	1.12 (28.4)	.150 (3.8)	.750 (19.1)	1.25 (31.8)
VM-1011	1-3/8 (34.9)	1.51 (38.4)	1.16 (29.5)			1.37 (34.8)
VM-1024	1-1/2 (38.1)	1.67 (42.4)	1.70 (43.2)			1.50 (38.1)
VM-1030	2-1/4 (57.2)	2.50 (63.5)	1.52 (38.6)			3.00 (76.2)

NOTES:

1. MATERIAL: NYLON 6/6 UL94 V-2 (RMS-01).
2. COLOR: BLACK.

TITLE: COMPONENT CLIPS, MOLDED			DWG IN IN (MM)		FINAL	
TOLERANCES UNLESS NOTED .XX=±.010 .XXX=±.005 FRAC=±1/64 ANG=±1°		FILE # VM	DWN: P.B.	DT: 08-03-94	PART #	
MAT'L: SEE NOTES		RE: RICHCO, INC.	CHKD:	ENGR:	SEE TABLE	
DESCRIPTION		RICHCO INC. PO BOX 804238, CHICAGO, 60680 (773) 539-4060			PRINT TYPE CA	

C	CORRECTED RMS NUMBER TO RMS-01, CO 200548	DK 06.28.10
B	SEE ECN #499 FOR CHANGES	SM 10.24.02
A	CHANGED FILE NO.	SM 10.17.02
REV	DESCRIPTION	ENGR DATE