



Chipsmall Limited consists of a professional team with an average of over 10 year of expertise in the distribution of electronic components. Based in Hongkong, we have already established firm and mutual-benefit business relationships with customers from,Europe,America and south Asia,supplying obsolete and hard-to-find components to meet their specific needs.

With the principle of “Quality Parts,Customers Priority,Honest Operation,and Considerate Service”,our business mainly focus on the distribution of electronic components. Line cards we deal with include Microchip,ALPS,ROHM,Xilinx,Pulse,ON,Everlight and Freescale. Main products comprise IC,Modules,Potentiometer,IC Socket,Relay,Connector.Our parts cover such applications as commercial,industrial, and automotives areas.

We are looking forward to setting up business relationship with you and hope to provide you with the best service and solution. Let us make a better world for our industry!



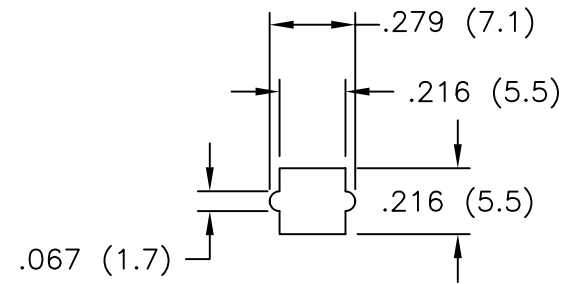
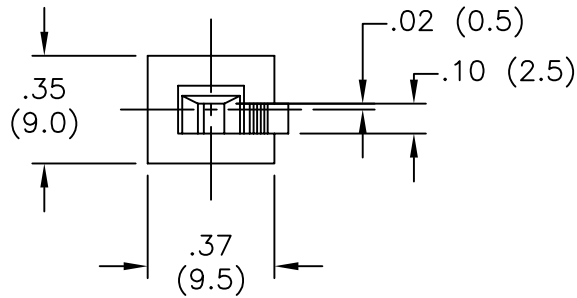
Contact us

Tel: +86-755-8981 8866 Fax: +86-755-8427 6832

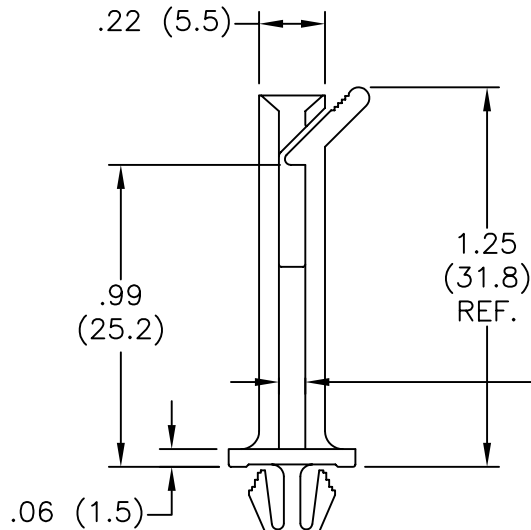
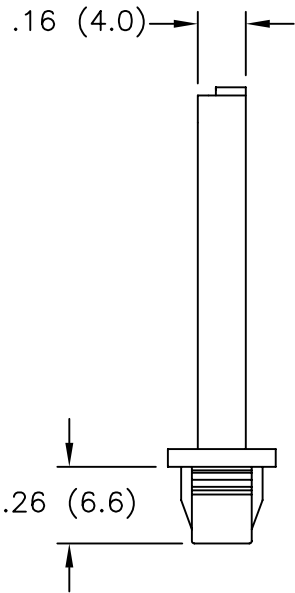
Email & Skype: info@chipsmall.com Web: www.chipsmall.com

Address: A1208, Overseas Decoration Building, #122 Zhenhua RD., Futian, Shenzhen, China



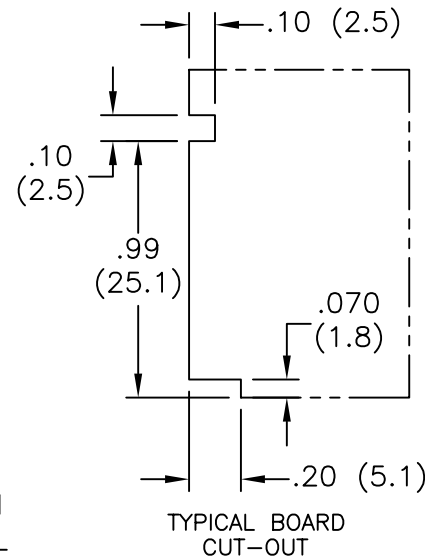


MOUNTING HOLE DIMENSIONS ± 0.003 (± 0.08)

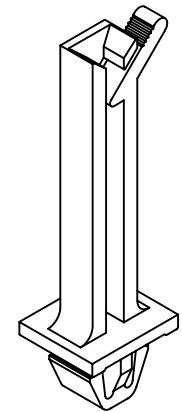


ACCOMODATES
A 1/16 (1.6)
NOMINAL THICK
BOARD

TO FIT IN A .047 TO .071
(1.2 TO 1.8) THICK PANEL



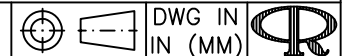
TYPICAL BOARD
CUT-OUT



NOTES:

- MAT'L: NYLON 66 (RMS-01), NAT.
- FLAME RETARDANT NYLON (RMS-19), AVAILABLE BY SPECIAL ORDER

TITLE: VERTICAL MOUNT CARD GUIDE-LATCHED (UK)



TOLERANCES UNLESS NOTED .XX= ± 0.10 .XXX= ± 0.005 FRAC= $\pm 1/64$ ANG= $\pm 1^\circ$		FILE # VMCGLE	DWN: P.B.	APP:	DWG IN IN (MM)	FINAL	PART # VMCGLE-31M-01	PRINT TYPE CA
C	DIM .279 WAS .276, CHANGED FILE NO.	SM 11.29.01	DT: 04-06-94	DT:				
B	TYPICAL BOARD CUT-OUT ADDED	PB 110394	RE: RICHCO, INC.		RICHCO INC. PO BOX 804238, CHICAGO, 60680 (773) 539-4060			
A	P/N VMCGLE-31M-01 WAS VMCGLE	PB 100394						
REV	DESCRIPTION	ENGR DATE						