



Chipsmall Limited consists of a professional team with an average of over 10 year of expertise in the distribution of electronic components. Based in Hongkong, we have already established firm and mutual-benefit business relationships with customers from,Europe,America and south Asia,supplying obsolete and hard-to-find components to meet their specific needs.

With the principle of “Quality Parts,Customers Priority,Honest Operation,and Considerate Service”,our business mainly focus on the distribution of electronic components. Line cards we deal with include Microchip,ALPS,ROHM,Xilinx,Pulse,ON,Everlight and Freescale. Main products comprise IC,Modules,Potentiometer,IC Socket,Relay,Connector.Our parts cover such applications as commercial,industrial, and automotives areas.

We are looking forward to setting up business relationship with you and hope to provide you with the best service and solution. Let us make a better world for our industry!



## Contact us

Tel: +86-755-8981 8866 Fax: +86-755-8427 6832

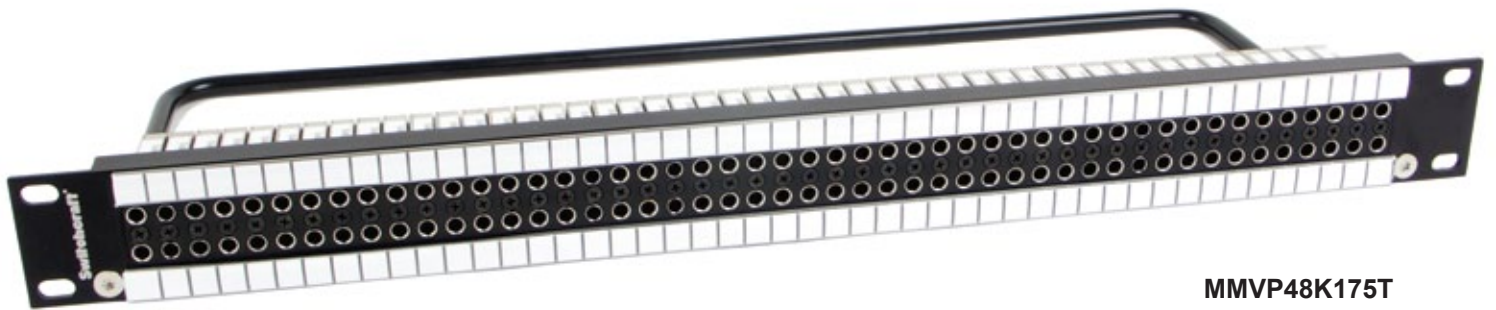
Email & Skype: info@chipsmall.com Web: www.chipsmall.com

Address: A1208, Overseas Decoration Building, #122 Zhenhua RD., Futian, Shenzhen, China



# Switchcraft®

MMVP Micro Video Patchbays



## MMVP48K175T

- 1RU / 96 Patch-points
- Fully Normalled
- 75 Ohm Terminated

## Features

- Based on the proven, reliable, patented technology of our MVJ Series of HD video jacks.
- Screw in, all metal jack design withstands vibration in mobile applications.
- Rated at 3GHz - meets SMPTE 424M specifications for HD patching.

## MMVP Micro Video Patchbays

The MMVP Series provides the highest level of density for SMPTE 424M video and AES/EBU digital audio patching... 48 channels (96 patch-points) in a 1RU 19" rack space.

Based on the patented, proven design of our MVJ MidSize video jack, the all metal, screw-in jack provides complete stability and durability in even the most extreme applications, including mobile production. The MMVP jack is rated at 3GHz and meets SMPTE 424M specifications. Industry standard DIN 1.0 / 2.3 rear termination makes installation easy and eliminates the need for proprietary connectors or special tooling.

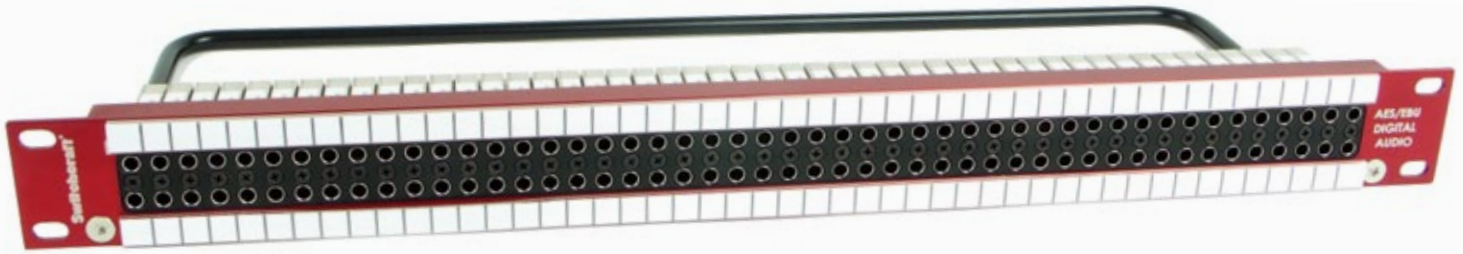
The MMVP Series is available in 1RU, 1.5RU, and 2RU heights for greater flexibility. 1.5RU and 2RU versions are available with two rows of jacks (4x48 density). All versions are available normalled, non-normalled, 75 Ohm terminated or non-terminated.

Made in Chicago, USA 



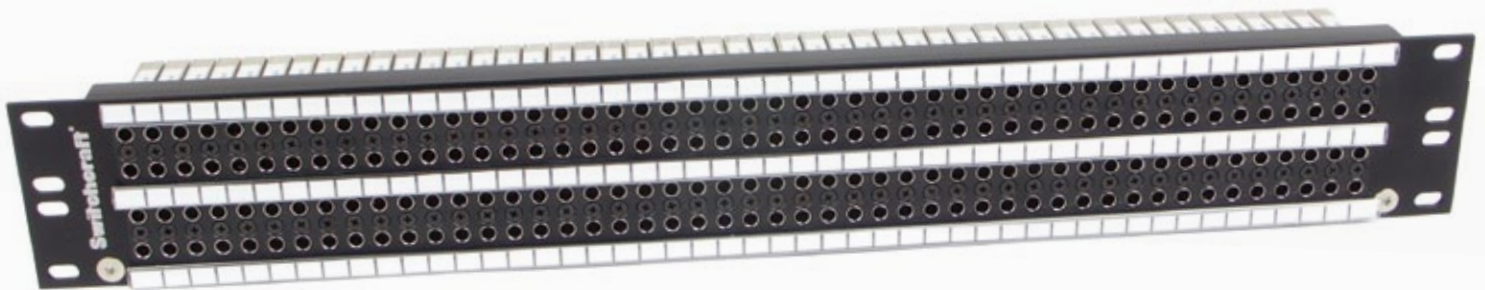
# Switchcraft®

MMVP Micro Video Patchbays



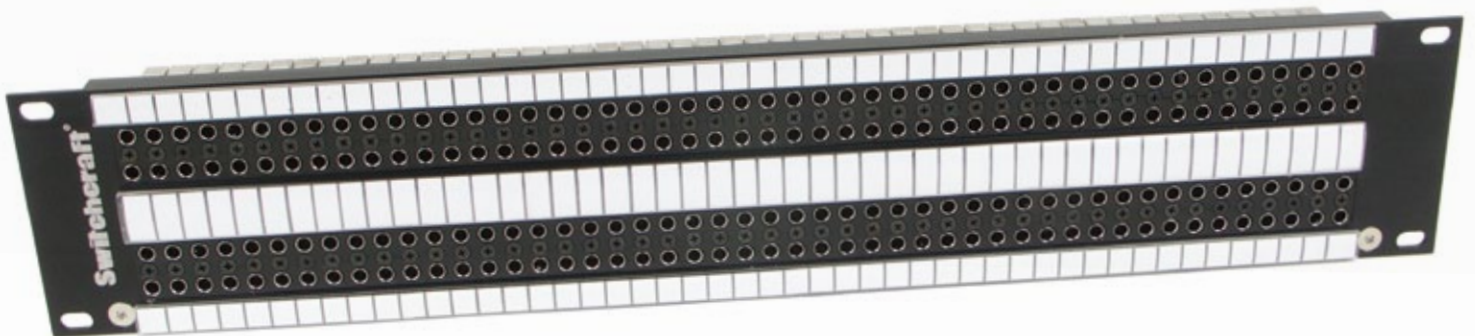
## MMVP48K1NTAES

- 1RU / 96 Patch-points
- Designed for AES/EBU Digital Audio



## MMVP96K275T

- 1.5RU / 192 Patch-points
- Fully Normalled
- 75 Ohm Terminated



## MMVP96K375T

- 2RU / 192 Patch-points
- Fully Normalled
- 75 Ohm Terminated

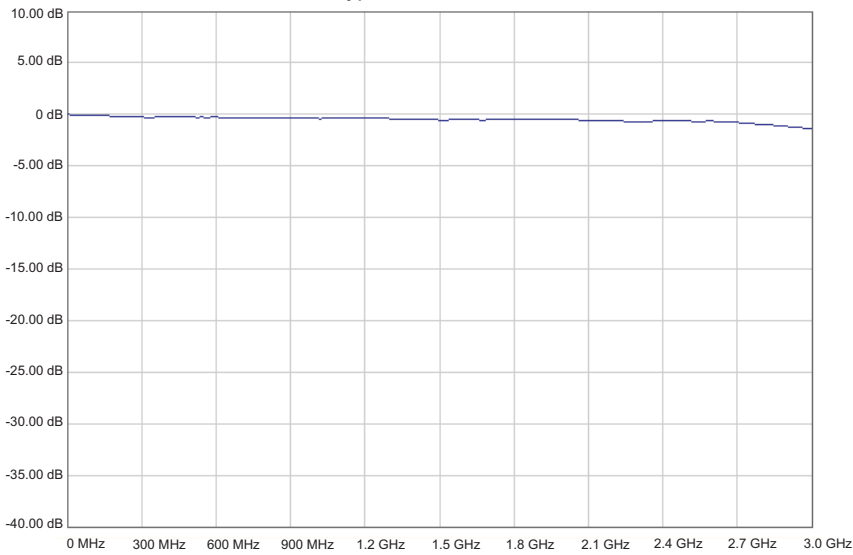


# Switchcraft®

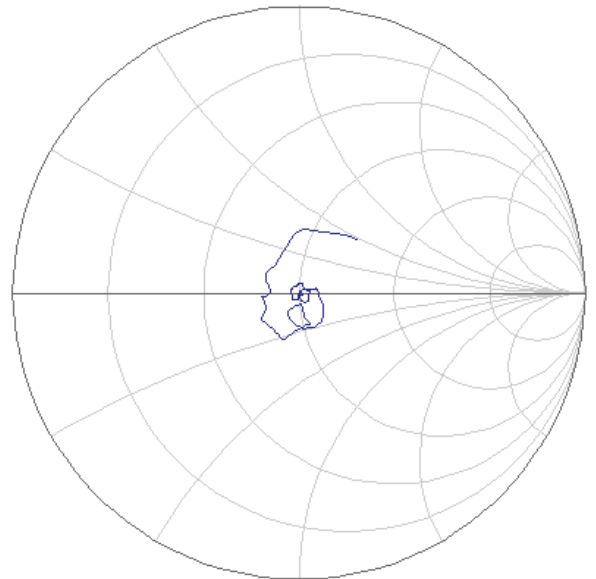
MMVP Micro Video Patchbays

| Patchbay Part Numbers |  | MMVP96K2NT   | 1.5RU, 4x48, Normalled, Non-Terminated     |
|-----------------------|--|--------------|--|
|                       |  | MMVP96K2N75T | 1.5RU, 4x48, Non-Normalled, Terminated     |
| MMVP48K175T           | 1RU, 2x48, Normalled, Terminated           | MMVP96K2NNT  | 1.5RU, 4x48, Non-Normalled, Non-Terminated |
| MMVP48K1NT            | 1RU, 2x48, Normalled, Non-Terminated       | MMVP48K375T  | 2RU, 2x48, Normalled, Terminated           |
| MMVP48K1N75T          | 1RU, 2x48, Non-Normalled, Terminated       | MMVP48K3NT   | 2RU, 2x48, Normalled, Non-Terminated       |
| MMVP48K1NNT           | 1RU, 2x48, Non-Normalled, Non-Terminated   | MMVP48K3N75T | 2RU, 2x48, Non-Normalled, Terminated       |
| MMVP48K275T           | 1.5RU, 2x48, Normalled, Terminated         | MMVP48K3NNT  | 2RU, 2x48, Non-Normalled, Non-Terminated   |
| MMVP48K2NT            | 1.5RU, 2x48, Normalled, Non-Terminated     | MMVP96K375T  | 2RU, 4x48, Normalled, Terminated           |
| MMVP48K2N75T          | 1.5RU, 2x48, Non-Normalled, Terminated     | MMVP96K3NT   | 2RU, 4x48, Normalled, Non-Terminated       |
| MMVP48K2NNT           | 1.5RU, 2x48, Non-Normalled, Non-Terminated | MMVP96K3N75T | 2RU, 4x48, Non-Normalled, Terminated       |
| MMVP96K275T           | 1.5RU, 4x48, Normalled, Terminated         | MMVP96K3NNT  | 2RU, 4x48, Non-Normalled, Non-Terminated   |

Typical Insertion Loss

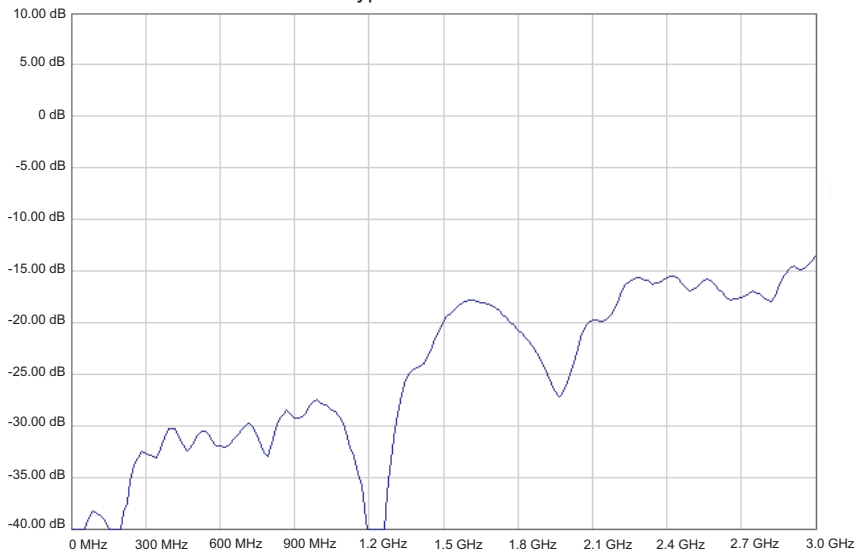


Smith Chart



Start: 30KHz / Stop: 3.0 GHz

Typical Return Loss



# Switchcraft®

MMVP Micro Video Patchbays

## MMVP Series Patchcords

MMVP Series patchcords are perfect for the most critical HD video and AES/EBU digital audio patching applications. They are available in a wide variety of lengths and colors. Each patchcord is assembled using premium, low loss cabling and a rugged overmolded strain relief for long lasting dependability.

## Part Number Configurator

Plug Type      1-10 Ft.      Color Code  
**VMMP** +  +

Color: BK = Black   GN = Green   Y = Yellow  
         R = Red        BL = Blue  
         O = Orange   GY = Gray



VMMP2BK

## DIN 1.0/2.3 Connectors

Our DIN 1.0/2.3 connectors utilize a unique push/pull lock and release feature, simplifying installation and modification. They are 75 Ohm rated, compatible with the most widely used cable sizes, and can be terminated using a standard BNC crimp tool.



DIN1855A

## Part Numbers

|          |                              |
|----------|------------------------------|
| DIN1855A | Compatible with Belden 1855A |
| DIN179DT | Compatible with Belden 179DT |
| DIN1505A | Compatible with Belden 1505A |
| DIN1694A | Compatible with Belden 1694A |

## DIN 1.0/2.3 Insertion / Withdrawal Tool

The MMVPTL insertion / withdrawal tool is 16" long and allows easy access to the DIN 1.0/2.3 connectors on the back of the patchbay, making setup and modification fast and easy.



MMVPTL

