



Chipsmall Limited consists of a professional team with an average of over 10 year of expertise in the distribution of electronic components. Based in Hongkong, we have already established firm and mutual-benefit business relationships with customers from,Europe,America and south Asia,supplying obsolete and hard-to-find components to meet their specific needs.

With the principle of "Quality Parts,Customers Priority,Honest Operation,and Considerate Service",our business mainly focus on the distribution of electronic components. Line cards we deal with include Microchip,ALPS,ROHM,Xilinx,Pulse,ON,Everlight and Freescale. Main products comprise IC,Modules,Potentiometer,IC Socket,Relay,Connector.Our parts cover such applications as commercial,industrial, and automotives areas.

We are looking forward to setting up business relationship with you and hope to provide you with the best service and solution. Let us make a better world for our industry!



Contact us

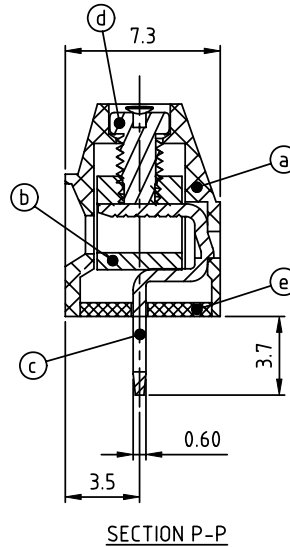
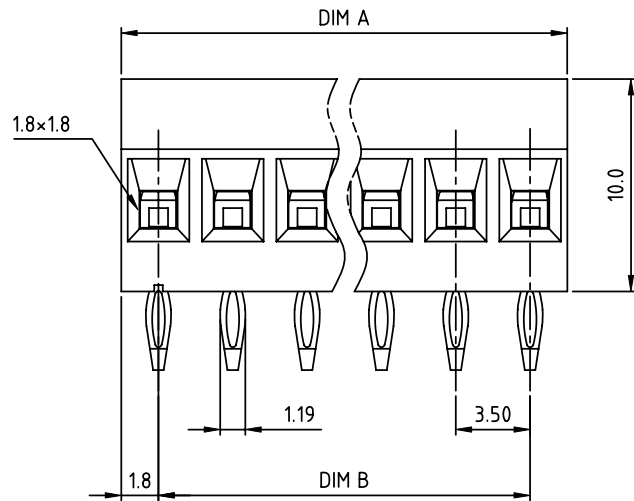
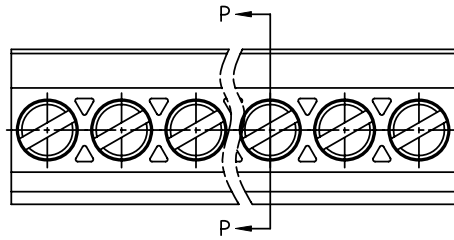
Tel: +86-755-8981 8866 Fax: +86-755-8427 6832

Email & Skype: info@chipsmall.com Web: www.chipsmall.com

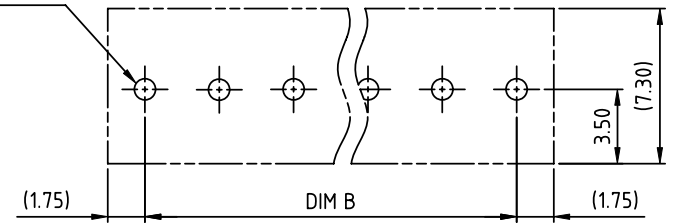
Address: A1208, Overseas Decoration Building, #122 Zhenhua RD., Futian, Shenzhen, China



PRODUCT NUMBER	PITCH
VQxx11x100J0G	3.50 mm



Diameter of metal-plated hole: $\phi 1.0 \pm 0.05$



RECOMMENDED P.C.B LAYOUT
TOP VIEW

Material:

- Item① Terminal housing :Thermoplastic (UL 94V-0)
- Item② Clamp : Brass, Ni plated
- Item③ solder pin : Brass, Tin plated
- Item④ Terminal screw: Steel Zinc plating"-slot type
- Item⑤ Terminal cover:Thermoplastic (UL 94V-0)

Electrical: cULus

- Voltage rating: 300V
- Current rating: 10A
- Wire range:
- Solid wire(AWG): 16-30
- Stranded wire(AWG): 16-30
- Torque: 1.7 Lb-In
- Diameter of metal - plated hole : $\phi 1.0$
- Screw: M2
- Wire strip length: 5-6mm
- Withstanding Voltage: 1.6 KV
- Operating temperature: -40°C to +115°C
- Soldering temperature: 260°C \pm 5°C/5 Sec
- Safety Approval:

N= Number of poles

DIM A	N \times 3.5
DIM B	(N-1) \times 3.5

Poles	Tolerance
2p-6p	± 0.15
7p-12p	± 0.25
13p-19p	± 0.35
20p-24p	± 0.40

PART NO.: VQ xx 1 1 x 1 00J0 G

- | | | | |
|--------------|---|-------------------|-----------------|
| Solid Block | 0 | Black (RAL9005) | RoHS compliant |
| No. of poles | 2 | Red (RAL3001/D) | (lead<4%) |
| 02 2 poles | 3 | Orange(RAL2011/P) | In copper Alloy |
| 03 3 poles | 4 | Yellow(RAL1018/A) | |
| ... | 5 | Green(RAL6018/T) | |
| 24 24 poles | 6 | Blue (RAL5015/A) | |
| | 8 | Grey(RAL7035/D) | |
| | 9 | White(RAL1102) | |
| | C | Green(RAL6018/U) | |

mat'l. code		surface ASME Y14.5	tolerance ASME Y14.5	projection 	product family TERMINAL BLOCK
ltr	ecn no	dr	date	tolerances unless otherwise specified	title
				angles ϕ \pm	TERMINAL BLOCK
				X \pm 0.5	RISING CLAMP,180D WIRE INLET,PRESS FIT
				X.X \pm 0.3	scale
				X.XX \pm 0.1	MM
dr	EVIN ZHONG	040714			FCI
enr	EVIN ZHONG	040714			dwg no
chr	HANKE FENG	040714			VQxx11x100J0G
appd	SHI JUN	040714			sheet 1 of 1
					size
					A4
sheet index	revision	A			type
	sheet	1			CUSTOMER Drawing