



Chipsmall Limited consists of a professional team with an average of over 10 year of expertise in the distribution of electronic components. Based in Hongkong, we have already established firm and mutual-benefit business relationships with customers from,Europe,America and south Asia,supplying obsolete and hard-to-find components to meet their specific needs.

With the principle of “Quality Parts,Customers Priority,Honest Operation,and Considerate Service”,our business mainly focus on the distribution of electronic components. Line cards we deal with include Microchip,ALPS,ROHM,Xilinx,Pulse,ON,Everlight and Freescale. Main products comprise IC,Modules,Potentiometer,IC Socket,Relay,Connector.Our parts cover such applications as commercial,industrial, and automotives areas.

We are looking forward to setting up business relationship with you and hope to provide you with the best service and solution. Let us make a better world for our industry!



Contact us

Tel: +86-755-8981 8866 Fax: +86-755-8427 6832

Email & Skype: info@chipsmall.com Web: www.chipsmall.com

Address: A1208, Overseas Decoration Building, #122 Zhenhua RD., Futian, Shenzhen, China



World Standard Analog Equipment

5 Watt VR-LB Series



Ultra Low Noise 3mVpp, Isolated Type DC-DC Converter

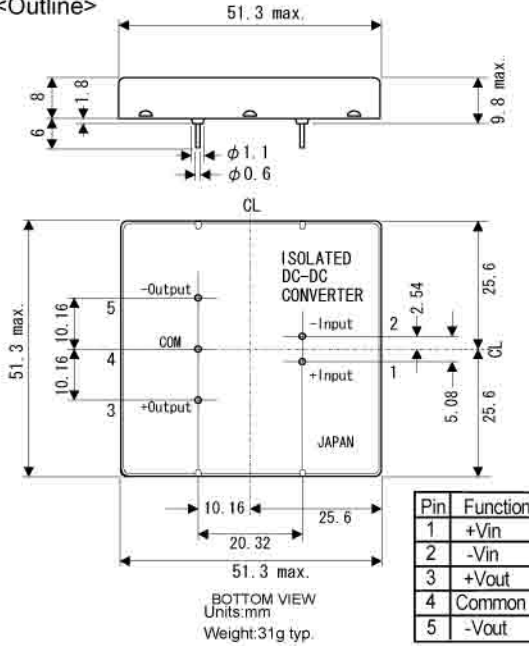
Input: 5V Output: ±12V, ±15V

- Ultra Low Noise 3mVp-p
- Analog, Digital Optimum
- Short Circuit, Over-Current Protection
- No Electrolytic Capacitor, No Tantalum Capacitor
- 5-Side Metallic shield structure
- EMI Line Filter
- Over-Heat Protection
- Long-Life with TCT Patent Circuit
- Isolation Voltage DC500V
- Low Drift 50mV/8H
- Temp Coefficient ±0.02%/°C
- Operating Temp Range -20°C to +70°C (Temp Derating Required)
- RoHS Compliance

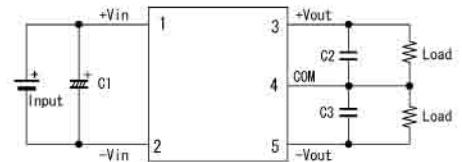
Models Series	Input V Vdc	Output +V/I, -V/I +Vdc/mA, -Vdc/mA	Line Reg % (typ.)	Load Reg % (typ.)	Ripple/ Noise mVpp(max.)	Efficiency % (typ.)
VR05-1220LB	4.75-6	+12/208, -12/-208	0.03	0.18	3	64
VR05-1225LB		+12/250, -12/-125				
VR05-1516LB		+15/167, -15/-167				
VR05-1520LB		+15/200, -15/-100				

Note 1: Derating required for input voltages 5.25V or greater.

<Outline>



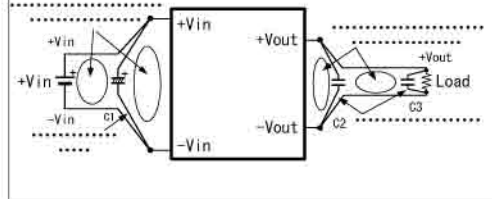
<Standard Connection Diagram>



- Recommended Capacitor

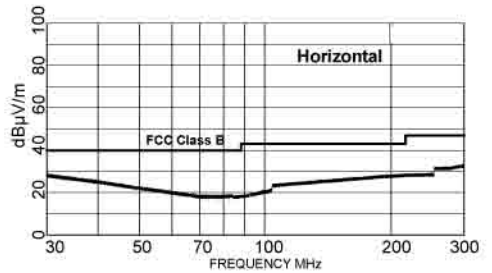
C1=100µF
C2,C3=1µF

External capacitors are not required, but noise can be lowered by reducing power line impedance, and load line impedance.

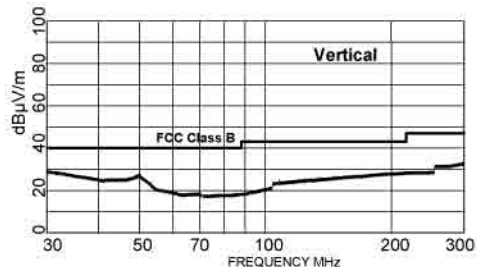
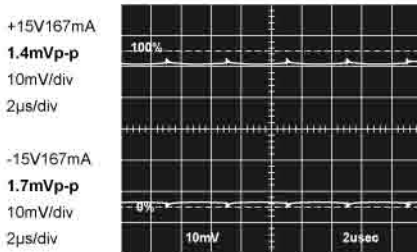


RADIATED EMISSION FCC Class B <3m>

Model Name VR05-1516LB
Serial No. ES1
Input +5V
Load ±15V 167mA
DET.Mode Peak
Limits 30MHz - 1000MHz
Band Number 3 Meas Mode : D
Antenna Mode Horizontal, Vertical
Test Equip. TR4172,TR14307



<VR05-1516LB> Output Noise



- Note!
This catalogue is an outline of the products. When designing, be sure to refer to the data sheets.