



Chipsmall Limited consists of a professional team with an average of over 10 year of expertise in the distribution of electronic components. Based in Hongkong, we have already established firm and mutual-benefit business relationships with customers from,Europe,America and south Asia,supplying obsolete and hard-to-find components to meet their specific needs.

With the principle of “Quality Parts,Customers Priority,Honest Operation,and Considerate Service”,our business mainly focus on the distribution of electronic components. Line cards we deal with include Microchip,ALPS,ROHM,Xilinx,Pulse,ON,Everlight and Freescale. Main products comprise IC,Modules,Potentiometer,IC Socket,Relay,Connector.Our parts cover such applications as commercial,industrial, and automotives areas.

We are looking forward to setting up business relationship with you and hope to provide you with the best service and solution. Let us make a better world for our industry!



## Contact us

Tel: +86-755-8981 8866 Fax: +86-755-8427 6832

Email & Skype: info@chipsmall.com Web: www.chipsmall.com

Address: A1208, Overseas Decoration Building, #122 Zhenhua RD., Futian, Shenzhen, China



**MODULE CONFIGURATIONS**

Viking Part Number	Capacity	Module Configuration	Device Configuration	Device Package	Module Ranks	Performance	CAS Latency
VR7PU286498FBZ	1GB	128MX64	128Mx8	FBGA	1	PC3-6400	CL6 (6-6-6)
VR7PU286498FBA	1GB	128MX64	128Mx8	FBGA	1	PC3-8500	CL7 (7-7-7)
VR7PU286498FBD	1GB	128MX64	128Mx8	FBGA	1	PC3-10600	CL9 (9-9-9)
VR7PU286498FBF	1GB	128MX64	128Mx8	FBGA	1	PC3-12800	CL11 (11-11-11)
VR7PU286498FBG	1GB	128MX64	128Mx8	FBGA	1	PC3-14900	CL13 (13-13-13)
VR7PU566498FBZ	2GB	256MX64	128Mx8	FBGA	2	PC3-6400	CL6 (6-6-6)
VR7PU566498FBA	2GB	256MX64	128Mx8	FBGA	2	PC3-8500	CL7 (7-7-7)
VR7PU566498FBD	2GB	256MX64	128Mx8	FBGA	2	PC3-10600	CL9 (9-9-9)
VR7PU566498FBF	2GB	256MX64	128Mx8	FBGA	2	PC3-12800	CL11 (11-11-11)
VR7PU566498FBG	2GB	256MX64	128Mx8	FBGA	2	PC3-14900	CL13 (13-13-13)
VR7PU566498GBZ	2GB	256MX64	256Mx8	FBGA	1	PC3-6400	CL6 (6-6-6)
VR7PU566498GBA	2GB	256MX64	256Mx8	FBGA	1	PC3-8500	CL7 (7-7-7)
VR7PU566498GBD	2GB	256MX64	256Mx8	FBGA	1	PC3-10600	CL9 (9-9-9)
VR7PU566498GBF	2GB	256MX64	256Mx8	FBGA	1	PC3-12800	CL11 (11-11-11)
VR7PU566498GBG	2GB	256MX64	256Mx8	FBGA	1	PC3-14900	CL13 (13-13-13)
VR7PU126498GBZ	4GB	512MX64	256Mx8	FBGA	2	PC3-6400	CL6 (6-6-6)
VR7PU126498GBA	4GB	512MX64	256Mx8	FBGA	2	PC3-8500	CL7 (7-7-7)
VR7PU126498GBD	4GB	512MX64	256Mx8	FBGA	2	PC3-10600	CL9 (9-9-9)
VR7PU126498GBF	4GB	512MX64	256Mx8	FBGA	2	PC3-12800	CL11 (11-11-11)
VR7PU126498GBG	4GB	512MX64	256Mx8	FBGA	2	PC3-14900	CL13 (13-13-13)
VR7PU126498HBZ	4GB	512MX64	512Mx8	FBGA	1	PC3-6400	CL6 (6-6-6)
VR7PU126498HBA	4GB	512MX64	512Mx8	FBGA	1	PC3-8500	CL7 (7-7-7)
VR7PU126498HBD	4GB	512MX64	512Mx8	FBGA	1	PC3-10600	CL9 (9-9-9)
VR7PU126498HBF	4GB	512MX64	512Mx8	FBGA	1	PC3-12800	CL11 (11-11-11)
VR7PU126498HBG	4GB	512MX64	512Mx8	FBGA	1	PC3-14900	CL13 (13-13-13)
VR7PU1G6498HBZ	8GB	1GX64	512Mx8	FBGA	2	PC3-6400	CL6 (6-6-6)
VR7PU1G6498HBA	8GB	1GX64	512Mx8	FBGA	2	PC3-8500	CL7 (7-7-7)
VR7PU1G6498HBD	8GB	1GX64	512Mx8	FBGA	2	PC3-10600	CL9 (9-9-9)
VR7PU1G6498HBF	8GB	1GX64	512Mx8	FBGA	2	PC3-12800	CL11 (11-11-11)
VR7PU1G6498HBG	8GB	1GX64	512Mx8	FBGA	2	PC3-14900	CL13 (13-13-13)
VR7PU1G6498JBZ	8GB	1GX64	1024Mx8	FBGA	1	PC3-6400	CL6 (6-6-6)
VR7PU1G6498JBA	8GB	1GX64	1024Mx8	FBGA	1	PC3-8500	CL7 (7-7-7)
VR7PU1G6498JBD	8GB	1GX64	1024Mx8	FBGA	1	PC3-10600	CL9 (9-9-9)
VR7PU1G6498JBF	8GB	1GX64	1024Mx8	FBGA	1	PC3-12800	CL11 (11-11-11)
VR7PU1G6498JBG	8GB	1GX64	1024Mx8	FBGA	1	PC3-14900	CL13 (13-13-13)
VR7PU2G6498JBZ	16GB	2GX64	1024Mx8	FBGA	2	PC3-6400	CL6 (6-6-6)
VR7PU2G6498JBA	16GB	2GX64	1024Mx8	FBGA	2	PC3-8500	CL7 (7-7-7)
VR7PU2G6498JBD	16GB	2GX64	1024Mx8	FBGA	2	PC3-10600	CL9 (9-9-9)
VR7PU2G6498JBF	16GB	2GX64	1024Mx8	FBGA	2	PC3-12800	CL11 (11-11-11)
VR7PU2G6498JBG	16GB	2GX64	1024Mx8	FBGA	2	PC3-14900	CL13 (13-13-13)

**Note:** For part numbers containing an x, contact Viking for the complete PN

**Features**

- JEDEC standard Power Supply
  - VDD = 1.35V (1.283V to 1.45V)
  - VDDSPD = +3.0V to +3.6V
  - Backward Compatible with 1.5V DDR3 DIMMs
    - VDD = 1.5V (1.425V to 1.575V)
- 204pin Small Outline Dual-In-Line Memory Module.

**Viking Technology ♦ 2950 Red Hill Ave ♦ Costa Mesa, CA 92626**  
**Tel (800) 338-2361 Fax (949) 666-8159 ♦ Website: <http://www.Vikingtechnology.com>**

This Data Sheet is subject to change without notice.  
 Doc. # PS7PUxx6498xxx-LF ■ Revision E ■



- 8 Internal Banks.
- Programmable CAS Latency: 6, 7, 9, 11, 13
- Programmable CAS Write Latency (CWL).
- Programmable Additive Latency (Posted CAS).
- Fixed burst chop (BC) of 4 and burst length (BL) of 8 via the mode register set (MRS)
- Selectable BC4 or BL8 on-the-fly (OTF)
- On-Die-Termination (ODT) and Dynamic ODT for improved signal integrity.
- Refresh. Self Refresh and Power Down Modes.
- Serial Presence Detect with EEPROM.
- On-DIMM Thermal Sensor.
- RoHS Compliant\* (see last page)

### Nomenclature

Module Standard	SDRAM Standard	Clock
PC3-6400	DDR3-800	400MHz
PC3 -8500	DDR3-1066	533MHz
PC3-10600	DDR3-1333	667MHz
PC3-12800	DDR3-1600	800MHz
PC3-14920	DDR3-1866	933MHz

**Viking Technology ♦ 2950 Red Hill Ave ♦ Costa Mesa, CA 92626**  
**Tel (800) 338-2361 Fax (949) 666-8159 ♦ Website: <http://www.Vikingtechnology.com>**

This Data Sheet is subject to change without notice.  
 Doc. # PS7PUxx6498xxx-LF ■ Revision E ■



**PIN CONFIGURATIONS**

Pin	Front Side	Pin	Back Side	Pin	Front Side	Pin	Back Side	Pin	Front Side	Pin	Back Side	Pin	Front Side	Pin	Back Side
1	VREFDQ	2	Vss	53	DQ19	54	Vss	105	VDD	106	VDD	157	DQ42	158	DQ46
3	Vss	4	DQ4	55	Vss	56	DQ28	107	A10/AP	108	BA1	159	DQ43	160	DQ47
5	DQ0	6	DQ5	57	DQ24	58	DQ29	109	BA0	110	RAS#	161	Vss	162	Vss
7	DQ1	8	Vss	59	DQ25	60	Vss	111	VDD	112	VDD	163	DQ48	164	DQ52
9	Vss	10	DQS0#	61	Vss	62	DQS3#	113	WE#	114	S0#	165	DQ49	166	DQ53
11	DM0	12	DQS0	63	DM3	64	DQS3	115	CAS#	116	ODT0	167	Vss	168	Vss
13	Vss	14	Vss	65	Vss	66	Vss	117	VDD	118	VDD	169	DQS6#	170	DM6
15	DQ2	16	DQ6	67	DQ26	68	DQ30	119	A13	120	ODT1	171	DQS6	172	Vss
17	DQ3	18	DQ7	69	DQ27	70	DQ31	121	S1#	122	NC	173	Vss	174	DQ54
19	Vss	20	Vss	71	Vss	72	Vss	123	VDD	124	VDD	175	DQ50	176	DQ55
21	DQ8	22	DQ12	73	CKE0	74	CKE1	125	TEST	126	VREFCA	177	DQ51	178	Vss
23	DQ9	24	DQ13	75	VDD	76	VDD	127	Vss	128	Vss	179	Vss	180	DQ60
25	Vss	26	Vss	77	NC	78	A15	129	DQ32	130	DQ36	181	DQ56	182	DQ61
27	DQS1#	28	DM1	79	BA2	80	A14	131	DQ33	132	DQ37	183	DQ57	184	Vss
29	DQS1	30	RESET#	81	VDD	82	VDD	133	Vss	134	Vss	185	Vss	186	DQS7#
31	Vss	32	Vss	83	A12/BC#	84	A11	135	DQS4#	136	DM4	187	DM7	188	DQS7
33	DQ10	34	DQ14	85	A9	86	A7	137	DQS4	138	Vss	189	Vss	190	Vss
35	DQ11	36	DQ15	87	VDD	88	VDD	139	Vss	140	DQ38	191	DQ58	192	DQ62
37	Vss	38	Vss	89	A8	90	A6	141	DQ34	142	DQ39	193	DQ59	194	DQ63
39	DQ16	40	DQ20	91	A5	92	A4	143	DQ35	144	Vss	195	Vss	196	Vss
41	DQ17	42	DQ21	93	VDD	94	VDD	145	Vss	146	DQ44	197	SA0	198	EVENT#
43	Vss	44	Vss	95	A3	96	A2	147	DQ40	148	DQ45	199	VDDSPD	200	SDA
45	DQS2#	46	DM2	97	A1	98	A0	149	DQ41	150	Vss	201	SA1	202	SCL
47	DQS2	48	Vss	99	VDD	100	VDD	151	Vss	152	DQS5#	203	Vtt	204	Vtt
49	Vss	50	DQ22	101	CK0	102	CK1	153	DM5	154	DQS5				
51	DQ18	52	DQ23	103	CK0#	104	CK1#	155	Vss	156	Vss				

**Viking Technology ♦ 2950 Red Hill Ave ♦ Costa Mesa, CA 92626**  
**Tel (800) 338-2361 Fax (949) 666-8159 ♦ Website: <http://www.Vikingtechnology.com>**

This Data Sheet is subject to change without notice.  
 Doc. # PS7PUxx6498xxx-LF ■ Revision E ■



**PIN FUNCTION DESCRIPTION**

SYMBOL	TYPE	POLARITY	DESCRIPTION
CK0, CK1	IN	Positive Edge	Positive lines of the differential pairs of system clock inputs. All control, command, and address input signals are sampled on the crossing of the positive edge of CK and the negative edge of CK#.
CK0#, CK1#	IN	Negative Edge	Negative lines of the differential pairs of system clock inputs. All control, command, and address input signals are sampled on the crossing of the positive edge of CK and the negative edge of CK#.
CKE[1:0]	IN	Active High	CKE HIGH activates, and CKE LOW deactivates internal clock signals, and device input buffers and output drivers of the SDRAMs. Taking CKE LOW provides PRECHARGE POWER-DOWN and SELF REFRESH operation (all banks idle), or ACTIVE POWER DOWN (row ACTIVE in any bank)
S[1:0]#	IN	Active Low	Enables the associated SDRAM command decoder when low and disables decoder when high. When decoder is disabled, new commands are ignored and previous operations continue
ODT[1:0]	IN	Active High	On-Die Termination control signals
RAS#, CAS#, WE#	IN	Active Low	When sampled at the positive rising edge of the clock, CAS#, RAS#, and WE# define the operation to be executed by the SDRAM.
VREFDQ	Supply		Reference voltage for DQ0-DQ63.
VREFCA	Supply		Reference voltage for A0-A15, BA0-BA2, RAS#, CAS#, WE#, S0#, S1#, CKE0, CKE1, Par_In, ODT0 and ODT1.
BA[2:0]	IN	-	Selects which SDRAM bank of eight is activated. BA0 - BA2 define to which bank an Active, Read, Write or Precharge command is being applied. Bank address also determines mode register is to be accessed during an MRS cycle.
A[15:13, 12/BC, 11, 10/AP, 9:0]	IN	-	Provided the row address for Active commands and the column address and Auto Precharge bit for Read/Write commands to select one location out of the memory array in the respective bank. A10 is sampled during a Precharge command to determine whether the Precharge applies to one bank (A10 LOW) or all banks (A10 HIGH). If only one bank is to be precharged, the bank is selected by BA. A12 is also utilized for BL 4/8 identification for "BL on the fly" during CAS# command. The address inputs also provide the op-code during Mode Register Set commands.
DQ [63:0],	I/O	-	Data Input/Output pins
VDD, VSS	Supply	-	Power and ground for the DDR SDRAM input buffers and core logic.
DM [7:0]	IN	Active High	Masks write data when high, issued concurrently with input data.
VDD, VSS	Supply		Power and ground for the DDR SDRAM input buffers and core logic.
VTT	Supply		Termination Voltage for Address/Command/Control/Clock nets.
DQS[7:0]	I/O	Positive Edge	Positive line of the differential data strobe for input and output data.
DQS [7:0]#	I/O	Negative Edge	Negative line of the differential data strobe for input and output data.
SA [1:0]	IN	-	These signals are tied at the system planar to either VSS or VDDSPD to configure the serial SPD EEPROM address range.
SDA	I/O	-	This bidirectional pin is used to transfer data into or out of the SPD EEPROM. A resistor must be connected from the SDA bus line to VDDSPD on the system planar to act as a pullup.
SCL	IN	-	This signal is used to clock data into and out of the SPD EEPROM. A resistor may be connected from the SCL bus time to VDDSPD on the system planar to act as a pullup.
EVENT#	OUT (open drain)	Active Low	This signal indicates that a thermal event has been detected in the thermal sensing device. The system should guarantee the electrical level requirement is met for the EVENT pin on TS/SPD part.
VDDSPD	Supply	-	Serial EEPROM positive power supply wired to a separate power pin at the connector which supports from 3.0 Volt to 3.6 Volt (nominal 3.3V) operation.
RESET#	IN		This signal resets the DDR3 SDRAM.

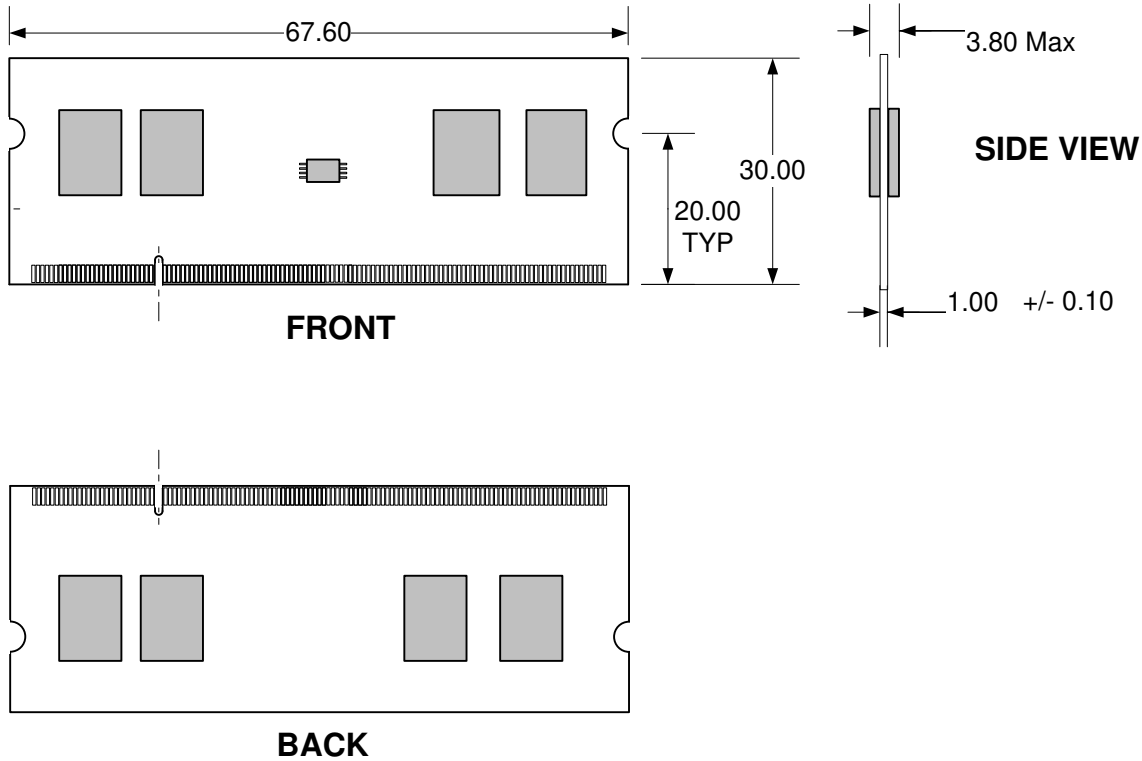
**Viking Technology ♦ 2950 Red Hill Ave ♦ Costa Mesa, CA 92626**  
**Tel (800) 338-2361 Fax (949) 666-8159 ♦ Website: <http://www.Vikingtechnology.com>**

This Data Sheet is subject to change without notice.  
 Doc. # PS7PUxx6498xxx-LF ■ Revision E ■



**MECHANICAL OUTLINE SINGLE RANK**

Dimensions are in mm. Tolerance is +/- 0.127, unless otherwise stated.



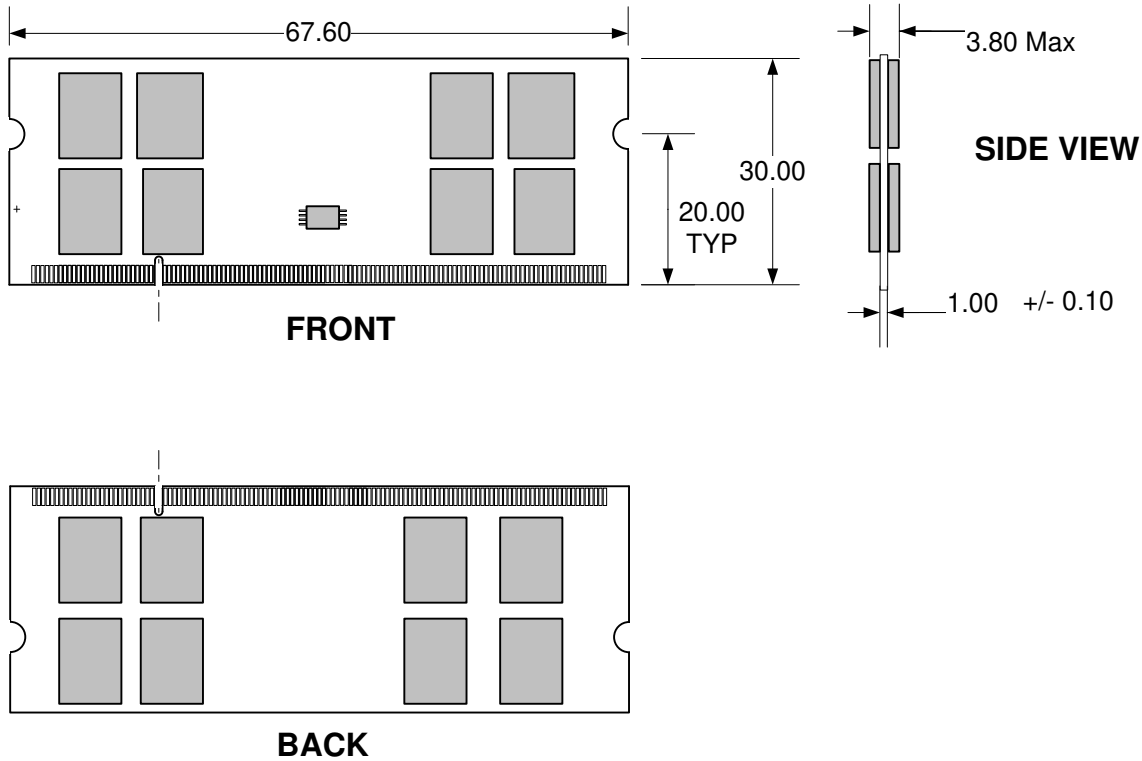
Viking Technology ♦ 2950 Red Hill Ave ♦ Costa Mesa, CA 92626  
Tel (800) 338-2361 Fax (949) 666-8159 ♦ Website: <http://www.Vikingtechnology.com>

This Data Sheet is subject to change without notice.  
Doc. # PS7PUxx6498xxx-LF ■ Revision E ■



**MECHANICAL OUTLINE DUAL RANK**

Dimensions are in mm. Tolerance is +/- 0.127, unless otherwise stated.

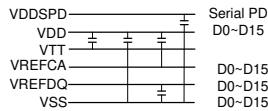
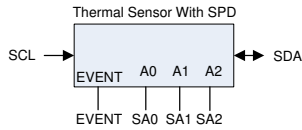
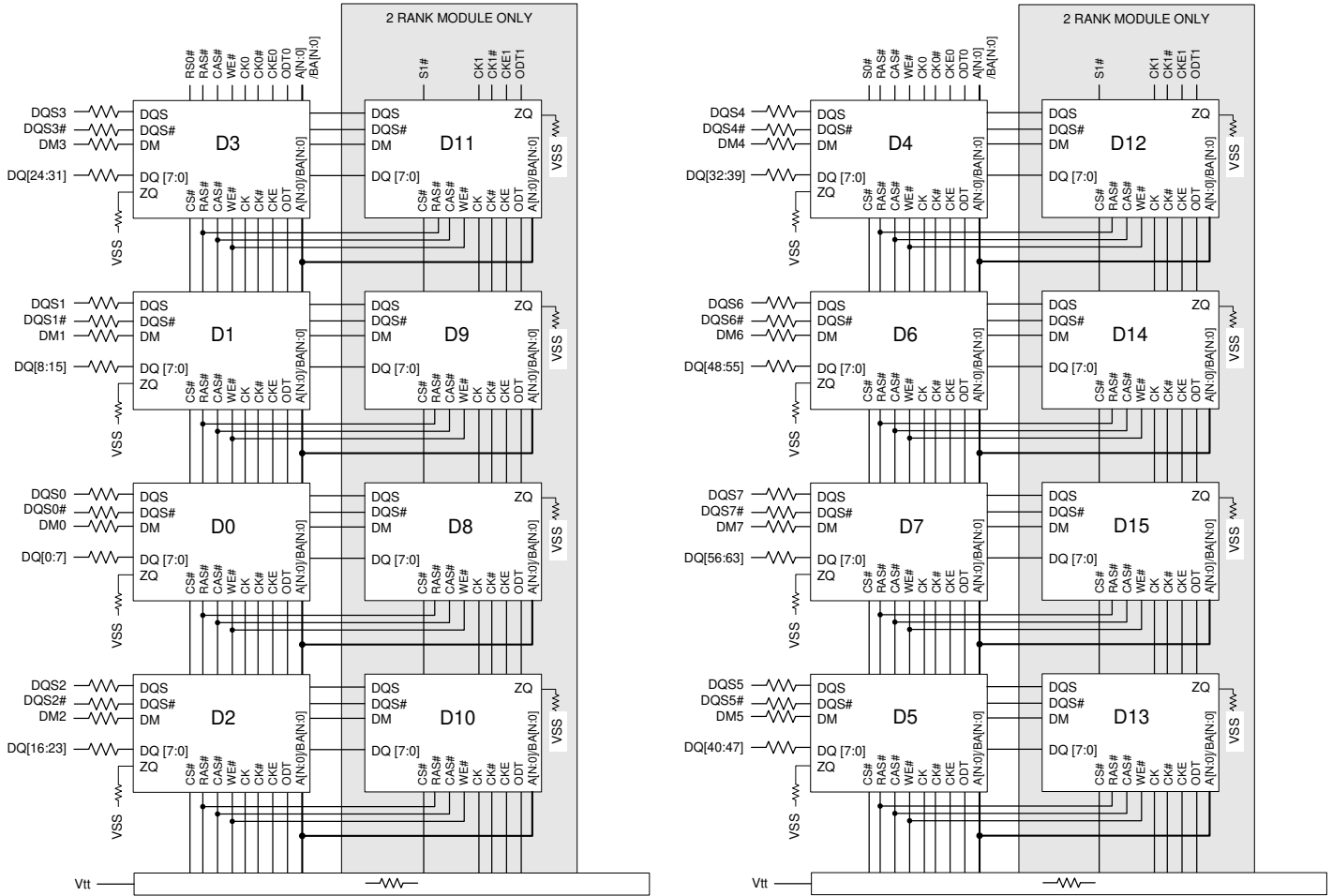


**Viking Technology ♦ 2950 Red Hill Ave ♦ Costa Mesa, CA 92626**  
**Tel (800) 338-2361 Fax (949) 666-8159 ♦ Website: <http://www.Vikingtechnology.com>**

This Data Sheet is subject to change without notice.  
 Doc. # PS7PUxx6498xxx-LF ■ Revision E ■



**FUNCTIONAL BLOCK DIAGRAM**



Notes:  
The resistor values may vary depending on systems application

**Viking Technology ♦ 2950 Red Hill Ave ♦ Costa Mesa, CA 92626  
Tel (800) 338-2361 Fax (949) 666-8159 ♦ Website: <http://www.Vikingtechnology.com>**

This Data Sheet is subject to change without notice.  
Doc. # PS7PUxx6498xxx-LF ■ Revision E ■





## ABSOLUTE MAXIMUM RATINGS

Parameter	Symbol	Value	Unit
Voltage on any pin relative to GND	Vin, Vout	-0.4 ~ 1.975	V
Voltage on VDD supply relative to GND	VDD	-0.4 ~ 1.975	V
Voltage on VDDQ supply relative to GND	VDDQ	-0.4 ~ 1.975	V
Storage temperature	TSTG	-55 ~ +100	°C

**Note:** Permanent device damage may occur if 'ABSOLUTE MAXIMUM RATINGS' are exceeded. Functional operation should be restricted to recommended operating condition. Exposure to higher than recommended voltage for extended periods of time could affect device reliability.

## DC OPERATING CONDITIONS AND CHARACTERISTICS (SSTL\_1.35)

Recommended operating conditions (Voltages referenced to GND, Tcase = 0 to 85°C)

Parameter	Symbol	Min.	Max.	Unit	Notes
Case Temperature	Tcase	0	95	°C	5
Supply voltage (1.35V)	VDD	1.283	1.45	V	1, 2
Supply voltage (1.5V)	VDD	1.425	1.575	V	1, 2
Supply voltage for DQ, DQS (1.35V)	VDDQ	1.283	1.45	V	1, 2
Supply voltage for DQ, DQS (1.5V)	VDDQ	1.425	1.575	V	1, 2
Reference Voltage for DQ, DM inputs	VREFDQ(DC)	0.49 x VDD	0.51 x VDD	V	3, 4
Reference Voltage for ADD, CMD inputs	VREFCA(DC)	0.49 x VDD	0.51 x VDD	V	3, 4
Terminal Voltage	VTT	0.49 x VDD	0.51 x VDD	V	3, 4
EEPROM Supply Voltage	VDDSPD	3.0	3.6	V	
Input high voltage	VIH(AC)	160	-	mV	
	VIH(DC)	90	VDD		
Input low voltage	VIL(AC)	-	0.160	V	
	VIL(DC)	VSS	0.90		
Input leakage current	Single Rank	IIL	-16	16	μA
	Dual Rank		-32		
Output leakage current	Single Rank	IOL	-40	40	μA
	Dual Rank		-80		

### Notes:

- VDDQ tracks with VDD. AC parameters are measured with VDD and VDDQ tied together
- Under all conditions VDDQ must be less than or equal to VDD.
- The ac peak noise on VREF may not allow VREF to deviate from VREF.DC by more than ±1% VDD (for reference: approx. ± 15 mV).
- For reference: approx. VDD/2 ± 15 mV.
- Refresh rate required to be doubled (tREFI = 3.9μs) when 85°C < TC < 95°C.

Viking Technology ♦ 2950 Red Hill Ave ♦ Costa Mesa, CA 92626  
Tel (800) 338-2361 Fax (949) 666-8159 ♦ Website: <http://www.Vikingtechnology.com>

This Data Sheet is subject to change without notice.  
Doc. # PS7PUxx6498xxx-LF ■ Revision E ■

**DEVICE CAPACITANCE**

Parameter	Symbol	DDR3-800		DDR3-1066		DDR3-1333		DDR3-1600		DDR3-1866		Units	Notes
		Min	Max	Min	Max	Min	Max	Min	Max	Min	Max		
Input/output capacitance (DQ, DM, DQS, DQS#, TDQS, TDQS#)	CIO	1.4	2.5	1.4	2.5	1.4	2.3	1.4	2.2	1.4	2.1	pF	1,2,3
Input capacitance, CK and CK#	CCK	0.8	1.6	0.8	1.6	0.8	1.4	0.8	1.4	0.8	1.3	pF	2,3
Input capacitance delta, CK and CK#	CDCK	0	0.15	0	0.15	0	0.15	0	0.15	0	0.15	pF	2,3,4
Input/output capacitance delta DQS and DQS#	CDDQS	0	0.2	0	0.2	0	0.15	0	0.15	0	0.15	pF	2,3,5
Input capacitance, (CTRL, ADD, CMD input-only pins)	CI	0.75	1.4	0.75	1.35	0.75	1.3	0.75	1.3	0.75	1.2	pF	2,3,6
Input/output capacitance of ZQ pin	CZQ	-	3	-	3	-	3	-	3	-	3	pF	2,3,7

- Notes:**
1. Although the DM, TDQS and TDQS# pins have different functions, the loading matches DQ and DQS
  2. This parameter is not subject to production test. It is verified by design and characterization. The capacitance is measured according to JEP147("PROCEDURE FOR MEASURING INPUT CAPACITANCE USING A VECTOR NETWORK ANALYZER(VNA)") with VDD, VDDQ, VSS, VSSQ applied and all other pins floating (except the pin under test, CKE, RESET# and ODT as necessary). VDD=VDDQ=1.35V, VBIAS=VDD/2 and on die termination off.
  3. This parameter applies to monolithic devices only; stacked/dual-die devices are not covered here
  4. Absolute value of CCK-CCK#
  5. Absolute value of CIO(DQS)-CIO(DQS#)
  6. CI applies to ODT, CS#, CKE, A0-A15, BA0-BA2, RAS#, CAS#, WE#.
  7. Maximum external load capacitance on ZQ pin: 5 pF.
  8. Values based on Micron DRAM.

**Viking Technology ♦ 2950 Red Hill Ave ♦ Costa Mesa, CA 92626**  
**Tel (800) 338-2361 Fax (949) 666-8159 ♦ Website: <http://www.Vikingtechnology.com>**

This Data Sheet is subject to change without notice.  
 Doc. # PS7PUxx6498xxx-LF ■ Revision E ■



**DC CHARACTERISTICS DEFINITION** (Recommended operating conditions unless otherwise noted, Tcase 0 to 85 °C)

Symbol	Conditions	Units	Notes
IDD0	<b>Operating one bank active-precharge current;</b> tCK = tCK(IDD), tRC = tRC(IDD), tRAS = tRASmin(IDD); CKE is HIGH, CS is HIGH between valid commands; Address bus inputs are SWITCHING; Data bus inputs are SWITCHING	mA	1, 2
IDD1	<b>Operating one bank active-read-precharge current;</b> IOUT = 0mA; BL = 8, CL = CL(IDD), AL = 0; tCK = tCK(IDD), tRC = tRC(IDD), tRAS = tRASmin(IDD), tRCD = tRCD(IDD); CKE is HIGH, CS is HIGH between valid commands; Address bus inputs are SWITCHING; Data pattern is same as IDD4W	mA	1, 2
IDD2P-S	<b>Precharge power-down current (slow exit);</b> All banks idle; tCK = tCK(IDD); CKE is LOW; Other control and address bus inputs are STABLE; Data bus inputs are FLOATING	mA	1, 3
IDD2P-F	<b>Precharge power-down current (fast exit);</b> All banks idle; tCK = tCK(IDD); CKE is LOW; Other control and address bus inputs are STABLE; Data bus inputs are FLOATING	mA	1, 3
IDD2Q	<b>Precharge quiet standby current;</b> All banks idle; tCK = tCK(IDD); CKE is HIGH, CS is HIGH; Other control and address bus inputs are STABLE; Data bus inputs are FLOATING	mA	1, 3
IDD2N	<b>Precharge standby current;</b> All banks idle; tCK = tCK(IDD); CKE is HIGH, CS is HIGH; Other control and address bus inputs are SWITCHING; Data bus inputs are SWITCHING	mA	1, 3
IDD3P	<b>Active power-down current;</b> All banks open; tCK = tCK(IDD); CKE is LOW; Other control and address bus inputs are STABLE; Data bus inputs are FLOATING	mA	1, 3
IDD3N	<b>Active standby current;</b> All banks open; tCK = tCK(IDD), tRAS = tRASmax(IDD), tRP = tRP(IDD); CKE is HIGH, CS is HIGH between valid commands; Other control and address bus inputs are SWITCHING; Data bus inputs are SWITCHING	mA	1, 3
IDD4W	<b>Operating burst write current;</b> All banks open, Continuous burst writes; BL = 8, CL = CL(IDD), AL = 0; tCK = tCK(IDD), tRAS = tRASmax(IDD), tRP = tRP(IDD); CKE is HIGH, CS is HIGH between valid commands; Address bus inputs are SWITCHING; Data bus inputs are SWITCHING	mA	1, 2
IDD4R	<b>Operating burst read current;</b> All banks open, Continuous burst reads, IOUT = 0mA; BL = 8, CL = CL(IDD), AL = 0; tCK = tCK(IDD), tRAS = tRASmax(IDD), tRP = tRP(IDD); CKE is HIGH, CS is HIGH between valid commands; Address bus inputs are SWITCHING; Data pattern is same as IDD4W	mA	1, 2
IDD5B	<b>Burst refresh current;</b> tCK = tCK(IDD); Refresh command at every tRFC(IDD) interval; CKE is HIGH, CS is HIGH between valid commands; Other control and address bus inputs are SWITCHING; Data bus inputs are SWITCHING	mA	1, 3
IDD6	<b>Self refresh current;</b> CK and CK at 0V; CKE ≤ 0.2V; Other control and address bus inputs are FLOATING; Data bus inputs are FLOATING	mA	1, 3
IDD6ET	<b>Extended Temperature Range Self-Refresh Current;</b> CK and CK at 0V; CKE ≤ 0.2V; Other control and address inputs are FLOATING; Data Bus inputs are FLOATING, PASR disabled, Applicable for MR2 setting A6=0 and A7=1	mA	1, 3
IDD7	<b>Operating bank interleave read current;</b> All bank interleaving reads, IOUT = 0mA; BL = 8, CL = CL(IDD), AL = tRCD(IDD)-1*tCK(IDD); tCK = tCK(IDD), tRC = tRC(IDD), tRRD = tRRD(IDD), tRCD = 1*tCK(IDD); CKE is HIGH, CS is HIGH between valid commands; Address bus inputs are STABLE during DESELECTs; Data pattern is same as IDD4R;	mA	1, 2

**Notes:**

- 1) Calculated values are from component data.
- 2) One module rank in the active IDD; the other rank in IDD2P-S (slow exit)
- 3) All ranks in this IDD condition.

**Viking Technology ♦ 2950 Red Hill Ave ♦ Costa Mesa, CA 92626**  
**Tel (800) 338-2361 Fax (949) 666-8159 ♦ Website: <http://www.Vikingtechnology.com>**

This Data Sheet is subject to change without notice.  
 Doc. # PS7PUxx6498xxx-LF ■ Revision E ■



**DC CHARACTERISTICS CURRENTS for SINGLE RANK with 1Gbit device**

Symbol	DDR3-1066	DDR3-1333	DDR3-1600	DDR3-1866	Unit
IDD0	256	264	272	288	mA
IDD1	328	344	360	376	mA
IDD2P-S	96	96	96	96	mA
IDD2P-F	96	96	96	96	mA
IDD2Q	120	120	120	120	mA
IDD2N	136	136	136	136	mA
IDD3P	112	112	112	112	mA
IDD3N	168	184	192	208	mA
IDD4R	480	576	664	760	mA
IDD4W	528	616	704	792	mA
IDD5B	1240	1240	1280	1320	mA
IDD6	96	96	96	96	mA
IDD7	936	1152	1192	1296	mA

**Notes:** Values based on Micron DRAM component datasheet.

**DC CHARACTERISTICS CURRENTS for SINGLE RANK with 2Gbit devices**

Symbol	DDR3-1066	DDR3-1333	DDR3-1600	DDR3-1866	Unit
IDD0	288	304	312	320	mA
IDD1	368	400	416	432	mA
IDD2P-S	96	96	96	96	mA
IDD2P-F	112	112	112	112	mA
IDD2Q	160	160	160	160	mA
IDD2N	168	168	168	168	Ma
IDD3P	168	168	168	168	mA
IDD3N	224	240	256	272	mA
IDD4R	544	656	752	832	mA
IDD4W	584	680	776	864	mA
IDD5B	1416	1432	1440	1456	mA
IDD6	96	96	96	96	mA
IDD7	968	1200	1248	1312	mA

**Notes:** Values based on Micron DRAM component datasheet.

**Viking Technology ♦ 2950 Red Hill Ave ♦ Costa Mesa, CA 92626**  
**Tel (800) 338-2361 Fax (949) 666-8159 ♦ Website: <http://www.Vikingtechnology.com>**

This Data Sheet is subject to change without notice.  
 Doc. # PS7PUxx6498xxx-LF ■ Revision E ■



**DC CHARACTERISTICS CURRENTS for SINGLE RANK with 4Gbit devices**

Symbol	DDR3-1066	DDR3-1333	DDR3-1600	DDR3-1866	Unit
IDD0	352	376	440	496	mA
IDD1	472	496	528	560	mA
IDD2P-S	144	144	144	144	mA
IDD2P-F	208	224	256	296	mA
DD2Q	216	224	256	280	mA
IDD2N	224	232	256	280	mA
IDD3P	256	280	304	328	mA
IDD3N	256	280	304	328	mA
IDD4R	984	1120	1256	1392	mA
IDD4W	760	880	1000	1128	mA
IDD5B	1792	1824	1880	1936	mA
IDD6	160	160	160	160	mA
IDD7	1280	1520	1760	2008	mA

Notes: Values based on Micron DRAM component datasheet.

**DC CHARACTERISTICS CURRENTS for DUAL RANK with 1Gbit devices**

Symbol	DDR3-1066	DDR3-1333	DDR3-1600	DDR3-1866	Unit
IDD0	352	360	368	384	mA
IDD1	424	440	456	472	mA
IDD2P-S	192	192	192	192	mA
IDD2P-F	192	192	192	192	mA
IDD2Q	240	240	240	240	mA
IDD2N	272	272	272	272	mA
IDD3P	224	224	224	224	mA
IDD3N	336	368	384	416	mA
IDD4R	576	672	760	856	mA
IDD4W	624	712	800	888	mA
IDD5B	1336	1336	1376	1416	mA
IDD6	192	192	192	192	mA
IDD7	1032	1248	1288	1392	mA

Notes: Values based on Micron DRAM component datasheet.

**Viking Technology ♦ 2950 Red Hill Ave ♦ Costa Mesa, CA 92626**  
**Tel (800) 338-2361 Fax (949) 666-8159 ♦ Website: <http://www.Vikingtechnology.com>**

This Data Sheet is subject to change without notice.  
 Doc. # PS7PUxx6498xxx-LF ■ Revision E ■



**DC CHARACTERISTICS CURRENTS for DUAL RANK with 2Gbit devices**

Symbol	DDR3-1066	DDR3-1333	DDR3-1600	DDR3-1866	Unit
IDD0	384	400	408	416	mA
IDD1	464	496	512	528	mA
IDD2P-S	192	192	192	192	mA
IDD2P-F	224	224	224	224	mA
IDD2Q	320	320	320	320	mA
IDD2N	336	336	336	336	mA
IDD3P	336	336	336	336	mA
IDD3N	448	480	512	544	mA
IDD4R	640	752	848	928	mA
IDD4W	680	776	872	960	mA
IDD5B	1512	1528	1536	1552	mA
IDD6	192	192	192	192	mA
IDD7	1064	1296	1344	1408	mA

Notes: Values based on Micron DRAM component datasheet.

**DC CHARACTERISTICS CURRENTS for DUAL RANK with 4Gbit devices**

Symbol	DDR3-1066	DDR3-1333	DDR3-1600	DDR3-1866	Unit
IDD0	448	472	536	592	mA
IDD1	568	592	624	656	mA
IDD2P-S	288	288	288	288	mA
IDD2P-F	416	448	512	592	mA
IDD2Q	432	448	512	560	mA
IDD2N	448	464	512	560	mA
IDD3P	512	560	608	656	mA
IDD3N	512	560	608	656	mA
IDD4R	1080	1216	1352	1488	mA
IDD4W	856	976	1096	1224	mA
IDD5B	1888	1920	1976	2032	mA
IDD6	320	320	320	320	mA
IDD7	1376	1616	1856	2104	mA

Notes: Values based on Micron DRAM component datasheet.

**Viking Technology ♦ 2950 Red Hill Ave ♦ Costa Mesa, CA 92626**  
**Tel (800) 338-2361 Fax (949) 666-8159 ♦ Website: <http://www.Vikingtechnology.com>**

This Data Sheet is subject to change without notice.  
 Doc. # PS7PUxx6498xxx-LF ■ Revision E ■



**DC CHARACTERISTICS CURRENTS for DUAL RANK with 8Gbit devices**

Symbol	DDR3-1066	DDR3-1333	DDR3-1600	DDR3-1866	Unit
IDD0	TBD	TBD	TBD	TBD	mA
IDD1	TBD	TBD	TBD	TBD	mA
IDD2P-S	TBD	TBD	TBD	TBD	mA
IDD2P-F	TBD	TBD	TBD	TBD	mA
IDD2Q	TBD	TBD	TBD	TBD	mA
IDD2N	TBD	TBD	TBD	TBD	mA
IDD3P	TBD	TBD	TBD	TBD	mA
IDD3N	TBD	TBD	TBD	TBD	mA
IDD4R	TBD	TBD	TBD	TBD	mA
IDD4W	TBD	TBD	TBD	TBD	mA
IDD5B	TBD	TBD	TBD	TBD	mA
IDD6	TBD	TBD	TBD	TBD	mA
IDD7	TBD	TBD	TBD	TBD	mA

**Notes:** Values based on Micron DRAM component datasheet.

**Viking Technology ♦ 2950 Red Hill Ave ♦ Costa Mesa, CA 92626**  
**Tel (800) 338-2361 Fax (949) 666-8159 ♦ Website: <http://www.Vikingtechnology.com>**

This Data Sheet is subject to change without notice.  
 Doc. # PS7PUxx6498xxx-LF ■ Revision E ■



**AC CHARACTERISTICS**

**Refresh parameters by device density**

Parameter	Symbol	1Gb	2Gb	4Gb	8Gb	Units	Notes	
REF command to ACT or REF command time	tRFC	110	160	260	350	ns		
Average periodic refresh interval	tREFI	0 °C ≤ TCASE ≤ 85 °C	7.8	7.8	7.8	7.8	µs	
		85 °C < TCASE ≤ 95 °C	3.9	3.9	3.9	3.9	µs	1

**Note:** 1) Users should refer to the DRAM supplier data sheet and/or the DIMM SPD to determine if DDR3 SDRAM devices support the following options or requirements referred to in this material.

**DDR3-800 Speed Bins and Operating Conditions**

Speed Bin		DDR3-800		Unit	Notes	
CL-nRCD-nRP		6-6-6				
Parameter	Symbol	min	max			
Internal read command to first data	tAA	15	20	ns		
ACT to internal read or write delay time	tRCD	15	—	ns		
PRE command period	tRP	15	—	ns		
ACT to ACT or REF command period	tRC	52.5	—	ns		
ACT to PRE command period	tRAS	37.5	9 * tREFI	ns		
CL = 6	CWL = 5	tCK(AVG)	2.5	3.3	ns	1, 2, 3
Supported CL Settings		6		nCK	13	
Supported CWL Settings		5		nCK		

**DDR3L-1066 Speed Bins and Operating Conditions**

Speed Bin		DDR3L-1066		Unit	Note	
CL-nRCD-nRP		7-7-7				
Parameter	Symbol	min	max			
Internal read command to first data	tAA	13.125	20	ns		
ACT to internal read or write delay time	tRCD	13.125	—	ns		
PRE command period	tRP	13.125	—	ns		
ACT to ACT or REF command period	tRC	50.625	—	ns		
ACT to PRE command period	tRAS	37.5	9 * tREFI	ns		
CL = 6	CWL = 5	tCK(AVG)	2.5	3.3	ns	1,2,3,6,
	CWL = 6	tCK(AVG)	Reserved		ns	1,2,3,4,
CL = 7	CWL = 5	tCK(AVG)	Reserved		ns	4,
	CWL = 6	tCK(AVG)	1.875	< 2.5	ns	1,2,3,4,
CL = 8	CWL = 5	tCK(AVG)	Reserved		ns	4,
	CWL = 6	tCK(AVG)	1.875	< 2.5	ns	1,2,3,
Supported CL Settings		6, 7, 8		nCK	13	
Supported CWL Settings		5, 6		nCK		

**Viking Technology ♦ 2950 Red Hill Ave ♦ Costa Mesa, CA 92626  
Tel (800) 338-2361 Fax (949) 666-8159 ♦ Website: <http://www.Vikingtechnology.com>**

This Data Sheet is subject to change without notice.  
Doc. # PS7PUxx6498xxx-LF ■ Revision E ■





**DDR3L-1333 Speed Bins and Operating Conditions**

Speed Bin		DDR3L-1333		Unit	Note	
CL-nRCD-nRP		9-9-9				
Parameter	Symbol	min	max			
Internal read command to first data	<i>tAA</i>	13.5 (13.125)5,11	20	ns		
ACT to internal read or write delay time	<i>tRCD</i>	13.5 (13.125)5,11	—	ns		
PRE command period	<i>tRP</i>	13.5 (13.125)5,11	—	ns		
ACT to ACT or REF command period	<i>tRC</i>	49.5 (49.125)5,11	—	ns		
ACT to PRE command period	<i>tRAS</i>	36	9 * tREFI	ns		
CL = 6	CWL = 5	<i>tCK(AVG)</i>	2.5	3.3	ns	1,2,3,7
	CWL = 6	<i>tCK(AVG)</i>	Reserved		ns	1,2,3,4,7
	CWL = 7	<i>tCK(AVG)</i>	Reserved		ns	4
CL = 7	CWL = 5	<i>tCK(AVG)</i>	Reserved		ns	4
	CWL = 6	<i>tCK(AVG)</i>	1.875	< 2.5	ns	1,2,3,4,7
			(Optional)5,11			
CWL = 7	<i>tCK(AVG)</i>	Reserved		ns	1,2,3,4	
CL = 8	CWL = 5	<i>tCK(AVG)</i>	Reserved		ns	4
	CWL = 6	<i>tCK(AVG)</i>	1.875	< 2.5	ns	1,2,3,7
	CWL = 7	<i>tCK(AVG)</i>	Reserved		ns	1,2,3,4
CL = 9	CWL = 5, 6	<i>tCK(AVG)</i>	Reserved		ns	4
	CWL = 7	<i>tCK(AVG)</i>	1.5	<1.875	ns	1,2,3,4
CL = 10	CWL = 5, 6	<i>tCK(AVG)</i>	Reserved		ns	4
	CWL = 7	<i>tCK(AVG)</i>	1.5	<1.875	ns	1,2,3
			(Optional)			
Supported CL Settings		6, 8, (7), 9, (10)		<i>nCK</i>		
Supported CWL Settings		5, 6, 7		<i>nCK</i>		

**DDR3L-1600 Speed Bins and Operating Conditions**

Speed Bin		DDR3L-1600		Unit	Note	
CL-nRCD-nRP		11-11-11				
Parameter	Symbol	min	max			
Internal read command to first data	<i>tAA</i>	13.75 (13.125)9	20	ns		
ACT to internal read or write delay time	<i>tRCD</i>	13.75 (13.125)9	—	ns		
PRE command period	<i>tRP</i>	13.75 (13.125)9	—	ns		
ACT to ACT or REF command period	<i>tRC</i>	48.75 (48.125)9	—	ns		
ACT to PRE command period	<i>tRAS</i>	35	9 * tREFI	ns		
CL = 6	CWL = 5	<i>tCK(AVG)</i>	2.5	3.3	ns	1,2,3,7
	CWL = 6	<i>tCK(AVG)</i>	Reserved		ns	1,2,3,4,7
	CWL = 7	<i>tCK(AVG)</i>	Reserved		ns	4
CL = 7	CWL = 5	<i>tCK(AVG)</i>	Reserved		ns	4
	CWL = 6	<i>tCK(AVG)</i>	1.875	< 2.5	ns	1,2,3,4,7
			(Optional)5,11			
CWL = 7	<i>tCK(AVG)</i>	Reserved		ns	1,2,3,4	
CL = 8	CWL = 5	<i>tCK(AVG)</i>	Reserved		ns	4
	CWL = 6	<i>tCK(AVG)</i>	1.875	< 2.5	ns	1,2,3,7

Viking Technology ♦ 2950 Red Hill Ave ♦ Costa Mesa, CA 92626  
Tel (800) 338-2361 Fax (949) 666-8159 ♦ Website: <http://www.Vikingtechnology.com>

This Data Sheet is subject to change without notice.  
Doc. # PS7PUxx6498xxx-LF ■ Revision E ■



Speed Bin		DDR3L-1600		Unit	Note	
CL-nRCD-nRP		11-11-11				
Parameter	Symbol	min	max			
CL = 9	CWL = 7	<i>tCK(AVG)</i>	Reserved		ns	1,2,3,4
	CWL = 5, 6	<i>tCK(AVG)</i>	Reserved		ns	4
	CWL = 7	<i>tCK(AVG)</i>	1.5	<1.875	ns	1,2,3,4
CL = 10	CWL = 5, 6	<i>tCK(AVG)</i>	Reserved		ns	4
	CWL = 7	<i>tCK(AVG)</i>	1.5	<1.875	ns	1,2,3
CL = 11	CWL = 5, 6, 7	<i>tCK(AVG)</i>	Reserved		ns	4
	CWL = 8	<i>tCK(AVG)</i>	1.25	<1.5	ns	1,2,3,9
Supported CL Settings		6, 8, 7, 9, 10, 11		<i>nCK</i>		
Supported CWL Settings		5, 6, 7, 8		<i>nCK</i>		

**DDR3-1866 Speed Bins and Operating Conditions**

Speed Bin		DDR3-1866		Unit	Note	
CL-nRCD-nRP		13-13-13				
Parameter	Symbol	min	max			
Internal read command to first data	<i>tAA</i>	13.91 (13.125)10	20	ns		
ACT to internal read or write delay time	<i>tRCD</i>	13.91 (13.125)10	—	ns		
PRE command period	<i>tRP</i>	13.91 (13.125)10	—	ns		
ACT to ACT or REF command period	<i>tRC</i>	47.91 (48.125)10	—	ns		
ACT to PRE command period	<i>tRAS</i>	34	9 * <i>tREFI</i>	ns		
CL = 6	CWL = 5	<i>tCK(AVG)</i>	2.5	3.3	ns	1,2,3,8
	CWL = 6	<i>tCK(AVG)</i>	Reserved		ns	1,2,3,4,8
	CWL = 7,8,9	<i>tCK(AVG)</i>	Reserved		ns	4
CL = 7	CWL = 5	<i>tCK(AVG)</i>	Reserved		ns	4
	CWL = 6	<i>tCK(AVG)</i>	1.875	2.5	ns	1,2,3,4,8
			(Optional)5,11			
CL = 8	CWL = 7,8,9	<i>tCK(AVG)</i>	Reserved		ns	1,2,3,4
	CWL = 5	<i>tCK(AVG)</i>	Reserved		ns	4
	CWL = 6	<i>tCK(AVG)</i>	1.875	< 2.5	ns	1,2,3,8
	CWL = 7	<i>tCK(AVG)</i>	Reserved		ns	1,2,3,4,8
CL = 9	CWL = 8,9	<i>tCK(AVG)</i>	Reserved		ns	4
	CWL = 5,6	<i>tCK(AVG)</i>	Reserved		ns	4
	CWL = 7	<i>tCK(AVG)</i>	1.5	1.875	ns	1,2,3,4,8
	CWL = 8	<i>tCK(AVG)</i>	Reserved		ns	4
CL = 10	CWL = 9	<i>tCK(AVG)</i>	Reserved		ns	4
	CWL = 5,6,	<i>tCK(AVG)</i>	Reserved		ns	4
	CWL = 7	<i>tCK(AVG)</i>	1.5	<1.875	ns	1,2,3,8
CL = 11	CWL = 8	<i>tCK(AVG)</i>	Reserved		ns	1,2,3,4,8
	CWL = 7	<i>tCK(AVG)</i>	Reserved		ns	4
	CWL = 5,6,7	<i>tCK(AVG)</i>	Reserved		ns	4
	CWL = 8	<i>tCK(AVG)</i>	1.25	1.5	ns	1,2,3,8
CL = 12	CWL = 9	<i>tCK(AVG)</i>	Reserved		ns	1,2,3,4
	CWL = 5, 6, 7,8	<i>tCK(AVG)</i>	Reserved		ns	4
	CWL = 9	<i>tCK(AVG)</i>	Reserved	Reserved	ns	1,2,3,4

**Viking Technology ♦ 2950 Red Hill Ave ♦ Costa Mesa, CA 92626**  
**Tel (800) 338-2361 Fax (949) 666-8159 ♦ Website: <http://www.Vikingtechnology.com>**

This Data Sheet is subject to change without notice.  
 Doc. # PS7PUxx6498xxx-LF ■ Revision E ■



Speed Bin		DDR3-1866		Unit	Note
CL-nRCD-nRP		13-13-13			
Parameter	Symbol	min	max		
CL = 13	CWL = 5,6,7,8	Reserved		ns	4
	CWL = 9	1.071	<1.25	ns	1,2,3,9
Supported CL Settings		6, 8, 7, 9, 10, 11,13		nCK	
Supported CWL Settings		5, 6, 7, 8, 9		nCK	

**Notes:**

1. Absolute Specification (TOPER; VDDQ = VDD = 1.35V (1.283V to 1.45V));
2. The CL setting and CWL setting result in tCK(AVG).MIN and tCK(AVG).MAX requirements. When making a selection of tCK(AVG), both need to be fulfilled: Requirements from CL setting as well as requirements from CWL setting.
3. tCK(AVG).MIN limits: Since CAS Latency is not purely analog - data and strobe output are synchronized by the DLL - all possible intermediate frequencies may not be guaranteed. An application should use the next smaller JEDEC standard tCK(AVG) value (3.0, 2.5, 1.875, 1.5, 1.25, 1.07, or 0.935 ns) when calculating CL [nCK] = tAA [ns] / tCK(AVG) [ns], rounding up to the next 'Supported CL', where tCK(AVG) = 3.0 ns should only be used for CL = 5 calculation.
4. tCK(AVG).MAX limits: Calculate tCK(AVG) = tAA.MAX / CL SELECTED and round the resulting tCK(AVG) down to the next valid speed bin (i.e. 3.3ns or 2.5ns or 1.875 ns or 1.5 ns or 1.25 ns or 1.07 ns or 0.935 ns). This result is tCK(AVG).MAX corresponding to CL SELECTED.
5. 'Reserved' settings are not allowed. User must program a different value.
6. 'Optional' settings allow certain devices in the industry to support this setting; however, it is not a mandatory feature. Refer to supplier's data sheet and/or the DIMM SPD information if and how this setting is supported.
7. Any DDR3-1066 speed bin also supports functional operation at lower frequencies as shown in the table which are not subject to Production Tests but verified by Design/Characterization.
8. Any DDR3-1333 speed bin also supports functional operation at lower frequencies as shown in the table which are not subject to Production Tests but verified by Design/Characterization.
9. Any DDR3-1600 speed bin also supports functional operation at lower frequencies as shown in the table which are not subject to Production Tests but verified by Design/Characterization.
10. For devices supporting optional down binning to CL=7 and CL=9, tAA/tRCD/tRPmin must be 13.125 ns or lower. SPD settings must be programmed to match. For example, DDR3-1333H devices supporting down binning to DDR3-1066F should program 13.125 ns in SPD bytes for tAAmin (Byte 16), tRCDmin (Byte 18), and tRPmin (Byte 20). DDR3-1600K devices supporting down binning to DDR3-1333H or DDR3-1066F should program 13.125 ns in SPD bytes for tAAmin (Byte16), tRCDmin (Byte 18), and tRPmin (Byte 20). Once tRP (Byte 20) is programmed to 13.125ns, tRCmin (Byte 21, 23) also should be programmed accordingly. For example, 49.125ns (tRASmin + tRPmin = 36 ns + 13.125 ns) for DDR3-1333H and 48.125ns (tRASmin + tRPmin = 35 ns + 13.125 ns) for DDR3-1600K.

Viking Technology ♦ 2950 Red Hill Ave ♦ Costa Mesa, CA 92626  
Tel (800) 338-2361 Fax (949) 666-8159 ♦ Website: <http://www.Vikingtechnology.com>

This Data Sheet is subject to change without notice.  
Doc. # PS7PUxx6498xxx-LF ■ Revision E ■



**Timing Parameters**

Parameter	Symbol	DDR3L-800		DDR3L-1066		DDR3L-1333		Units	Note
		MIN	MAX	MIN	MAX	MIN	MAX		
<b>Clock Timing</b>									
Minimum Clock Cycle Time (DLL off mode)	tCK(DLL_OF F)	8	-	8	-	8	-	ns	6
Average Clock Period	tCK(avg)	See Speed Bins Table						ps	
Clock Period	tCK(abs)	tCK(avg)min + tJIT(per)min	tCK(avg)max + tJIT(per)max	tCK(avg)min + tJIT(per)min	tCK(avg)max + tJIT(per)max	tCK(avg)min + tJIT(per)min	tCK(avg)max + tJIT(per)max	ps	
Average high pulse width	tCH(avg)	0.47	0.53	0.47	0.53	0.47	0.53	tCK(avg)	
Average low pulse width	tCL(avg)	0.47	0.53	0.47	0.53	0.47	0.53	tCK(avg)	
Clock Period Jitter	tJIT(per)	-100	100	-90	90	-80	80	ps	
Clock Period Jitter during DLL locking period	tJIT(per, lck)	-90	90	-80	80	-70	70	ps	
Cycle to Cycle Period Jitter	tJIT(cc)	200		180		160		ps	
Cycle to Cycle Period Jitter during DLL locking period	tJIT(cc, lck)	180		160		140		ps	
Cumulative error across 2 cycles	tERR(2per)	-147	147	-132	132	-118	118	ps	
Cumulative error across 3 cycles	tERR(3per)	-175	175	-157	157	-140	140	ps	
Cumulative error across 4 cycles	tERR(4per)	-194	194	-175	175	-155	155	ps	
Cumulative error across 5 cycles	tERR(5per)	-209	209	-188	188	-168	168	ps	
Cumulative error across 6 cycles	tERR(6per)	-222	222	-200	200	-177	177	ps	
Cumulative error across 7 cycles	tERR(7per)	-232	232	-209	209	-186	186	ps	
Cumulative error across 8 cycles	tERR(8per)	-241	241	-217	217	-193	193	ps	
Cumulative error across 9 cycles	tERR(9per)	-249	249	-224	224	-200	200	ps	
Cumulative error across 10 cycles	tERR(10per)	-257	257	-231	231	-205	205	ps	
Cumulative error across 11 cycles	tERR(11per)	-263	263	-237	237	-210	210	ps	
Cumulative error across 12 cycles	tERR(12per)	-269	269	-242	242	-215	215	ps	
Cumulative error across n = 13, 14 ... 49, 50 cycles	tERR(nper)	tERR(nper)min = (1 + 0.68ln(n))*tJIT(per)min tERR(nper)max = (1 + 0.68ln(n))*tJIT(per)max						ps	24
Absolute clock HIGH pulse width	tCH(abs)	0.43	-	0.43	-	0.43	-	tCK(avg)	25
Absolute clock Low pulse width	tCL(abs)	0.43	-	0.43	-	0.43	-	tCK(avg)	26
<b>Data Timing</b>									
DQS, DQS to DQ skew, per group, per access	tDQSQ	-	200	-	150	-	125	ps	13
DQ output hold time from DQS, DQS	tQH	0.38	-	0.38	-	0.38	-	tCK(avg)	13, g
DQ low-impedance time from CK, CK	tLZ(DQ)	-800	400	-600	300	-500	250	ps	13,14, f
DQ high-impedance time from CK, CK	tHZ(DQ)	-	400	-	300	-	250	ps	13,14, f
Data setup time to DQS, DQS referenced to VIH(AC)VIL(AC) levels	tDS(base)	75	-	25	-	30	-	ps	d, 17
Data hold time to DQS, DQS referenced to VIH(AC)VIL(AC) levels	tDH(base)	150	-	100	-	65	-	ps	d, 17
DQ and DM Input pulse width for each input	tDIPW	600	-	490	-	400	-	ps	28
<b>Data Strobe Timing</b>									
DQS, DQS READ Preamble	tRPRE	0.9	Note 19	0.9	Note 19	0.9	Note 19	tCK	13, 19, g
DQS, DQS differential READ Postamble	tRPST	0.3	Note 11	0.3	Note 11	0.3	Note 11	tCK	11, 13, b
DQS, DQS output high time	tQSH	0.38	-	0.38	-	0.4	-	tCK(avg)	13, g
DQS, DQS output low time	tQSL	0.38	-	0.38	-	0.4	-	tCK(avg)	13, g
DQS, DQS WRITE Preamble	tWPRE	0.9	-	0.9	-	0.9	-	tCK	
DQS, DQS WRITE Postamble	tWPST	0.3	-	0.3	-	0.3	-	tCK	
DQS, DQS rising edge output access time from rising CK, CK	tDQSCK	-400	400	-300	300	-255	255	ps	13, f
DQS, DQS low-impedance time (Referenced from RL-1)	tLZ(DQS)	-800	400	-600	300	-500	250	ps	13,14, f
DQS, DQS high-impedance time (Referenced from RL+BL/2)	tHZ(DQS)	-	400	-	300	-	250	ps	12,13,14
DQS, DQS differential input low pulse width	tDQSL	0.45	0.55	0.45	0.55	0.45	0.55	tCK	29, 31
DQS, DQS differential input high pulse width	tDQSH	0.45	0.55	0.45	0.55	0.45	0.55	tCK	30, 31
DQS, DQS rising edge to CK, CK rising edge	tDQSS	-0.25	0.25	-0.25	0.25	-0.25	0.25	tCK(avg)	c
DQS, DQS falling edge setup time to CK, CK rising edge	tDSS	0.2	-	0.2	-	0.2	-	tCK(avg)	c, 32
DQS, DQS falling edge hold time to CK, CK rising edge	tDSH	0.2	-	0.2	-	0.2	-	tCK(avg)	c, 32

**Viking Technology ♦ 2950 Red Hill Ave ♦ Costa Mesa, CA 92626**  
**Tel (800) 338-2361 Fax (949) 666-8159 ♦ Website: <http://www.Vikingtechnology.com>**

This Data Sheet is subject to change without notice.  
 Doc. # PS7PUxx6498xxx-LF ■ Revision E ■



**Timing Parameters (Cont.)**

Speed		DDR3L-800		DDR3L-1066		DDR3L-1333		Units	Note	
Parameter	Symbol	MIN	MAX	MIN	MAX	MIN	MAX			
<b>Command and Address Timing</b>										
DLL locking time	tDLLK	512	-	512	-	512	-	nCK		
internal READ Command to PRECHARGE Command delay	tRTP	max (4nCK,7.5ns)	-	max (4nCK,7.5ns)	-	max (4nCK,7.5ns)	-		e	
Delay from start of internal write transaction to internal read command	tWTR	max (4nCK,7.5ns)	-	max (4nCK,7.5ns)	-	max (4nCK,7.5ns)	-		e,18	
WRITE recovery time	tWR	15	-	15	-	15	-	ns	e	
Mode Register Set command cycle time	tMRD	4	-	4	-	4	-	nCK		
Mode Register Set command update delay	tMOD	max (12nCK,15ns)	-	max (12nCK,15ns)	-	max (12nCK,15ns)	-			
CAS# to CAS# command delay	tCCD	4	-	4	-	4	-	nCK		
Auto precharge write recovery + precharge time	tDAL(min)	WR + roundup (tRP / tCK(AVG))							nCK	
Multi-Purpose Register Recovery Time	tMPRR	1	-	1	-	1	-	nCK	22	
ACTIVE to PRECHARGE command period	tRAS	See 13.3 " Speed Bins and CL, tRCD, tRP, tRC and tRAS for corresponding Bin"							ns	e
ACTIVE to ACTIVE command period for 1KB page size	tRRD	max (4nCK,10ns)	-	max (4nCK,7.5ns)	-	max (4nCK,6ns)	-		e	
ACTIVE to ACTIVE command period for 2KB page size	tRRD	max (4nCK,10ns)	-	max (4nCK,10ns)	-	max (4nCK,7.5ns)	-		e	
Four activate window for 1KB page size	tFAW	40	-	37.5	-	30	-	ns	e	
Four activate window for 2KB page size	tFAW	50	-	50	-	45	-	ns	e	
Command and Address setup time to CK, CK referenced to VIH(AC) / VIL(AC) levels	tIS(base)	200	-	125	-	65	-	ps	b,16	
Command and Address hold time from CK, CK referenced to VIH(AC) / VIL(AC) levels	tIH(base)	275	-	200	-	140	-	ps	b,16	
Command and Address setup time to CK, CK referenced to VIH(AC) / VIL(AC) levels	tIS(base) AC150	200 + 150	-	125 + 150	-	65+125	-	ps	b,16,27	
Control & Address Input pulse width for each input	tIPW	900	-	780	-	620	-	ps	28	
<b>Calibration Timing</b>										
Power-up and RESET calibration time	tZQinit	512	-	512	-	512	-	nCK		
Normal operation Full calibration time	tZQoper	256	-	256	-	256	-	nCK		
Normal operation short calibration time	tZQCS	64	-	64	-	64	-	nCK	23	
<b>Reset Timing</b>										
Exit Reset from CKE HIGH to a valid command	tXPR	max(5nCK, tRFC + 10ns)	-	max(5nCK, tRFC + 10ns)	-	max(5nCK, tRFC + 10ns)	-			
<b>Self Refresh Timing</b>										
Exit Self Refresh to commands not requiring a locked DLL	tXS	max(5nCK, tRFC + 10ns)	-	max(5nCK, tRFC + 10ns)	-	max(5nCK, tRFC + 10ns)	-			
Exit Self Refresh to commands requiring a locked DLL	tXSDLL	tDLLK(min)	-	tDLLK(min)	-	tDLLK(min)	-	nCK		
Minimum CKE low width for Self refresh entry to exit timing	tCKESR	tCKE(min) + 1tCK	-	tCKE(min) + 1tCK	-	tCKE(min) + 1tCK	-			
Valid Clock Requirement after Self Refresh Entry (SRE) or Power-Down Entry (PDE)	tCKSRE	max(5nCK, 10ns)	-	max(5nCK, 10ns)	-	max(5nCK, 10ns)	-			
Valid Clock Requirement before Self Refresh Exit (SRX) or Power-Down Exit (PDX) or Reset Exit	tCKSRX	max(5nCK, 10ns)	-	max(5nCK, 10ns)	-	max(5nCK, 10ns)	-			

**Viking Technology ♦ 2950 Red Hill Ave ♦ Costa Mesa, CA 92626**  
**Tel (800) 338-2361 Fax (949) 666-8159 ♦ Website: <http://www.Vikingtechnology.com>**

This Data Sheet is subject to change without notice.  
 Doc. # PS7PUxx6498xxx-LF ■ Revision E ■



**Timing Parameters(Cont.)**

Speed		DDR3L-800		DDR3L-1066		DDR3L-1333		Units	Note
Parameter	Symbol	MIN	MAX	MIN	MAX	MIN	MAX		
<b>Power Down Timing</b>									
Exit Power Down with DLL on to any valid com-mand;Exit Precharge Power Down with DLL frozen to commands not requiring a locked DLL	tXP	max (3nCK, 7.5ns)	-	max (3nCK, 7.5ns)	-	max (3nCK,6ns)	-		
Exit Precharge Power Down with DLL frozen to com-mands requiring a locked DLL	tXPDLL	max (10nCK, 24ns)	-	max (10nCK, 24ns)	-	max (10nCK, 24ns)	-		2
CKE minimum pulse width	tCKE	max (3nCK, 7.5ns)	-	max (3nCK, 5.625ns)	-	max (3nCK, 5.625ns)	-		
Command pass disable delay	tCPDED	1	-	1	-	1	-	nCK	
Power Down Entry to Exit Timing	tPD	tCKE(min)	9*tREFI	tCKE(min)	9*tREFI	tCKE(min)	9*tREFI	tCK	15
Timing of ACT command to Power Down entry	tACTPDEN	1	-	1	-	1	-	nCK	20
Timing of PRE command to Power Down entry	tPRPDEN	1	-	1	-	1	-	nCK	20
Timing of RD/RDA command to Power Down entry	tRDPDEN	RL + 4 + 1	-	RL + 4 + 1	-	RL + 4 + 1	-		
Timing of WR command to Power Down entry (BL8OTF, BL8MRS, BL4OTF)	tWRPDEN	WL + 4 +(tWR/ tCK(avg))	-	WL + 4 +(tWR/ tCK(avg))	-	WL + 4 +(tWR/ tCK(avg))	-	nCK	9
Timing of WRA command to Power Down entry (BL8OTF, BL8MRS, BL4OTF)	tWRAPDEN	WL + 4 +WR + 1	-	WL + 4 +WR + 1	-	WL + 4 +WR + 1	-	nCK	10
Timing of WR command to Power Down entry (BL4MRS)	tWRPDEN	WL + 4 +(tWR/ tCK(avg))	-	WL + 4 +(tWR/ tCK(avg))	-	WL + 4 +(tWR/ tCK(avg))	-	nCK	9
Timing of WRA command to Power Down entry (BL4MRS)	tWRAPDEN	WL + 4 +WR + 1	-	WL + 4 +WR + 1	-	WL + 4 +WR + 1	-	nCK	10
Timing of REF command to Power Down entry	tREFPDEN	1	-	1	-	1	-		20,21
Timing of MRS command to Power Down entry	tMRSPDEN	tMOD(min)	-	tMOD(min)	-	tMOD(min)	-		
<b>ODT Timing</b>									
ODT high time without write command or with write command and BC4	ODTH4	4	-	4	-	4	-	nCK	
ODT high time with Write command and BL8	ODTH8	6	-	6	-	6	-	nCK	
Asynchronous RTT turn-on delay (Power-Down with DLL frozen)	tAONPD	2	8.5	2	8.5	2	8.5	ns	
Asynchronous RTT turn-off delay (Power-Down with DLL frozen)	tAOFPD	2	8.5	2	8.5	2	8.5	ns	
ODT turn-on	tAON	-400	400	-300	300	-250	250	ps	7,f
RTT_NOM and RTT_WR turn-off time from ODTLoff reference	tAOF	0.3	0.7	0.3	0.7	0.3	0.7	tCK(avg)	8,f
RTT dynamic change skew	tADC	0.3	0.7	0.3	0.7	0.3	0.7	tCK(avg)	f
<b>Write Leveling Timing</b>									
First DQS pulse rising edge after tDQSS margining mode is programmed	tWLMRD	40	-	40	-	40	-	tCK	3
DQS/DQS delay after tDQSS margining mode is programmed	tWLDQSEN	25	-	25	-	25	-	tCK	3
Setup time for tDQSS latch	tWLS	325	-	245	-	195	-	ps	
Write leveling hold time from rising DQS, DQS crossing to rising CK, CK crossing	tWLH	325	-	245	-	195	-	ps	
Write leveling output delay	tWLO	0	9	0	9	0	9	ns	
Write leveling output error	tWLOE	0	2	0	2	0	2	ns	

**Timing Parameters (Cont.)**

Speed		DDR3L-1600		DDR3L-1866		Units	Note
Parameter	Symbol	MIN	MAX	MIN	MAX		
<b>Clock Timing</b>							
Minimum Clock Cycle Time (DLL off mode)	tCK(DLL_OF F)	8	-	8	-	ns	6
Average Clock Period	tCK(avg)	See Speed Bins Table				ps	
Clock Period	tCK(abs)	tCK(avg)min	tCK(avg)max	tCK(avg)min	tCK(avg)max	ps	
		tJIT(per)min	tJIT(per)max	tJIT(per)min	tJIT(per)max		

**Viking Technology ♦ 2950 Red Hill Ave ♦ Costa Mesa, CA 92626**  
**Tel (800) 338-2361 Fax (949) 666-8159 ♦ Website: <http://www.Vikingtechnology.com>**

This Data Sheet is subject to change without notice.  
 Doc. # PS7PUxx6498xxx-LF ■ Revision E ■



Speed Parameter	Symbol	DDR3L-1600		DDR3L-1866		MIN	MAX	Units	Note
		MIN	MAX	MIN	MAX				
<b>Clock Timing</b>									
Average high pulse width	tCH(avg)	0.47	0.53	0.47	0.53			tCK(avg)	
Average low pulse width	tCL(avg)	0.47	0.53	0.47	0.53			tCK(avg)	
Clock Period Jitter	tJIT(per)	-70	70	-60	60			ps	
Clock Period Jitter during DLL locking period	tJIT(per, lck)	-60	60	-50	50			ps	
Cycle to Cycle Period Jitter	tJIT(cc)	140		120				ps	
Cycle to Cycle Period Jitter during DLL locking period	tJIT(cc, lck)	120		100				ps	
Cumulative error across 2 cycles	tERR(2per)	- 103	103	- 88	88			ps	
Cumulative error across 3 cycles	tERR(3per)	- 122	122	- 105	105			ps	
Cumulative error across 4 cycles	tERR(4per)	- 136	136	- 117	117			ps	
Cumulative error across 5 cycles	tERR(5per)	- 147	147	- 126	126			ps	
Cumulative error across 6 cycles	tERR(6per)	- 155	155	- 133	133			ps	
Cumulative error across 7 cycles	tERR(7per)	- 163	163	- 139	139			ps	
Cumulative error across 8 cycles	tERR(8per)	- 169	169	- 145	145			ps	
Cumulative error across 9 cycles	tERR(9per)	- 175	175	- 150	150			ps	
Cumulative error across 10 cycles	tERR(10per)	- 180	180	- 154	154			ps	
Cumulative error across 11 cycles	tERR(11per)	- 184	184	- 158	158			ps	
Cumulative error across 12 cycles	tERR(12per)	- 188	188	- 161	161			ps	
Cumulative error across n = 13, 14 ... 49, 50 cycles	tERR(nper)	tERR(nper)min = (1 + 0.68ln(n))*tJIT(per)min tERR(nper)max = (1 + 0.68ln(n))*tJIT(per)max						ps	24
Absolute clock HIGH pulse width	tCH(abs)	0.43	-	0.43	-			tCK(avg)	25
Absolute clock Low pulse width	tCL(abs)	0.43	-	0.43	-			tCK(avg)	26
<b>Data Timing</b>									
DQS, DQS to DQ skew, per group, per access	tDQSQ	-	100	-	85			ps	13
DQ output hold time from DQS, DQS	tQH	0.38	-	0.38	-			tCK(avg)	13, g
DQ low-impedance time from CK, CK	tLZ(DQ)	-450	225	-390	195			ps	13,14, f
DQ high-impedance time from CK, CK	tHZ(DQ)	-	225	-	195			ps	13,14, f
Data setup time to DQS, DQS referenced to VIH(AC)VIL(AC) levels	tDS(base)	10	-	-	-			ps	d, 17
Data hold time to DQS, DQS referenced to VIH(AC)VIL(AC) levels	tDH(base)	-	-	0	-			ps	d, 17
DQ and DM Input pulse width for each input	tDIPW	360	-	320	-			ps	28
<b>Data Strobe Timing</b>									
DQS, DQS READ Preamble	tRPRE	0.9	Note 19	0.9	Note 19			tCK	13, 19, g
DQS, DQS differential READ Postamble	tRPST	0.3	Note 11	0.3	Note 11			tCK	11, 13, b
DQS, DQS output high time	tQSH	0.4	-	0.4	-			tCK(avg)	13, g
DQS, DQS output low time	tQSL	0.4	-	0.4	-			tCK(avg)	13, g
DQS, DQS WRITE Preamble	tWPRE	0.9	-	0.9	-			tCK	
DQS, DQS WRITE Postamble	tWPST	0.3	-	0.3	-			tCK	
DQS, DQS rising edge output access time from rising CK, CK	tDQSCK	-225	225	-195	195			ps	13,f
DQS, DQS low-impedance time (Referenced from RL-1)	tLZ(DQS)	-450	225	-390	195			ps	13,14,f
DQS, DQS high-impedance time (Referenced from RL+BL/2)	tHZ(DQS)	-	225	-	195			ps	12,13,14
DQS, DQS differential input low pulse width	tDQSL	0.45	0.55	0.45	0.55			tCK	29, 31
DQS, DQS differential input high pulse width	tDQSH	0.45	0.55	0.45	0.55			tCK	30, 31
DQS, DQS rising edge to CK, CK rising edge	tDQSS	-0.27	0.27	-0.27	0.27			tCK(avg)	c
DQS, DQS falling edge setup time to CK, CK rising edge	tDSS	0.18	Note 19	0.18	-			tCK(avg)	c, 32
DQS, DQS falling edge hold time to CK, CK rising edge	tDSH	0.18	Note 11	0.18	-			tCK(avg)	c, 32

**Viking Technology ♦ 2950 Red Hill Ave ♦ Costa Mesa, CA 92626**  
**Tel (800) 338-2361 Fax (949) 666-8159 ♦ Website: <http://www.Vikingtechnology.com>**

This Data Sheet is subject to change without notice.  
 Doc. # PS7PUxx6498xxx-LF ■ Revision E ■



**Timing Parameters (Cont.)**

Speed	Parameter	Symbol	DDR3L-1600		DDR3L-1866		Units		Note	
			MIN	MAX	MIN	MAX	MIN	MAX		
<b>Command and Address Timing</b>										
	DLL locking time	tDLLK	512	-	512	-		nCK		
	internal READ Command to PRECHARGE Command delay	tRTP	max (4nCK,7.5ns)	-	max (4nCK,7.5ns)	-			e	
	Delay from start of internal write transaction to internal read command	tWTR	max (4nCK,7.5ns)	-	max (4nCK,7.5ns)	-			e,18	
	WRITE recovery time	tWR	15	-	15	-		ns	e	
	Mode Register Set command cycle time	tMRD	4	-	4	-		nCK		
	Mode Register Set command update delay	tMOD	max (12nCK,15ns)	-	max (12nCK,15ns)	-				
	CAS# to CAS# command delay	tCCD	4	-	4	-		nCK		
	Auto precharge write recovery + precharge time	tDAL(min)	WR + roundup (tRP / tCK(AVG))						nCK	
	Multi-Purpose Register Recovery Time	tMPRR	1	-	1	-		nCK	22	
	ACTIVE to PRECHARGE command period	tRAS	See " Speed Bins and CL, tRCD, tRP, tRC and tRAS for corresponding Bin"						ns	e
	ACTIVE to ACTIVE command period for 1KB page size	tRRD	max (4nCK,6ns)	-	max (4nCK,5ns)	-			e	
	ACTIVE to ACTIVE command period for 2KB page size	tRRD	max (4nCK,7.5ns)	-	max (4nCK,6ns)	-			e	
	Four activate window for 1KB page size	tFAW	30	-	27	-		ns	e	
	Four activate window for 2KB page size	tFAW	40	-	35	-		ns	e	
	Command and Address setup time to CK, CK referenced to VIH(AC) / VIL(AC) levels	tIS(base)	170	-	-	-		ps	b,16	
	Command and Address hold time from CK, CK referenced to VIH(AC) / VIL(AC) levels	tIH(base)	120	-	100	-		ps	b,16	
	Command and Address setup time to CK, CK referenced to VIH(AC) / VIL(AC) levels	tIS(base) AC150	-	-	-	-		ps	b,16,27	
	Control & Address Input pulse width for each input	tIPW	560	-	535	-		ps	28	
<b>Calibration Timing</b>										
	Power-up and RESET calibration time	tZQinit	512	-	Max(512nCK,640ns)	-		nCK		
	Normal operation Full calibration time	tZQoper	256	-	Max(256nCK,320ns)	-		nCK		
	Normal operation short calibration time	tZQCS	64	-	Max(64nCK,80ns)	-		nCK	23	
<b>Reset Timing</b>										
	Exit Reset from CKE HIGH to a valid command	tXPR	max(5nCK, tRFC + 10ns)	-	max(5nCK, tRFC + 10ns)	-				
<b>Self Refresh Timing</b>										
	Exit Self Refresh to commands not requiring a locked DLL	tXS	max(5nCK, tRFC + 10ns)	-	max(5nCK, tRFC + 10ns)	-				
	Exit Self Refresh to commands requiring a locked DLL	tXSDLL	tDLLK(min)	-	tDLLK(min)	-		nCK		
	Minimum CKE low width for Self refresh entry to exit timing	tCKESR	tCKE(min) + 1tCK	-	tCKE(min) + 1tCK	-				
	Valid Clock Requirement after Self Refresh Entry (SRE) or Power-Down Entry (PDE)	tCKSRE	max(5nCK, 10ns)	-	max(5nCK, 10ns)	-				
	Valid Clock Requirement before Self Refresh Exit (SRX) or Power-Down Exit (PDX) or Reset Exit	tCKSRX	max(5nCK, 10ns)	-	max(5nCK, 10ns)	-				

**Viking Technology ♦ 2950 Red Hill Ave ♦ Costa Mesa, CA 92626  
Tel (800) 338-2361 Fax (949) 666-8159 ♦ Website: <http://www.Vikingtechnology.com>**

This Data Sheet is subject to change without notice.  
Doc. # PS7PUxx6498xxx-LF ■ Revision E ■





**Timing Parameters(Cont.)**

Speed		DDR3L-1600		DDR3L-1866				Units	Note
Parameter	Symbol	MIN	MAX	MIN	MAX	MIN	MAX		
<b>Power Down Timing</b>									
Exit Power Down with DLL on to any valid com-mand;Exit Precharge Power Down with DLL frozen to commands not requiring a locked DLL	tXP	max (3nCK, 6ns)	-	max (3nCK, 6ns)	-				
Exit Precharge Power Down with DLL frozen to com-mands requiring a locked DLL	tXPDLL	max (10nCK, 24ns)	-	max (10nCK, 24ns)	-				2
CKE minimum pulse width	tCKE	max (3nCK, 5ns)	-	max (3nCK, 5ns)	-				
Command pass disable delay	tCPDED	1	-	2	-			nCK	
Power Down Entry to Exit Timing	tPD	tCKE(min)	9*tREFI	tCKE(min)	9*tREFI			tCK	15
Timing of ACT command to Power Down entry	tACTPDEN	1	-	2	-			nCK	20
Timing of PRE command to Power Down entry	tPRPDEN	1	-	2	-			nCK	20
Timing of RD/RDA command to Power Down entry	tRDPDEN	RL + 4 + 1	-	RL + 4 + 1	-				
Timing of WR command to Power Down entry (BL8OTF, BL8MRS, BL4OTF)	tWRPDEN	WL + 4 +(tWR/tCK(avg))	-	WL + 4 +(tWR/tCK(avg))	-			nCK	9
Timing of WRA command to Power Down entry (BL8OTF, BL8MRS, BL4OTF)	tWRAPDEN	WL + 4 +WR + 1	-	WL + 4 +WR + 1	-			nCK	10
Timing of WR command to Power Down entry (BL4MRS)	tWRPDEN	WL + 4 +(tWR/tCK(avg))	-	WL + 4 +(tWR/tCK(avg))	-			nCK	9
Timing of WRA command to Power Down entry (BL4MRS)	tWRAPDEN	WL + 4 +WR + 1	-	WL + 4 +WR + 1	-			nCK	10
Timing of REF command to Power Down entry	tREFPDEN	1	-	2	-				20,21
Timing of MRS command to Power Down entry	tMRSPDEN	tMOD(min)	-	tMOD(min)	-				
<b>ODT Timing</b>									
ODT high time without write command or with write command and BC4	ODTH4	4	-	4	-			nCK	
ODT high time with Write command and BL8	ODTH8	6	-	6	-			nCK	
Asynchronous RTT turn-on delay (Power-Down with DLL frozen)	tAONPD	2	8.5	2	8.5			ns	
Asynchronous RTT turn-off delay (Power-Down with DLL frozen)	tAOFPD	2	8.5	2	8.5			ns	
ODT turn-on	tAON	-225	225	-195	195			ps	7,f
RTT_NOM and RTT_WR turn-off time from ODTLoff reference	tAOF	0.3	0.7	0.3	0.7			tCK(avg)	8,f
RTT dynamic change skew	tADC	0.3	0.7	0.3	0.7			tCK(avg)	f
<b>Write Leveling Timing</b>									
First DQS pulse rising edge after tDQSS margining mode is programmed	tWLMRD	40	-	40	-			tCK	3
DQS/DQS delay after tDQSS margining mode is programmed	tWLDQSEN	25	-	25	-			tCK	3
Setup time for tDQSS latch	tWLS	165	-	140	-			ps	
Write leveling hold time from rising DQS, DQS crossing to rising CK, CK crossing	tWLH	165	-	140	-			ps	
Write leveling output delay	tWLO	0	7.5	0	7.5			ns	
Write leveling output error	tWLOE	0	2	0	2			ns	

**Viking Technology ♦ 2950 Red Hill Ave ♦ Costa Mesa, CA 92626**  
**Tel (800) 338-2361 Fax (949) 666-8159 ♦ Website: <http://www.Vikingtechnology.com>**

This Data Sheet is subject to change without notice.  
 Doc. # PS7PUxx6498xxx-LF ■ Revision E ■



### 18.1 Jitter Notes

- Unit 'tCK(avg)' represents the actual tCK(avg) of the input clock under operation. Unit 'nCK' represents one clock cycle of the input clock, counting the actual clock edges. ex) tMRD = 4 [nCK] means; if one Mode Register Set command is registered at T<sub>m</sub>, another Mode Register Set command may be registered at T<sub>m</sub>+4, even if (T<sub>m</sub>+4 - T<sub>m</sub>) is 4 x tCK(avg) + tERR(4per),min.
- These parameters are measured from a command/address signal (CKE, CS, RAS, CAS, WE, ODT, BA0, A0, A1, etc.) transition edge to its respective clock signal (CK/CK) crossing. The spec values are not affected by the amount of clock jitter applied (i.e. tJIT(per), tJIT(cc), etc.), as the setup and hold are relative to the clock signal crossing that latches the command/address. That is, these parameters should be met whether clock jitter is present or not.
- These parameters are measured from a data strobe signal (DQS(L/U), DQS(L/U)) crossing to its respective clock signal (CK, CK) crossing. The spec values are not affected by the amount of clock jitter applied (i.e. tJIT(per), tJIT(cc), etc.), as these are relative to the clock signal crossing. That is, these parameters should be met whether clock jitter is present or not.
- These parameters are measured from a data signal (DM(L/U), DQ(L/U)0, DQ(L/U)1, etc.) transition edge to its respective data strobe signal (DQS(L/U), DQS(L/U)#) crossing. Specific Note e For these parameters, the DDR3 SDRAM device supports tnPARAM [nCK] = RU{ tPARAM [ns] / tCK(avg) [ns] }, which is in clock cycles, assuming all input clock jitter specifications are satisfied. For example, the device will support tnRP = RU{tRP / tCK(avg)}, which is in clock cycles, if all input clock jitter specifications are met. This means: For DDR3-800 6-6-6, of which tRP = 15ns, the device will support tnRP = RU{tRP / tCK(avg)} = 6, as long as the input clock jitter specifications are met, i.e. Precharge command at T<sub>m</sub> and Active command at T<sub>m</sub>+6 is valid even if (T<sub>m</sub>+6 - T<sub>m</sub>) is less than 15ns due to input clock jitter.
- When the device is operated with input clock jitter, this parameter needs to be derated by the actual tERR(mper),act of the input clock, where 2 <= m <= 12. (output deratings are relative to the SDRAM input clock.) For example, if the measured jitter into a DDR3-800 SDRAM has tERR(mper),act,min = - 172 ps and tERR(mper),act,max = + 193 ps, then tDQSCK,min(derated) = tDQSCK,min - tERR(mper),act,max = - 400 ps - 193 ps = - 593 ps and tDQSCK,max(derated) = tDQSCK,max - tERR(mper),act,min = 400 ps + 172 ps = + 572 ps. Similarly, tLZ(DQ) for DDR3-800 derates to tLZ(DQ),min(derated) = 800 ps - 193 ps = - 993 ps and tLZ(DQ),max(derated) = 400 ps + 172 ps = + 572 ps. (Caution on the min/max usage!) Note that tERR(mper),act,min is the minimum measured value of tERR(nper) where 2 <= n <= 12, and tERR(mper),act,max is the maximum measured value of tERR(nper) where 2 <= n <= 12.
- When the device is operated with input clock jitter, this parameter needs to be derated by the actual tJIT(per),act of the input clock. (output deratings are relative to the SDRAM input clock.) For example, if the measured jitter into a DDR3-800 SDRAM has tCK(avg),act = 2500 ps, tJIT(per),act,min = - 72 ps and tJIT(per),act,max = + 93 ps, then tRPRE,min(derated) = tRPRE,min + tJIT(per),act,min = 0.9 x tCK(avg),act + tJIT(per),act,min = 0.9 x 2500 ps - 72 ps = + 2178 ps. Similarly, tQH,min(derated) = tQH,min + tJIT(per),act,min = 0.38 x tCK(avg),act + tJIT(per),act,min = 0.38 x 2500 ps - 72 ps = + 878 ps. (Caution on the min/max usage!)= 0.38 x 2500 ps - 72 ps = + 878 ps. (Caution on the min/max usage!)

**Viking Technology ♦ 2950 Red Hill Ave ♦ Costa Mesa, CA 92626**  
**Tel (800) 338-2361 Fax (949) 666-8159 ♦ Website: <http://www.Vikingtechnology.com>**

This Data Sheet is subject to change without notice.  
 Doc. # PS7PUxx6498xxx-LF ■ Revision E ■

