



Chipsmall Limited consists of a professional team with an average of over 10 year of expertise in the distribution of electronic components. Based in Hongkong, we have already established firm and mutual-benefit business relationships with customers from,Europe,America and south Asia,supplying obsolete and hard-to-find components to meet their specific needs.

With the principle of "Quality Parts,Customers Priority,Honest Operation,and Considerate Service",our business mainly focus on the distribution of electronic components. Line cards we deal with include Microchip,ALPS,ROHM,Xilinx,Pulse,ON,Everlight and Freescale. Main products comprise IC,Modules,Potentiometer,IC Socket,Relay,Connector.Our parts cover such applications as commercial,industrial, and automotives areas.

We are looking forward to setting up business relationship with you and hope to provide you with the best service and solution. Let us make a better world for our industry!



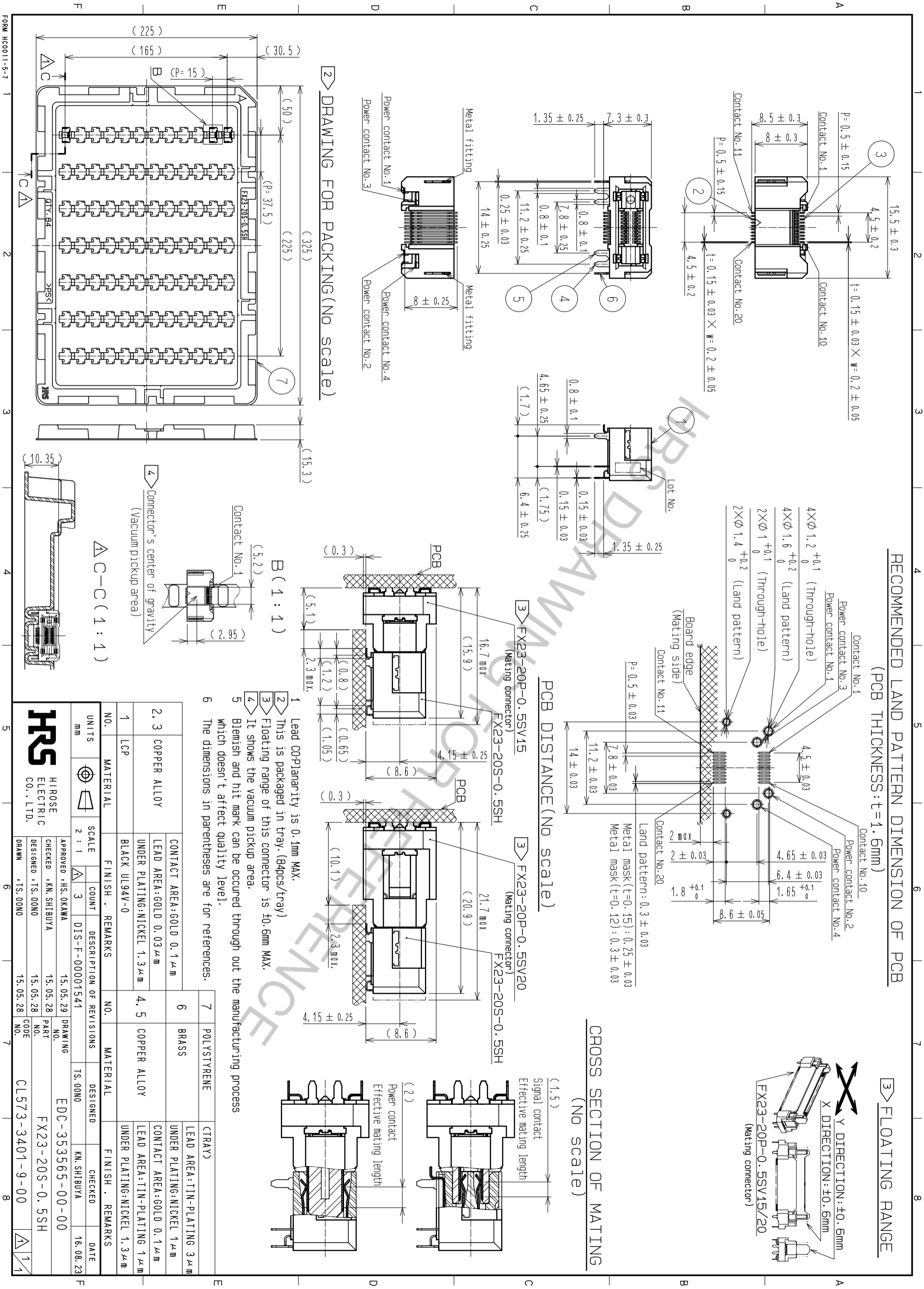
## Contact us

Tel: +86-755-8981 8866 Fax: +86-755-8427 6832

Email & Skype: info@chipsmall.com Web: www.chipsmall.com

Address: A1208, Overseas Decoration Building, #122 Zhenhua RD., Futian, Shenzhen, China





- 1 Lead coplanarity is 0.1mm MAX.
- 2 This is packaged in tray (84pcs/tray)
- 3 Floating range of this connector is  $\pm 0.6\text{mm}$  MAX.
- 4 It shows the vacuum pickup area.
- 5 Blemish and hit mark can be occurred through out the manufacturing process which doesn't affect quality level.
- 6 The dimensions in parentheses are for references.

NO.	MATERIAL	FINISH	REMARKS	NO.	MATERIAL	FINISH	REMARKS
2, 3	COPPER ALLOY	CONTACT AREA: GOLD 0.1 $\mu\text{m}$ LEAD AREA: GOLD 0.03 $\mu\text{m}$ UNDER PLATING: NICKEL 1.3 $\mu\text{m}$		6	BRASS	LEAD AREA: TIN-PLATING 3 $\mu\text{m}$ UNDER PLATING: NICKEL 1 $\mu\text{m}$ CONTACT AREA: GOLD 0.1 $\mu\text{m}$	
1	LCP	BLACK UL94V-0		4, 5	COPPER ALLOY	LEAD AREA: TIN-PLATING 1 $\mu\text{m}$ UNDER PLATING: NICKEL 1.3 $\mu\text{m}$	

UNITS	SCALE	COUNT	DESCRIPTION OF REVISIONS	DESIGNED	CHECKED	DATE
mm	2 : 1	3	DIS-F-00001541	TS: 00N0	KN: SHIBUYA	16.08.23

NO.	MATERIAL	FINISH	REMARKS
7	POLYSTYRENE	(TRAY)	

**HRS**  
HIROSE ELECTRIC CO., LTD.

Approved: HS. OKAWA  
Checked: KN. SHIBUYA  
Designed: TS. 00N0  
Drawing: EDC-353565-00-00  
Part No.: FX23-20S-0.5SH  
Code: CL573-3401-9-00