



Chipsmall Limited consists of a professional team with an average of over 10 year of expertise in the distribution of electronic components. Based in Hongkong, we have already established firm and mutual-benefit business relationships with customers from,Europe,America and south Asia,supplying obsolete and hard-to-find components to meet their specific needs.

With the principle of “Quality Parts,Customers Priority,Honest Operation,and Considerate Service”,our business mainly focus on the distribution of electronic components. Line cards we deal with include Microchip,ALPS,ROHM,Xilinx,Pulse,ON,Everlight and Freescale. Main products comprise IC,Modules,Potentiometer,IC Socket,Relay,Connector.Our parts cover such applications as commercial,industrial, and automotives areas.

We are looking forward to setting up business relationship with you and hope to provide you with the best service and solution. Let us make a better world for our industry!



Contact us

Tel: +86-755-8981 8866 Fax: +86-755-8427 6832

Email & Skype: info@chipsmall.com Web: www.chipsmall.com

Address: A1208, Overseas Decoration Building, #122 Zhenhua RD., Futian, Shenzhen, China





SERIES: VSBU-120-T | **DESCRIPTION:** AC-DC POWER SUPPLY

FEATURES

- up to 120 W continuous power
- industry standard 3" x 5" footprint
- universal input 90~260 Vac
- triple output
- active power correction
- internal EMI filter
- no minimum load required
- input surge current, over voltage, over load, and over current protections
- UL/cUL and TUV safety approvals
- efficiency 80%

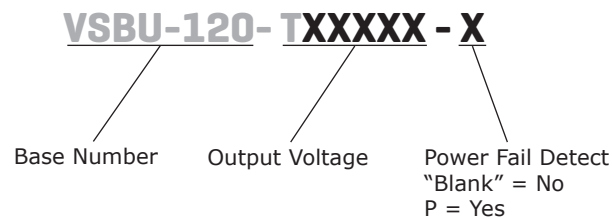


MODEL		output voltage	output current	output power	ripple and noise	efficiency
		(Vdc)	max (A)	max (W)	max (mVp-p)	typ (%)
VSBU-120-T312A	Vo1	3.3	15	120	66	80
	Vo2	12	6	120	120	80
	Vo3	12	0.8	120	120	80
VSBU-120-T312A	Vo1	3.3	15	120	66	80
	Vo2	12	6	120	120	80
	Vo3	12	0.8	120	120	80
VSBU-120-T125A	Vo1	5	15	120	50	80
	Vo2	12	6	120	120	80
	Vo3	-5	0.8	120	-50	80
VSBU-120-T125B	Vo1	5	15	120	50	80
	Vo2	12	6	120	150	80
	Vo3	5	0.8	120	50	80
VSBU-120-T512A	Vo1	5	15	120	50	80
	Vo2	12	6	120	120	80
	Vo3	-12	0.8	120	-120	80
VSBU-120-T512B	Vo1	5	15	120	50	80
	Vo2	12	6	120	120	80
	Vo3	12	0.8	120	120	80
VSBU-120-T515A	Vo1	5	15	120	50	80
	Vo2	15	6	120	150	80
	Vo3	-15	0.8	120	-150	80
VSBU-120-T515B	Vo1	5	15	120	50	80
	Vo2	15	6	120	150	80
	Vo3	15	0.8	120	150	80
VSBU-120-T524A	Vo1	5	15	120	50	80
	Vo2	24	3.5	120	240	80
	Vo3	-24	0.8	120	-240	80
VSBU-120-T524B	Vo1	5	15	120	50	80
	Vo2	24	3.5	120	240	80
	Vo3	24	0.8	120	240	80

continued on page 2

MODEL		output voltage	output current	output power	ripple and noise	efficiency
		(Vdc)	max (A)	max (W)	max (mVp-p)	typ (%)
VSBU-120-T305A	Vo1	5	15	120	50	80
	Vo2	24	3.5	120	240	80
	Vo3	-12	0.8	120	-120	80
VSBU-120-T305B	Vo1	5	15	120	50	80
	Vo2	24	3.5	120	240	80
	Vo3	12	0.8	120	120	80
VSBU-120-T3125A	Vo1	3.3	15	120	66	80
	Vo2	12	6	120	120	80
	Vo3	-5	0.8	120	-50	80
VSBU-120-T3125B	Vo1	3.3	15	120	66	80
	Vo2	12	6	120	120	80
	Vo3	5	0.8	120	50	80
VSBU-120-T510A	Vo1	5	15	120	50	80
	Vo2	10	6	120	100	80
	Vo3	-10	1	120	-100	80
VSBU-120-T510B	Vo1	5	15	120	50	80
	Vo2	10	6	120	100	80
	Vo3	10	1	120	100	80
VSBU-120-T3512A	Vo1	3.3	15	91.5	66	80
	Vo2	5	6	91.5	50	80
	Vo3	-12	1	91.5	-120	80
VSBU-120-T3512B	Vo1	3.3	15	91.5	66	80
	Vo2	5	6	91.5	50	80
	Vo3	12	1	91.5	120	80

PART NUMBER KEY



INPUT

parameter	conditions/description	min	typ	max	units
voltage		90		260	Vac
frequency		47		63	Hz
current	at 115 Vac, full load			1.7	A
	at 230 Vac, full load			1.0	A
inrush current	at 115 Vac, 25°C, full load, cold start		30	37	A
	at 230 Vac, 25°C, full load, cold start		65	75	A
power factor correction	full load at 90 ~ 260 Vac	0.95	0.97	1.0	

OUTPUT

parameter	conditions/description	min	typ	max	units
line regulation	full load		0.5	1	%
load regulation	at 230 Vac		3	5	%
temperature coefficient	all output	-0.04		0.04	%/°C
transient response	full load to half load at 100 Vac			4	ms
start-up	full load at 100 Vac	0.3	1	2	s
hold-up	full load at 110 Vac	16			ms

PROTECTIONS

parameter	conditions/description	min	typ	max	units
over voltage protection		112		132	%
over current protection		110		150	%

SAFETY & COMPLIANCE

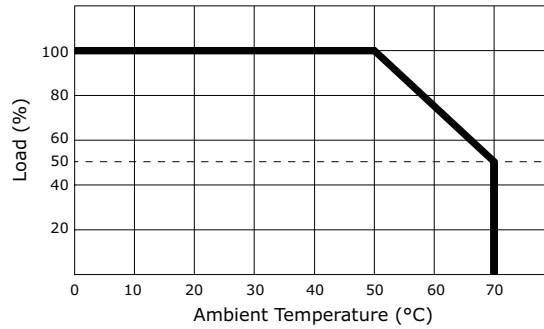
parameter	conditions/description	min	typ	max	units
isolation voltage	primary to secondary	4,242			Vdc
	primary to earth ground	2,121			Vdc
isolation resistance	test voltage of 500 Vdc	50			MΩ
safety approvals	UL 60950-1 2nd edition, EN 60950-1 2nd edition				
EMI/EMC	CISPR 22 class B, FCC part-15 class B				
leakage current	full load at 240 Vac		0.4	0.75	mA
RoHS compliant	yes				
MTBF	MIL-HDSK-217F, 25°C ambient	100,000			hrs

ENVIRONMENTAL

parameter	conditions/description	min	typ	max	units
operating temperature		0		70	°C
storage temperature		-40		85	°C
operating humidity	non-condensing	5		95	%
storage humidity		0		75	%

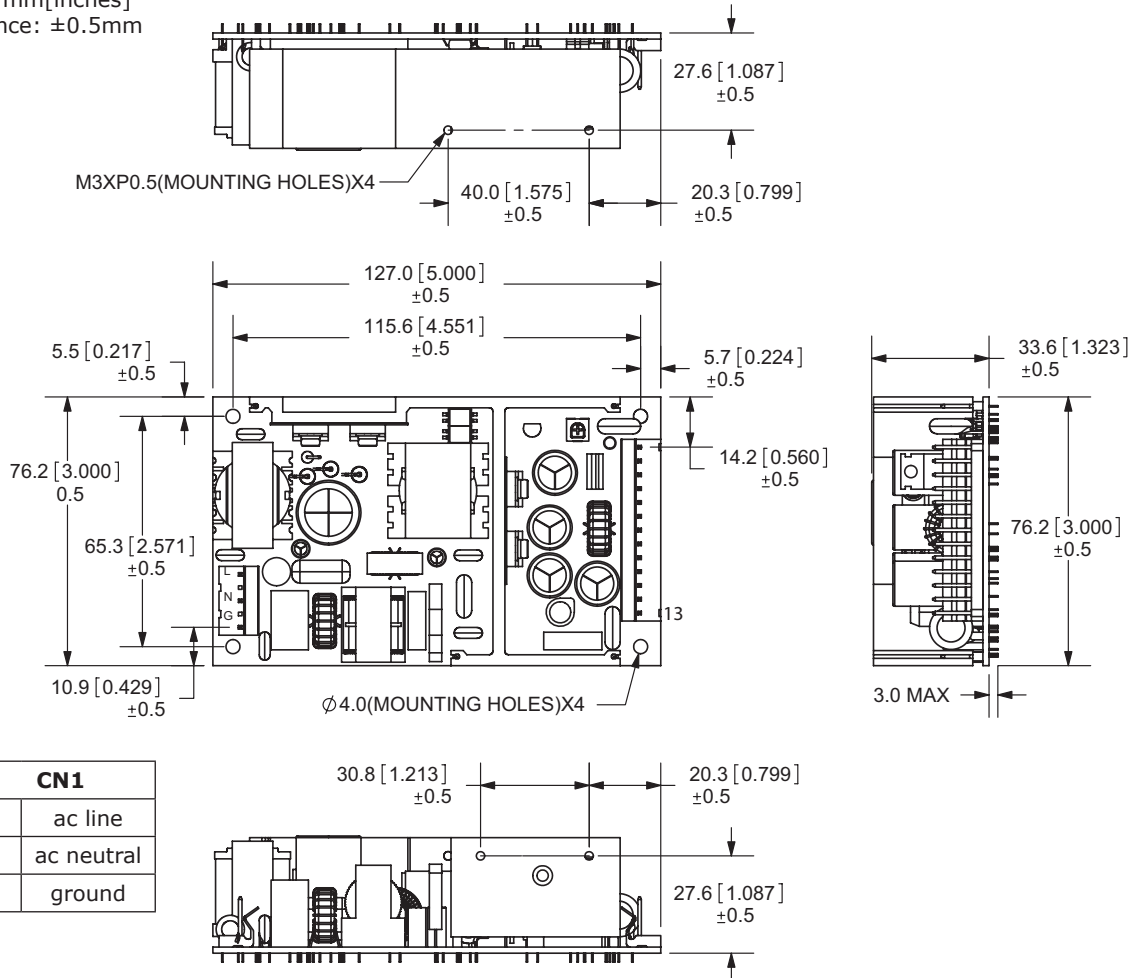
DERATING CURVES

output power vs. ambient temperature



MECHANICAL DRAWING

units: mm[inches]
tolerance: ±0.5mm



CN1	
1	ac line
2	ac neutral
3	ground

CN2	
1	V2
2	V2
3	V1
4	V1
5	V1
6	V1
7	com
8	com
9	com
10	V3
11	com
12	com
13	n/c

note:

1. Input connector mates with Molex housing 09-50-3051 and Molex 2478 or 2578 series crimp terminal.
2. Output connector mates with Molex housing 09-50-3031 and Molex 2478 or 2578 series crimp terminal.

*pin 13 for optional power fail detect

REVISION HISTORY

rev.	description	date
1.0	initial release	11/19/2010
1.01	applied new spec template	02/29/2012
1.02	V-Infinity branding removed	08/14/2012
1.03	updated derating curve	02/07/2013

The revision history provided is for informational purposes only and is believed to be accurate.



CUI INC[®]

Headquarters
20050 SW 112th Ave.
Tualatin, OR 97062
800.275.4899

Fax 503.612.2383
cui.com
techsupport@cui.com

CUI offers a two (2) year limited warranty. Complete warranty information is listed on our website.

CUI reserves the right to make changes to the product at any time without notice. Information provided by CUI is believed to be accurate and reliable. However, no responsibility is assumed by CUI for its use, nor for any infringements of patents or other rights of third parties which may result from its use.

CUI products are not authorized or warranted for use as critical components in equipment that requires an extremely high level of reliability. A critical component is any component of a life support device or system whose failure to perform can be reasonably expected to cause the failure of the life support device or system, or to affect its safety or effectiveness.