



Chipsmall Limited consists of a professional team with an average of over 10 year of expertise in the distribution of electronic components. Based in Hongkong, we have already established firm and mutual-benefit business relationships with customers from,Europe,America and south Asia,supplying obsolete and hard-to-find components to meet their specific needs.

With the principle of “Quality Parts,Customers Priority,Honest Operation,and Considerate Service”,our business mainly focus on the distribution of electronic components. Line cards we deal with include Microchip,ALPS,ROHM,Xilinx,Pulse,ON,Everlight and Freescale. Main products comprise IC,Modules,Potentiometer,IC Socket,Relay,Connector.Our parts cover such applications as commercial,industrial, and automotives areas.

We are looking forward to setting up business relationship with you and hope to provide you with the best service and solution. Let us make a better world for our industry!



Contact us

Tel: +86-755-8981 8866 Fax: +86-755-8427 6832

Email & Skype: info@chipsmall.com Web: www.chipsmall.com

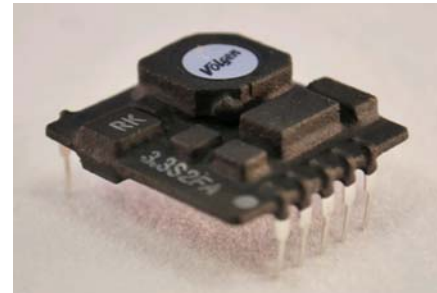
Address: A1208, Overseas Decoration Building, #122 Zhenhua RD., Futian, Shenzhen, China



VSI-mini A Series is an ultra small, TO-3PL packaged type, and non-isolated type step-down DC-DC converter which has achieved ultra high efficiency by the latest synchronous rectification circuit technology. VSI-mini A Series with the size of 20.2×21.5×8.3mm and 10W can be used without heat sink and external capacitor.

<Features>

- Synchronous Rectification Control IC equipped
- Solid Electrolytic Chip Capacitor equipped.
- Convertible with high efficiency 7.5V→3.3V
- High efficiency 92%
- Low standby input current 100μA max.
- Wide operating temperature range -10°C to 70°C
- MTBF 1,000,000 Hrs, All aging
- Output capacitor installed
- Heat Sink not required
- Low profile, Ultra small type
- Remote ON/OFF control
- Wide input voltage range
- Over-current protection
- Non-isolated type
- Adjustable output voltage
- High reliability, long life, high performance



SIP&DIP: External resinous coating
SMD : Without resinous coating

<Model>

Table 1

Model	Rating Input Voltage Vdc	Input Voltage Range Vdc	Rating Output Voltage Vdc	Output Voltage Trim Range Vdc	Output Current A	Ripple/ Noise mVpp(typ)	Efficiency %(typ)	Package
VSI-mini A Series								
VSI-3.3S2R0MA	7.5	4.75-13.6	3.3	1.8-3.3	0-2	30	92	SIP
VSI-3.3S2R0FMA								DIP
VSI-5.0S2R0SMA								SMD

SMD type : Order received product

<Specification>

Table 2

Rating input voltage/range	7.5V / 4.75-13.6V
Rating output voltage	3.3V±5% (When 1pin is open)
Adjustable output range	+1.8-3.3V
Line regulation	0.2% typ. (For the input voltage range of 4.75-13.6V, at rating load.)
Load regulation	0.6% typ. (At rating input voltage, when load changes 0%~100%)
Temperature coefficient	±0.01%/°c typ. (When operating temperature changes between -10°C-50°C)
Ripple & Noise	30mVp-p typ. (Rating input / output, room temperature) (20MHz bandwidth)
Efficiency	92% (Rating input / output, room temperature)
Over-Current Protection	Operates at more than 105% of rating load current, auto recovery type, foldback recovers. Avoid more than 30seconds of short-circuit condition
Over-Voltage Protection	None
No Load Input Current	3mA max. At no load and output on
Standby Input Current	100μA max. At no load and output off (0V)
Remote on/off control	Between 1pin(on/off pin) and 3pin(GND); Open=output ON, short=output off
MTBF	1,000,000Hr min(EIAJ RCR-9102)
Switching frequency	190kHz typ. (20%~100% load current range, When the load is 0%~20% the switching frequency will go down.)
Operating temperature range	-10°C-70°C (Derating to be required from 50°C)
Storage temperature range	-20°C-85°C
Humidity range	20%~95%R.H. (non condensing)
Cooling condition	Natural air cooling
Vibration	5~10Hz All amplitude 10mm (1 hour in each of 3 directional axes), 10~55Hz acceleration 2G (1 hour in each of 3 orthogonal axes)
Shock	Acceleration 20G (3 times in each of 3 directional axes), Shocking Time 11±5ms
Weight	3.8g typ.
Outline	Refer to page 2.

* The above specification is provided with rating value, unless specified conditions is described.

<Outline>
[SIP type]
VSI-3.3S2R0MA

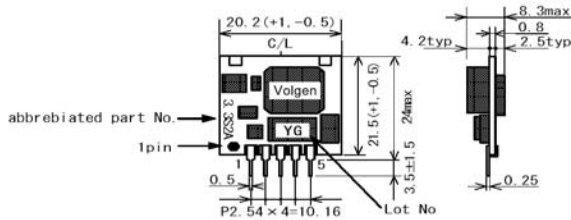


Figure 1

pin	Function
1	ON/OFF CONT
2	+Vin
3	GND
4	+Vout
5	+Vout.ADJ

Dimensions: mm
Tolerance when nothing specified ± 0.5
External resinous coating
Pin substances: Phosphor bronze (Plating: Sn)
Treatment: Soldering dip treatment with Sn-3.0Ag-0.5cu

[DIP type]
VSI-5.0S2R0FMA

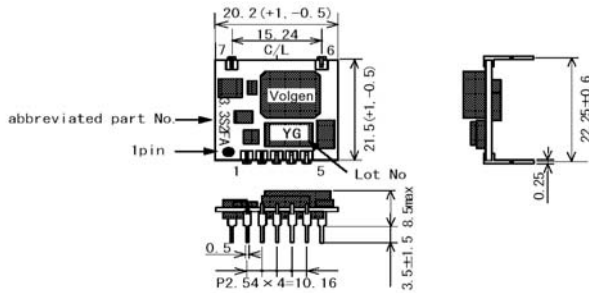


Figure 2

pin	Function
1	ON/OFF CONT
2	+Vin
3	GND
4	+Vout
5	+Vout.ADJ
6	NC
7	NC

Dimensions: mm
Tolerance when nothing specified ± 0.5
External resinous coating
Pin substances: Phosphor bronze (Plating: Sn)
Treatment: Soldering dip treatment with Sn-3.0Ag-0.5cu

[SMD type]
VSI-5.0S2R0SMA
(for order received product)

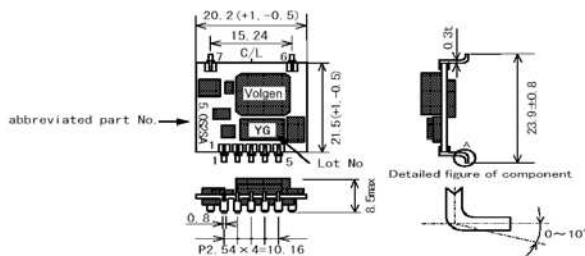
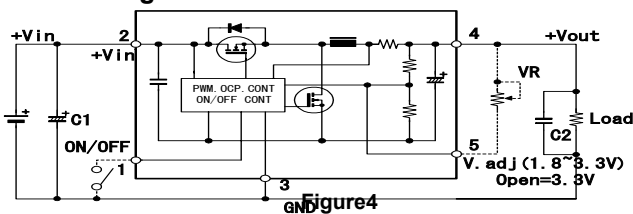


Figure 3

pin	Function
1	ON/OFF CONT
2	+Vin
3	GND
4	+Vout
5	+Vout.ADJ
6	NC
7	NC

Dimensions : mm
Tolerance when nothing specified ± 0.5
Without coating.
(for adsorption mounter air)
Pin substances: Phosphor bronze (Plating: Sn)
Treatment: Soldering dip treatment with Sn-3.0Ag-0.5cu

<Block Diagram>



- Use this model according to a usual three terminal regulator.
- Output Voltage
5pin Open= +5V (rating output voltage)
- C1 : More than 100 μ F (In order to reduce the line impedance)
- C2 : Output capacitor built-in.

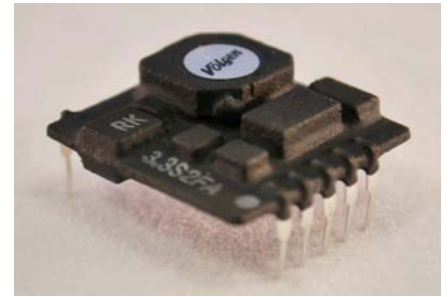
In case that the wiring is long to the load, output noise may be further reduced with the 2.2 μ F~4.7 μ F added.

- Refer to figure 6~8 about :
adjustment output voltage, on/off control.
- Refer to page 6 about : over-current protection, soldering conditions, and cleaning conditions.

VSI-mini A Series is an ultra small, TO-3PL packaged type, and non-isolated type step-down DC-DC converter which has achieved ultra high efficiency by the latest synchronous rectification circuit technology. VSI-mini A Series with the size of 20.2×21.5×8.3mm and 10W can be used without heat sink and external capacitor.

<Features>

- Synchronous Rectification Control IC equipped.
- Solid Electrolytic Chip Capacitor equipped.
- Convert +12V into +5V with high efficiency
- High efficiency 93%
- Low standby input current 100μA max
- Wide operating temperature range -10~+70°C
- MTBF 1,000,000 Hrs, All aging
- Output capacitor installed
- Heat Sink not required
- Ultra low profile, Ultra small type
- Remote on/off control
- Wide input voltage range
- Over current protection Circuit
- Non-Isolated type
- Adjustable output voltage
- High reliability, long life, high performance



SIP&DIP: External resinous coating
SMD : Without resinous coating

<Model>

Table 1

Model	Rating Input Voltage Vdc	Input Voltage Range Vdc	Rating Output Voltage Vdc	Output Voltage Trim Range Vdc	Output Current A	Ripple & Noise mVpp(typ)	Efficiency %(typ)	Package
VSI-mini A Series								
VSI-5.0S2R0MA	12	+6.0~+16.5	+5.0	3.0~5.0	0~2	30	93	SIP
VSI-5.0S2R0FMA								DIP
VSI-5.0S2R0SMA								SMD

SMD type : Order received product

<Specification>

Table 2

Rating input voltage/range	+12V / +6.0~+16.5V
Rating output voltage	5.0V±5% (When 1pin is open)
Adjustable output range	+3.0~+5.0V
Line regulation	0.2% typ. (For the input voltage range of +6~+16.5V, at rating load.)
Load regulation	0.4% typ. (At rating input voltage, when load changes 0%~100%)
Temperature coefficient	±0.01%/°c typ. (When operating temperature changes between -10°C~+50°C)
Ripple & Noise	30mVp-p typ. (Rating input / output, room temperature) (20MHz bandwidth)
Efficiency	93% (Rating input / output, room temperature)
Over-Current Protection	Operates at more than 105% of rating load current, auto recovery type, foldback recovers. Avoid more than 30seconds of short-circuit condition
Over-Voltage Protection	None
No Load Input Current	3mA max. At no load and output o
Standby Input Current	100μA max. At no load and output off (0V)
Remote on/off control	Between 1pin(on/off pin) and 3pin(GND); Open=output ON, short=output off
MTBF	1,000,000Hr min(EIAJ RCR-9102)
Switching frequency	190kHz typ. (20%~100% load current range, When the load is 0%~20% the switching frequency will go down.)
Operating temperature range	-10°C~+70°C (Derating to be required from +50°C)
Storage temperature range	-20°C~+85°C
Humidity range	20%~95%R.H. (non condensing)
Cooling condition	Natural air cooling
Vibration	5~10Hz All amplitude 10mm (1 hour in each of 3 directional axes), 10~55Hz acceleration 2G (1 hour in each of 3 directional axes)
Shock	Acceleration 20G (3 times in each of 3 directional axes), Shocking Time 11±5ms
Weight	3.8g typ.
Outline	Refer to page 2.

* The above specification is provided with rating value, unless specified conditions is described.

<Outline>
[SIP type]
VSI-5.0S2R0MA

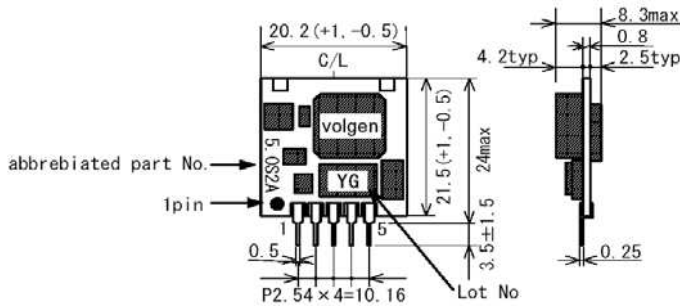


Figure1

pin	Function
1	ON/OFF CONT
2	+Vin
3	GND
4	+Vout
5	+Vout.ADJ

Dimensions: mm
Tolerance when nothing specified ± 0.5
External resinous coating

[DIP type]
VSI-5.0S2R0FMA

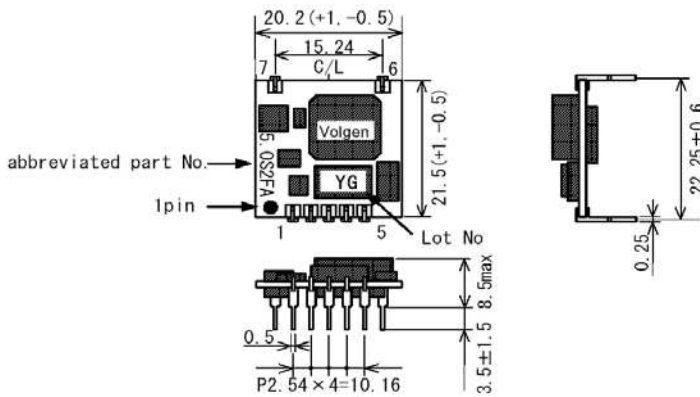


Figure2

pin	Function
1	ON/OFF CONT
2	+Vin
3	GND
4	+Vout
5	+Vout.ADJ
6	NC
7	NC

Dimensions: mm
Tolerance when nothing specified ± 0.5
External resinous coating

[SMD type]
VSI-5.0S2R0SMA
(for order received product)

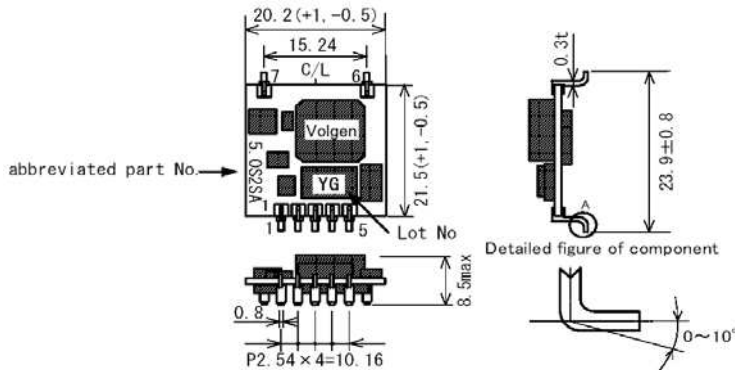


Figure3

pin	Function
1	ON/OFF CONT
2	+Vin
3	GND
4	+Vout
5	+Vout.ADJ
6	NC
7	NC

Dimensions : mm
Tolerance when nothing specified ± 0.5
Without coating.
(for adsorption mounter air)

<Block Diagram>

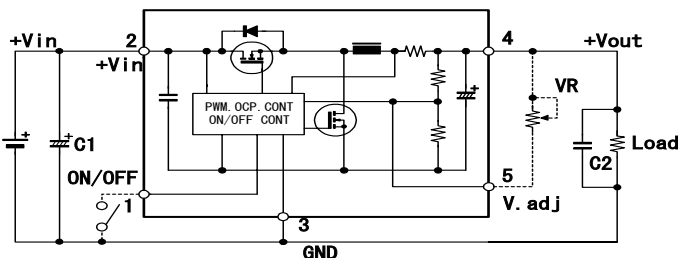


Figure4

- Use this model according to a usual three terminal regulator.
- Output Voltage
5pin Open= +5V (rating output voltage)
- C1 : More than 100 μ F (In order to reduce the line impedance)
- C2 : Output capacitor built-in.
In case that the wiring is long to the load, output noise may be further reduced with the 2.2 μ F~4.7 μ F added.
- Refer to figure 6~8 about :
adjustment output voltage, on/off control.
- Refer to page 6 about :
over-current protection, soldering conditions, and cleaning conditions.