



Chipsmall Limited consists of a professional team with an average of over 10 year of expertise in the distribution of electronic components. Based in Hongkong, we have already established firm and mutual-benefit business relationships with customers from,Europe,America and south Asia,supplying obsolete and hard-to-find components to meet their specific needs.

With the principle of “Quality Parts,Customers Priority,Honest Operation,and Considerate Service”,our business mainly focus on the distribution of electronic components. Line cards we deal with include Microchip,ALPS,ROHM,Xilinx,Pulse,ON,Everlight and Freescale. Main products comprise IC,Modules,Potentiometer,IC Socket,Relay,Connector.Our parts cover such applications as commercial,industrial, and automotives areas.

We are looking forward to setting up business relationship with you and hope to provide you with the best service and solution. Let us make a better world for our industry!



Contact us

Tel: +86-755-8981 8866 Fax: +86-755-8427 6832

Email & Skype: info@chipsmall.com Web: www.chipsmall.com

Address: A1208, Overseas Decoration Building, #122 Zhenhua RD., Futian, Shenzhen, China

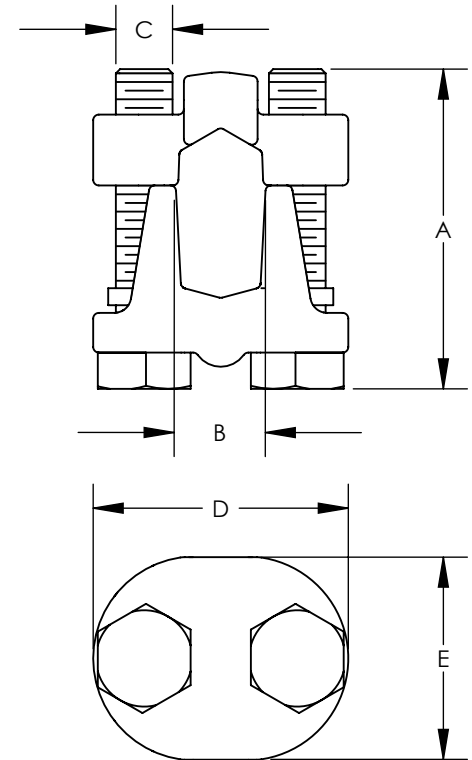


THIS COPY IS PROVIDED ON A RESTRICTED BASIS AND IS NOT TO BE USED IN ANY WAY DETRIMENTAL TO THE INTERESTS OF PANDUIT CORP.

PART NUMBER	A BOLT LENGTH	APPROXIMATE DIMENSIONS			
		B	C	D	E
VTA-0-Q	1-1/4 [32]	13/32 [10.3]	5/16	1-7/16 [37]	15/16 [24]
VTA-1-Q	1-1/2 [38]	1/2 [12.7]	5/16	1-9/16 [40]	1-1/8 [29]
VTA-2-Q	1-3/4 [44]	19/32 [15]	3/8	1-27/32 [47]	1-11/32 [34]
VTA-3-12	2 [51]	3/4 [19]	1/2	2-5/16 [59]	1-5/8 [41]
VTA-4-12	2-1/4 [57]	7/8 [22.2]	1/2	2-7/16 [62]	1-11/16 [43]
VTA-5-6	2-1/2 [64]	1-1/16 [26.9]	1/2	2-11/16 [68]	1-7/8 [48]
VTA-6-6	2-3/4 [70]	1-1/4 [31.7]	5/8	3-1/16 [78]	2-1/4 [57]

NOTES:

1. MATERIAL: TIN PLATED BRONZE CASTING
2. U.L. LISTED WITH COPPER CONDUCTORS



PART NUMBER	MAXIMUM CONDUCTORS					MAXIMUM WIRE DIAMETER
	COPPER		COPPER WELD SOLID	ALUMINUM		
	SOLID	STR.		AWG.	ACSR.	
VTA-0-Q	2/0	1/0	2/0	1/0 STR	1	0.375
VTA-1-Q	3/0	2/0	3/0	---	---	0.419
VTA-2-Q	4/0	4/0	4/0	---	---	0.528
VTA-3-12	---	350 kcmil	---	---	---	0.682
VTA-4-12	---	500 kcmil	---	---	---	0.815
VTA-5-6	---	800 kcmil	---	---	---	1.031
VTA-6-6	---	1000 kcmil	---	---	---	1.153

REV	DATE	BY	CHK	APR	DESCRIPTION	ECN
02	7/15	JHNU	JHNU	RGB	REVISED PART NUMBER: VTA-1-Q WAS VRA-1-Q	N41209BB-C41209
01	5/15	JHNU	JHNU	RGB	REMOVED MADE IN U.S.A. NOTE REVISED TITLE BLOCK CONVERTED DRAWING TO SOLIDWORKS	N41209BB-C41209

TITLE BRONZE TAPS - 2 BOLT CONNECTOR VTA SERIES CUSTOMER DRAWING	
ITEM REVISION NAME	N41209BBAA/02
DATASET FILE NAME	N41209BB-C41209/02.SLDDRW
UNLESS OTHERWISE SPECIFIED, DIMENSIONAL TOLERANCES ARE: IN [mm]	
.X ±	.XXX ±
.XX ± 1/8" [3.2]	ANGLES ±
THIRD ANGLE PROJECTION	
DRAWN BY T SMA DATE 2/97 CHK SCALE NONE	
MATERIAL SEE NOTES	
DRAWING NUMBER C41209	
SHEET 1 OF 1	
SIZE A	