



Chipsmall Limited consists of a professional team with an average of over 10 year of expertise in the distribution of electronic components. Based in Hongkong, we have already established firm and mutual-benefit business relationships with customers from,Europe,America and south Asia,supplying obsolete and hard-to-find components to meet their specific needs.

With the principle of “Quality Parts,Customers Priority,Honest Operation,and Considerate Service”,our business mainly focus on the distribution of electronic components. Line cards we deal with include Microchip,ALPS,ROHM,Xilinx,Pulse,ON,Everlight and Freescale. Main products comprise IC,Modules,Potentiometer,IC Socket,Relay,Connector.Our parts cover such applications as commercial,industrial, and automotives areas.

We are looking forward to setting up business relationship with you and hope to provide you with the best service and solution. Let us make a better world for our industry!



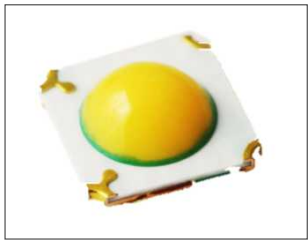
Contact us

Tel: +86-755-8981 8866 Fax: +86-755-8427 6832

Email & Skype: info@chipsmall.com Web: www.chipsmall.com

Address: A1208, Overseas Decoration Building, #122 Zhenhua RD., Futian, Shenzhen, China





L2.5 x W2.5 x H0.9 mm



RoHS compliant

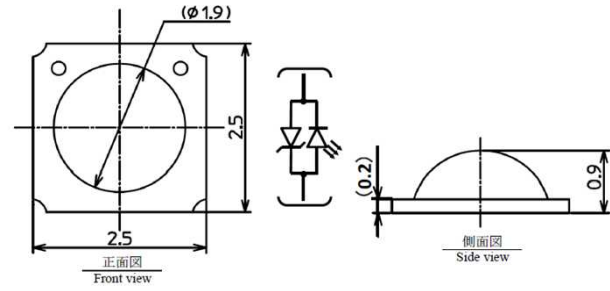


Pb-free soldering compatible

■ Features

- ▶ Middle Power type 0.5 watt
- ▶ Special color LED in which object is shown to more attractive
- ▶ Double potting lens structure.
- ▶ Low thermal resistance

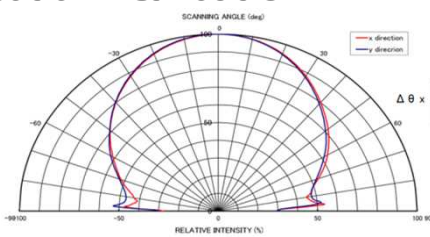
■ Dimension



■ Basic Specifications (Ta=25deg)

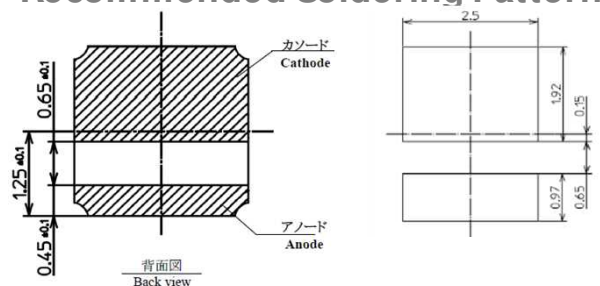
Part Name	Color	CT	Luminous Flux		VF	Forward Current Max
				IF		
VTEW1151ASE- 57Y- TR	White	5700K	85	150mA	3.3V	170mA
VTEW1151ASE- 50Y- TR	White	5000K	85	150mA	3.3V	170mA
VTEW1151ASE- 30Y- TR	White	3000K	85	150mA	3.3V	170mA
GTEW1151ASE- 27Y- TR	Light bulb color	2700K	85	80mA	3.1V	170mA
GTEW1151ASE- 20Y- TR	Candle color	2000K	85	80mA	3.1V	170mA
GTEW1151ASE- 16- TR	Special color (fresh meat)	4600K	-	80mA	3.1V	170mA

■ Spatial Distribution



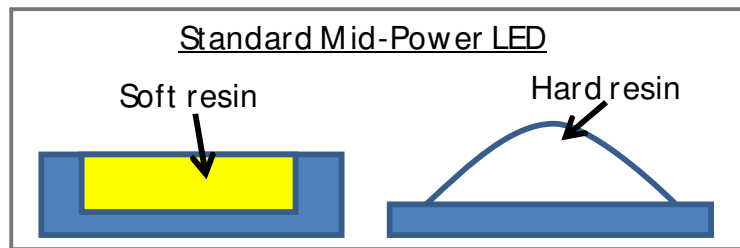
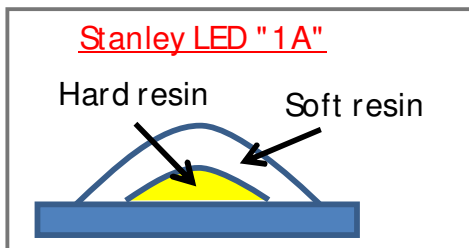
Wide Angle
 $x = 145\text{deg}$,
 $x = 155\text{deg}$.

■ Recommended Soldering Pattern



■ Double potting lens structure

- ▶ It has heat stress resisting and sulfide gas resisting from outside.
- ▶ Color shift does not happen by silicon filing.



*Performance and specification may revised without prior notice, in accordance to meet the engineering development. It is recommended to confirm the most updated specification before designing. Updated Feb 2016



Ultra low Color temperature(2000K)

0.5 watt Class LED

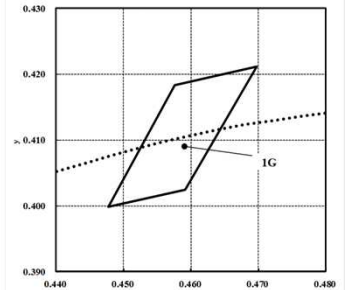
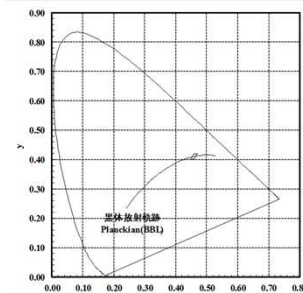
□ TEW1151ASE-□ □ □ -□ □ -TR

■ Low Color Temp. LED

Part Name	Color	CT	Luminous Flux		VF	Forward Current Max
			IF			
GTEW1151ASE- 20Y- TR	Candle color	2000K	85	80mA	3.1V	170mA

➤ Application

- Street lamp like Sodium-vapor lamp,
- Chandelier lamp
- Traditional or majestic festival illuminations
- Lighting in casino, hotel, and restaurant etc.

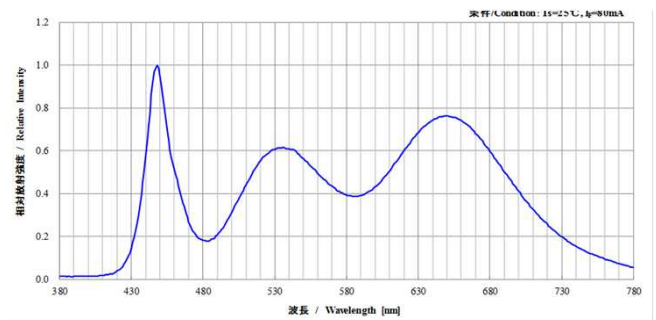


Chichibu Saitama Japan

■ Special Color LED

Part Name	Color	VF	Luminous Flux		Forward Current Max	Usage
			IF			
GTEW1151ASE- 16- TR	Special color(White)	3.1V	85	80mA	170mA	Fresh Meat

Special spectral characteristic which is enhanced freshness of objects.
Decrease a yellow color element and increase a red color element.



➤ Application

- Lighting for Fresh meat and Fresh fish (Frozen refrigeration showcase)
- Lighting for 'Sushi neta case'. (Material case)



Fresh!



Fresh!

*Performance and specification may revised without prior notice, in accordance to meet the engineering development. It is recommended to confirm the most updated specification before designing.

Updated Feb 2016



URL [http:// stanley-components.com/ en](http://stanley-components.com/en)

U.S.A. :+1-949-222-0777

UK :+44-1344-393-536

Germany :+49-6105-930530

France :+33-1-47-81-85-85

Thailand :+66-2-599-1260 EXT187

Singapore :+65-6734-2683

Hong Kong :+852-2730-1738

China Shanghai :+86-21-5298-9431

Shenzhen :+86-755-8606-9122

Taiwan :+886-2-2567-7886

Japan :+81-45-910-2848