



Chipsmall Limited consists of a professional team with an average of over 10 year of expertise in the distribution of electronic components. Based in Hongkong, we have already established firm and mutual-benefit business relationships with customers from,Europe,America and south Asia,supplying obsolete and hard-to-find components to meet their specific needs.

With the principle of “Quality Parts,Customers Priority,Honest Operation,and Considerate Service”,our business mainly focus on the distribution of electronic components. Line cards we deal with include Microchip,ALPS,ROHM,Xilinx,Pulse,ON,Everlight and Freescale. Main products comprise IC,Modules,Potentiometer,IC Socket,Relay,Connector.Our parts cover such applications as commercial,industrial, and automotives areas.

We are looking forward to setting up business relationship with you and hope to provide you with the best service and solution. Let us make a better world for our industry!



Contact us

Tel: +86-755-8981 8866 Fax: +86-755-8427 6832

Email & Skype: info@chipsmall.com Web: www.chipsmall.com

Address: A1208, Overseas Decoration Building, #122 Zhenhua RD., Futian, Shenzhen, China



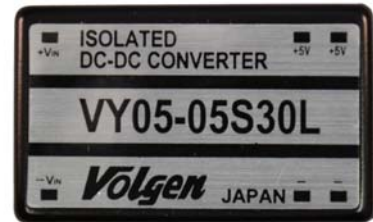


Correspond to Analog Circuits, Ultra Low Noise 8mVp-p Small Size, Long-Life, Isolated Type DC-DC Converter **1.5 Watt VY-L Series**

VY-L series is a long-life, ultra low noise and isolated type DC-DC converter which is most suitable for analog circuits and analog-digital circuits. It has achieved low conducted emission and low radiated emission with the improved TCT circuit. The output noise is ultra low noise of 8mVp-p and has the ability to become the industry leader.

<Features>

- Ultra Low Noise, 8mVp-p typ.
- 24pin DIP IC Size, 5-Side Metallic Shield Case
- Wide Operating Temp. Range -25°C to +71°C
- Possible to start-up from -30°C (No guarantee)
- No Electrolytic Capacitor, No Tantalum Capacitor
- MTBF 1,000,000Hrs , All aging
- High Reliability with the Latest SMD Structure
- Over-Heat Protection
- Over-Current protection
- Isolation Capacitance 100pF max.
- Isolated Type: DC500V
- Most Suitable for Analog and Digital Circuit
- High Reliability, Long-Life, High Performance
- New TCT Circuits (Patented)



<Model, Rating>

Table 1

Model	Rating Input Voltage Vdc	Input Voltage Range Vdc-Vdc	Output Voltage Vdc	Output I Current mA	Line Reg %(max.)	Load Reg %(max.)	Noise mVpp(typ.)	Efficiency %(typ.)
VY-L(1.5W) Series								
VY05-05S30L	5	4.75-6	5	0-300	0.3	0.3	10	60
VY05-09S16L	5	4.75-6	9	0-160	0.3	0.3	10	60
VY05-12S12L	5	4.75-6	12	0-120	0.3	0.3	10	60
VY05-15S10L	5	4.75-6	15	0-100	0.3	0.3	10	60
VY05-05W08L	5	4.75-6	±5	±0-80	0.5	0.5	8	45
VY05-12W06L	5	4.75-6	±12	±0-65	0.5	0.5	8	60
VY05-15W05L	5	4.75-6	±15	±0-53	0.5	0.5	8	60

* This model is compatible with the old VY series to be used for substitutions.

<Specification>

Table 2

Input Voltage/ Range	5V±0.25V (Refer to the derating curve when input is 5.25-6.0V)
Output Voltage	Refer to Table 1
Line Regulation	Refer to Table 1 (For the input voltage range of 5V±5%, at rating load)
Load Regulation	Refer to Table 1 (For the load regulation of 0-100%, at rating input voltage)
Temperature Coefficient	±0.02%/°C typ. (When operating temperature changes between -20°C to +70°C)
Short Term Drift	50mV/ 8H max. (Except initial drift)
Ripple & Noise	(1)VY-SL: 10mVp-p typ. 15mVp-p max. (2)VY-WL: 8mVp-p typ. 15mVp-p max. (20MHz bandwidth)
Efficiency	60% typ. (Rating input/ output, room temperature, refer to Table 1)
Over-Current Protection	Operates at 105% or more rating load current, auto recovery type.
Over-Voltage Protection	None
Over-Heat Protection	Built-in in the regulator part
EMI Line Filter	Built-in LC type line filter
MTBF	1,000,000Hr (EIAJ RCR-9102)
Isolation Voltage	Between primary and secondary DC500V: for 1min., between case and input/ output DC500V: for 1min.
Isolation Resistance	Between primary and secondary DC500V: 10M ohm or more, between case and input/output DC500V: 10M ohm or more.
Isolation Capacitance	Between primary and secondary capacitance: 100pF max.
Operating Temperature Range	-25°C to +71°C (Temperature derating required from +50°C)
Storage Temperature Range	-30°C to +85°C
Humidity Range	95%R. H. max.
Cooling Condition	Natural convection
Vibration	5-10Hz All amplitude 10mm (1hour in each of 3 directional axes), 10-55Hz acceleration 2G (1 hour in each of 3 directional axes)
Shock	Acceleration 20G (3 times in each of 3 directional axes), Shocking time 11±5ms
Weight	14g typ.
Outline	W=20.42 L=32.6 H=10.3 (mm) (For detail dimensions refer to the outline.)

*The above specification is provided with rating value, unless otherwise specified.

<Outline>

VY-SL Series

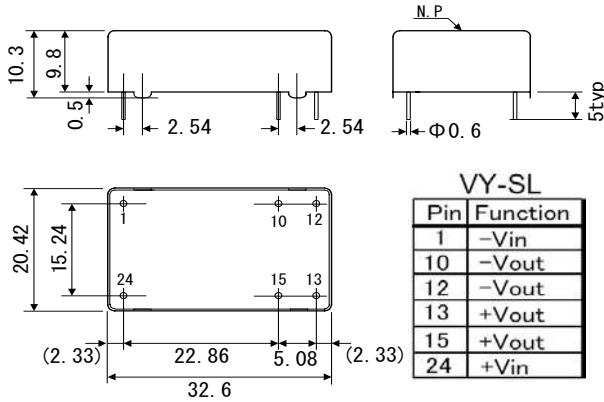


Figure 1

VY-WL Series

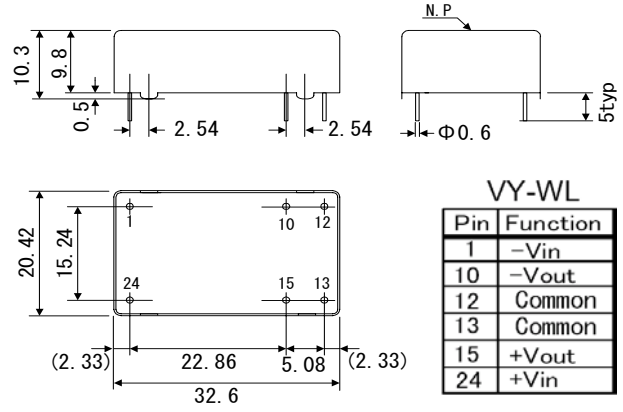


Figure 2

- Dimensions: mm, Weight: 14g typ.
- 5-Side Metallic Shield Case, black plating (with a standoff)
- Pin side is not shielded. It is recommended to set a pattern wider than the converter's bottom area right under the converter.

<Standard Usage>

VY-SL Series (5V, 9V, 12V, 15V)

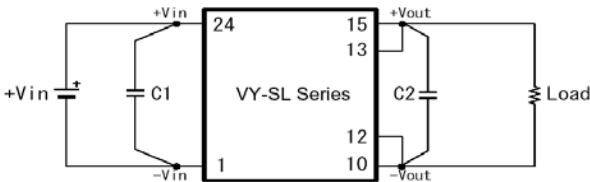


Figure 3

VY-WL Series ($\pm 12V$, $\pm 15V$)

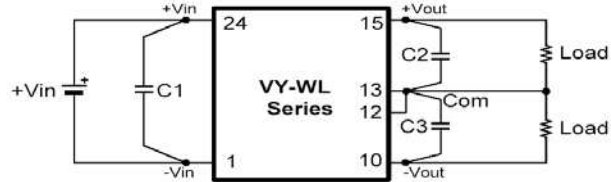


Figure 4

- Recommended capacitor
C1=22 μ F -33 μ F (Electrolytic or multilayer ceramic capacitor)
C2=0.47-10 μ F (Electrolytic or multilayer ceramic capacitor)
- Recommended capacitor
C1=22 μ F -33 μ F (Electrolytic or multilayer ceramic capacitor)
C2, C3=0.47-10 μ F (Electrolytic or multilayer ceramic capacitor)

- Basically, external capacitors are not required, but noise can be lowered by reducing power line impedance and load line impedance.
- High frequency and low impedance capacitors are recommended.
- Noise can also be lowered by designing the pattern with short lead and not to make a loop.

<Block Diagram>

VY-SL Series

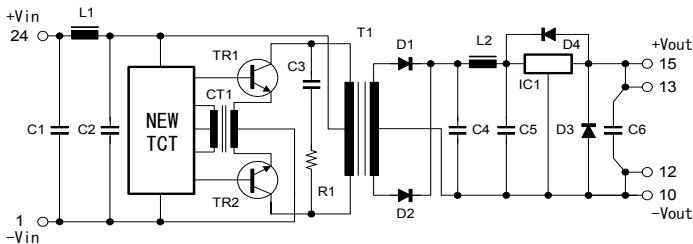


Figure 5

VY-WL Series

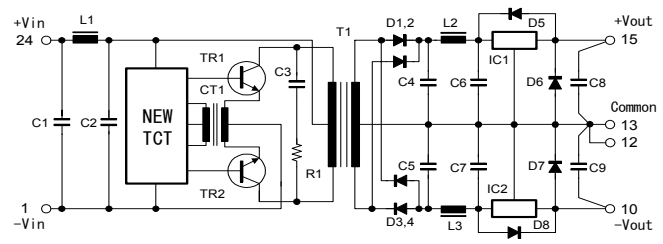


Figure 6