



Chipsmall Limited consists of a professional team with an average of over 10 year of expertise in the distribution of electronic components. Based in Hongkong, we have already established firm and mutual-benefit business relationships with customers from,Europe,America and south Asia,supplying obsolete and hard-to-find components to meet their specific needs.

With the principle of “Quality Parts,Customers Priority,Honest Operation,and Considerate Service”,our business mainly focus on the distribution of electronic components. Line cards we deal with include Microchip,ALPS,ROHM,Xilinx,Pulse,ON,Everlight and Freescale. Main products comprise IC,Modules,Potentiometer,IC Socket,Relay,Connector.Our parts cover such applications as commercial,industrial, and automotives areas.

We are looking forward to setting up business relationship with you and hope to provide you with the best service and solution. Let us make a better world for our industry!



## Contact us

Tel: +86-755-8981 8866 Fax: +86-755-8427 6832

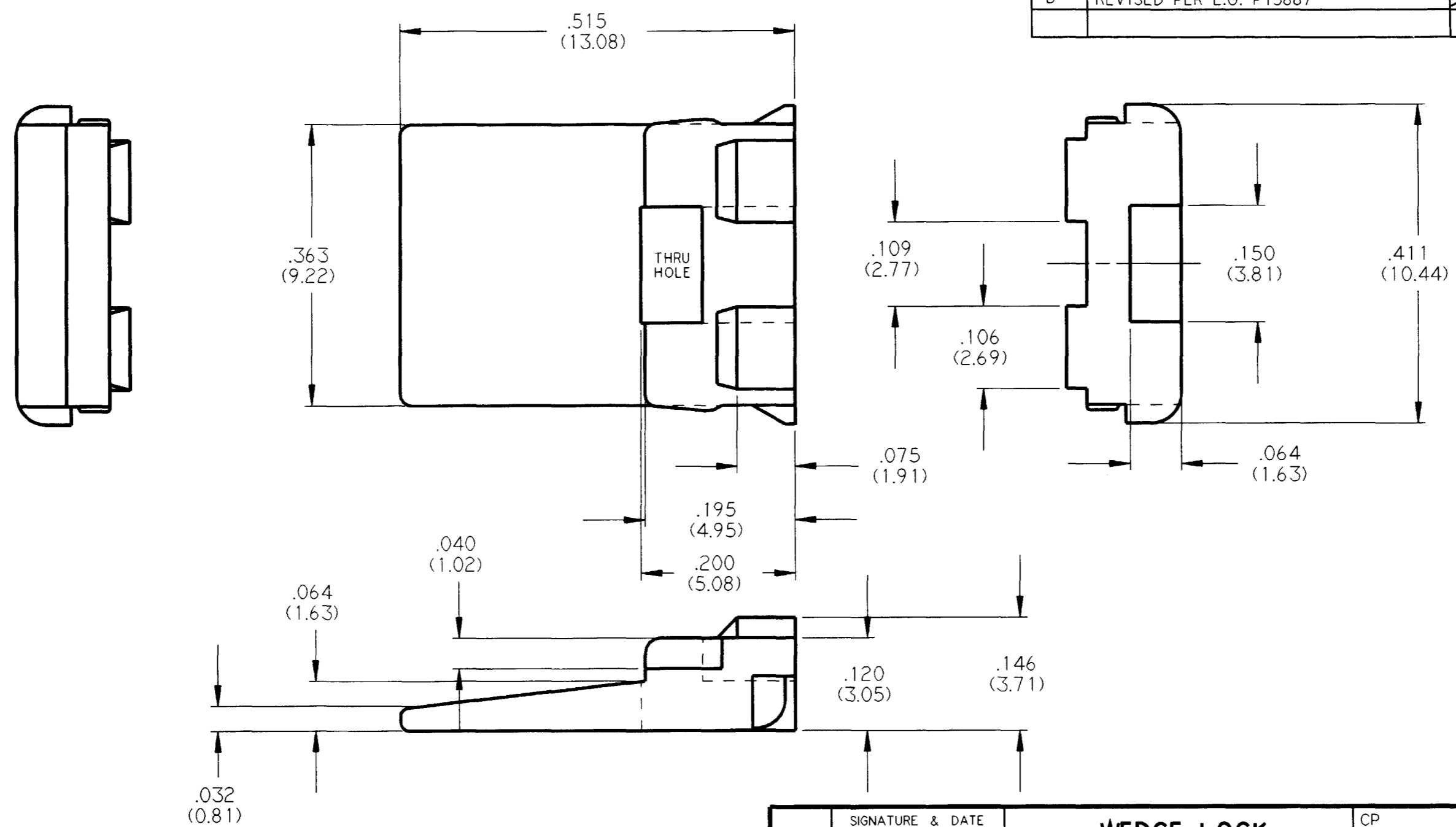
Email & Skype: info@chipsmall.com Web: www.chipsmall.com

Address: A1208, Overseas Decoration Building, #122 Zhenhua RD., Futian, Shenzhen, China



REV  
B      **W2P**

REVISIONS			
SYM	DESCRIPTION	DATE	APPROVED
NC	NEW RELEASE PER E.O. A09191	08/17/89	J.A.
A	REVISED & REDRAWN PER E.O. A13667	08/16/93	J.A.
B	REVISED PER E.O. P15887	2-15-99	RDR



- NOTES:
1. DIMENSIONS ARE IN INCHES.
  2. ALL DIMENSIONS +/- .025 (.63) UNLESS OTHERWISE SPECIFIED.
  3. COLOR OF MATERIAL: GREEN.
  4. MATES WITH DT04-2P-\*\*\*\*.

SIGNATURE & DATE	
DR	JNORRIS 13AUG93
CHK	<i>[Signature]</i> 7-8-99
PE	<i>[Signature]</i> 7-8-99
APPD	R.Road 2-15-99
SCALE	NONE WT

**WEDGE LOCK  
FOR  
2 PIN RECPT.  
HOUSING  
DT SERIES  
ENVELOPE**

CP	MATL CODE
<b>The Deutsch Company</b> DEUTSCH I.P.D. 37140 INDUSTRIAL AVE. HEMET, CALIF. 92343	
<b>B</b>	<b>W2P</b>
DWG SIZE	CODE 11139 SHEET 1 OF 1