



Chipsmall Limited consists of a professional team with an average of over 10 year of expertise in the distribution of electronic components. Based in Hongkong, we have already established firm and mutual-benefit business relationships with customers from,Europe,America and south Asia,supplying obsolete and hard-to-find components to meet their specific needs.

With the principle of “Quality Parts,Customers Priority,Honest Operation,and Considerate Service”,our business mainly focus on the distribution of electronic components. Line cards we deal with include Microchip,ALPS,ROHM,Xilinx,Pulse,ON,Everlight and Freescale. Main products comprise IC,Modules,Potentiometer,IC Socket,Relay,Connector.Our parts cover such applications as commercial,industrial, and automotives areas.

We are looking forward to setting up business relationship with you and hope to provide you with the best service and solution. Let us make a better world for our industry!



## Contact us

Tel: +86-755-8981 8866 Fax: +86-755-8427 6832

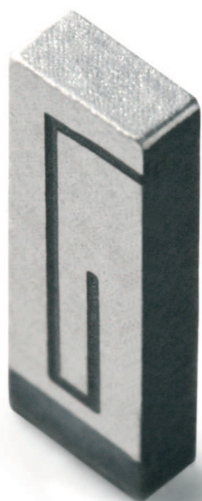
Email & Skype: info@chipsmall.com Web: www.chipsmall.com

Address: A1208, Overseas Decoration Building, #122 Zhenhua RD., Futian, Shenzhen, China



# Dualband WLAN Ceramic Chip Antenna

Ground cleared under antenna 11.60 x 6.00 mm. Pulse Part Number: W3006



## Features

- Omnidirectional radiation
- Low profile
- Compact size WxLxH (10.0 x 3.2 x 1.5 mm)
- Low weight (240 mg)
- Fully SMD compatible
- Lead free soldering compatible
- Tape and reel packing
- RoHS Compliant Product
- Single feed point

## Applications

- IEEE 802.11a/b/g
- 5 GHz WLAN
- 2.4 GHz WLAN
- 2.4 GHz ISM Band Systems
- ZigBee IEEE 802.15.4

## Electrical specifications @ +25 °C

*Note: Electrical characteristics depend on test board (GP) size and antenna positioning on GP and Ground Clearance area size.*

## Dualband WLAN

Typical performance (testboard size 80 x 37 mm, PWB ground clearance area 11.60 x 6.00 mm)

1.5nH shunt inductor used for impedance matching.

Frequency Range [MHz]	Max Gain [dBi]	Efficiency [%] / [dB]	Return loss min. [dB]	Impedance [Ω]	Operating Temperature [°C]
2400–2483.5	3.2 (peak) 2.7 (band edges)	70 / -1.55 (peak) 65 / -1.85 (band edges)	-8	50	-40 to +85
5150–5850	4.2 (peak) 3.0 (band edges)	80 / -0.95 (peak) 70 / -1.55 (band edges)	-10	50	-40 to +85

## Pulse Finland Oy

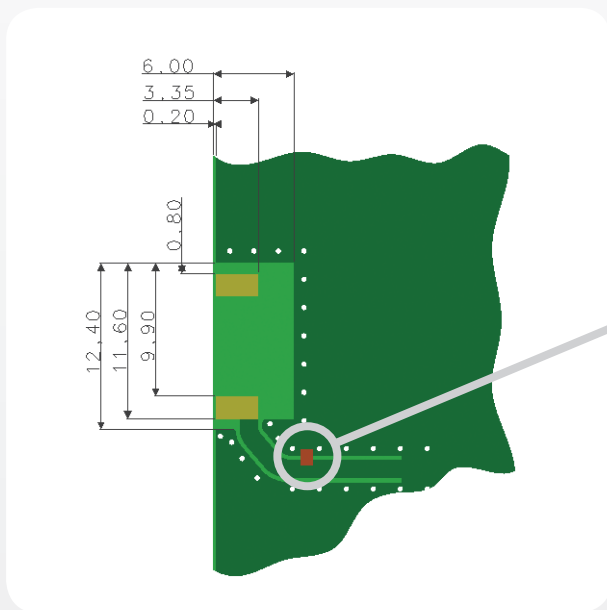
Takatie 6  
90440 Kempele, Finland  
Tel: +358 207 935 500  
Fax: +358 207 935 501  
[www.pulseeng.com/antennas](http://www.pulseeng.com/antennas)



# Dualband WLAN Ceramic Chip Antenna

Ground cleared under antenna 11.60 x 6.00 mm. Pulse Part Number: W3006

**Recommended test board layout for electrical characteristic measurement,  
test board outline size 80 x 37mm**



Shunt matching inductor,  
1.5nH with presented setup.  
Exact inductor value depends  
on specific application.

Feed line should be designed to match 50  $\Omega$  characteristic impedance, depending on PWB material and thickness.

## Pulse Finland Oy

Takatie 6  
90440 Kempele, Finland  
Tel: +358 207 935 500  
Fax: +358 207 935 501

[www.pulseeng.com/antennas](http://www.pulseeng.com/antennas)

# Dualband WLAN Ceramic Chip Antenna

Ground cleared under antenna 11.60 x 6.00 mm. Pulse Part Number: W3006

## Typical Electrical Characteristics (T=25 °C)

2,4 GHz Typical Return Loss S11/ impedance, measured on the test board

### Dualband WLAN

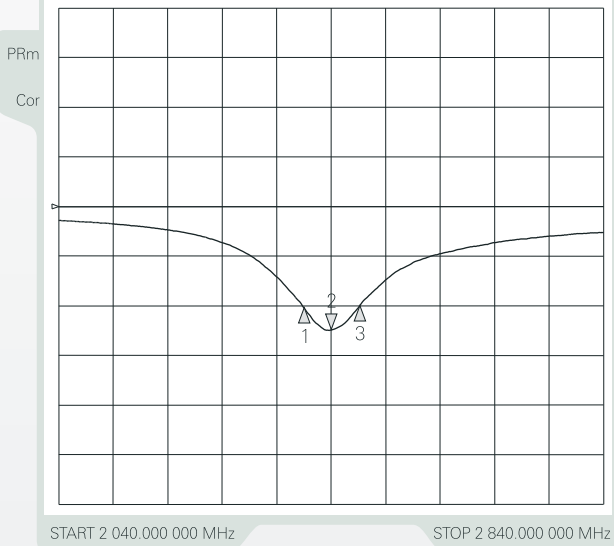
6 Nov 2006 15:08:00

CH1Markers

- 1. -10.222 dB 2.40000 GHz
- 2. -12.440 dB 2.440.000 MHz
- 3. -9.9001 dB 2.48300 GHz

CH1 S11 LOG

5 dB/REF 0 dB

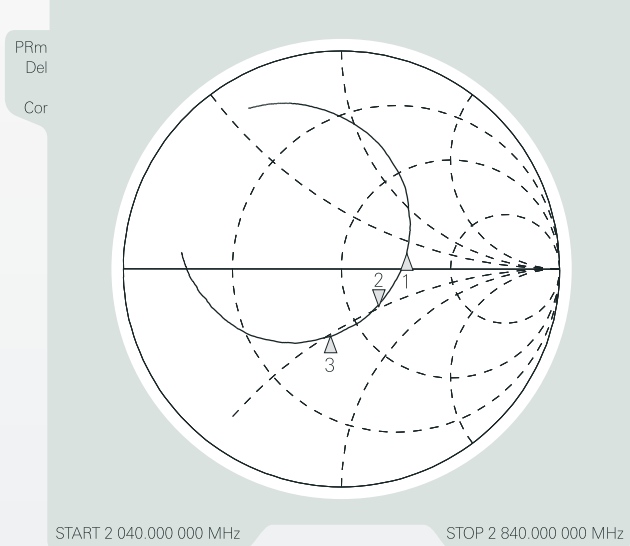


### Dualband WLAN

6 Nov 2006 15:10:39

- 1. 91.352 Ω 14.160 Ω 2.40000 GHz
- 2. 66.293 Ω -22.988 Ω 2.8374 pF 2440.000 MHz
- 3. 37.697 Ω -25.881 Ω 2.48300 GHz

CH1 S11 1 U FS



5GHz Typical Return Loss S11/ impedance, measured on the test board

### Dualband WLAN

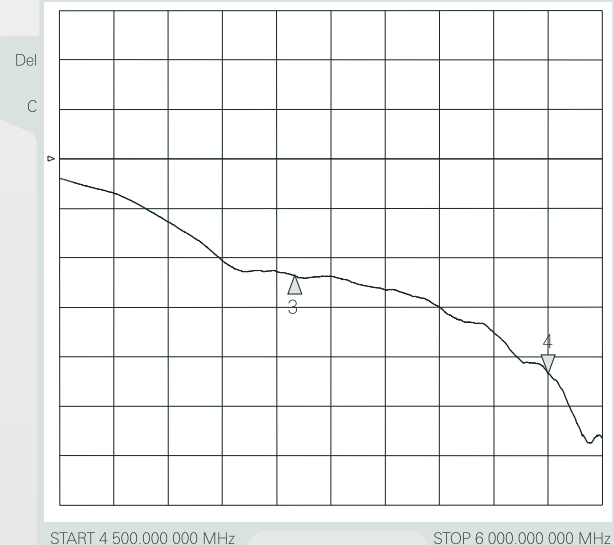
6 Nov 2006 14:47:27

CH1Markers

- 3. -11.876 dB 5.15000 GHz
- 4. 21.610 dB 5.850.000 MHz

CH1 S11 LOG

5 dB/REF 0 dB

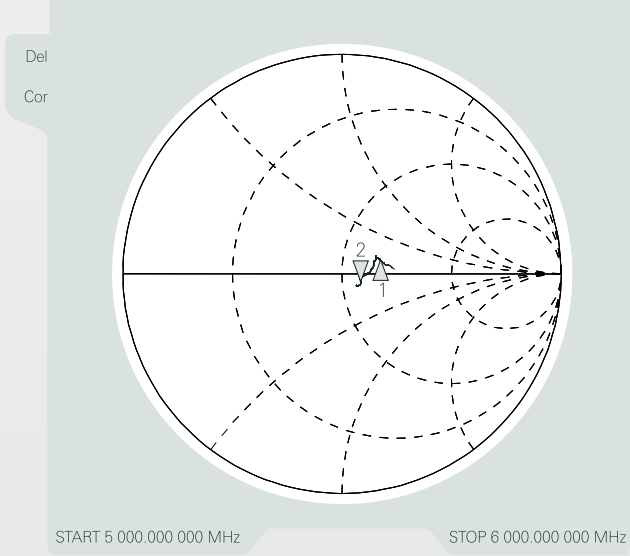


### Dualband WLAN

7 Nov 2006 10:55:26

- 1. 70.812 Ω 8.9375 Ω 5.15000 GHz
- 2. 59.072 Ω -3.6074 Ω 7.5417 pF 5.850.000 MHz

CH1 S11 1 U FS



**Pulse Finland Oy**

Takatie 6  
90440 Kempele, Finland  
Tel: +358 207 935 500  
Fax: +358 207 935 501  
[www.pulseeng.com/antennas](http://www.pulseeng.com/antennas)



# Dualband WLAN Ceramic Chip Antenna

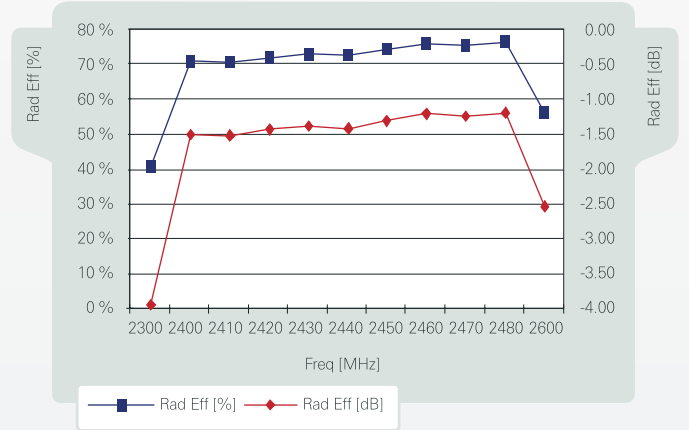
Ground cleared under antenna 11.60 x 6.00 mm. Pulse Part Number: W3006

## 2,4 GHz free space efficiency and maximum gain

DualBand WiFi 2.4G 10 x 3.2 x 1.5 mm

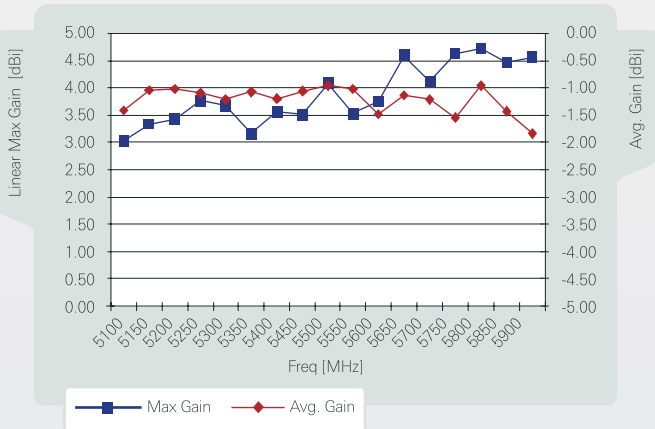


DualBand WiFi 2.4G 10 x 3.2 x 1.5 mm

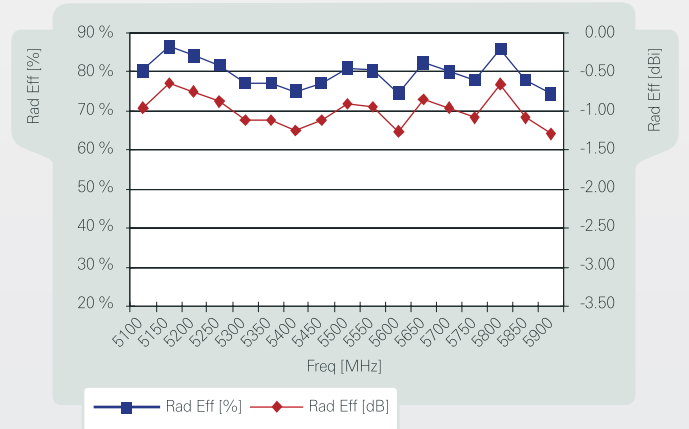


## 5 GHz free space efficiency and maximum gain

DualBand WiFi 5G 10 x 3.2 x 1.5 mm



DualBand WiFi 5G 10 x 3.2 x 1.5 mm



Pulse Finland Oy

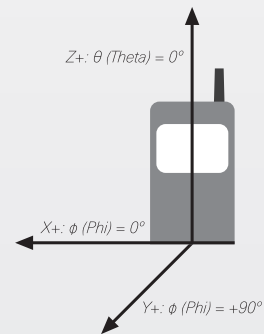
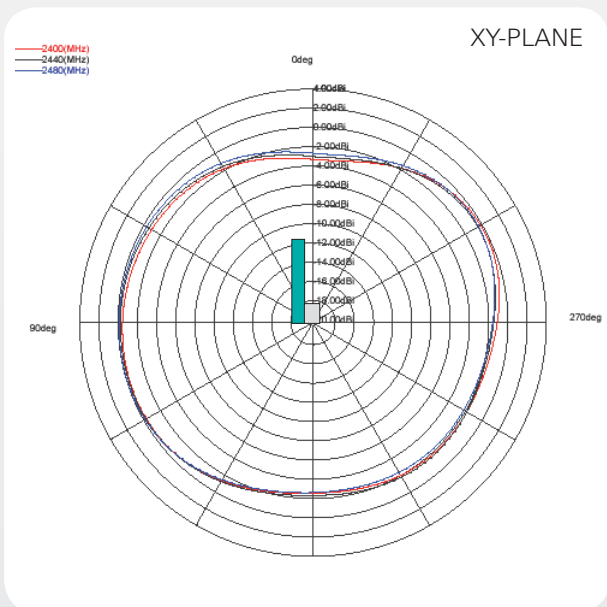
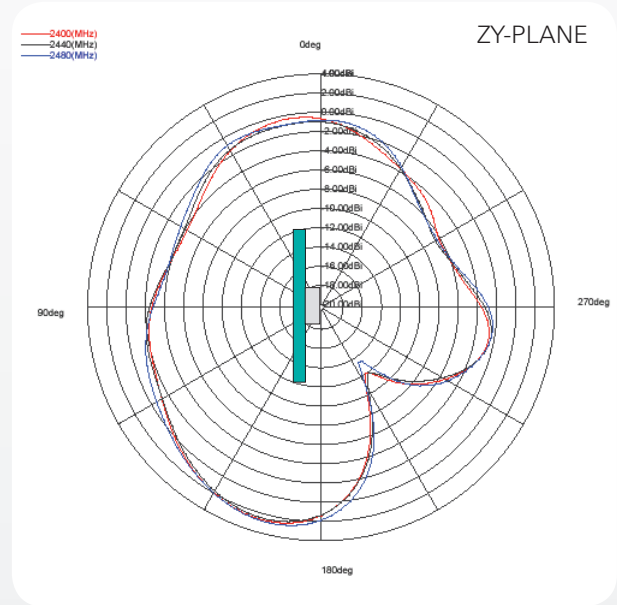
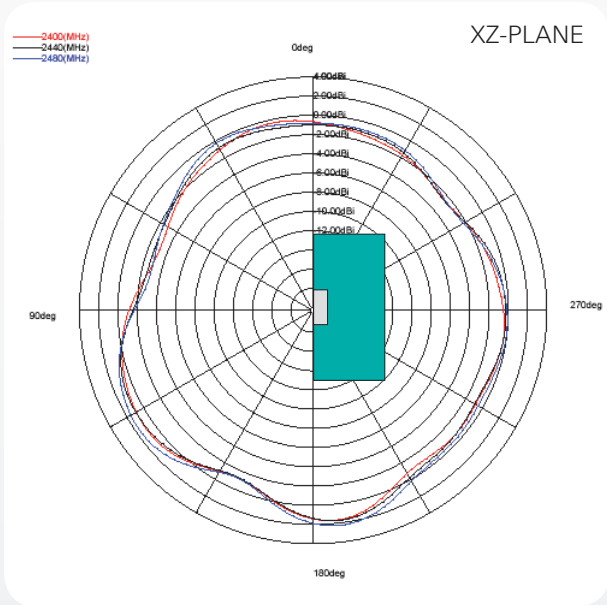
Takatie 6  
90440 Kempele, Finland  
Tel: +358 207 935 500  
Fax: +358 207 935 501  
[www.pulseeng.com/antennas](http://www.pulseeng.com/antennas)



# Dualband WLAN Ceramic Chip Antenna

Ground cleared under antenna 11.60 x 6.00 mm. Pulse Part Number: W3006

## 2,4 GHz Typical Free space Radiation Patterns



Pulse Finland Oy

Takatie 6  
90440 Kempele, Finland

Tel: +358 207 935 500

Fax: +358 207 935 501

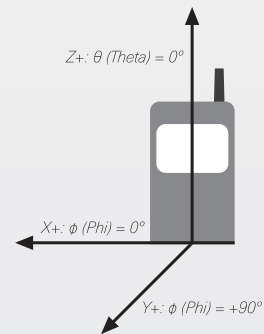
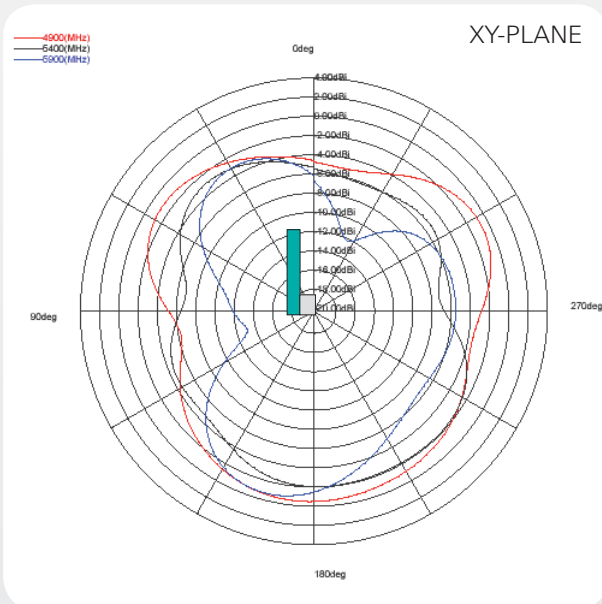
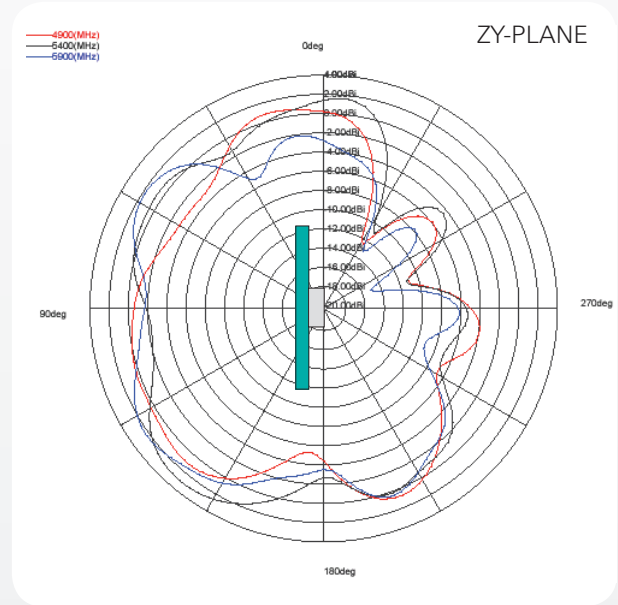
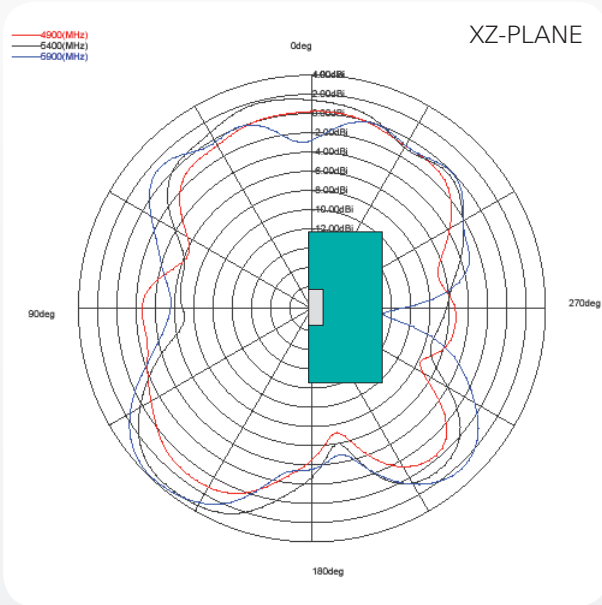
[www.pulseeng.com/antennas](http://www.pulseeng.com/antennas)



# Dualband WLAN Ceramic Chip Antenna

Ground cleared under antenna 11.60 x 6.00 mm. Pulse Part Number: W3006

## 5 GHz Typical Free space Radiation Patterns



Pulse Finland Oy

Takatie 6  
90440 Kempele, Finland

Tel: +358 207 935 500

Fax: +358 207 935 501

[www.pulseeng.com/antennas](http://www.pulseeng.com/antennas)

