



Chipsmall Limited consists of a professional team with an average of over 10 year of expertise in the distribution of electronic components. Based in Hongkong, we have already established firm and mutual-benefit business relationships with customers from,Europe,America and south Asia,supplying obsolete and hard-to-find components to meet their specific needs.

With the principle of "Quality Parts,Customers Priority,Honest Operation,and Considerate Service",our business mainly focus on the distribution of electronic components. Line cards we deal with include Microchip,ALPS,ROHM,Xilinx,Pulse,ON,Everlight and Freescale. Main products comprise IC,Modules,Potentiometer,IC Socket,Relay,Connector.Our parts cover such applications as commercial,industrial, and automotives areas.

We are looking forward to setting up business relationship with you and hope to provide you with the best service and solution. Let us make a better world for our industry!



Contact us

Tel: +86-755-8981 8866 Fax: +86-755-8427 6832

Email & Skype: info@chipsmall.com Web: www.chipsmall.com

Address: A1208, Overseas Decoration Building, #122 Zhenhua RD., Futian, Shenzhen, China



1.9 GHz RX Diversity Ceramic Antenna

Ground cleared under antenna, clearance area 10.60 x 6.25 mm

Pulse Part Number: W3029



Features

- Omnidirectional radiation
- Low profile
- Compact size W x L x H (10 x 3.2 x 2 mm)
- Low weight (310 mg)
- Lead free materials
- Fully SMD compatible
- Lead free soldering compatible
- Tape and reel packing
- RoHS Compliant Product

Applications

- GSM 1900 MHz band (PCS)
- 1.93-1.99 GHz

Electrical specifications @ +25 °C

Note: Electrical characteristics depend on test board (GP) size and antenna positioning on GP and Ground Clearance area size.

RX Diversity 1930-1990 MHz

Typical performance test board size 80 x 37 mm, PWB ground clearance area 10.60 x 6.25 mm)

Frequency Range [MHz]	Linear Max Gain [dBi]	Efficiency [%] / [dB]	Return Loss min. [dB]	Impedance [Ω]	Operating Temperature [°C]
1930 – 1990	2 (peak) 1.3 (band edges)	80 / -1 (peak) 70 / -1.55 (band edges)	-10	50	-40 to +85

Pulse Antennas

Takatie 6
90440 Kempele, Finland
Tel: +358 207 935 500
Fax: +358 207 935 501
www.pulseeng.com/antennas



1.9 GHz RX Diversity Ceramic Antenna

Ground cleared under antenna, clearance area 10.60 x 6.25 mm

Typical Electrical Characteristics (T=25 °C)

Measured on the 80 x 37 mm test board

Typical Return Loss S11/impedance

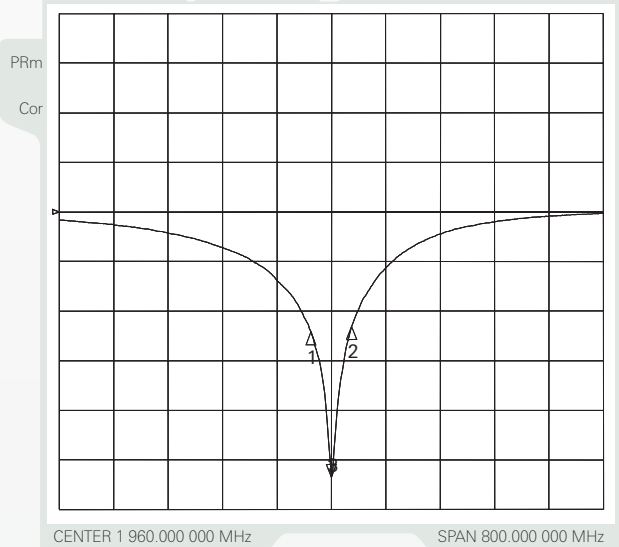
GSM 1900 RX Diversity

14 Sep 2006 15:59:03

CH1Markers

- 1. -16.913 dB 1.93000 GHz
- 2. -16.166 dB 1.99000 GHz
- 3. -37.462 dB 1.960.000 000 MHz

CH1 S11 LOG 7 dB/REF 0 dB



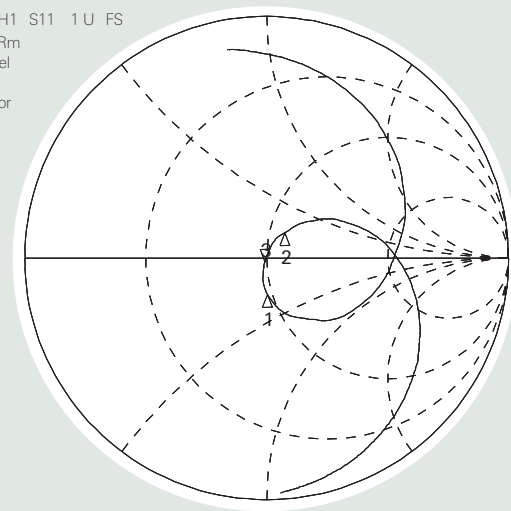
GSM 1900 RX Diversity

14 Sep 2006 16:00:22

CH1Markers

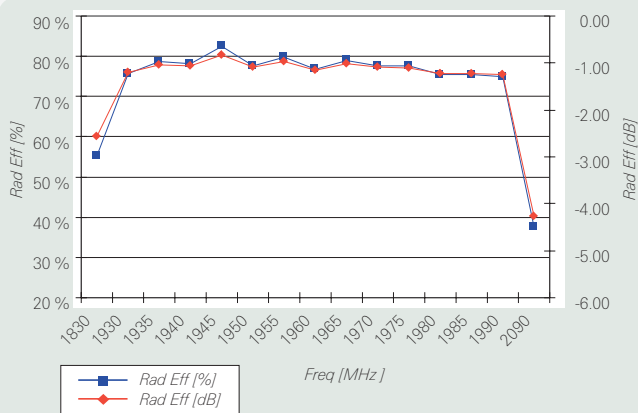
- 1. 48.045 Ω -14.959 Ω 1.93000 Ghz
- 2. 56.842 Ω 12.104 Ω 1.99000 GHz
- 3. 49.209 Ω -1.6836 Ω 48.231 pF 1.960.000 000 MHz

CH1 S11 1 U FS
PRm
Del
Cor

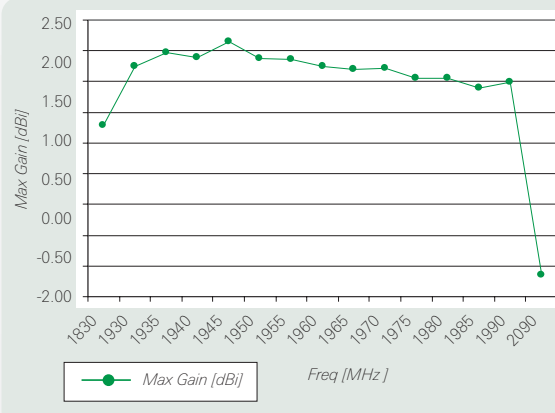


Free space efficiency and maximum gain

RX Diversity 1930–1990 Mhz



RX Diversity 1930–1990 Mhz



Pulse Antennas

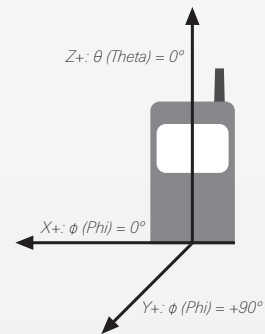
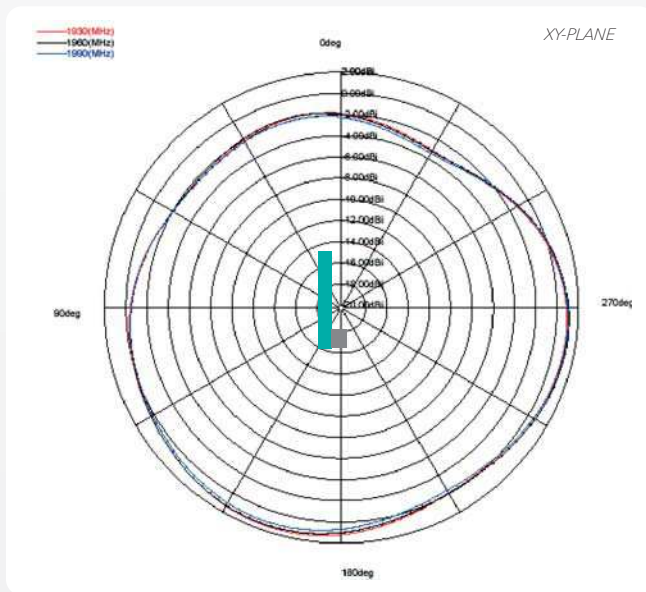
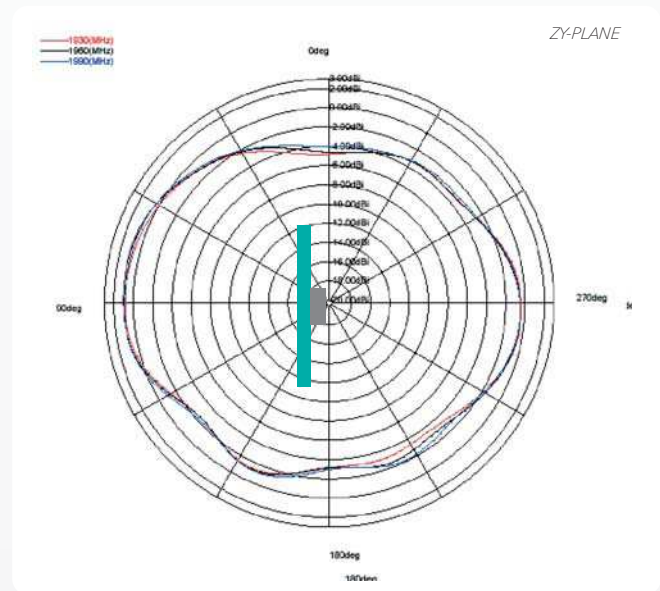
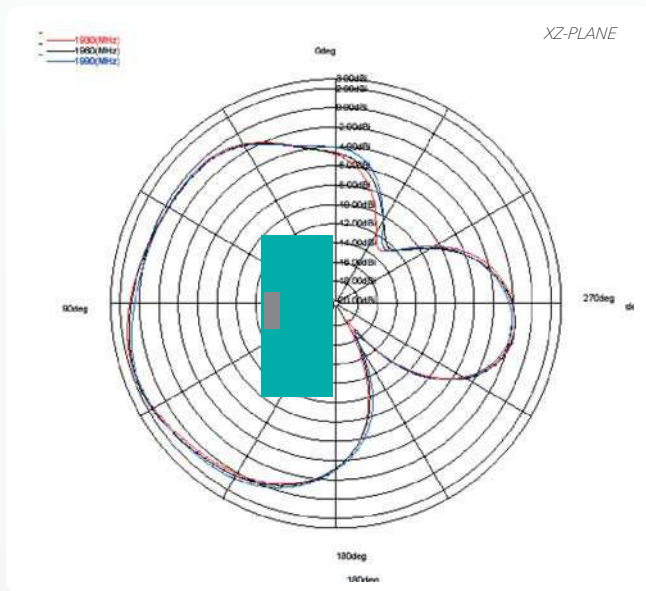
Takatie 6
90440 Kempele, Finland
Tel: +358 207 935 500
Fax: +358 207 935 501
www.pulseeng.com/antennas



1.9 GHz RX Diversity Ceramic Antenna

Ground cleared under antenna, clearance area 10.60 x 6.25 mm

Typical Free Space Radiation Patterns



Pulse Antennas

Takatie 6
90440 Kempele, Finland
Tel: +358 207 935 500
Fax: +358 207 935 501
www.pulseeng.com/antennas

