



Chipsmall Limited consists of a professional team with an average of over 10 year of expertise in the distribution of electronic components. Based in Hongkong, we have already established firm and mutual-benefit business relationships with customers from,Europe,America and south Asia,supplying obsolete and hard-to-find components to meet their specific needs.

With the principle of “Quality Parts,Customers Priority,Honest Operation,and Considerate Service”,our business mainly focus on the distribution of electronic components. Line cards we deal with include Microchip,ALPS,ROHM,Xilinx,Pulse,ON,Everlight and Freescale. Main products comprise IC,Modules,Potentiometer,IC Socket,Relay,Connector.Our parts cover such applications as commercial,industrial, and automotives areas.

We are looking forward to setting up business relationship with you and hope to provide you with the best service and solution. Let us make a better world for our industry!



Contact us

Tel: +86-755-8981 8866 Fax: +86-755-8427 6832

Email & Skype: info@chipsmall.com Web: www.chipsmall.com

Address: A1208, Overseas Decoration Building, #122 Zhenhua RD., Futian, Shenzhen, China



ISM 900MHz Helical SMD-Antenna

Ground cleared under antenna, clearance area 6.00 x 11.00 mm. Pulse Part Number: W3112A



Features

- Vertical mount on board
- Compact size WxLxH (2.5 x 8 x 8 mm)
- Low weight (390 mg)
- Lead Free materials
- Fully SMD compatible
 - Glue needed between antenna and PWB
- Lead free soldering compatible
- Tape and reel packing
- RoHS Compliant Product

Applications

- 900MHz ISM Band Systems
- Engineering samples available*

Electrical specifications @ +25 °C

Note: Electrical characteristics depend on test board (GP) size and antenna positioning on GP and Ground Clearance area size.

ISM 900MHz

Typical performance (testboard size 100 x 40 mm, PWB ground clearance area 6.00 x 11.00 mm)

Frequency Range [MHz]	Max Gain [dBi]	Efficiency [%] / [dB]	Return loss min. [dB]	Impedance [Ω]	Operating Temperature [°C]
902 – 928	0.9 (peak) -0.3 (band edges)	67 / -1.7 (peak) 50 / -3 (band edges)	-10	50	-40 to +85

Pulse Finland Oy

Takatie 6
90440 Kempele, Finland
Tel: +358 207 935 500
Fax: +358 207 935 501
www.pulseeng.com/antennas

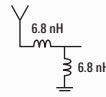


ISM 900MHz Helical SMD-Antenna

Ground cleared under antenna, clearance area 6.00 x 11.00 mm. Pulse Part Number: W3112A

Typical Electrical Characteristics (T=25 °C)

Typical Return Loss S11/ impedance, measured on the 100 x 40 mm test board with matching circuit



Dualband WLAN

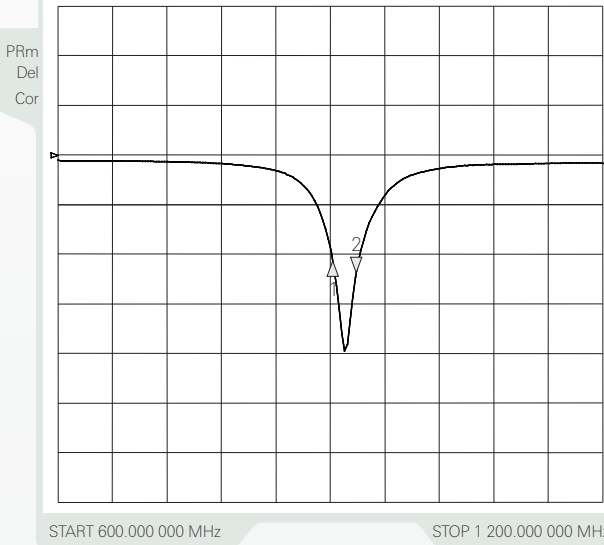
3 Aug 2006 12:15:23

CH1Markers

- 1. -10.616 dB 902.000 MHz
- 2. -11.740 dB 928.000 000 MHz

CH1 S11 LOG

5 dB/REF 0 dB

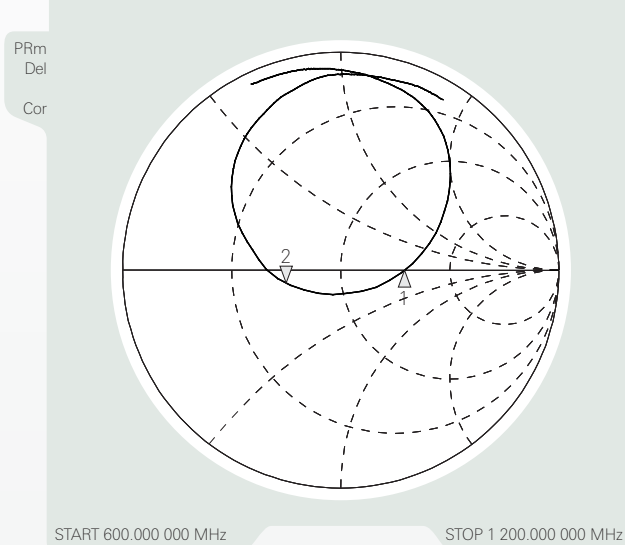


Dualband WLAN

3 Aug 2006 12:22:57

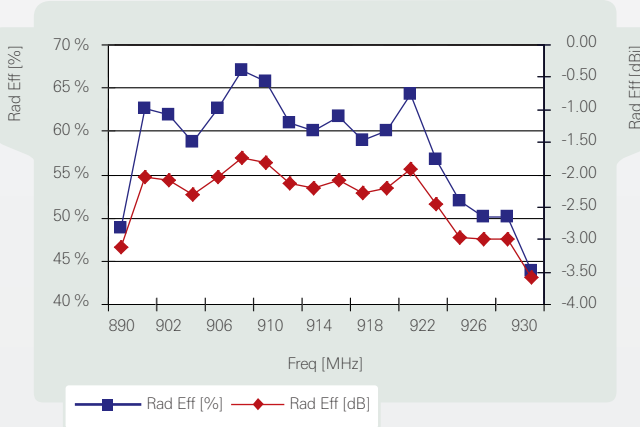
- 1. 92.414 Ω 0.4141 Ω 902.000 MHz
- 2. 29.924 Ω -3.8193 Ω 44.904 pF
- 928.000 000 MHz

CH1 S11 1 U FS

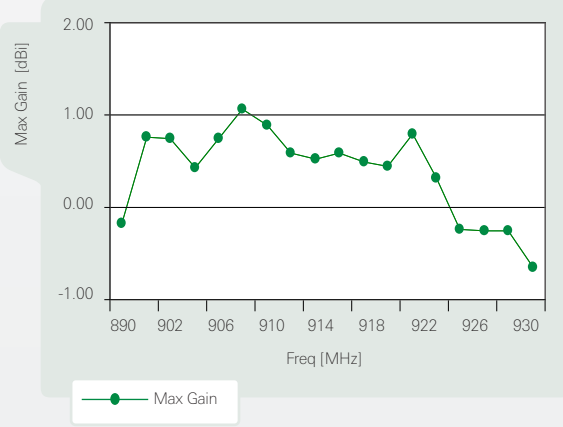


Free space efficiency and maximum gain, PWB ground clearance area 6.00 x 11.00 mm

ISM 900 MHz Ver Helical Antenna



ISM 900 MHz Ver Helical Antenna



Pulse Finland Oy

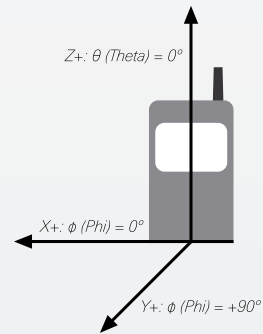
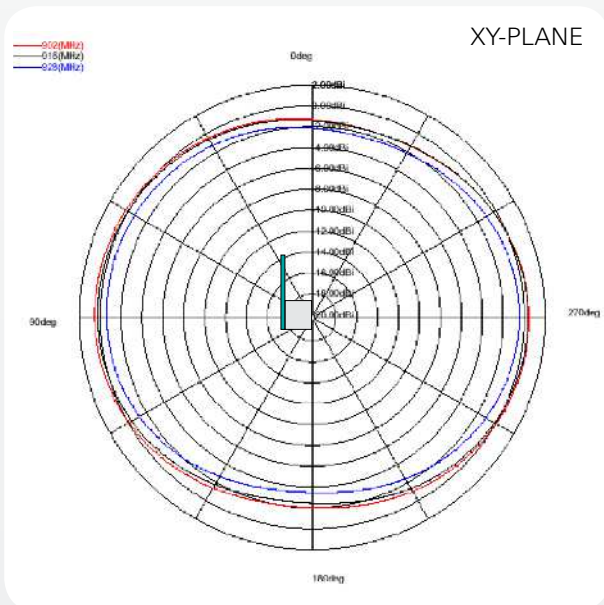
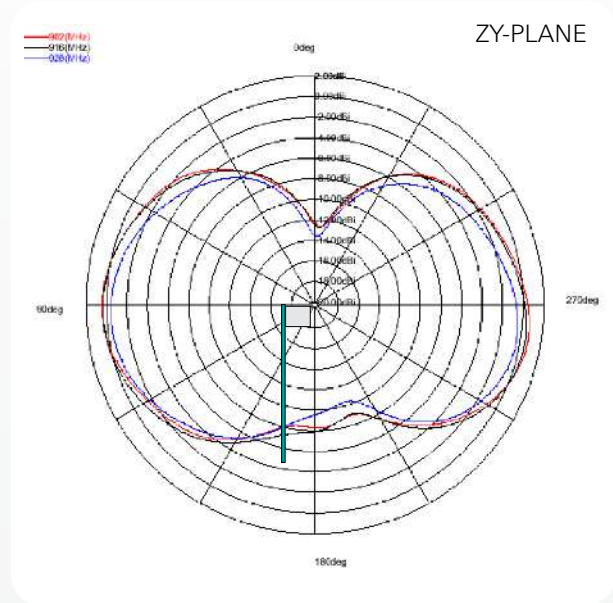
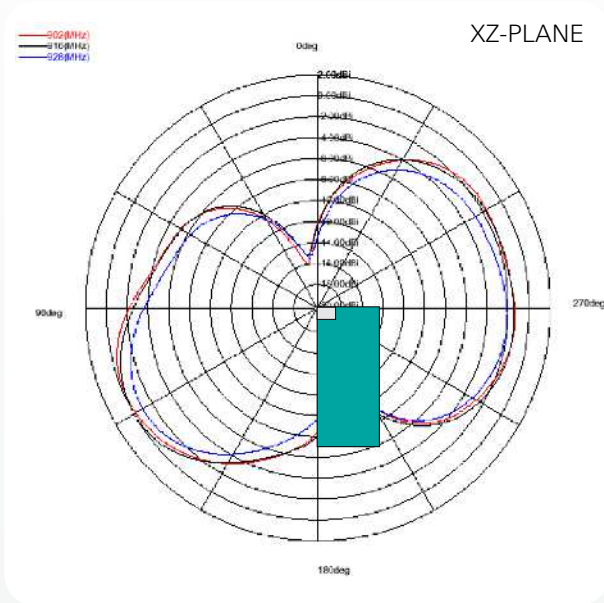
Takatie 6
90440 Kempele, Finland
Tel: +358 207 935 500
Fax: +358 207 935 501
www.pulseeng.com/antennas



ISM 900MHz Helical SMD-Antenna

Ground cleared under antenna, clearance area 6.00 x 11.00 mm. Pulse Part Number: W3112A

Typical Free space Radiation Patterns



Pulse Finland Oy

Takatie 6
90440 Kempele, Finland
Tel: +358 207 935 500
Fax: +358 207 935 501

www.pulseeng.com/antennas

