



Chipsmall Limited consists of a professional team with an average of over 10 year of expertise in the distribution of electronic components. Based in Hongkong, we have already established firm and mutual-benefit business relationships with customers from,Europe,America and south Asia,supplying obsolete and hard-to-find components to meet their specific needs.

With the principle of “Quality Parts,Customers Priority,Honest Operation,and Considerate Service”,our business mainly focus on the distribution of electronic components. Line cards we deal with include Microchip,ALPS,ROHM,Xilinx,Pulse,ON,Everlight and Freescale. Main products comprise IC,Modules,Potentiometer,IC Socket,Relay,Connector.Our parts cover such applications as commercial,industrial, and automotives areas.

We are looking forward to setting up business relationship with you and hope to provide you with the best service and solution. Let us make a better world for our industry!



Contact us

Tel: +86-755-8981 8866 Fax: +86-755-8427 6832

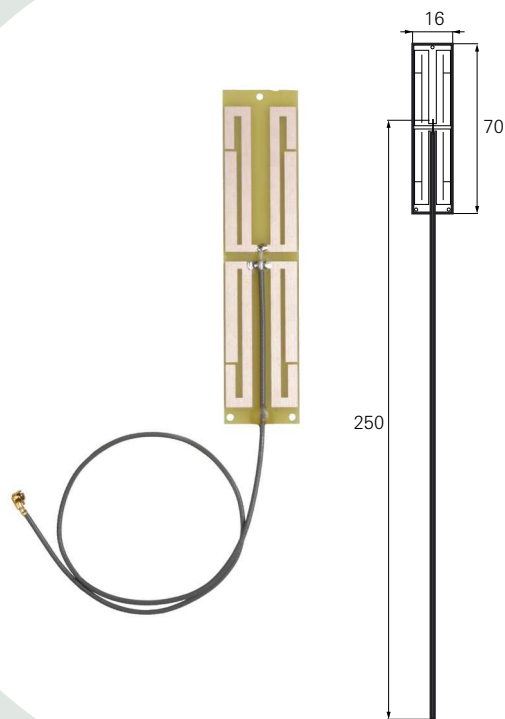
Email & Skype: info@chipsmall.com Web: www.chipsmall.com

Address: A1208, Overseas Decoration Building, #122 Zhenhua RD., Futian, Shenzhen, China



Access Point Router 802.11n Antenna

PWB Antenna with feed cable. Pulse Part Number: W3513



Features

- Low profile
- Omni directional gain in XY-plane
- Size W x L x H (16 x 70 x 0.9 mm)
- Antenna feed cable length: 250mm (total) / 212mm (from radiator edge)
- Antenna feed cable: 1.13mm OD with U.FL compatible connector
- Lead free materials
- RoHS Compliant Product

Applications

- Access point routers 802.11n
- WLAN/WiFi 802.11a/b/g/n

Electrical specifications @ +25 °C

Note: Electrical characteristics are measured on free space.

2.4 – 2.5 GHz

Typical free space performance

| Frequency Range [GHz] | 2.4 – 2.5 |
|--------------------------------|--|
| Linear Average Gain [dBi] | -3,5 |
| 3D Peak Gain [dBi] | 2,0 |
| Total 3D Efficiency [%] / [dB] | 72 / -1,4 (peak) 69 / -1,6 (band edges) |
| Return loss min. [dB] | -10 |
| Impedance [Ω] | 50 |
| Operating Temperature [°C] | -40 to +85 |

4.9 – 5.85 GHz

Typical free space performance

| Frequency Range [GHz] | 4.9 – 5.85 |
|--------------------------------|--|
| Linear Average Gain [dBi] | -4,5 |
| 3D Peak Gain [dBi] | 2,0 |
| Total 3D Efficiency [%] / [dB] | 65 / -1,9 (peak) 50 / -3,0 (band edges) |
| Return loss min. [dB] | -10 |
| Impedance [Ω] | 50 |
| Operating Temperature [°C] | -40 to +85 |

Pulse Finland Oy

Takatie 6
90440 Kempele, Finland
Tel: +358 207 935 500
Fax: +358 207 935 501

www.pulseeng.com/antennas

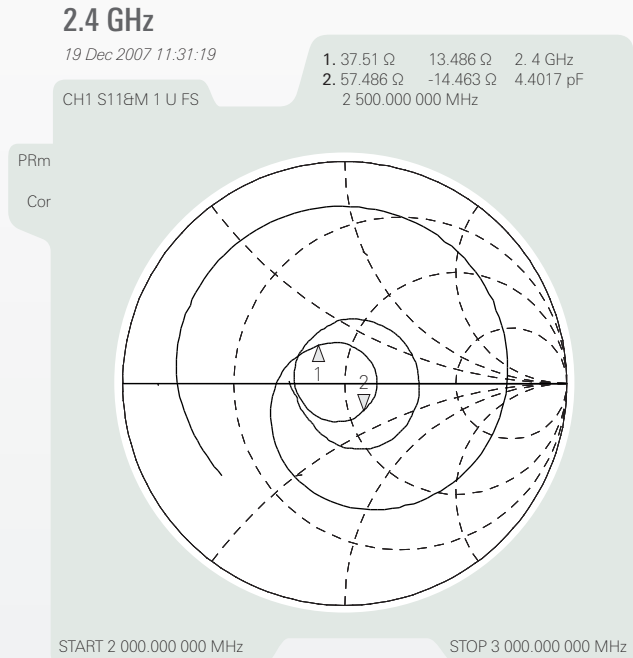
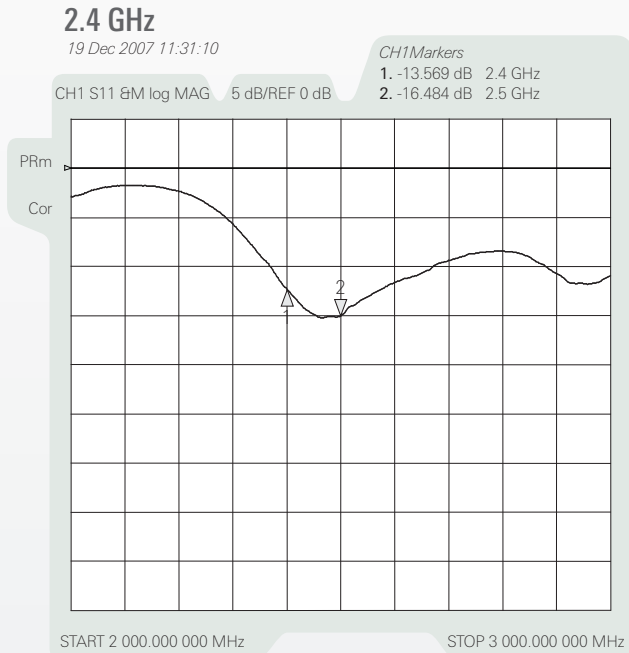


Access Point Router 802.11n Antenna

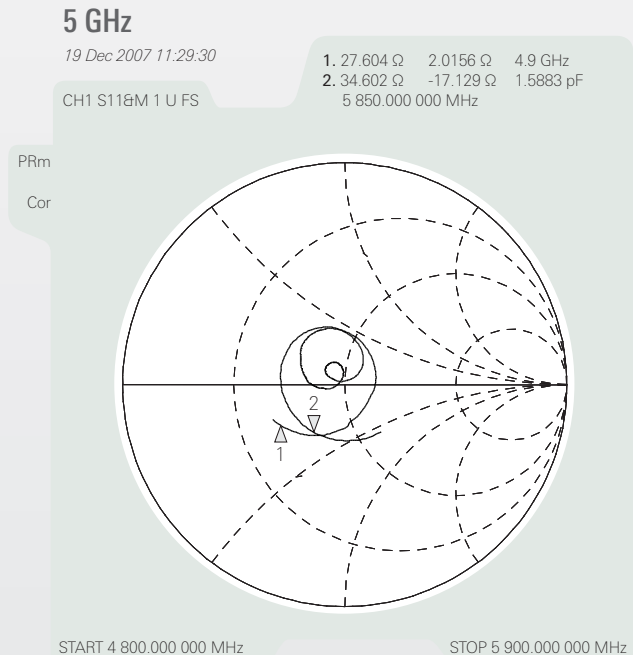
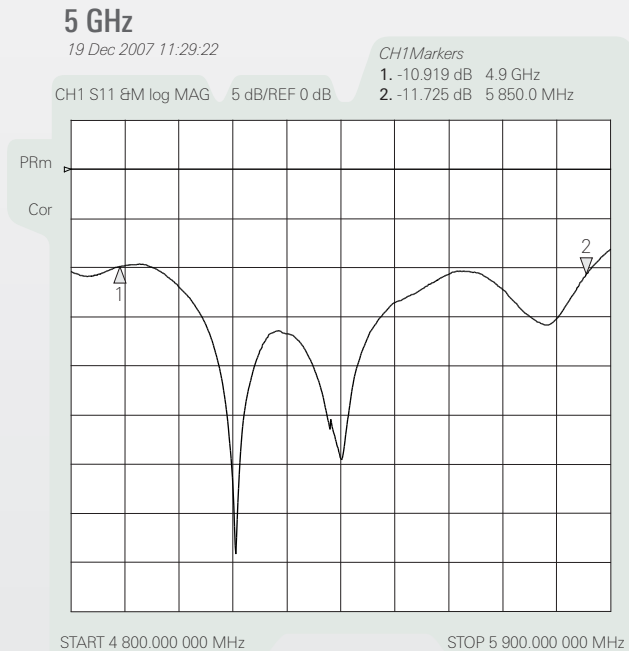
PWB Antenna with feed cable. Pulse Part Number: W3513

Typical Electrical Characteristics (T=25 °C)

2,4 GHz typical Return Loss S11/ impedance



5 GHz typical Return Loss S11/ impedance



Pulse Finland Oy

Takatie 6
90440 Kempele, Finland
Tel: +358 207 935 500
Fax: +358 207 935 501
www.pulseeng.com/antennas

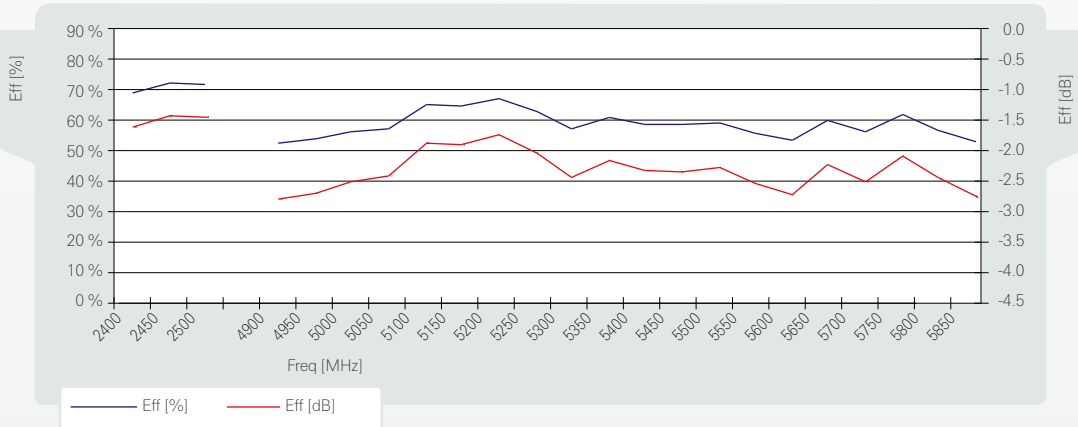


Access Point Router 802.11n Antenna

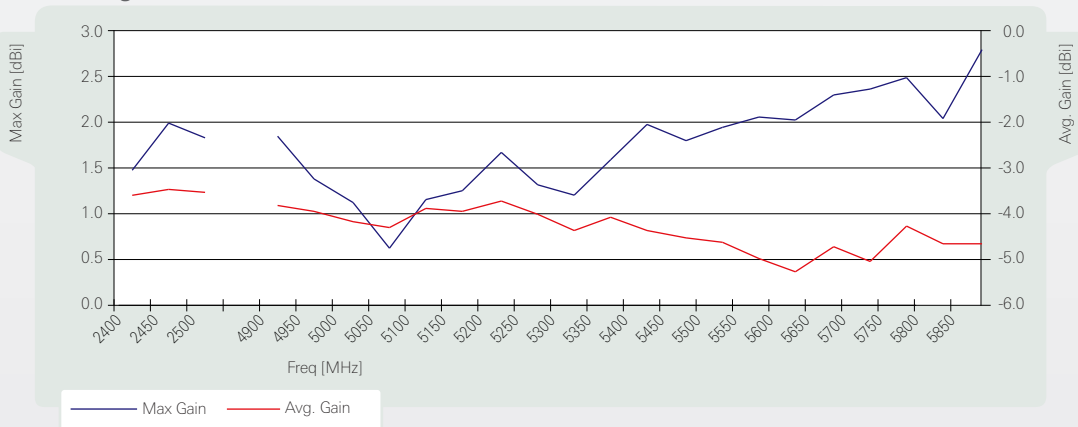
PWB Antenna with feed cable. Pulse Part Number: W3513

Free Space Efficiency, Average and Maximum Gain

Total 3D Efficiency



Average and Max Gain



Pulse Finland Oy

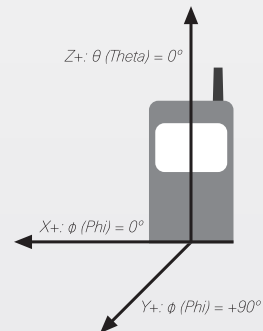
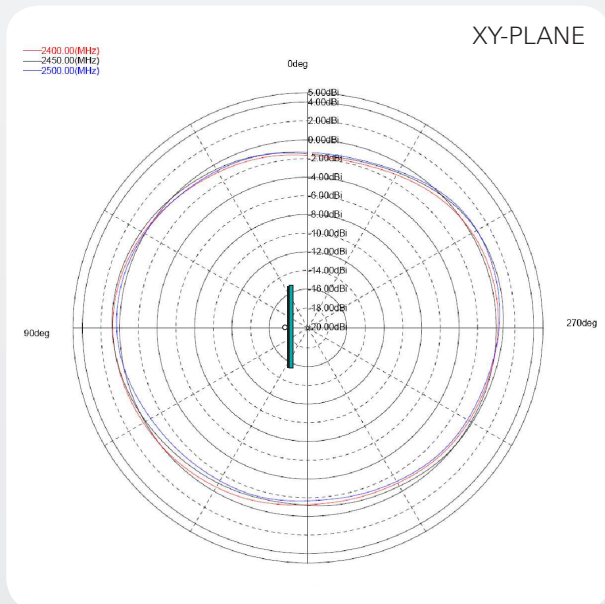
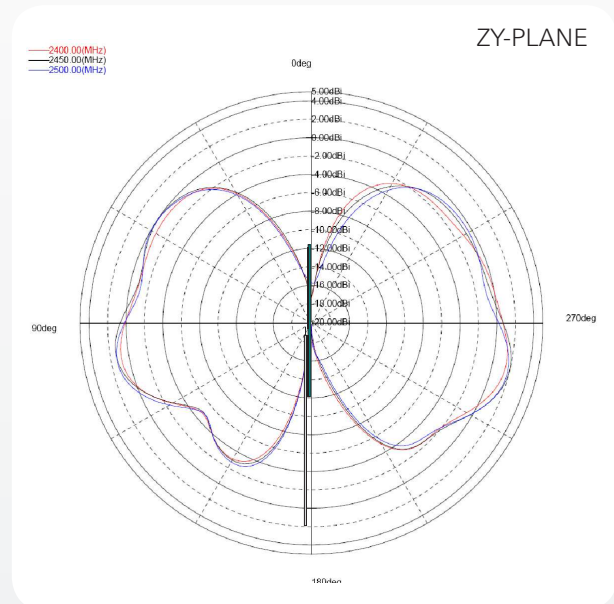
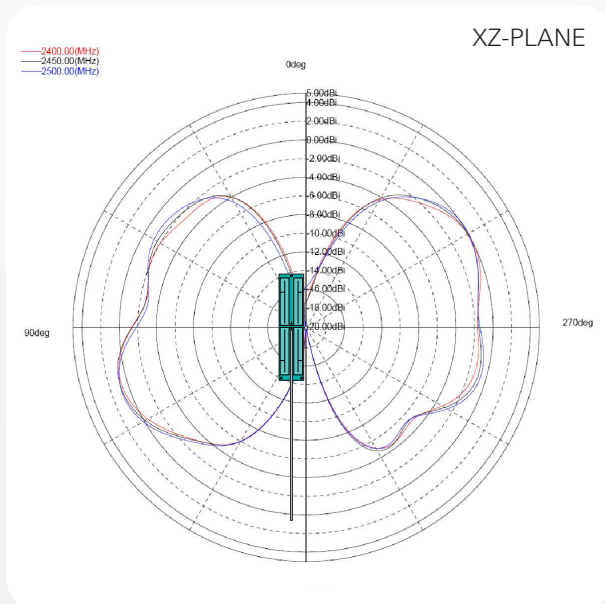
Takatie 6
 90440 Kempele, Finland
 Tel: +358 207 935 500
 Fax: +358 207 935 501
www.pulseeng.com/antennas



Access Point Router 802.11n Antenna

PWB Antenna with feed cable. Pulse Part Number: W3513

824 – 894 MHz Typical Free Space Radiation Patterns



Pulse Finland Oy

Takatie 6
 90440 Kempele, Finland
 Tel: +358 207 935 500
 Fax: +358 207 935 501

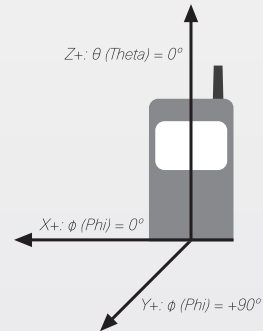
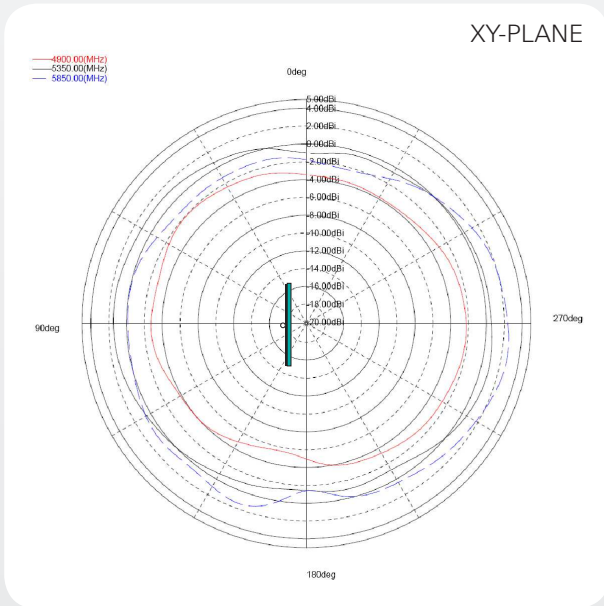
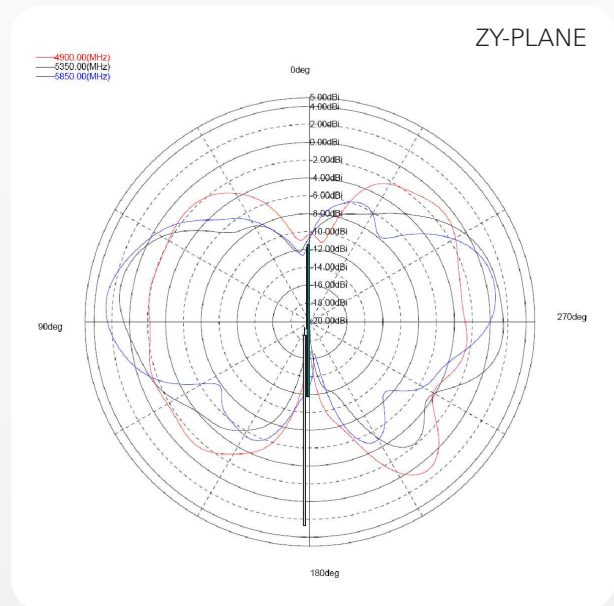
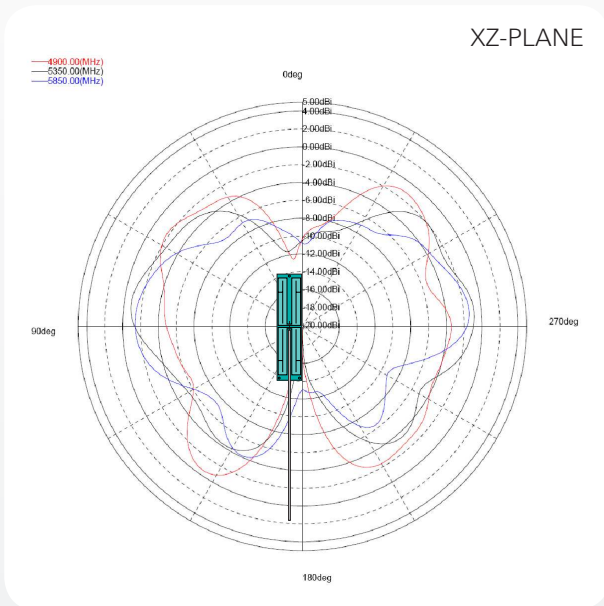
www.pulseeng.com/antennas



Access Point Router 802.11n Antenna

PWB Antenna with feed cable. Pulse Part Number: W3513

880 – 960 MHz Typical Free Space Radiation Patterns



Pulse Finland Oy

Takatie 6
90440 Kempele, Finland
Tel: +358 207 935 500
Fax: +358 207 935 501

www.pulseeng.com/antennas

