



Chipsmall Limited consists of a professional team with an average of over 10 year of expertise in the distribution of electronic components. Based in Hongkong, we have already established firm and mutual-benefit business relationships with customers from,Europe,America and south Asia,supplying obsolete and hard-to-find components to meet their specific needs.

With the principle of “Quality Parts,Customers Priority,Honest Operation,and Considerate Service”,our business mainly focus on the distribution of electronic components. Line cards we deal with include Microchip,ALPS,ROHM,Xilinx,Pulse,ON,Everlight and Freescale. Main products comprise IC,Modules,Potentiometer,IC Socket,Relay,Connector.Our parts cover such applications as commercial,industrial, and automotives areas.

We are looking forward to setting up business relationship with you and hope to provide you with the best service and solution. Let us make a better world for our industry!



Contact us

Tel: +86-755-8981 8866 Fax: +86-755-8427 6832

Email & Skype: info@chipsmall.com Web: www.chipsmall.com

Address: A1208, Overseas Decoration Building, #122 Zhenhua RD., Futian, Shenzhen, China



Description: LTE 698-2690MHz Swivel Dipole

Series: OMNI Antenna

PART NUMBER: W5084x



Features:

- 698-2690MHz
- Omni radiation pattern in horizontal plane
- Gain 2/4 dBi
- Power rating 5W
- IP65
- Connector options:
 - W5084 TNC male
 - W5084K SMA male

Applications:

- LTE radios
- 2G/3G/4G radios
- Gateways, Routers, Set top boxes, Security, Metering
- IoT, M2M
- Optimized for straight and 90deg bent positions



All dimensions are in mm / inches

Issue: 1653

In the effort to improve our products, we reserve the right to make changes judged to be necessary.

CONFIDENTIAL AND PROPRIETARY INFORMATION

This document contains confidential and proprietary information of Pulse Electronics, Inc. (Pulse) and is protected by copyright, trade secret and other state and federal laws. Its receipt or possession does not convey any rights to reproduce, disclose its contents, or to manufacture, use or sell anything it may describe. Reproduction, disclosure or use without specific written authorization of Pulse is strictly forbidden.

For more information:

Pulse Worldwide Headquarters
12220 World Trade Drive
San Diego, CA 92128
USA
Tel: 1-858-674-8100

Pulse/Larsen Antennas
18110 SE 34th St Bldg 2 Suite 250
Vancouver, WA 98683
USA
Tel: 1-360-944-7551

Europe Headquarters
Pulse GmbH & Do, KG
Zeppelinstrasse 15
Herrenberg, Germany
Tel: 49 7032 7806 0

Pulse (Suzhou) Wireless Products Co, Inc.
99 Huo Ju Road(#29 Bldg,4th Phase
Suzhou New District
Jiangsu Province, Suzhou 215009 PR China
Tel: 86 512 6807 9998



Description: LTE 698-2690MHz Swivel Dipole

Series: OMNI Antenna

PART NUMBER: W5084x

ELECTRICAL SPECIFICATIONS

Frequency	698-960/1400-2690	MHz
Nominal Impedance	50	Ω
VSWR	2.5	Max
Average Efficiency(698-960MHz)	58	%
Average Efficiency(1400-2690MHz)	78	%
Peak Gain (698-960MHz)	2	dBi +/- 1 dB
Peak Gain (1400-2690MHz)	4	dBi +/- 1 dB
Polarization:	Vertical	
Power withstanding	5	W
Connector type	TNC male (SMA male is optional)	
Connector Options	W5084	TNC male connector
	W5084K	SMA male connector

Description: LTE 698-2690MHz Swivel Dipole

Series: OMNI Antenna

PART NUMBER: W5084x

MECHANICAL SPECIFICATIONS

Plastic radome	ABS/PC
Color	Black
Flammability	UL94-V0
Ingress Protection	IP65
Weight	65.9 g
Overall Length(W5084/W5084K)	228.84/223.24mm [9.01/8.79INCHES]
Position	0°, 45° & 90°

ENVIRONMENTAL SPECIFICATIONS

Operating temperature	-40/+85 ° C
Storage Temperature	-40/+85 ° C
Salt mist	96 hours

Issue: 1653

In the effort to improve our products, we reserve the right to make changes judged to be necessary.

CONFIDENTIAL AND PROPRIETARY INFORMATION

This document contains confidential and proprietary information of Pulse Electronics, Inc. (Pulse) and is protected by copyright, trade secret and other state and federal laws. Its receipt or possession does not convey any rights to reproduce, disclose its contents, or to manufacture, use or sell anything it may describe. Reproduction, disclosure or use without specific written authorization of Pulse is strictly forbidden.

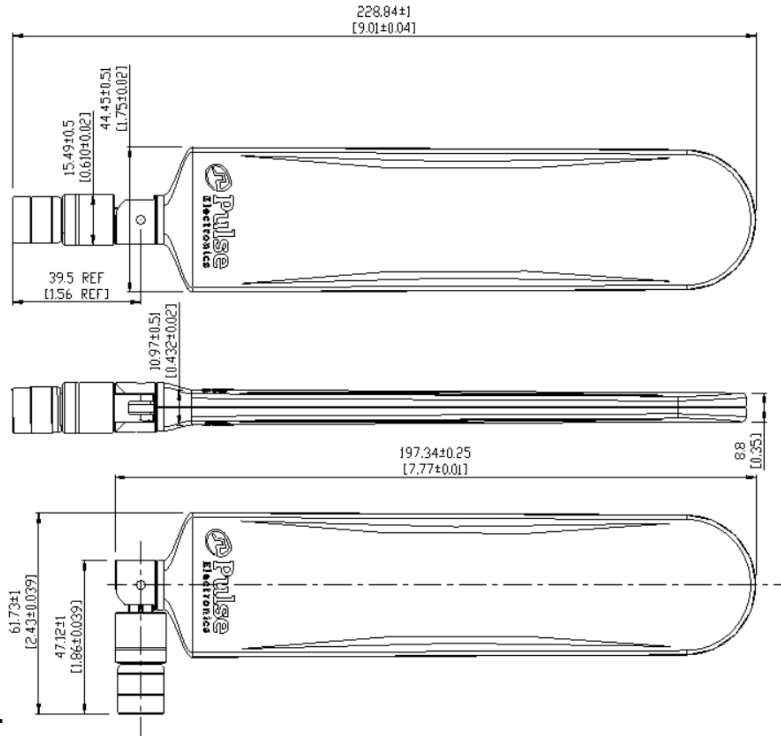
Description: LTE 698-2690MHz Swivel Dipole

Series: OMNI Antenna

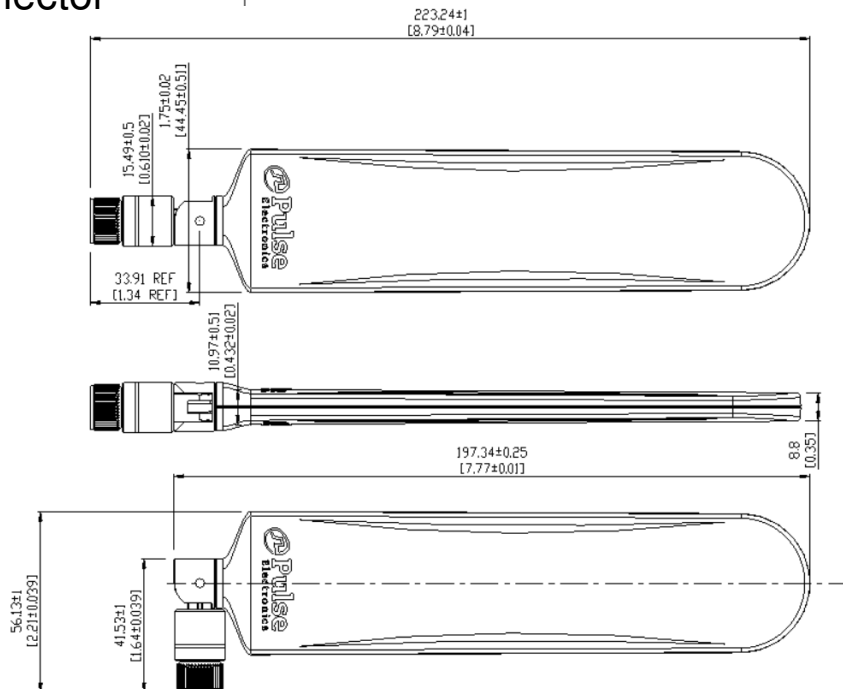
PART NUMBER: W5084x

MECHANICAL DRAWING

W5084 TNC male connector



W5084K SMA male connector



Issue: 1653

In the effort to improve our products, we reserve the right to make changes judged to be necessary.

CONFIDENTIAL AND PROPRIETARY INFORMATION

This document contains confidential and proprietary information of Pulse Electronics, Inc. (Pulse) and is protected by copyright, trade secret and other state and federal laws. Its receipt or possession does not convey any rights to reproduce, disclose its contents, or to manufacture, use or sell anything it may describe. Reproduction, disclosure or use without specific written authorization of Pulse is strictly forbidden.

Description: LTE 698-2690MHz Swivel Dipole

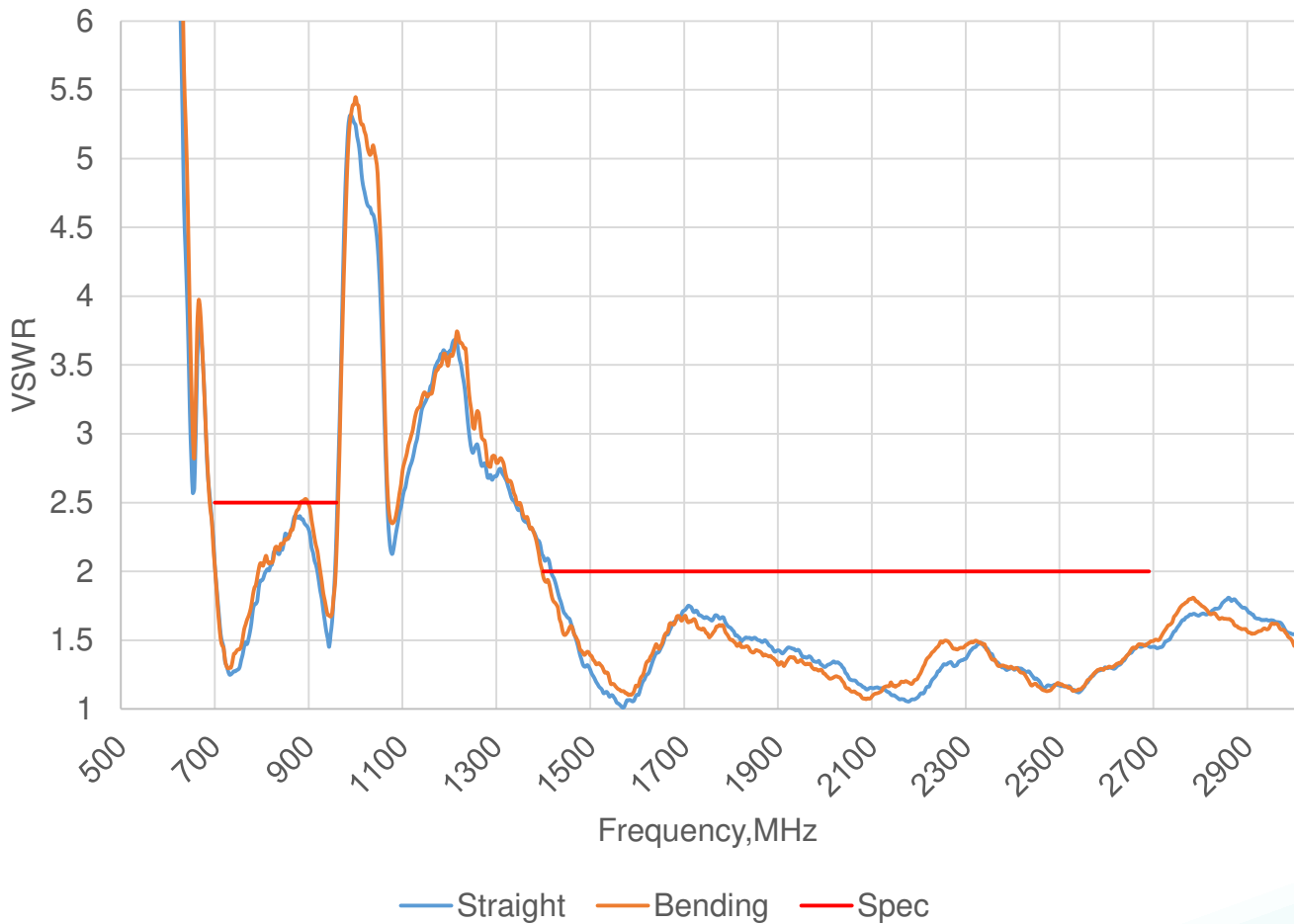
Series: OMNI Antenna

PART NUMBER: W5084x

CHARTS

VSWR

VSWR vs Frequency measured in free space
W5084X measured in PSU



Issue: 1653

In the effort to improve our products, we reserve the right to make changes judged to be necessary.

CONFIDENTIAL AND PROPRIETARY INFORMATION

This document contains confidential and proprietary information of Pulse Electronics, Inc. (Pulse) and is protected by copyright, trade secret and other state and federal laws. Its receipt or possession does not convey any rights to reproduce, disclose its contents, or to manufacture, use or sell anything it may describe. Reproduction, disclosure or use without specific written authorization of Pulse is strictly forbidden.

Description: LTE 698-2690MHz Swivel Dipole

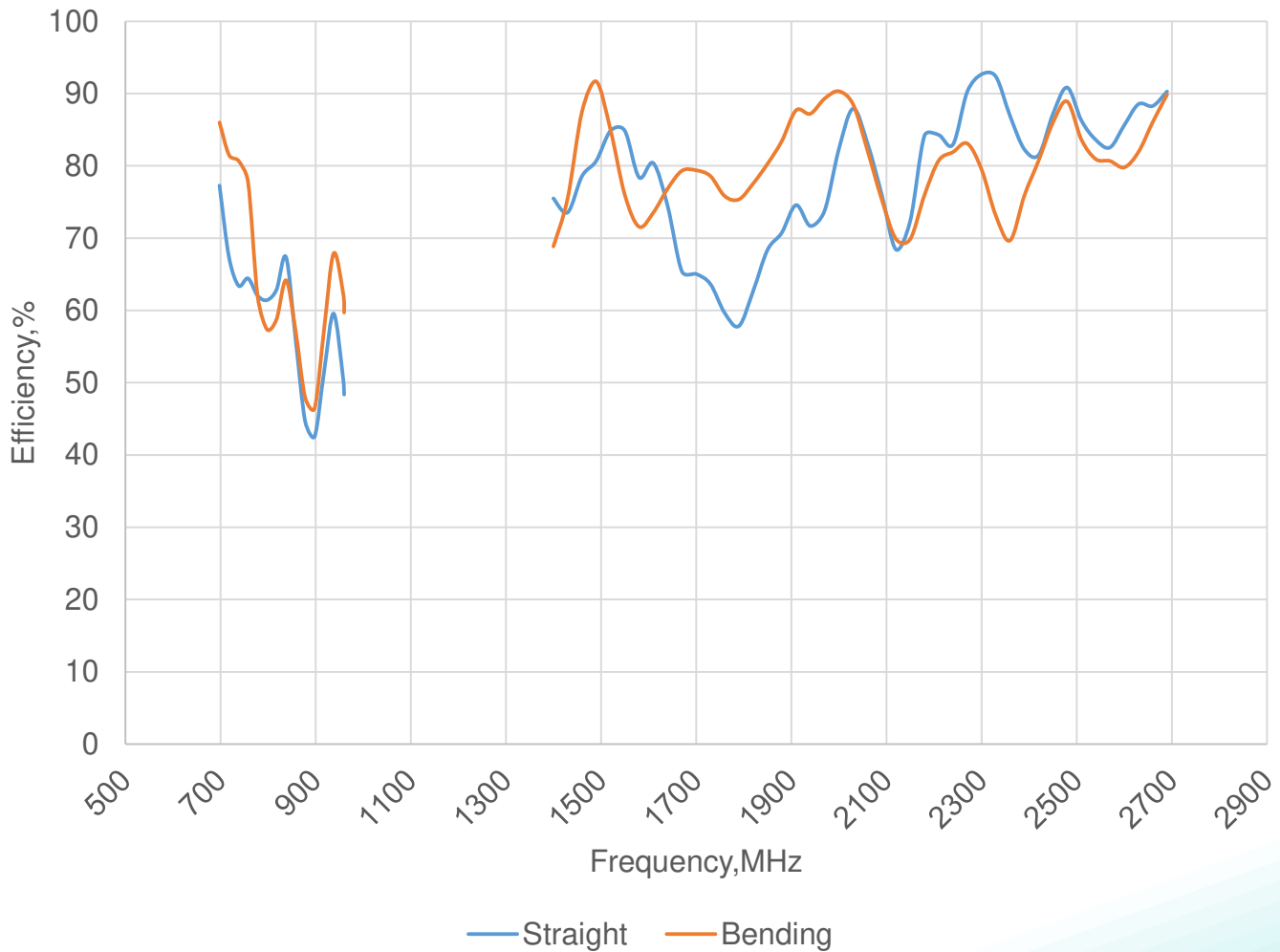
Series: OMNI Antenna

PART NUMBER: W5084x

CHARTS

Efficiency

Efficiency vs Frequency measured in free space
W5084X measured in PSU



Issue: 1653

In the effort to improve our products, we reserve the right to make changes judged to be necessary.

CONFIDENTIAL AND PROPRIETARY INFORMATION

This document contains confidential and proprietary information of Pulse Electronics, Inc. (Pulse) and is protected by copyright, trade secret and other state and federal laws. Its receipt or possession does not convey any rights to reproduce, disclose its contents, or to manufacture, use or sell anything it may describe. Reproduction, disclosure or use without specific written authorization of Pulse is strictly forbidden.

Description: LTE 698-2690MHz Swivel Dipole

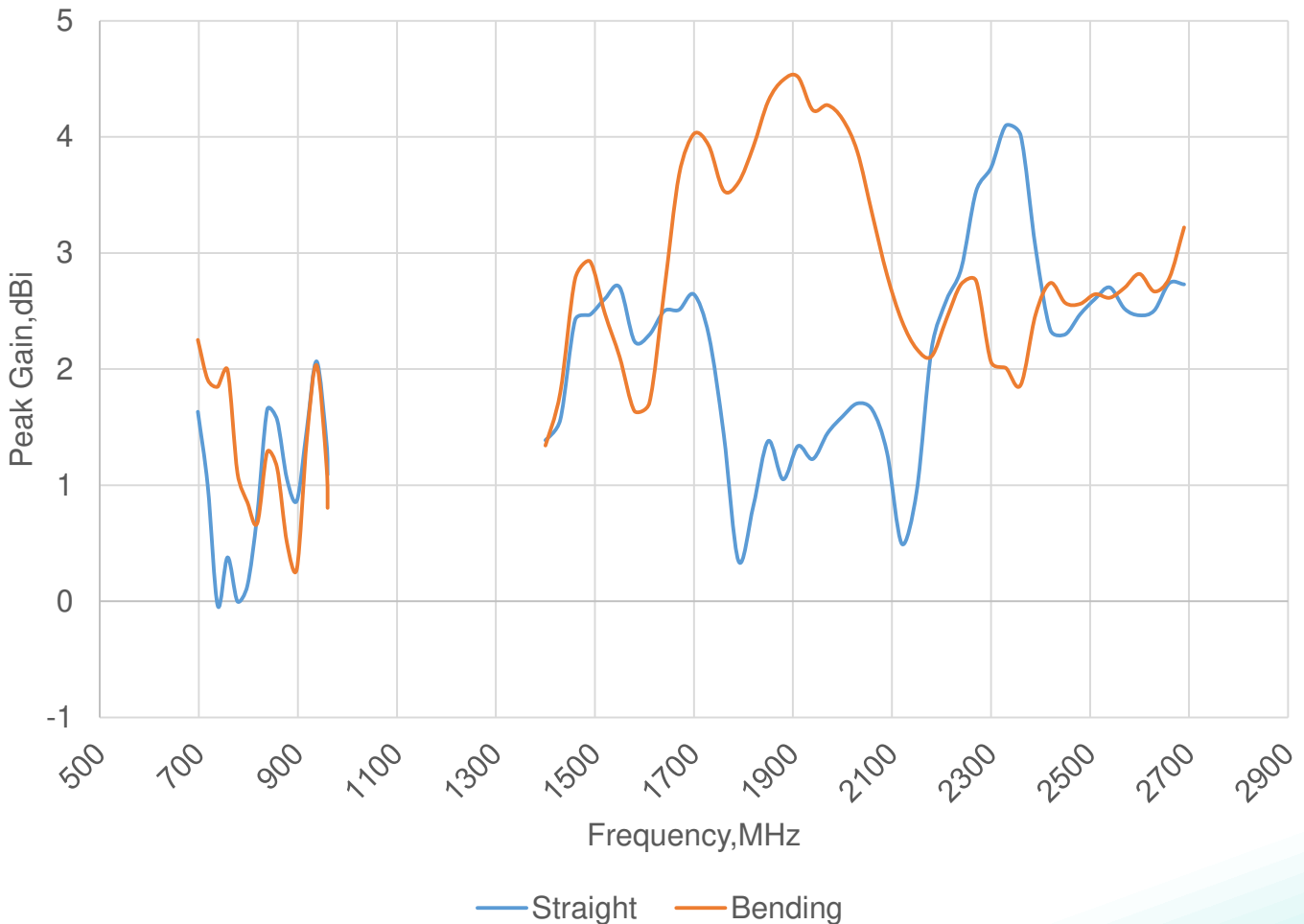
Series: OMNI Antenna

PART NUMBER: W5084x

CHARTS

Peak Gain

Peak Gain vs Frequency measured in free space
W5084X measured in PSU



Issue: 1653

In the effort to improve our products, we reserve the right to make changes judged to be necessary.

CONFIDENTIAL AND PROPRIETARY INFORMATION

This document contains confidential and proprietary information of Pulse Electronics, Inc. (Pulse) and is protected by copyright, trade secret and other state and federal laws. Its receipt or possession does not convey any rights to reproduce, disclose its contents, or to manufacture, use or sell anything it may describe. Reproduction, disclosure or use without specific written authorization of Pulse is strictly forbidden.

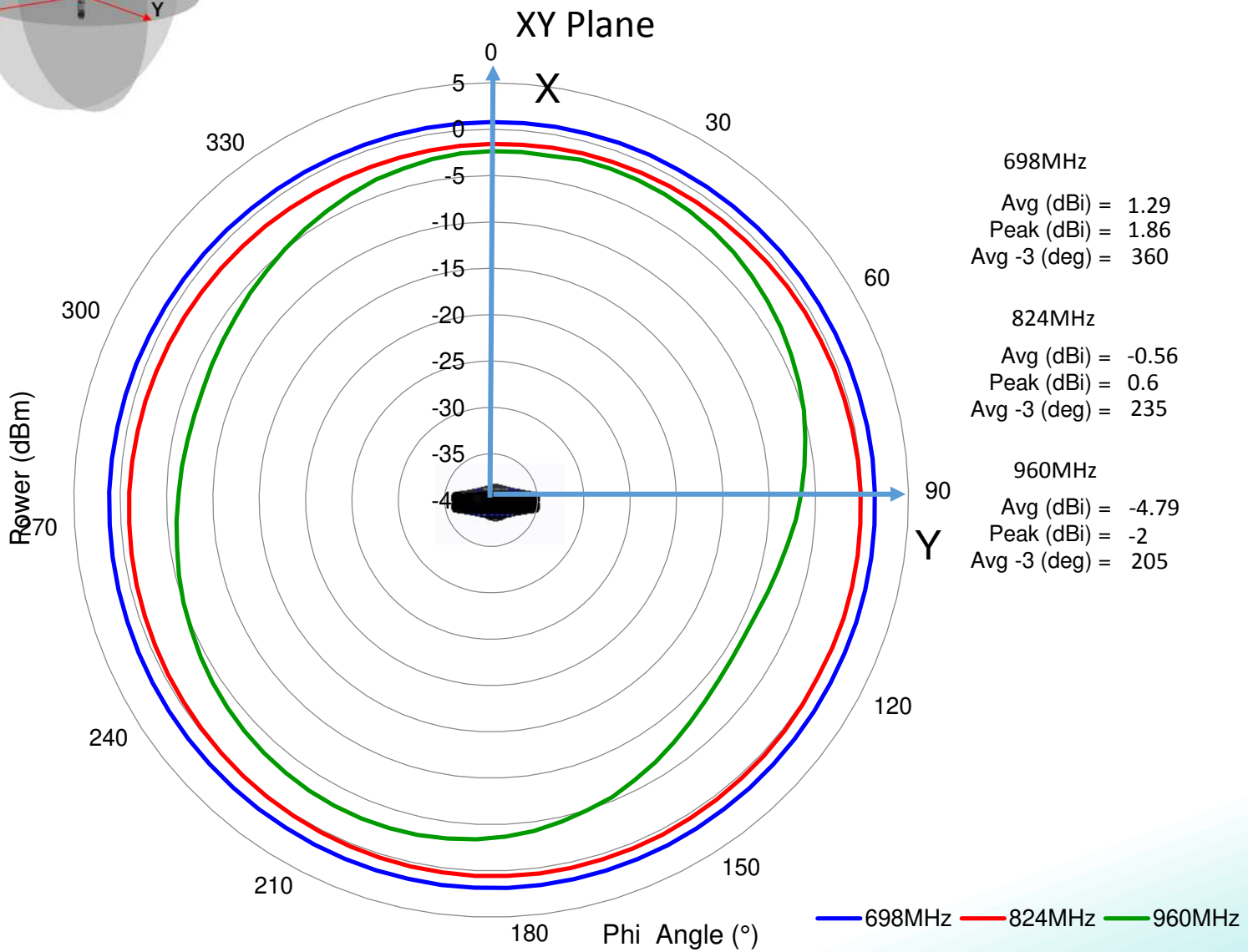
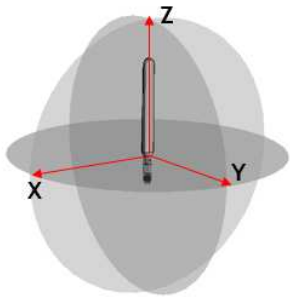
Description: LTE 698-2690MHz Swivel Dipole

Series: OMNI Antenna

PART NUMBER: W5084x

CHARTS

Gain Plots



Issue: 1653

In the effort to improve our products, we reserve the right to make changes judged to be necessary.

CONFIDENTIAL AND PROPRIETARY INFORMATION

This document contains confidential and proprietary information of Pulse Electronics, Inc. (Pulse) and is protected by copyright, trade secret and other state and federal laws. Its receipt or possession does not convey any rights to reproduce, disclose its contents, or to manufacture, use or sell anything it may describe. Reproduction, disclosure or use without specific written authorization of Pulse is strictly forbidden.

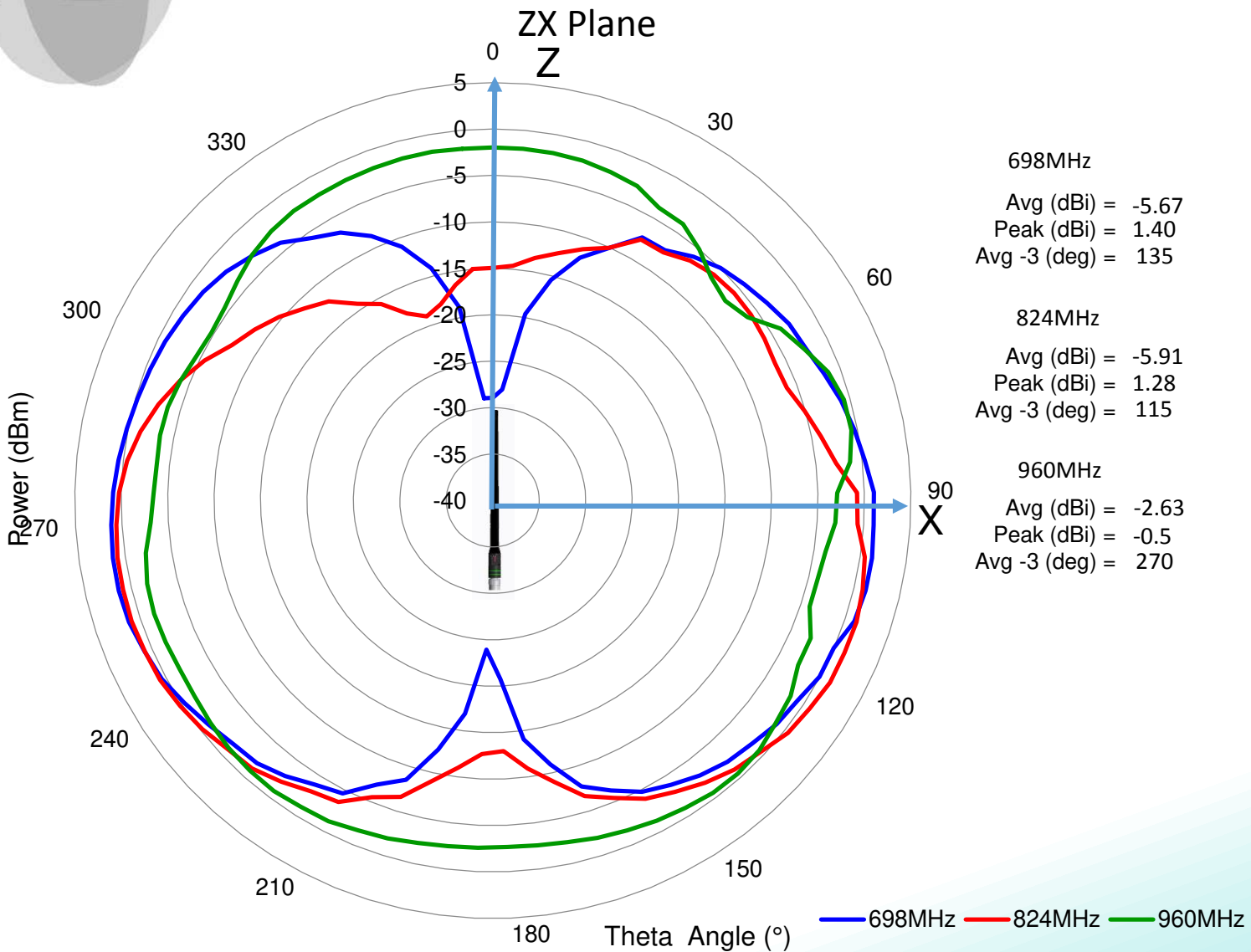
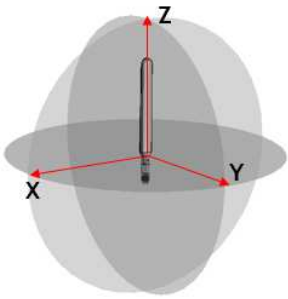
Description: LTE 698-2690MHz Swivel Dipole

Series: OMNI Antenna

PART NUMBER: W5084x

CHARTS

Gain Plots



Issue: 1653

In the effort to improve our products, we reserve the right to make changes judged to be necessary.

CONFIDENTIAL AND PROPRIETARY INFORMATION

This document contains confidential and proprietary information of Pulse Electronics, Inc. (Pulse) and is protected by copyright, trade secret and other state and federal laws. Its receipt or possession does not convey any rights to reproduce, disclose its contents, or to manufacture, use or sell anything it may describe. Reproduction, disclosure or use without specific written authorization of Pulse is strictly forbidden.



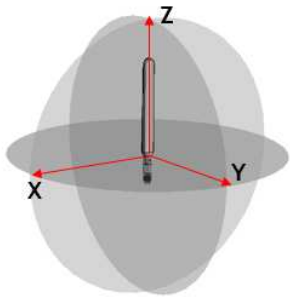
Description: LTE 698-2690MHz Swivel Dipole

Series: OMNI Antenna

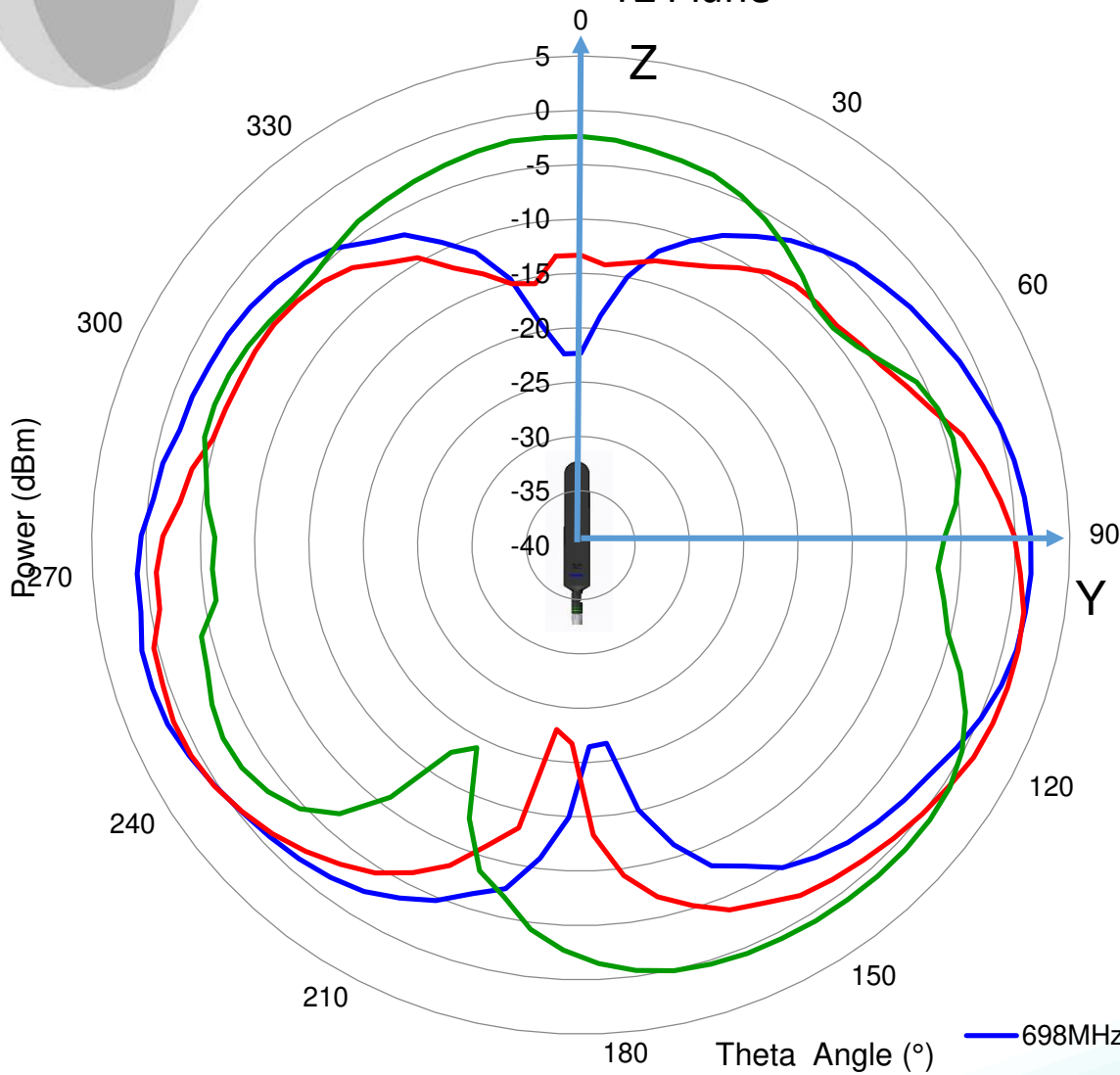
PART NUMBER: W5084x

CHARTS

Gain Plots



YZ Plane



698MHz	Avg (dBi) = -5.15
	Peak (dBi) = 1.54
	Avg -3 (deg) = 120
824MHz	Avg (dBi) = -6.02
	Peak (dBi) = 1.41
	Avg -3 (deg) = 110
960MHz	Avg (dBi) = -4.54
	Peak (dBi) = 0.95
	Avg -3 (deg) = 65

— 698MHz — 824MHz — 960MHz

Issue: 1653

In the effort to improve our products, we reserve the right to make changes judged to be necessary.

CONFIDENTIAL AND PROPRIETARY INFORMATION

This document contains confidential and proprietary information of Pulse Electronics, Inc. (Pulse) and is protected by copyright, trade secret and other state and federal laws. Its receipt or possession does not convey any rights to reproduce, disclose its contents, or to manufacture, use or sell anything it may describe. Reproduction, disclosure or use without specific written authorization of Pulse is strictly forbidden.



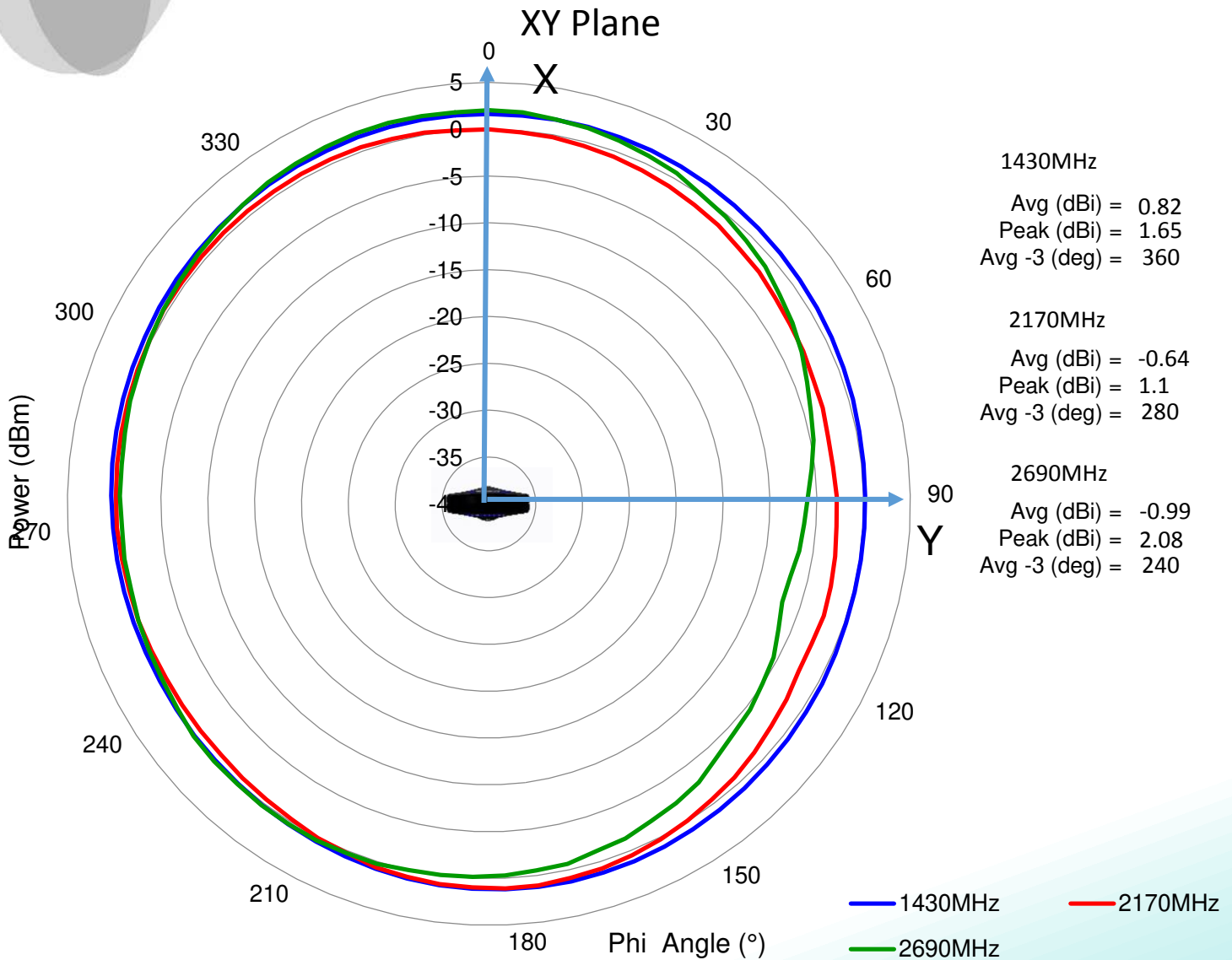
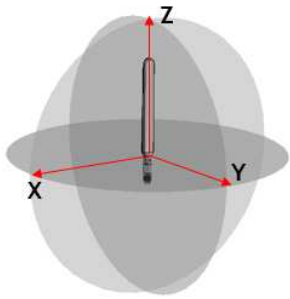
Description: LTE 698-2690MHz Swivel Dipole

Series: OMNI Antenna

PART NUMBER: W5084x

CHARTS

Gain Plots



Issue: 1653

In the effort to improve our products, we reserve the right to make changes judged to be necessary.

CONFIDENTIAL AND PROPRIETARY INFORMATION

This document contains confidential and proprietary information of Pulse Electronics, Inc. (Pulse) and is protected by copyright, trade secret and other state and federal laws. Its receipt or possession does not convey any rights to reproduce, disclose its contents, or to manufacture, use or sell anything it may describe. Reproduction, disclosure or use without specific written authorization of Pulse is strictly forbidden.

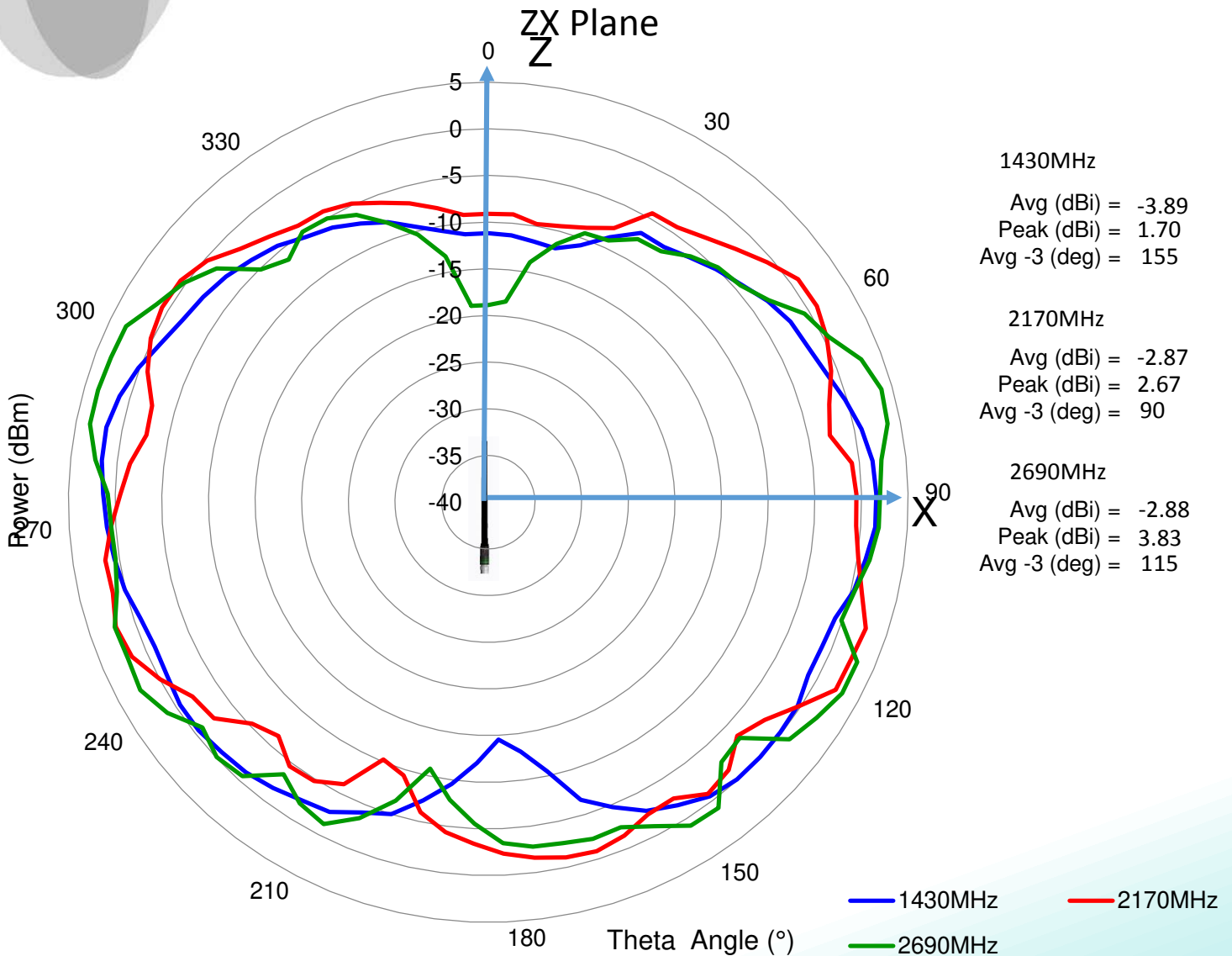
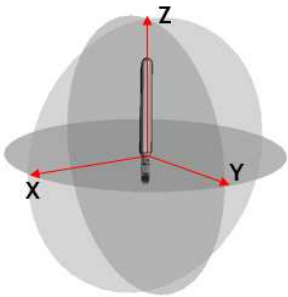
Description: LTE 698-2690MHz Swivel Dipole

Series: OMNI Antenna

PART NUMBER: W5084x

CHARTS

Gain Plots



Issue: 1653

In the effort to improve our products, we reserve the right to make changes judged to be necessary.

CONFIDENTIAL AND PROPRIETARY INFORMATION

This document contains confidential and proprietary information of Pulse Electronics, Inc. (Pulse) and is protected by copyright, trade secret and other state and federal laws. Its receipt or possession does not convey any rights to reproduce, disclose its contents, or to manufacture, use or sell anything it may describe. Reproduction, disclosure or use without specific written authorization of Pulse is strictly forbidden.



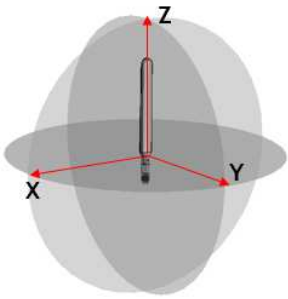
Description: LTE 698-2690MHz Swivel Dipole

Series: OMNI Antenna

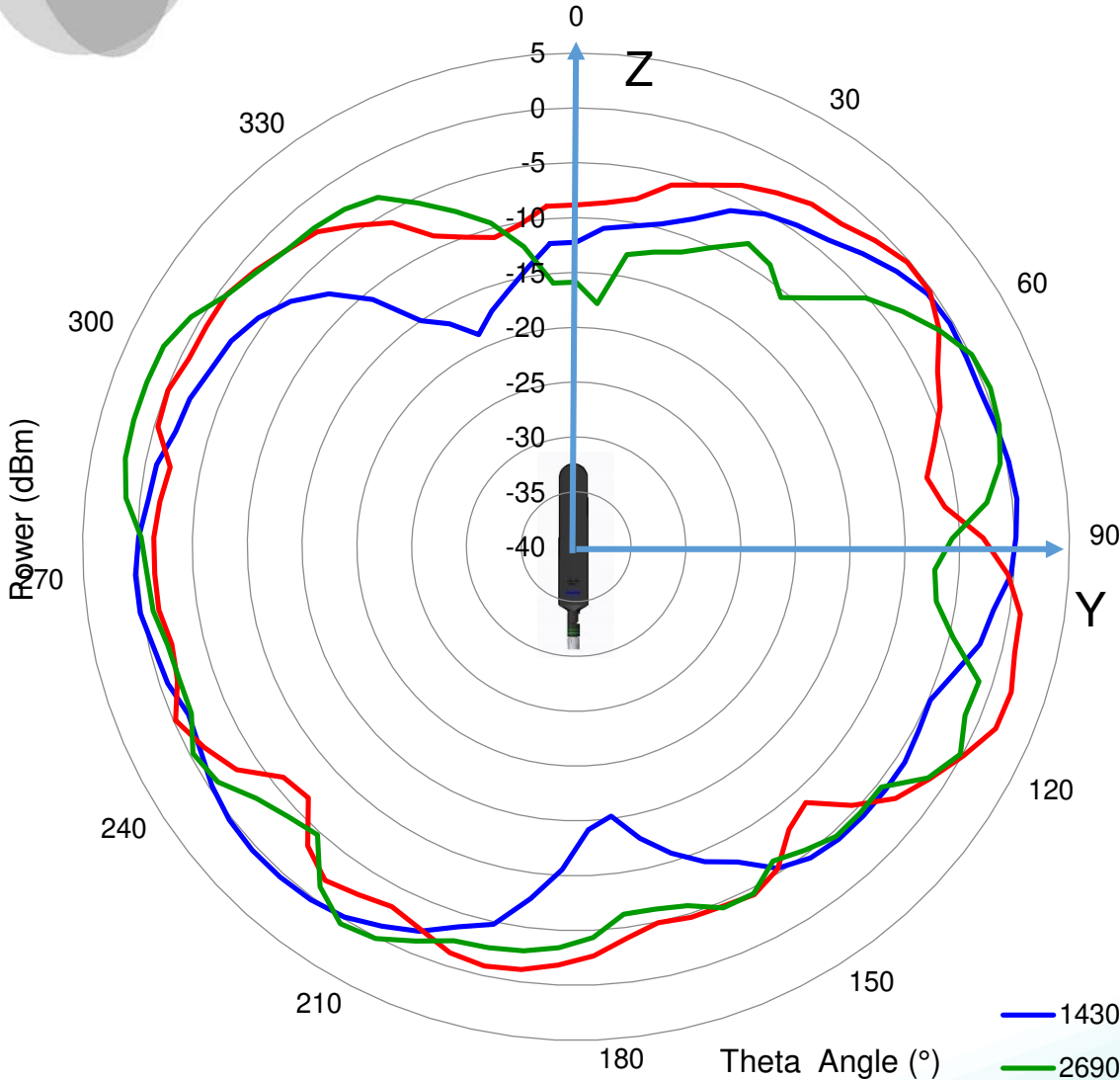
PART NUMBER: W5084x

CHARTS

Gain Plots



YZ Plane



1430MHz	Avg (dBi) = -5.31
	Peak (dBi) = 0.45
	Avg -3 (deg) = 150
2170MHz	Avg (dBi) = -3.61
	Peak (dBi) = 1.85
	Avg -3 (deg) = 80
2690MHz	Avg (dBi) = -4.28
	Peak (dBi) = 1.96
	Avg -3 (deg) = 90

— 1430MHz — 2170MHz
— 2690MHz

Issue: 1653

In the effort to improve our products, we reserve the right to make changes judged to be necessary.

CONFIDENTIAL AND PROPRIETARY INFORMATION

This document contains confidential and proprietary information of Pulse Electronics, Inc. (Pulse) and is protected by copyright, trade secret and other state and federal laws. Its receipt or possession does not convey any rights to reproduce, disclose its contents, or to manufacture, use or sell anything it may describe. Reproduction, disclosure or use without specific written authorization of Pulse is strictly forbidden.



Description: LTE 698-2690MHz Swivel Dipole

Series: OMNI Antenna

PART NUMBER: W5084x

PACKAGING

1PCS/PE bag

100PCS/Carton box

Issue: 1653

In the effort to improve our products, we reserve the right to make changes judged to be necessary.

CONFIDENTIAL AND PROPRIETARY INFORMATION

This document contains confidential and proprietary information of Pulse Electronics, Inc. (Pulse) and is protected by copyright, trade secret and other state and federal laws. Its receipt or possession does not convey any rights to reproduce, disclose its contents, or to manufacture, use or sell anything it may describe. Reproduction, disclosure or use without specific written authorization of Pulse is strictly forbidden.