



Chipsmall Limited consists of a professional team with an average of over 10 year of expertise in the distribution of electronic components. Based in Hongkong, we have already established firm and mutual-benefit business relationships with customers from,Europe,America and south Asia,supplying obsolete and hard-to-find components to meet their specific needs.

With the principle of "Quality Parts,Customers Priority,Honest Operation,and Considerate Service",our business mainly focus on the distribution of electronic components. Line cards we deal with include Microchip,ALPS,ROHM,Xilinx,Pulse,ON,Everlight and Freescale. Main products comprise IC,Modules,Potentiometer,IC Socket,Relay,Connector.Our parts cover such applications as commercial,industrial, and automotives areas.

We are looking forward to setting up business relationship with you and hope to provide you with the best service and solution. Let us make a better world for our industry!



## Contact us

Tel: +86-755-8981 8866 Fax: +86-755-8427 6832

Email & Skype: [info@chipsmall.com](mailto:info@chipsmall.com) Web: [www.chipsmall.com](http://www.chipsmall.com)

Address: A1208, Overseas Decoration Building, #122 Zhenhua RD., Futian, Shenzhen, China

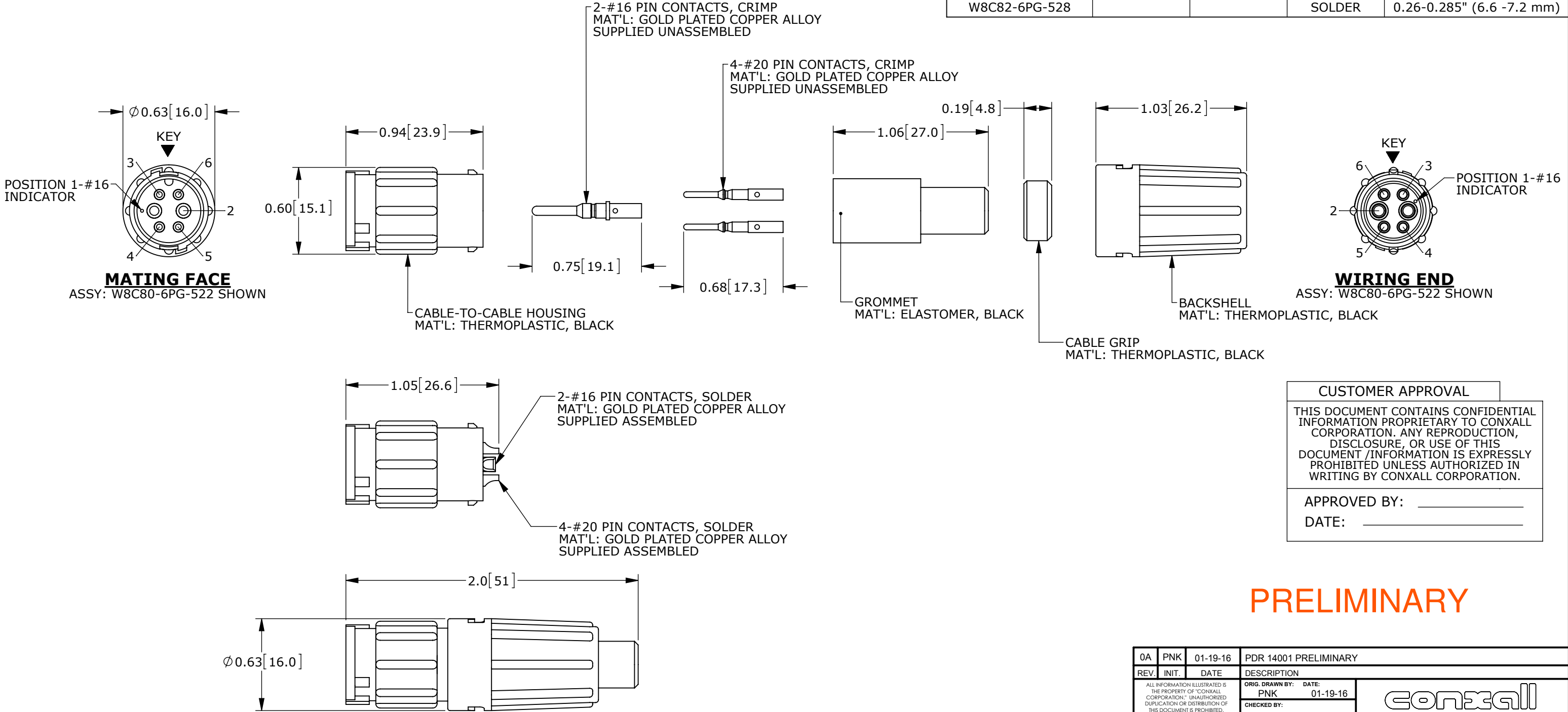


CUSTOMER PRINT

PART NUMBER: W8C8X-6PG-5XX\_CD

NOTES:  
1. ALL PARTS TO BE BULK PACKED.  
2. SEE DRAWING HPMIMIX FOR HOLE PATTERN.  
3. DIMENSIONS ARE FOR REFERENCE ONLY.


CONNECTOR P/N	POSITIONS		CONTACT STYLE	CABLE O.D. RANGE
	#16	#20		
W8C80-6PG-513	2	4	CRIMP	0.13-0.15" (3.3 -3.8 mm)
W8C80-6PG-516			CRIMP	0.16-0.18" (4.1 -4.6 mm)
W8C80-6PG-519			CRIMP	0.19-0.21" (4.8 -5.3 mm)
W8C80-6PG-522			CRIMP	0.22-0.25" (5.6 -6.3 mm)
W8C80-6PG-528			CRIMP	0.26-0.285" (6.6 -7.2 mm)
W8C82-6PG-513			SOLDER	0.13-0.15" (3.3 -3.8 mm)
W8C82-6PG-516			SOLDER	0.16-0.18" (4.1 -4.6 mm)
W8C82-6PG-519			SOLDER	0.19-0.21" (4.8 -5.3 mm)
W8C82-6PG-522			SOLDER	0.22-0.25" (5.6 -6.3 mm)
W8C82-6PG-528			SOLDER	0.26-0.285" (6.6 -7.2 mm)



CUSTOMER APPROVAL	
THIS DOCUMENT CONTAINS CONFIDENTIAL INFORMATION PROPRIETARY TO CONXALL CORPORATION. ANY REPRODUCTION, DISCLOSURE, OR USE OF THIS DOCUMENT /INFORMATION IS EXPRESSLY PROHIBITED UNLESS AUTHORIZED IN WRITING BY CONXALL CORPORATION.	
APPROVED BY:	_____
DATE:	_____

PRELIMINARY

RoHS COMPLIANT

0A	PNK	01-19-16	PDR 14001 PRELIMINARY		
REV.	INIT.	DATE	DESCRIPTION		
ALL INFORMATION ILLUSTRATED IS THE PROPERTY OF "CONXALL CORPORATION." UNAUTHORIZED DUPLICATION OR DISTRIBUTION OF THIS DOCUMENT IS PROHIBITED.			ORIG. DRAWN BY: PNK	DATE: 01-19-16	 601 E. WILDWOOD VILLA PARK, IL 60181
			CHECKED BY:		
ALL UNITS ARE IN FEET, INCHES, FRACTION OF INCHES AND DECIMALS. UNLESS OTHERWISE SPECIFIED TOLERANCES: 3 PLACE DECIMALS ±.005 ANGLES ±1° FRACTIONS ±1/16 - CRITICAL CHARACTERISTIC FLAG PER SPEC. XXXX			APPROVED BY:		TITLE: CABLE-TO-CABLE CONNECTOR 2-16 + 4-20 PIN CONTACTS MINI-CON-X POWER/SIGNAL CUSTOMER: STANDARD PRODUCT
			SCALE: NTS	SIZE: B	
FILE: W8C8X-6PG-5XX_CD			DIRECTORY: SLW	PART NUMBER: W8C8X-6PG-5XX_CD	REV 0A