



Chipsmall Limited consists of a professional team with an average of over 10 year of expertise in the distribution of electronic components. Based in Hongkong, we have already established firm and mutual-benefit business relationships with customers from,Europe,America and south Asia,supplying obsolete and hard-to-find components to meet their specific needs.

With the principle of “Quality Parts,Customers Priority,Honest Operation,and Considerate Service”,our business mainly focus on the distribution of electronic components. Line cards we deal with include Microchip,ALPS,ROHM,Xilinx,Pulse,ON,Everlight and Freescale. Main products comprise IC,Modules,Potentiometer,IC Socket,Relay,Connector.Our parts cover such applications as commercial,industrial, and automotives areas.

We are looking forward to setting up business relationship with you and hope to provide you with the best service and solution. Let us make a better world for our industry!



## Contact us

Tel: +86-755-8981 8866 Fax: +86-755-8427 6832

Email & Skype: info@chipsmall.com Web: www.chipsmall.com

Address: A1208, Overseas Decoration Building, #122 Zhenhua RD., Futian, Shenzhen, China



# JST

Hand crimping tool  
Type: WC-110

## Features

Parallel action  
operation

Ratchet release

Easy readjustment  
of load

Contact locator with  
insulation-stop

Precisely ground  
profiles

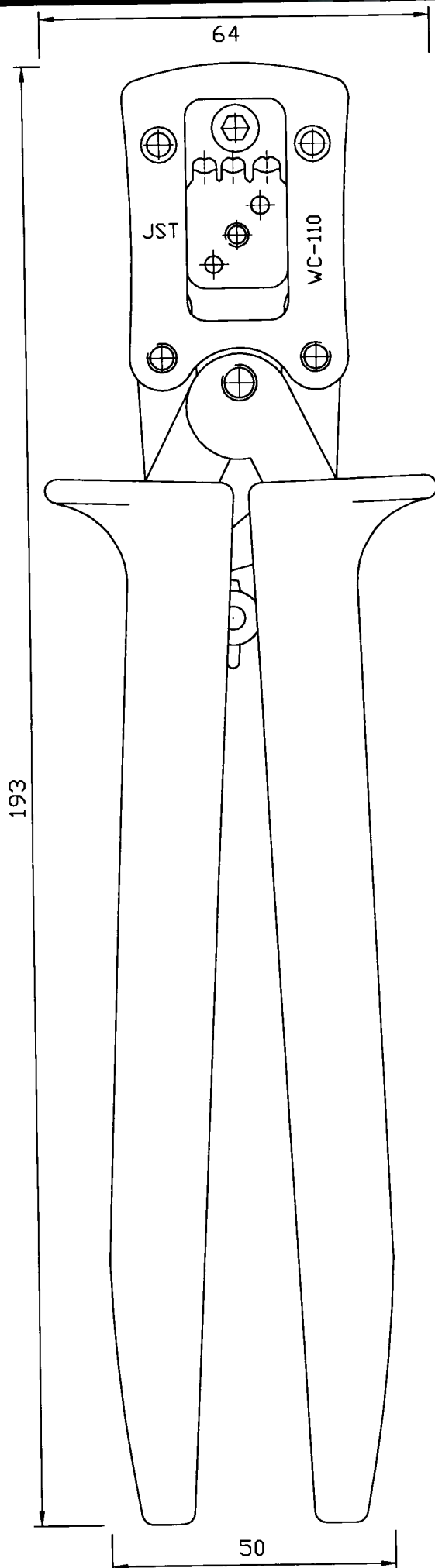
Ergonomic soft grips  
colour: green

Fully recyclable

Applicable terminal:  
( )XH-001T-P0.6

Cross section range:  
Profile 1: 28 AWG/26 AWG  
Profile 2: 24 AWG  
Profile 3: 22 AWG

Crimp height specification  
28 AWG - 0.60 - 0.65mm  
26 AWG - 0.65mm  
24 AWG - 0.70mm  
22 AWG - 0.75mm



# OPERATION INSTRUCTIONS

1. Open flap locator and insert contact up to stop.

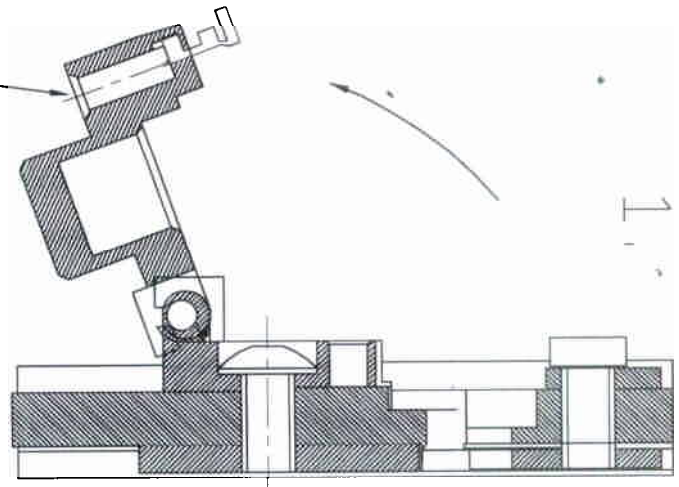
2. Close flap locator.

3. Close handtool until first ratchet.

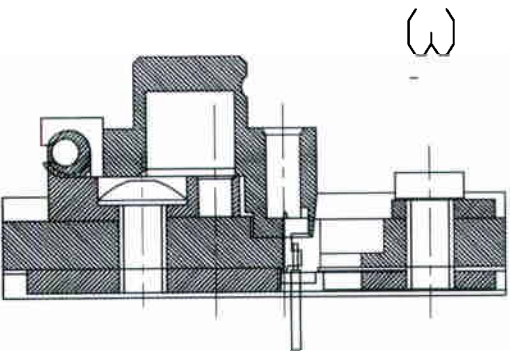
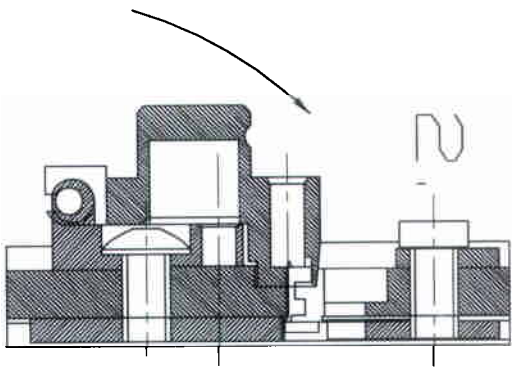
4. Insert wire up to stop.

5. Close handtool until the ratchet releases.

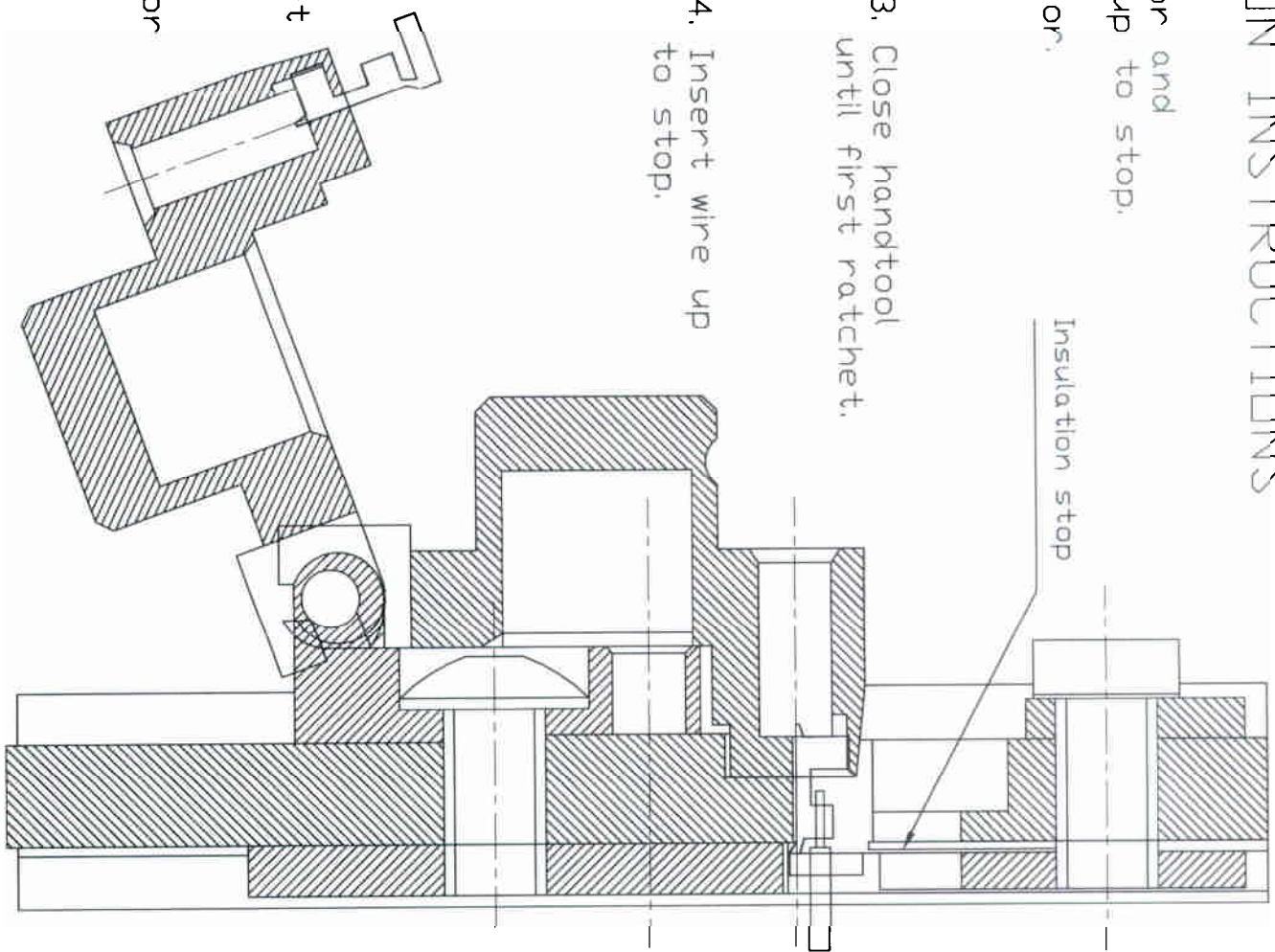
6. Open flap locator and carefully remove the wire.



Flap locator



3



Insulation stop