



Chipsmall Limited consists of a professional team with an average of over 10 year of expertise in the distribution of electronic components. Based in Hongkong, we have already established firm and mutual-benefit business relationships with customers from,Europe,America and south Asia,supplying obsolete and hard-to-find components to meet their specific needs.

With the principle of “Quality Parts,Customers Priority,Honest Operation,and Considerate Service”,our business mainly focus on the distribution of electronic components. Line cards we deal with include Microchip,ALPS,ROHM,Xilinx,Pulse,ON,Everlight and Freescale. Main products comprise IC,Modules,Potentiometer,IC Socket,Relay,Connector.Our parts cover such applications as commercial,industrial, and automotives areas.

We are looking forward to setting up business relationship with you and hope to provide you with the best service and solution. Let us make a better world for our industry!



Contact us

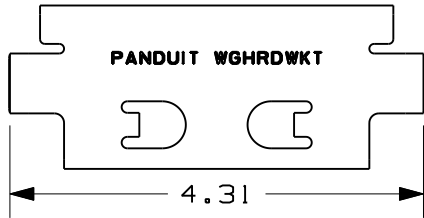
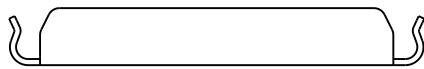
Tel: +86-755-8981 8866 Fax: +86-755-8427 6832

Email & Skype: info@chipsmall.com Web: www.chipsmall.com

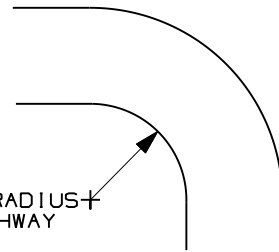
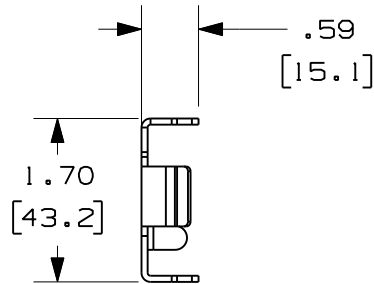
Address: A1208, Overseas Decoration Building, #122 Zhenhua RD., Futian, Shenzhen, China



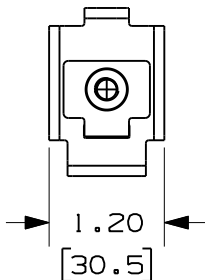
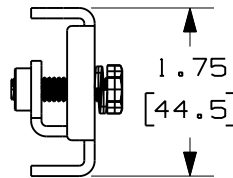
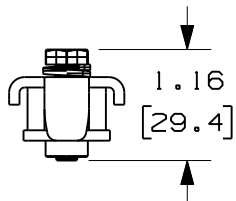
THIS COPY IS PROVIDED ON A RESTRICTED BASIS AND IS NOT TO BE USED IN ANY WAY DETRIMENTAL TO THE INTERESTS OF PANDUIT CORP.



STRAP BRACKET



INSIDE RADIUS OF PATHWAY



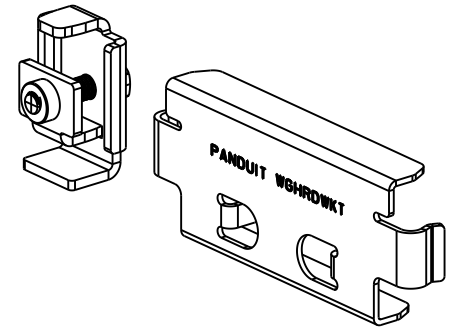
HARDWARE CLIP ASSEMBLY

PANDUIT PART NUMBER	WEIGHT
WGHRDWKT	.29 LBS (133 g)

NOTES

- SEE CURRENT CATALOG FOR PART NUMBER DESIGNATION FOR TYPE AND COLOR.
- WYR-GRID HARDWARE KITS ARE USED WITH WYR-GRID PATHWAYS TO MAKE A SWEEPING RADIUS OF THE SIZE SHOWN IN THE TABLE.
- EACH PACKAGE CONSISTS OF:
(1) WYR-GRID STRAP BRACKET
(1) WYR-GRID HARDWARE CLIP ASSEMBLY
- DIMENSIONS IN PARENTHESES ARE METRIC

PATHWAY WIDTH	NUMBER OF WGHRDWKT NEEDED FOR A 90° BEND	INSIDE RADIUS OF PATHWAY CURVATURE
12"	6	15.8"
18"	9	24.4"
24"	12	33.4"
30"	15	41.5"



CAD FILENAME/LAYERS 09D017ZD_DC WGHRDWKT/01A

PANDUIT CORP. TINLEY PARK, ILLINOIS
WYR-GRID SWEEPING RADIUS
HARDWARE KIT
CUSTOMER DRAWING

UNLESS OTHERWISE SPECIFIED,
DIMENSIONAL TOLERANCES ARE:
(.X) ± (.XXX) ±
(.XX) ± .05 (1.3) ANGLES ± 5°

UNLESS OTHERWISE SPECIFIED,
ALL DIMENSIONS ARE GIVEN
IN INCHES, THIRD ANGLE PROJECTION.

DRAWN BY
ERK

MAT'L:

SEE NOTES
ABOVE

SCALE
N/A

R 02-25-11 ERK DWW DRAWING RELEASED

DATE
02-25-11

DRAWING NO.

09D017ZD-DC

DWG
A
SIZE

REV	DATE	BY	CHK	DESCRIPTION	ECN	CHK	CUST	SUP
R	02-25-11	ERK	DWW	DRAWING RELEASED	-----			