



Chipsmall Limited consists of a professional team with an average of over 10 year of expertise in the distribution of electronic components. Based in Hongkong, we have already established firm and mutual-benefit business relationships with customers from,Europe,America and south Asia,supplying obsolete and hard-to-find components to meet their specific needs.

With the principle of “Quality Parts,Customers Priority,Honest Operation,and Considerate Service”,our business mainly focus on the distribution of electronic components. Line cards we deal with include Microchip,ALPS,ROHM,Xilinx,Pulse,ON,Everlight and Freescale. Main products comprise IC,Modules,Potentiometer,IC Socket,Relay,Connector.Our parts cover such applications as commercial,industrial, and automotives areas.

We are looking forward to setting up business relationship with you and hope to provide you with the best service and solution. Let us make a better world for our industry!



## Contact us

Tel: +86-755-8981 8866 Fax: +86-755-8427 6832

Email & Skype: info@chipsmall.com Web: www.chipsmall.com

Address: A1208, Overseas Decoration Building, #122 Zhenhua RD., Futian, Shenzhen, China



# wiSTAR™ Occupancy Sensor Ceiling Mounted

WIRELESS LIGHTING CONTROLS

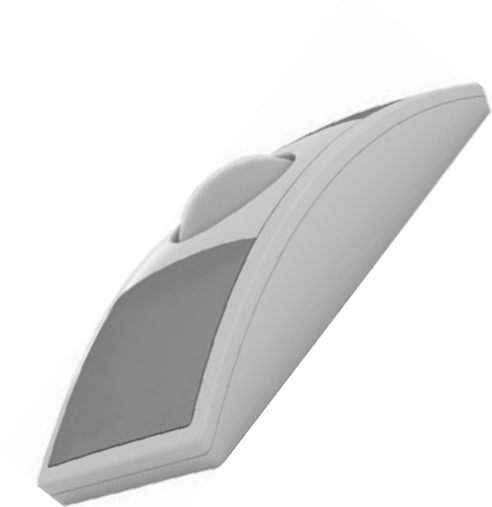


### PROJECT INFORMATION

Project Name \_\_\_\_\_

Catalog No. \_\_\_\_\_ Date \_\_\_\_\_

# wiSTAR™



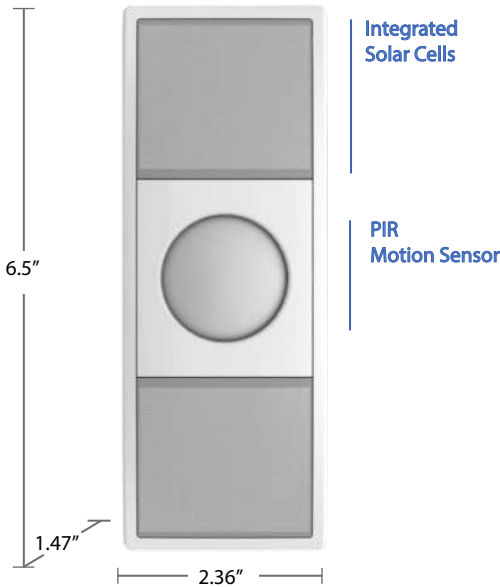
WIS-OSC

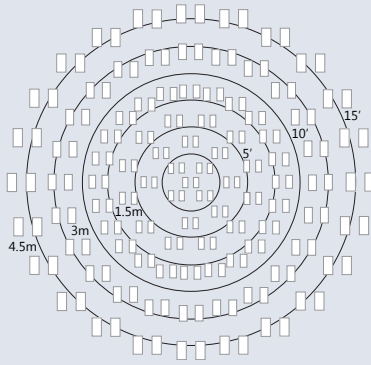
Saving energy without sacrificing comfort can be effortless with occupancy based controls. Hubbell Controls' *wiSTAR* Ceiling Mounted Occupancy Sensor enables a new level of energy saving control for rooms, hallways and other common areas. The occupancy sensor uses radio frequency technology to communicate wirelessly with other *wiSTAR* devices to turn off lights and electrical loads when a space has been unoccupied for a set period of time.

Because the sensor is wireless there is no need to run additional wiring and installation can be completed in a matter of minutes. The sensor is self-powered by harvesting light energy, eliminating the need for periodic battery changes. The clean, contemporary styling makes the sensor an attractive addition to any décor.

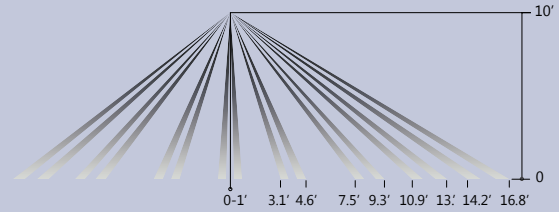
### PRODUCT FEATURES

- Sends messages to other devices when motion is detected
- Harvests light energy to power the sensor
- Mounts easily on any ceiling or material
- Works with other sensors for enhanced occupancy tracking
- Built-in tests to confirm operation
- Alternate power supply options for extreme low light conditions
- Five-year limited warranty





Top view of sensor coverage based on 10ft mounting height



Side view of sensor coverage based on 10ft mounting height

## General Specifications

Power Supply	Indoor light energy harvesting (Optional supplemental battery or 2-wire connector for external power or remote solar cell)
RF Communications	EnOcean 902 MHz
Transmission Range	80ft. (25m)
Motion Detection Range	40ft. (25m) diameter
Minimum Operating Light	50 lux (for auto-off only)
Startup Charge Times (from empty)	Linking = 4 min @ 100 lux 1.5 min @ 200 lux Motion Transmission = 6 min @ 100 lux 3.5 min @ 200 lux Note: Bright light or battery can be temporarily used to shorten initial startup charge times
Charge Time to Full	9 hrs @ 200 lux
Sustaining Charge Time	3 hours per 24 hours @ 200 lux
Motion Transmission Interval	60 - 300 seconds (based on real-time charge rate) 60 sec @ 200 lux - 300 sec @ 50 lux
Heartbeat Transmission Interval	120 - 600 seconds (based on real-time charge rate) 120 sec @ 200 lux - 600 sec @ 50 lux
Operating Life in Darkness	48 hours (after full charge)
EnOcean Equipment Profile (EEP)	A05-07-02
Dimensions	6.5" H x 2.36" W x 1.47" D (160mm x 60mm x 37mm)
Mounting Height	7 - 10 feet (recommended)
Agency Compliance	FCC: SZV-EOSC05 IC: 5713-EOSC05
Warranty	Five-year limited
Interoperable Products / EEPs (EnOcean Equipment Profiles)	Product Name (EEP #) Rocker Pad Switch (F6-02-02) Key Card Switch (F6-04-01) Window handle (F6-10-00) 1BS Single Input Contact (D5-00-01) Temperature Sensor, 0 - 40° C (A5-02-05) Occupancy Sensor (A5-07-01) Contact, single input (A5-30-01) Central Gateway (A5-38-08)

## Ordering Information

WIS-OSC-WH

MODEL

WIS-OSC-WH

wiSTAR™ Occupancy Sensor - Ceiling Mount,  
902MHz, White



**HUBBELL**  
Control Solutions

9601 Dessau Road | Building One | Austin, Texas 78754 | 512-450-1100 | 512-450-1215 fax | www.hubbell-automation.com

4303A 2.5.2016