



Chipsmall Limited consists of a professional team with an average of over 10 year of expertise in the distribution of electronic components. Based in Hongkong, we have already established firm and mutual-benefit business relationships with customers from,Europe,America and south Asia,supplying obsolete and hard-to-find components to meet their specific needs.

With the principle of “Quality Parts,Customers Priority,Honest Operation,and Considerate Service”,our business mainly focus on the distribution of electronic components. Line cards we deal with include Microchip,ALPS,ROHM,Xilinx,Pulse,ON,Everlight and Freescale. Main products comprise IC,Modules,Potentiometer,IC Socket,Relay,Connector.Our parts cover such applications as commercial,industrial, and automotives areas.

We are looking forward to setting up business relationship with you and hope to provide you with the best service and solution. Let us make a better world for our industry!



## Contact us

Tel: +86-755-8981 8866 Fax: +86-755-8427 6832

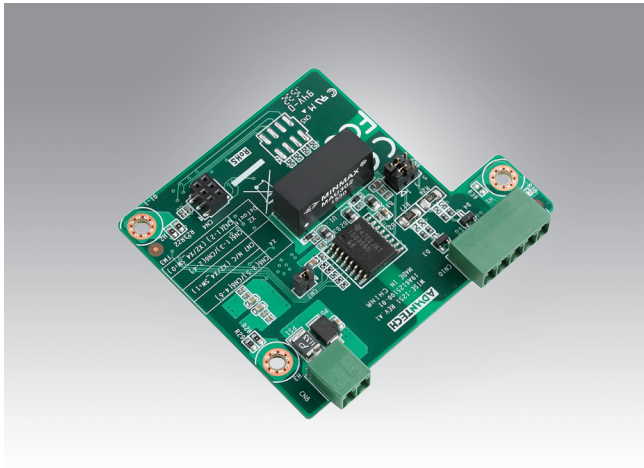
Email & Skype: info@chipsmall.com Web: www.chipsmall.com

Address: A1208, Overseas Decoration Building, #122 Zhenhua RD., Futian, Shenzhen, China



# WISE-1251

RS422/485 I/O Board



CE FCC 

## Specifications

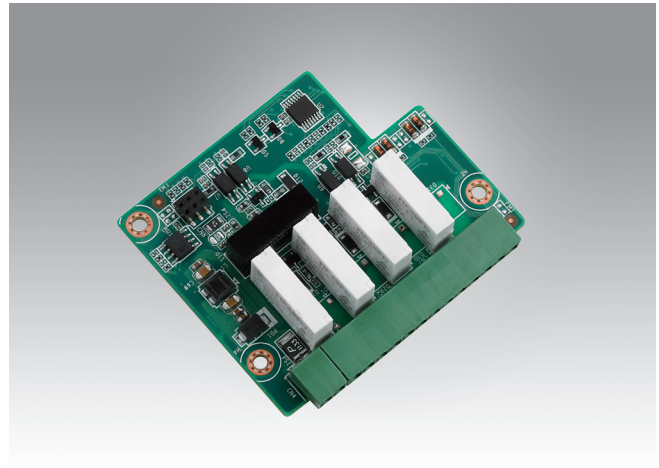
Input	RS-485 (4-wire) or RS-422 (2-wire)
Output	RS-485 (4-wire) or RS-422 (2-wire)
Interface Connectors	2 x plug-in terminal blocks (RS422/485)
Isolation Protection	3500 V <sub>DC</sub>
Speed Modes (bps)	1,200, 2,400, 4,800, 9,600, 19.2 k, 38.4 k, 57.6 k, 115.2 k,
EEPROM	32KB
Power Requirement	3.3V & 5V DC
Operating temperature	-40 to 85° C
Storage Temperature	-40 ~ 85° C
Operating Humidity	5 ~ 95% RH

## Ordering Information

P/N	Description
WISE-1251W0-0000E	RS422/485 I/O node board
WISE-1021WR-1100E	WSN IP Node, IEEE.802.15.4e Linear/Dust Mesh network with TI MSP430 MCU WISE-DB1021

# WISE-1252

4-ch Relay and DIO I/O Board



CE FCC 

## Specifications

Relay output	4ch
Contact Rating (Resistive)	250V <sub>AC</sub> @ 0.3A, 30V <sub>DC</sub> @ 2A
Isolation Protection	3500 V <sub>DC</sub>
Initial Insulation	1 G $\Omega$ min. at 500 V <sub>DC</sub> Resistance Relay off Time 2 ms (Typical)
Relay on Time	3 ms (Typical)
Maximum Operating Speed	20 operations/min (at related load)
Digital input	4-ch
EEPROM	32KB
Power Requirement	3.3V & 5V DC
Operating temperature	-40 to 85° C
Storage Temperature	-40 ~ 85° C
Operating Humidity	5 ~ 95% RH

## Ordering Information

P/N	Description
WISE-1252W0-0000E	4-ch Relay and 4-ch DIO I/O node board
WISE-1021WR-1100E	WSN IP Node, IEEE.802.15.4e Linear/Dust Mesh network with TI MSP430 MCU WISE-DB1021