



Chipsmall Limited consists of a professional team with an average of over 10 year of expertise in the distribution of electronic components. Based in Hongkong, we have already established firm and mutual-benefit business relationships with customers from,Europe,America and south Asia,supplying obsolete and hard-to-find components to meet their specific needs.

With the principle of “Quality Parts,Customers Priority,Honest Operation,and Considerate Service”,our business mainly focus on the distribution of electronic components. Line cards we deal with include Microchip,ALPS,ROHM,Xilinx,Pulse,ON,Everlight and Freescale. Main products comprise IC,Modules,Potentiometer,IC Socket,Relay,Connector.Our parts cover such applications as commercial,industrial, and automotives areas.

We are looking forward to setting up business relationship with you and hope to provide you with the best service and solution. Let us make a better world for our industry!



Contact us

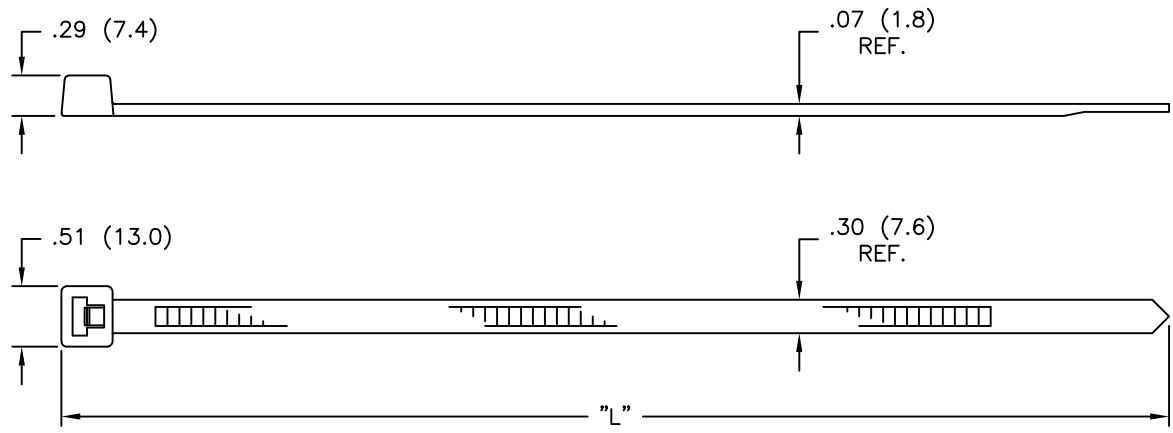
Tel: +86-755-8981 8866 Fax: +86-755-8427 6832

Email & Skype: info@chipsmall.com Web: www.chipsmall.com

Address: A1208, Overseas Decoration Building, #122 Zhenhua RD., Futian, Shenzhen, China



NYLON 6/6 (RMS-01) COLOR: NATURAL PART NO.	UV STABILIZED (RMS-46) COLOR: BLACK PART NO.	MAX. BUNDLE DIA.	LENGTH "L" APPROX.	NYLON 6/6 (RMS-73) LOW TEMPERATURE COLOR: BLACK TO ORDER ADD "-ST" TO P/N	NYLON 6/6 HEAT STABILIZED (RMS-47) UL 94-V2 COLOR: BLACK TO ORDER ADD "-HS" TO P/N
WIT-120S	WIT-120S-UVB	2.00 (50.8)	8-1/2 (215.9)	SPECIAL	SPECIAL
WIT-120R	WIT-120R-UVB	4.25 (108.0)	15-1/16 (382.6)		STANDARD
WIT-120L	WIT-120L-UVB	6.37 (161.9)	21-1/4 (539.8)		SPECIAL



NOTES:

1. MIN. LOOP TENSILE: 120 lbs
2. COLORS: GREEN (-GN), BLUE (-BL), YELLOW (-YL), RED (-RD), NEON-GREEN (-NGN), NEON-YELLOW (-NYL), NEON-PINK (-NPK) AND NEON-ORANGE (-NOR), AVAILABLE BY SPECIAL ORDER ONLY. TO ORDER, ADD COLOR SUFFIX TO PART NO.
3. MATERIAL: NYLON 6/6 UL94-V0 (RMS-75), COLOR: NATURAL. AVAILABLE BY SPECIAL ORDER ONLY, TO ORDER, ADD "-VO" TO PART NO.

H	SEE CO 200134 FOR CHANGES	SK 02.28.08
G	SEE ECN #862 FOR CHANGES	SM 10.04.04
F	SEE ECN #738 FOR CHANGES	SM 12.02.03
E	SEE ECN #724 FOR CHANGES	SM 11.07.03
D	ADDED MAT'L INFO TO TABLE AND NOTES PER CATALOG	SM 05.07.02
C	CHANGED FILE NO. AND TITLE BLOCK	SM 06.19.01
B	UL94 VO MAT'L ADDED	J.L. 07.20.02
A	RMS-46 ADDED TO PRINT	J.L. 06.03.98
REV	DESCRIPTION	ENGR DATE

TITLE: WIT-120 SERIES				DWG IN	IN (MM)	PR
TOLERANCES UNLESS NOTED .XX=±.010 .XXX=±.005 FRAC=±1/64 ANG=±1°	FILE # WIT-120	DWN: P.B.	APP:	FINAL		PART # SEE TABLE PRINT TYPE CA
	MAT'L: SEE NOTES & TABLE	DT: 08-09-02	CHKD:			
	RE: RICHCO, INC.	RICHCO INC. ENG@RICHCO-INC.COM (773) 539-4060				