



Chipsmall Limited consists of a professional team with an average of over 10 year of expertise in the distribution of electronic components. Based in Hongkong, we have already established firm and mutual-benefit business relationships with customers from,Europe,America and south Asia,supplying obsolete and hard-to-find components to meet their specific needs.

With the principle of “Quality Parts,Customers Priority,Honest Operation,and Considerate Service”,our business mainly focus on the distribution of electronic components. Line cards we deal with include Microchip,ALPS,ROHM,Xilinx,Pulse,ON,Everlight and Freescale. Main products comprise IC,Modules,Potentiometer,IC Socket,Relay,Connector.Our parts cover such applications as commercial,industrial, and automotives areas.

We are looking forward to setting up business relationship with you and hope to provide you with the best service and solution. Let us make a better world for our industry!



## Contact us

Tel: +86-755-8981 8866 Fax: +86-755-8427 6832

Email & Skype: info@chipsmall.com Web: www.chipsmall.com

Address: A1208, Overseas Decoration Building, #122 Zhenhua RD., Futian, Shenzhen, China



# Unidirectional Back Electret Condenser Microphone Cartridge

## WM-55A103

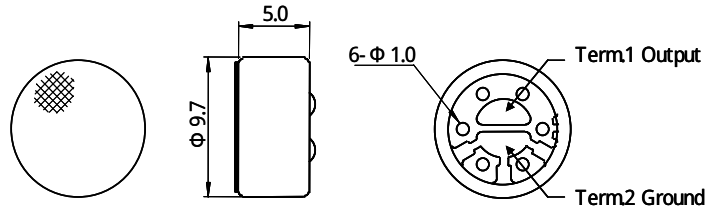
- Unidirectional microphone for general use
- Suited to Hi-Fi sound and playback systems

### ■ Appearance

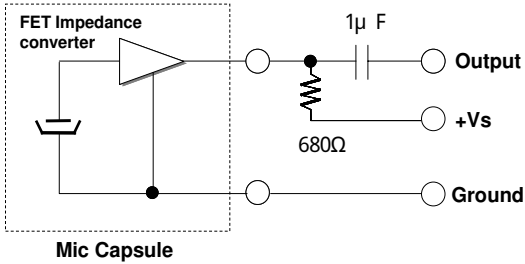


### ■ Dimensional Drawing

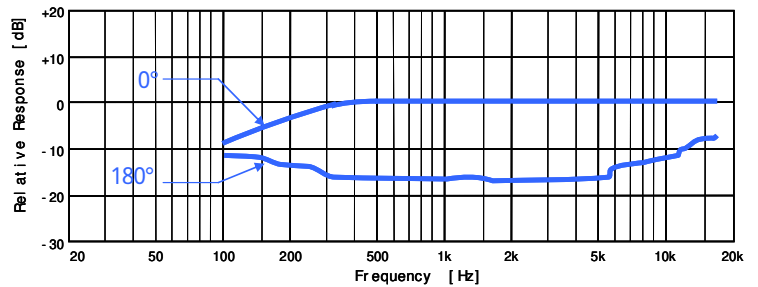
Unit : mm



### ■ Schematic Diagram



### ■ Typical Frequency Response Curve



### ■ Sensitivity

(0dB=1V/Pa, 1kHz)

Sensitivity

-47+/- 4dB

Model No.

WM-55A103

Vs=1.5V  
RL=680Ω

### Specifications

|                            |                           |
|----------------------------|---------------------------|
| Dimensions                 | 9.7 x 5.0 mm              |
| Impedance                  | Less than 680 Ω           |
| Frequency                  | Unidirectional (Cardioid) |
| Max operation voltage      | 100- 12,000Hz             |
| Standard operation voltage | 10V                       |
| Current consumption        | 1.5V                      |
| Sensitivity reduction      | Max 0.5mA                 |
| S/N ratio                  | Within - 3dB at 1V        |
|                            | More than 60dB            |

Specifications are subject to change without notice.