



Chipsmall Limited consists of a professional team with an average of over 10 year of expertise in the distribution of electronic components. Based in Hongkong, we have already established firm and mutual-benefit business relationships with customers from,Europe,America and south Asia,supplying obsolete and hard-to-find components to meet their specific needs.

With the principle of “Quality Parts,Customers Priority,Honest Operation,and Considerate Service”,our business mainly focus on the distribution of electronic components. Line cards we deal with include Microchip,ALPS,ROHM,Xilinx,Pulse,ON,Everlight and Freescale. Main products comprise IC,Modules,Potentiometer,IC Socket,Relay,Connector.Our parts cover such applications as commercial,industrial, and automotives areas.

We are looking forward to setting up business relationship with you and hope to provide you with the best service and solution. Let us make a better world for our industry!



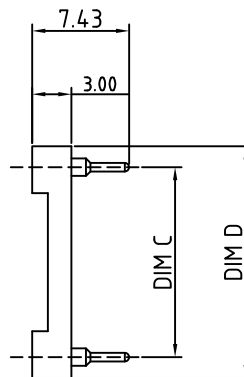
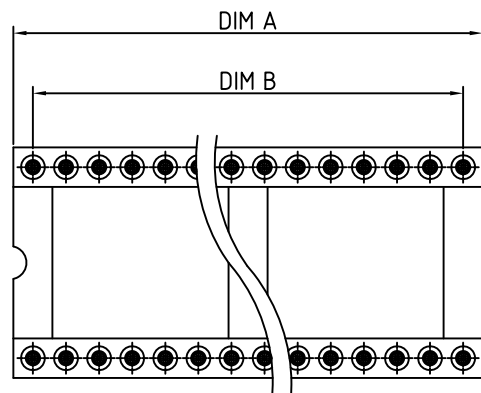
Contact us

Tel: +86-755-8981 8866 Fax: +86-755-8427 6832

Email & Skype: info@chipsmall.com Web: www.chipsmall.com

Address: A1208, Overseas Decoration Building, #122 Zhenhua RD., Futian, Shenzhen, China





Technical Data

Material:

Pin (outer sleeve): Brass, machined, CuZn38Pb2
 Clip (contact 4 finger): Beryllium copper, heat treated or PHBZ
 Plating (outer sleeve): Tin plated: 2um/80u"nickel, 5um/200u"Tin
 Plating clip (contact): 2um/80 u"nickel, gold Flash

Electrical

Current rating: 3 Amps/contact max.
 Contact resistance: 4m /contact
 Rated voltage: 100 VRMS/150VDC

Mechanical

Operating temperature: -40° C to +105° C
 (Continuous) -67° F to +105° F

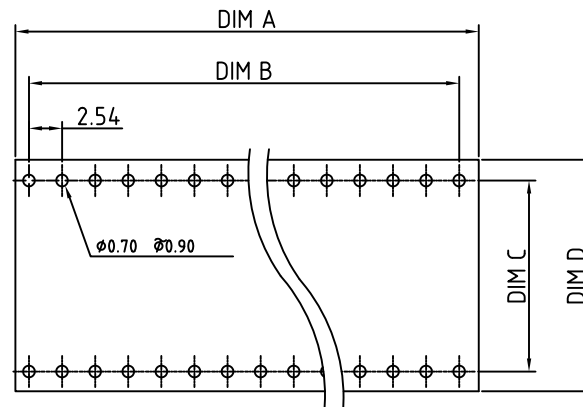
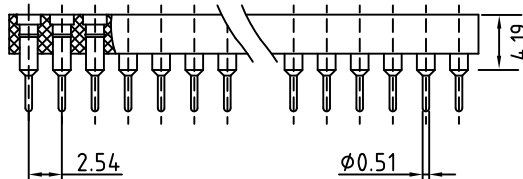
Average insertion force with steel pin of: $\pm 0.43\text{mm}/0.017'' \pm 250\text{g}$
 Average withdrawal force with steel pin of: $\pm 0.43\text{mm}/0.017'' \pm 50\text{g}$
 Mechanical life: min. 200 Cycles

Environmental data

Solderability (IEC 60068-2-20. Ta): 235° C, 2s
 Resistance to soldering heat (IEC 60068-2-20. Tb):
 -Through hole mount components: 260° C, 10s

RoHS Compliant

- +Biodegradable Carrier
- +Environmentally Friendly
- +Auto Insertable
- +Dissolves in Water: The Wash-Away socket carrier completely dissolves in water as the board is being washed in any of the standard board washing systems.



P.C.B. LAYOUT

*Part Number: Add 1 for .3 spacing on 24(1) and 28(1) contacts

P/N	Contact	Dim A	Dim B	Dim C	Dim D	P/N	Contact	Dim A	Dim B	Dim C	Dim D
WMS-060Z	06	7.62	5.08	7.62	10.16	WMS-240Z	24	30.48	27.94	15.24	17.78
WMS-080Z	08	10.16	7.62	7.62	10.16	WMS-280Z	28	35.56	33.02	15.24	17.78
WMS-100Z	10	12.70	10.16	7.62	10.16	WMS-320Z	32	40.64	38.10	15.24	17.78
WMS-140Z	14	17.78	15.24	7.62	10.16	WMS-400Z	40	50.80	48.26	15.24	17.78
WMS-160Z	16	20.32	17.78	7.62	10.16	WMS-420Z	42	53.34	50.80	15.24	17.78
WMS-180Z	18	22.86	20.32	7.62	10.16	WMS-480Z	48	60.96	58.42	15.24	17.78
WMS-200Z	20	25.40	22.86	7.62	10.16	WMS-640Z	64	81.28	78.74	22.86	25.40
WMS-2410Z	24	30.48	27.94	7.62	10.16						
WMS-2810Z	28	35.56	33.02	7.62	10.16						

THESE DRAWINGS AND SPECIFICATIONS ARE THE PROPERTY OF ON-SHORE TECHNOLOGY, INC. AND SHALL NOT BE REPRODUCED, COPIED OR USED IN ANY MANNER WITHOUT THE PRIOR WRITTEN CONSENT OF ON-SHORE TECHNOLOGY, INC. PATENTED

OST		ON-SHORE TECHNOLOGY, INC.			
TITLE		Wash Away IC Socket			
PART NO.	WMS-XX0Z	DWG NO.	WMS-0Z.dwg		
APPROVED	CHECKED	DESIGNED	DRAWN	CUST NO.	Tolerance
		Aaron 2006.01.12	Aaron 2006.01.12		X. ±0.50 X.X ±0.30 X.XX ±0.10 X* ±1"
				SHEET: 01/01	REV: D