



Chipsmall Limited consists of a professional team with an average of over 10 year of expertise in the distribution of electronic components. Based in Hongkong, we have already established firm and mutual-benefit business relationships with customers from,Europe,America and south Asia,supplying obsolete and hard-to-find components to meet their specific needs.

With the principle of “Quality Parts,Customers Priority,Honest Operation,and Considerate Service”,our business mainly focus on the distribution of electronic components. Line cards we deal with include Microchip,ALPS,ROHM,Xilinx,Pulse,ON,Everlight and Freescale. Main products comprise IC,Modules,Potentiometer,IC Socket,Relay,Connector.Our parts cover such applications as commercial,industrial, and automotives areas.

We are looking forward to setting up business relationship with you and hope to provide you with the best service and solution. Let us make a better world for our industry!



## Contact us

Tel: +86-755-8981 8866 Fax: +86-755-8427 6832

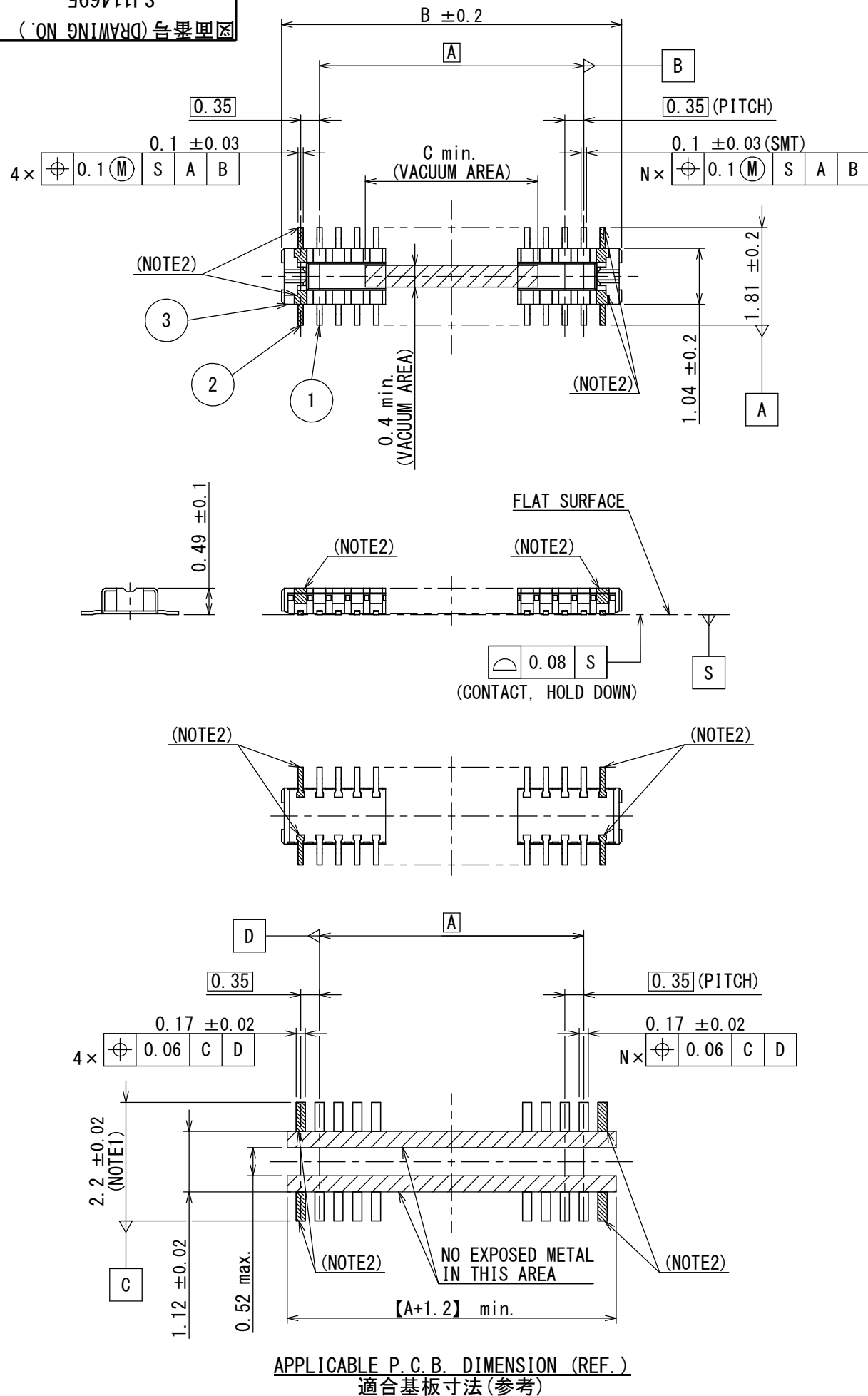
Email & Skype: [info@chipsmall.com](mailto:info@chipsmall.com) Web: [www.chipsmall.com](http://www.chipsmall.com)

Address: A1208, Overseas Decoration Building, #122 Zhenhua RD., Futian, Shenzhen, China

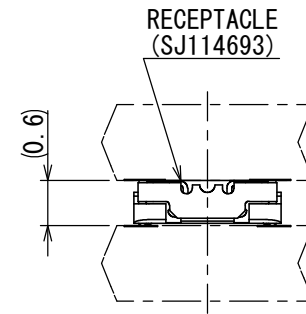


DCF-G-212H(12.08)

SJ114695  
(ON 図面番号)



版数 VER.	年月日 DATE	CN NO.	変更内容 DESCRIPTION	製図 DR.	担当 CHK.	査閲 APPD.	承認 APPD.
2	25/SEP/2014	011012	ADDED ITEM	—	Y. TAKENAGA	T. NISHIMURA	H. OBIKANE
3	16/JAN/2015	012068	ADDED ITEM	—	Y. TAKENAGA	T. NISHIMURA	H. OBIKANE
4	24/FEB/2015	012447	ADDED ITEM	—	Y. TAKENAGA	T. NISHIMURA	H. OBIKANE



MATED CONDITION (REF.)  
嵌合状態図 (参考)

TABLE 1

DIMENSIONS 寸法	A	B	C
10	2.10	2.81	1.0
20	3.15	4.56	2.0
22	3.50	4.91	2.0
24	3.85	5.26	2.0
30	4.90	6.31	5.0
34	5.60	7.01	5.0
40	6.65	8.06	5.0
42	7.00	8.41	5.0
46	7.70	9.11	5.0
54	9.10	10.51	5.0

NOTE1. IT SHOULD BE  $2.8 \pm 0.02$  IF REPAIRING IS NEEDED.  
NOTE2. MECHANICAL HOLD DOWNS IN FOUR CORNERS; NOT FOR ELECTRICAL CONNECTION.  
X PINS CONNECTOR HAS X+4 PINS CONTACTS. e.g. 42 PINS CONNECTOR HAS 46 PINS.

注1. リペアが必要な場合、この寸法は  $2.8 \pm 0.02$  を推奨する。  
注2. 四隅はホールドダウンである (電気的接続不可)。  
例) 42 (X) 芯のコネクタは46 (X+4) 芯分のSMT端子を有する。

3	INSULATOR インシュレータ	1	HEAT RESISTING PLASTICS 耐熱プラスチック	—	—
2	HOLD DOWN ホールドダウン	4	COPPER ALLOY 銅合金	GOLD PLATING OVER NICKEL Ni上Auめっき	TERMINAL AREA: GOLD ( $0.05 \mu\text{m}$ MIN)
1	CONTACT コンタクト	N	COPPER ALLOY 銅合金	GOLD PLATING OVER NICKEL Ni上Auめっき	CONTACT AREA: GOLD ( $0.1 \mu\text{m}$ MIN) TERMINAL AREA: GOLD ( $0.05 \mu\text{m}$ MIN)
符号 NO.	名称 DESCRIPTION	個数 QTY.	材料 MATERIAL	仕上 FINISH	備考 REMARKS

仕様書 (SPECIFICATION) JACS-11021		第1版 (ORIGINAL DATE) 31/MAR/2014		尺度 (SCALE) 10:1		シリーズ (SERIES) WP21		日本航空電子工業株式会社	
一般公差 (GENERAL TOLERANCE)		製図 DR. T. KATAYANAGI		名称 (TITLE) WP21-P***VA1 (PLUG CONNECTOR)		JAE JAPAN AVIATION ELECTRONICS INDUSTRY, LTD.		図面番号 (DRAWING NO.) SJ114695	
寸法 (DIMENSION)		角度 (ANGLES)		質量 (MASS)		図面番号 (DRAWING NO.) SJ114695		版数 (VER.) 4	
単位 (UNIT) : mm		承認 APPD. H. OBIKANE		—		—		—	