



Chipsmall Limited consists of a professional team with an average of over 10 year of expertise in the distribution of electronic components. Based in Hongkong, we have already established firm and mutual-benefit business relationships with customers from,Europe,America and south Asia,supplying obsolete and hard-to-find components to meet their specific needs.

With the principle of "Quality Parts,Customers Priority,Honest Operation,and Considerate Service",our business mainly focus on the distribution of electronic components. Line cards we deal with include Microchip,ALPS,ROHM,Xilinx,Pulse,ON,Everlight and Freescale. Main products comprise IC,Modules,Potentiometer,IC Socket,Relay,Connector.Our parts cover such applications as commercial,industrial, and automotives areas.

We are looking forward to setting up business relationship with you and hope to provide you with the best service and solution. Let us make a better world for our industry!



## Contact us

Tel: +86-755-8981 8866 Fax: +86-755-8427 6832

Email & Skype: [info@chipsmall.com](mailto:info@chipsmall.com) Web: [www.chipsmall.com](http://www.chipsmall.com)

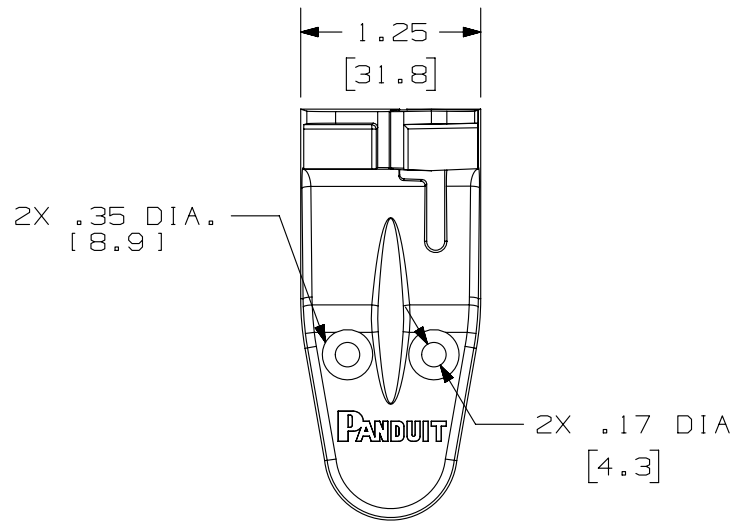
Address: A1208, Overseas Decoration Building, #122 Zhenhua RD., Futian, Shenzhen, China



2

1

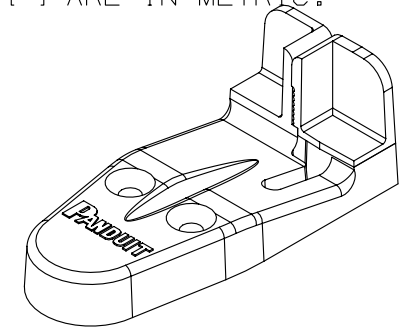
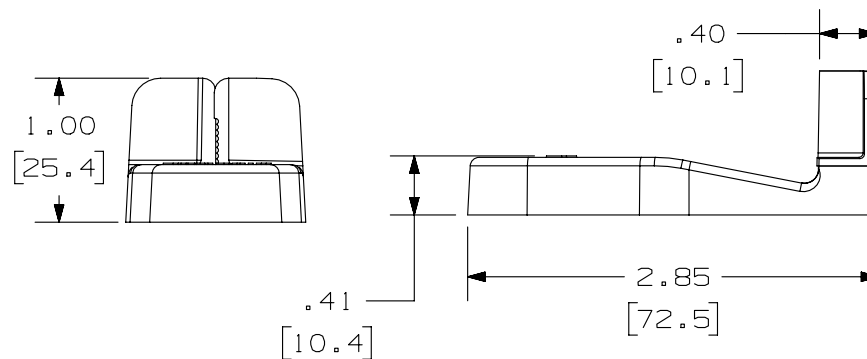
THIS COPY IS PROVIDED ON A RESTRICTED BASIS AND IS NOT TO BE USED IN ANY WAY DETRIMENTAL TO THE INTERESTS OF PANDUIT CORP.



PANDUIT P/N	WEIGHT
WPT-8	.26 LB/10 PCS. (118 G/10 PCS.)

#### NOTES:

- SEE CURRENT CATALOG FOR ADDITIONAL PART NUMBER SUFFIXES TO INDICATE PACKAGE QUANTITY.
- SEE CATALOG FOR COMPLETE LIST OF PARTS APPLICABLE FOR USE WITH THIS PART.
- USED TO PREPARE 24 AWG COPPER CONDUCTORS FOR PLUG TERMINATION.
- THIS TOOL IS USED WITH THE MP588-L OR MP588-M. USED TO HELP HOLD THE WIRES FOR EASIER FEED THROUGH INTO MODULAR PLUG.
- DIMENSIONS IN [ ] ARE IN METRIC.



PART NUMBER		WPT-8	
TITLE			
WIRE PREPERATION TOOL			
CUSTOMER DRAWING			
ITEM REVISION NAME		D35558BH/00	
DATASET FILE NAME		D35558BH_DC-HTDRAFT/00A	
UNLESS OTHERWISE SPECIFIED, DIMENSIONAL TOLERANCES ARE: IN [ mm ]		<b>PANDUIT</b>  MATERIAL:  ABS	
.X ± .XX ± .03 [ .8 ] .XXX ± .010 [ .3 ] ANGLES ±			
THIRD ANGLE PROJECTION		DRAWING NUMBER: 35558-08	
DRAWN BY	DATE	CHK	SCALE
JBA	7-03-97	CEF	NONE
SHT 1 OF 1			SIZE A

REV	DATE	BY	CHK	APR	DESCRIPTION	ECN
1	5/21/14	JSP	REFR	EJH	A. REVISED DRAWING TITLE BLOCK.	35558-08
R	7-03-97	JBA	CEF	CEF	RELEASED TO PRODUCTION	35558-08

2

1

D10100DA/14