



Chipsmall Limited consists of a professional team with an average of over 10 year of expertise in the distribution of electronic components. Based in Hongkong, we have already established firm and mutual-benefit business relationships with customers from,Europe,America and south Asia,supplying obsolete and hard-to-find components to meet their specific needs.

With the principle of “Quality Parts,Customers Priority,Honest Operation,and Considerate Service”,our business mainly focus on the distribution of electronic components. Line cards we deal with include Microchip,ALPS,ROHM,Xilinx,Pulse,ON,Everlight and Freescale. Main products comprise IC,Modules,Potentiometer,IC Socket,Relay,Connector.Our parts cover such applications as commercial,industrial, and automotives areas.

We are looking forward to setting up business relationship with you and hope to provide you with the best service and solution. Let us make a better world for our industry!



## Contact us

Tel: +86-755-8981 8866 Fax: +86-755-8427 6832

Email & Skype: info@chipsmall.com Web: www.chipsmall.com

Address: A1208, Overseas Decoration Building, #122 Zhenhua RD., Futian, Shenzhen, China





DUAL LTE / DUAL  
WI-FI MOBILE  
ACCESS ROUTER



# DIGI TRANSPORT® WR64

High performance cellular router with dual redundant communications for complex transit and transportation systems.

Ideal for challenging transportation and mobile environments, Digi TransPort® WR64 is a dual cellular LTE-Advanced router with true enterprise class routing, security, firewall and integrated VPN. It offers a flexible interface design with an integrated Wi-Fi access point, USB, serial and 4-port Ethernet switch, as well as a variety of configuration options including GNSS and Bluetooth.

Internet access for riders is managed securely and without impact to onboard bus systems. Triple carrier aggregation on each cellular interface can be combined to deliver up to 1.2 Gbps to passengers. Onboard systems retain priority and any remaining bandwidth is made available to Internet traffic.

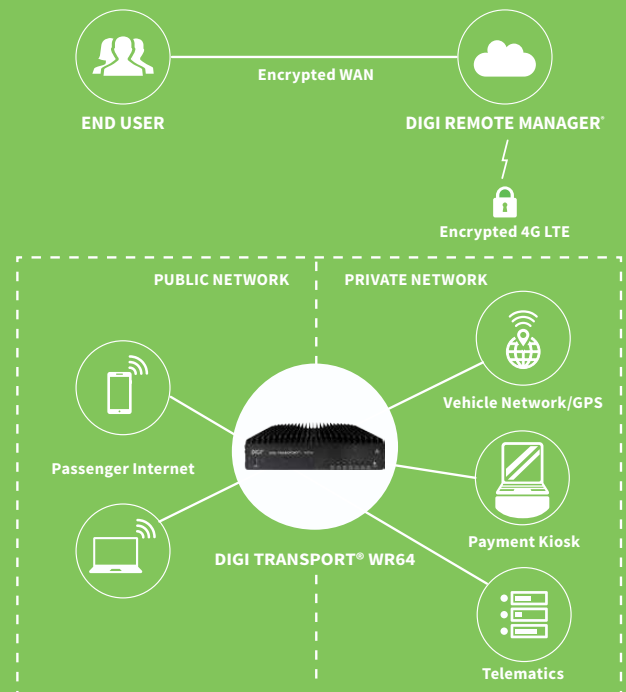
A captive portal and splash page enable term acceptance, targeted messaging and agency branding. Standard HTTP/DNS redirect can be used to block malware and unwanted content through popular 3rd party service providers or an agency server.

Reliable powering circuitry supporting 9-36VDC input with ignition sense for direct integration into vehicles power source. Dual cellular and Wi-Fi modules provide true segmented traffic flow of private and public data for fare collection, CAD/AVL data, camera log backhaul and passenger Wi-Fi access.

## FEATURES AND BENEFITS

- Segmented private vs. public data communication across dual 600 Mbps CAT 11 cellular modules
- Video and vehicle data offload over 1.7 Gbps 802.11ac Wi-Fi backhaul
- Passenger Wi-Fi over 867 Mbps 802.11ac access point
- Wired Gigabit Ethernet (4-port) for onboard systems
- Future-built with powerful quad-core 1.91GHz, 64-bit CPU
- Manage and control devices with Digi Remote Manager®, a web-based management tool for all Digi cellular routers and gateways
- Cryptographic Co-processor with Secure Key Generation and Storage

## APPLICATION EXAMPLE



## RELATED PRODUCTS



Digi TransPort®  
WR44 R



Digi TransPort®  
WR44 RR



Accessories



Digi Remote  
Manager®

## SPECIFICATIONS

## DIGI TRANSPORT® WR64

## WIRELESS INTERFACES

## WWAN\*

<b>DUAL MODULES GLOBAL LTE-ADVANCED</b>	LTE FDD : 700(B12,B13,B17, B28, B29) / 800(B20) / 850(B5, B26) / 900(B8) / 1700AWS(B4, B66) / 1800(B3) / 1900(B2, B25) / 2100(B1) / 2300(B30) / 2600(B7) LTE TDD : 2300(B40) / 2500(B41) / 2600(B38) 3G (HSPA): 850(B5), 900(B8), 1700AWS(B4), 1800(B3), 1900(B2), 2100(B1) Transfer rate (max): 600 Mbps down, 75 Mbps up per module
---	--

<b>CONNECTOR</b>	2 x 50 Ω SMA per module (Center pin: female)
------------------	--

<b>SIM SLOTS</b>	2, Mini-SIM (2FF) per module (4 total)
------------------	--

<b>SIM SECURITY</b>	SIM slot cover plate included
---------------------	-------------------------------

## WI-FI

<b>DUAL MODULES</b>	Private Backhaul: 4 x 4 MU-MIMO 5 GHz 802.11 a/n/ac Wave 2, 1.733 Gbps (max) Public Wi-Fi: 2 x 2 MIMO 2.4/5 GHz 802.11 a/b/g/n/ac, 867 Mbps (max)
---------------------	--

<b>HOTSPOT</b>	Captive portal, customizable splash page
----------------	--

<b>AUTHENTICATION</b>	Basic ToS acceptance, Enterprise RADIUS
-----------------------	---

<b>3RD PARTY SERVICES</b>	Content filtering, embedded advertising
---------------------------	---

<b>USER MANAGEMENT</b>	Per client usage limit and reporting
------------------------	--------------------------------------

<b>MODES</b>	Up to 4 Access Points and 1 Client per Wi-Fi module (8+2 total)
--------------	---

<b>SECURITY</b>	None, WPA/WPA2-Personal, WPA/WPA2-Enterprise
-----------------	--

<b>CONNECTORS</b>	Private Backhaul: 4 x 50 Ω RP-SMA (Center pin: male) Public Wi-Fi: 2 x 50 Ω RP-SMA (Center pin: male)
-------------------	--

## GPS

<b>TECHNOLOGY</b>	Multi-constellation: Concurrent reception of up to 2 GNSS (GPS, Galileo, GLONASS, BeiDou)
-------------------	---

<b>SENSITIVITY</b>	-163 dB
--------------------	---------

<b>PROTOCOL</b>	NMEA 0183 V2.3 sentence output
-----------------	--------------------------------

<b>CONNECTOR</b>	1 x 50 Ω SMA (Center pin: female); +3.3VDC active antenna drive
------------------	---

## WIRED INTERFACES

## SERIAL

<b>PORTS / CONNECTOR</b>	1 RS-232; DB-9 male
--------------------------	---------------------

## ETHERNET

<b>PORTS / CONNECTOR</b>	4; RJ-45
--------------------------	----------

<b>STANDARD</b>	IEEE 802.3; 10/100/1000 Base-T
-----------------	--------------------------------

## USB

<b>PORTS</b>	3
--------------	---

<b>STANDARD</b>	USB 3.0 , Type A
-----------------	------------------

## SOFTWARE

<b>PROTOCOLS</b>	IPv4/IPv6, DMNR, QoS, NTP, Dynamic DNS, Syslog
------------------	--

<b>SECURITY</b>	Stateful firewall, IPsec VPN, PKI, RADIUS, Mobile IKE, SHA-2
-----------------	--

<b>REMOTE MANAGEMENT</b>	Digi Remote Manager® (cloud based); SNMP v1/v2c/v3 (user installed/managed)
--------------------------	---

<b>LOCAL MANAGEMENT</b>	Web Interface (HTTPS); CLI (SSH, Serial port)
-------------------------	---

<b>MANAGEMENT/ TROUBLESHOOTING</b>	Protocol Analyzer with PCAP for Wireshark, Event and System Logging (with Syslog), accessible from Digi Remote Manager, SFTP or SCP
--	---

<b>PROGRAMMING TOOLS/ ENVIRONMENTS</b>	Python v3.6
--	-------------

<b>MEMORY</b>	2GB RAM, 8GB Flash (CFAST card)
---------------	---------------------------------

## POWER

<b>INPUT</b>	9-36VDC, 12/24 VDCV vehicle rated, cold-crank down to 6VDC
--------------	--

<b>DELAYED SHUTDOWN</b>	Configurable power down following ignition off indication
-------------------------	---

## ENVIRONMENTAL

<b>PHYSICAL</b>	10.2 in x 7.8 in x 2.6 in (260 mm x 196 mm x 67 mm)
-----------------	---

<b>STATUS LEDS</b>	Power, WWAN (signal, service) per module, Wi-Fi Service (per module), GNSS Service, LAN (link, activity)
--------------------	--

<b>ENCLOSURE IP40</b>	Aluminum alloy
-----------------------	----------------

<b>MOUNTING</b>	Flexible mounting options
-----------------	---------------------------

\*Transfer rates are network operator dependent

## SPECIFICATIONS

## DIGI TRANSPORT® WR64

### ENVIRONMENTAL

OPERATING TEMPERATURE	-30° C to +70° C
STORAGE TEMPERATURE	-40° C to +85° C
RELATIVE HUMIDITY	0% to 95% (non-condensing) @ 25° C

### APPROVALS

CELLULAR	PTCRB, NAPRD.03, GCF-CC, R&TTE, EN 301 511
SAFETY	UL 60950/EN62368, CSA 22.2 No. 60950
EMISSIONS/IMMUNITY	CE, FCC Part 15 Class B, EN55024, EN55022 Class B
INDUSTRY	MIL-STD 810G (temperature, humidity, vibration, shock, dust) Vehicle-grade certifications: E-Mark (E13), SAE J1113-2 / J1455, ISO 7637-2/3, ISO 10605

### WARRANTY

PRODUCT WARRANTY	3 years
------------------	---------

## PRODUCT IMAGES

### FRONT



### BACK

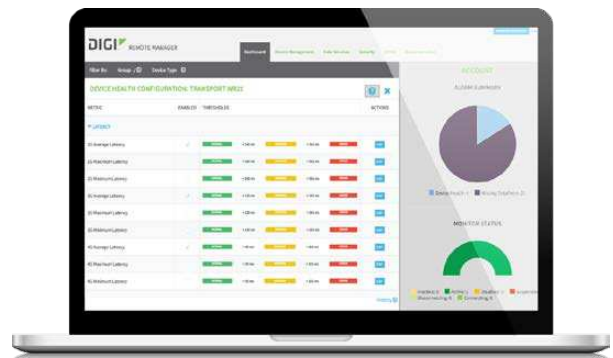


## DIGI REMOTE MANAGER®

### Manage and control devices from a central, secure platform.

When it comes to the Internet of Things, only the most reliable communication connections will do. With Digi Remote Manager, you can visually monitor, update and maintain the performance requirements you depend on most, with reports on the following key parameters:

- Cellular connection history
- 3G/4G LTE signal quality
- Public Wi-Fi client usage statistics
- Packet delivery
- Latency
- Cellular data sent and received
- CPU and memory utilization
- Network interface throughput
- Level 1 PCI-DSS validation
- Open APIs available to support application development



### SECURITY

- Certified SSAE-16 facilities
- Over 175 security controls in place to protect data
- Security framework compliance with PCI, HIPAA, NIST and others
- Earned SkyHigh's Cloud Trust Program highest ranking of Enterprise-ready
- PCI certified; Attestation of Compliance

PART NUMBERS	DESCRIPTION
WR64-A121	Digi TransPort WR64 - dual LTE, dual Wi-Fi, worldwide

PART NUMBERS	ACCESSORIES*
76002076	AC Power Supply - 12VDC - 3-pin Power Connector
76002069	Accessory Kit - TransPort WR64

\*Sold separately, unless otherwise noted.

FOR MORE INFORMATION  
PLEASE VISIT [WWW.DIGI.COM](http://WWW.DIGI.COM)

**DIGI SERVICE AND SUPPORT** / You can purchase with confidence knowing that Digi is always available to serve you with expert technical support and our industry leading warranty. For detailed information visit [www.digi.com/support](http://www.digi.com/support).

© 1996-2018 Digi International Inc. All rights reserved.  
All trademarks are the property of their respective owners.

91004152  
A4/818

**DIGI INTERNATIONAL WORLDWIDE HQ**  
877-912-3444 / 952-912-3444 / [www.digi.com](http://www.digi.com)

**DIGI INTERNATIONAL GERMANY**  
+49-89-540-428-0

**DIGI INTERNATIONAL JAPAN**  
+81-3-5428-0261 / [www.digi-intl.co.jp](http://www.digi-intl.co.jp)

**DIGI INTERNATIONAL SINGAPORE**  
+65-6213-5380

**DIGI INTERNATIONAL CHINA**  
+86-21-50492199 / [www.digi.com.cn](http://www.digi.com.cn)

