



Chipsmall Limited consists of a professional team with an average of over 10 year of expertise in the distribution of electronic components. Based in Hongkong, we have already established firm and mutual-benefit business relationships with customers from,Europe,America and south Asia,supplying obsolete and hard-to-find components to meet their specific needs.

With the principle of "Quality Parts,Customers Priority,Honest Operation,and Considerate Service",our business mainly focus on the distribution of electronic components. Line cards we deal with include Microchip,ALPS,ROHM,Xilinx,Pulse,ON,Everlight and Freescale. Main products comprise IC,Modules,Potentiometer,IC Socket,Relay,Connector.Our parts cover such applications as commercial,industrial, and automotives areas.

We are looking forward to setting up business relationship with you and hope to provide you with the best service and solution. Let us make a better world for our industry!



Contact us

Tel: +86-755-8981 8866 Fax: +86-755-8427 6832

Email & Skype: info@chipsmall.com Web: www.chipsmall.com

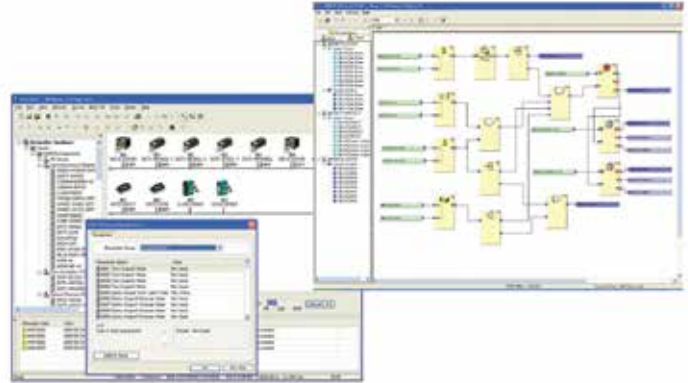
Address: A1208, Overseas Decoration Building, #122 Zhenhua RD., Futian, Shenzhen, China



For full product information, visit www.sti.com. Use the SpeedSPEC Code for quick access to the specific web page.

Network Configurator

- Programming software for creating safety circuits
- Used to configure Safety Network Controllers and Safety I/O Terminals
- Provides safety circuit programming functions
- Provides monitoring functions for safety circuits
- Includes DeviceNet Configurator functions
- A Rapid Delivery Product: Select models are available for shipment today or within 3 to 5 days



Specifications

Applicable computer	IBM PC/AT or compatible
CPU	Intel Pentium PC, 300 MHz or higher (Pentium III, 1-GHz or higher recommended)
OS	Microsoft Windows 2000 Microsoft Windows XP Microsoft Windows Vista** Microsoft Windows 7**
Supported languages	English
RAM	256 MB or higher
Hard disk	At least 200 MB of available hard disk space
Monitor	S-VGA or better display capability
CD-ROM	One CD-ROM drive min.
Communications ports	One of the following communications ports is required. <ul style="list-style-type: none"> • USB port Connecting online via the USB port (USB 1.1) of the NE1A-SCPU-series Controllers • DeviceNet Interface Card 3G8E2-DRM21-V1: Connecting online via DeviceNet

Note: Windows is a registered trademark of Microsoft.
IBM is a registered trademark of International Business Machines Corp.

Ordering

Name	Components	Applicable computer	Applicable OS	Model
Network Configurator	Installation disc (CD-ROM: 1 license)	IBM PC/AT or compatible	Windows 2000 Windows XP Windows Vista** Windows 7**	WS02-CFSC1-EV3
	Upgrade disc (CD-ROM: 1 license)*			WS02-CFSC1-EV3-UP

*We recommend you use the upgrade disk if you are using a version earlier than version 3.3.
**Windows Vista (32-bit) is supported in versions 2.20 and later. Windows Vista & Windows 7 (32-bit and 64-bit) are supported in versions 3.3 and later.
Note: If you are using a version 2.0, you can upgrade to the latest 2.xx version of the software at www.sti.com.

 **Select models are available for Rapid Delivery.**

Visit this product on www.sti.com for details.