



Chipsmall Limited consists of a professional team with an average of over 10 year of expertise in the distribution of electronic components. Based in Hongkong, we have already established firm and mutual-benefit business relationships with customers from,Europe,America and south Asia,supplying obsolete and hard-to-find components to meet their specific needs.

With the principle of "Quality Parts,Customers Priority,Honest Operation,and Considerate Service",our business mainly focus on the distribution of electronic components. Line cards we deal with include Microchip,ALPS,ROHM,Xilinx,Pulse,ON,Everlight and Freescale. Main products comprise IC,Modules,Potentiometer,IC Socket,Relay,Connector.Our parts cover such applications as commercial,industrial, and automotives areas.

We are looking forward to setting up business relationship with you and hope to provide you with the best service and solution. Let us make a better world for our industry!



Contact us

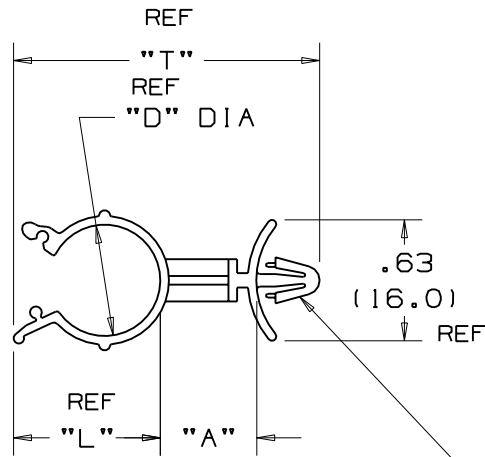
Tel: +86-755-8981 8866 Fax: +86-755-8427 6832

Email & Skype: info@chipsmall.com Web: www.chipsmall.com

Address: A1208, Overseas Decoration Building, #122 Zhenhua RD., Futian, Shenzhen, China

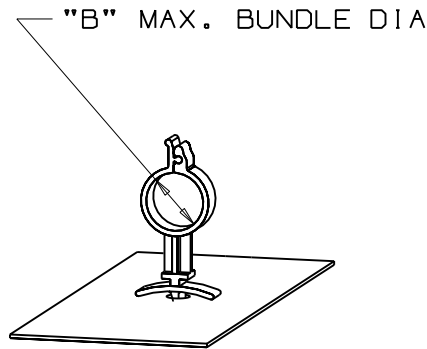
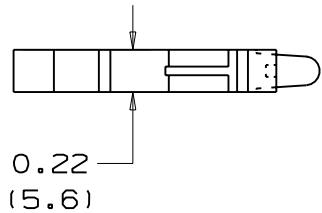


THIS COPY IS PROVIDED ON A RESTRICTED BASIS AND IS NOT TO BE USED IN ANY WAY DETRIMENTAL TO THE INTERESTS OF PANDUIT CORP.



PANDUIT PART NO.	"A" in/mm	"L" in/mm REF	"D" in/mm REF	"T" in/mm REF	"B" MAX. BUNDLE DIA. in/mm	WEIGHT lbs. 100 (g) pcs
WS25-25	0.25(6.4)	0.46(11.7)	0.30(7.6)	1.04(26.4)	0.25(6.4)	0.11(50)
WS25-50	0.50(12.7)	0.46(11.7)	0.30(7.6)	1.29(32.8)	0.25(6.4)	0.13(59)
WS25-75	0.75(19.1)	0.46(11.7)	0.30(7.6)	1.54(39.1)	0.25(6.4)	0.15(68)
WS35-25	0.25(6.4)	0.57(14.5)	0.42(10.7)	1.15(29.2)	0.35(8.9)	0.12(54)
WS35-50	0.50(12.7)	0.57(14.5)	0.42(10.7)	1.40(35.6)	0.35(8.9)	0.14(64)
WS35-75	0.75(19.1)	0.57(14.5)	0.42(10.7)	1.65(41.9)	0.35(8.9)	0.16(73)
WS50-25	0.25(6.4)	0.72(18.3)	0.58(14.7)	1.30(33.0)	0.47(11.9)	0.14(64)
WS50-50	0.50(12.7)	0.72(18.3)	0.58(14.7)	1.55(39.4)	0.47(11.9)	0.16(73)
WS50-75	0.75(19.1)	0.72(18.3)	0.58(14.7)	1.80(45.7)	0.47(11.9)	0.18(82)
WS75-25	0.25(6.4)	1.07(27.2)	0.96(24.4)	1.65(41.9)	0.78(19.8)	0.16(73)
WS75-50	0.50(12.7)	1.07(27.2)	0.96(24.4)	1.90(48.3)	0.78(19.8)	0.18(82)
WS75-75	0.75(19.1)	1.07(27.2)	0.96(24.4)	2.15(54.6)	0.78(19.8)	0.20(91)

FITS 0.187(4.7)/0.192(4.8) DIA. HOLE
PANEL THK. 0.03(0.8)/0.08(2.0)



NOTES:

- SEE CURRENT PRICE SHEET FOR PART NUMBER SUFFIX DESIGNATION FOR PACKAGE SIZE AND COLOR.

(DIMENSIONS IN PARENTHESES ARE IN METRIC.)

CAD FILENAME/LAYERS

G00239CT_PB_WCS_03



CORP.

TINLEY PARK, ILLINOIS

WIRE CLIP STANDOFF

REV	DATE	BY	CHK	DESCRIPTION	ECN	R	CUST	SUP
3	1/25/06	JAD		REMOVED 'M' FROM END OF EACH PART NO.	GB0239CT	3		
2	6/27/01	LGG		UPDATED FOR WEB (ADDED REF)	GB0239CT	2		
1	7/31/95	CBJ		ADDED NOTE	GB0239CT	1		
R	7/26/95	CBJ		INITIAL RELEASE	GB0239CT	R		

UNLESS OTHERWISE SPECIFIED,
DIMENSIONAL TOLERANCES ARE:
(.X) ±0.1(2.5) (.XXX) ±0.020(1.5)
(.XX) ±0.05(1.3) ANGLES ±5°

UNLESS OTHERWISE SPECIFIED,
ALL DIMENSIONS ARE GIVEN
IN INCHES, THIRD ANGLE PROJECTION.

DRAWN BY CBJ

MAT'L:

SCALE

DATE 7/26/95

NYLON 6/6

DRAWING NO.

GB0239CT

DWG

A

SIZE