



Chipsmall Limited consists of a professional team with an average of over 10 year of expertise in the distribution of electronic components. Based in Hongkong, we have already established firm and mutual-benefit business relationships with customers from,Europe,America and south Asia,supplying obsolete and hard-to-find components to meet their specific needs.

With the principle of “Quality Parts,Customers Priority,Honest Operation,and Considerate Service”,our business mainly focus on the distribution of electronic components. Line cards we deal with include Microchip,ALPS,ROHM,Xilinx,Pulse,ON,Everlight and Freescale. Main products comprise IC,Modules,Potentiometer,IC Socket,Relay,Connector.Our parts cover such applications as commercial,industrial, and automotives areas.

We are looking forward to setting up business relationship with you and hope to provide you with the best service and solution. Let us make a better world for our industry!



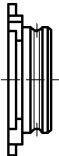
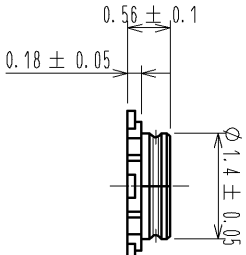
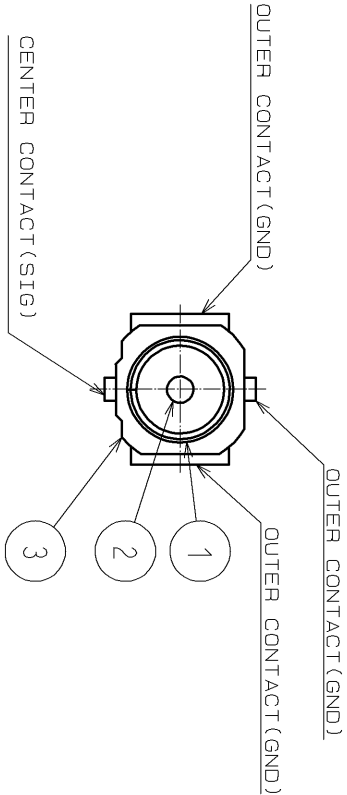
Contact us

Tel: +86-755-8981 8866 Fax: +86-755-8427 6832

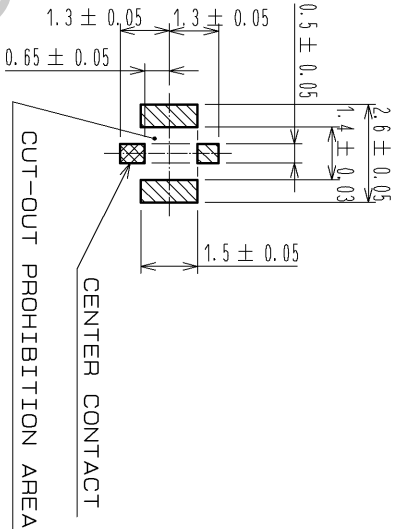
Email & Skype: info@chipsmall.com Web: www.chipsmall.com

Address: A1208, Overseas Decoration Building, #122 Zhenhua RD., Futian, Shenzhen, China

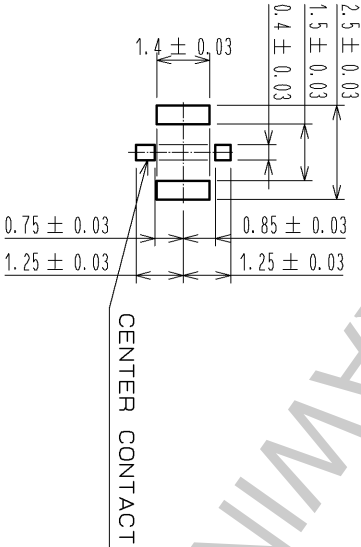
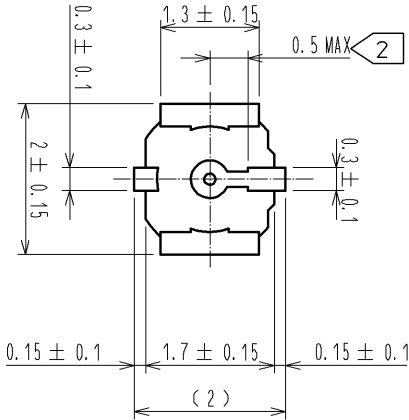




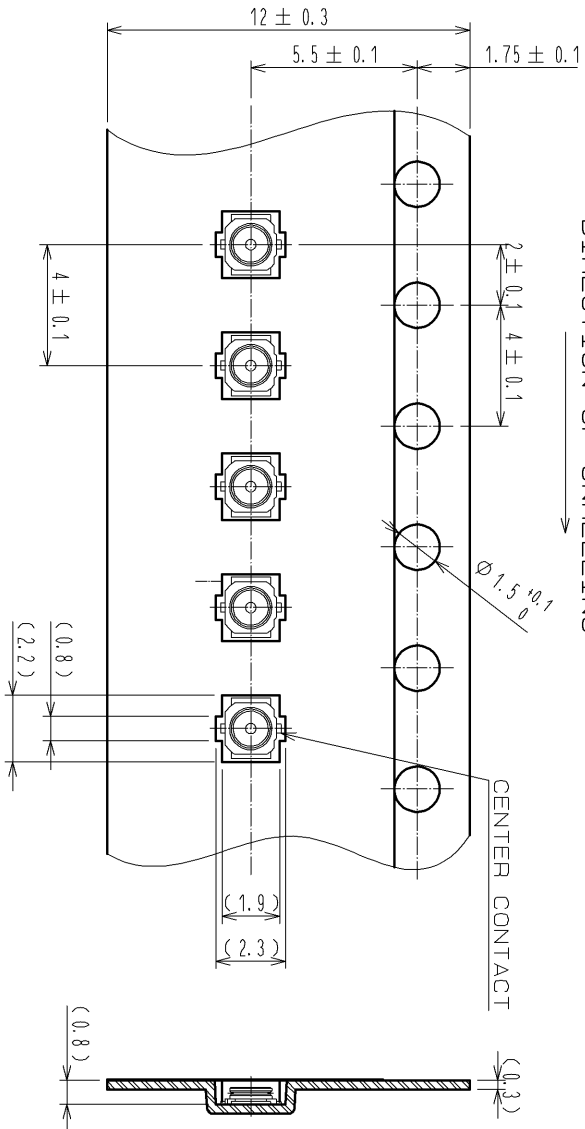
RECOMMENDED PCB LAYOUT
(MOUNTING SURFACE SIDE)(5:1)



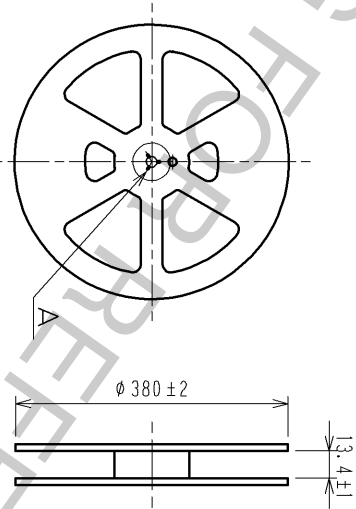
RECOMMENDED METAL MASK DIMENSIONS (5:1)
METAL MASK THICKNESS:0.1mm/0.12mm



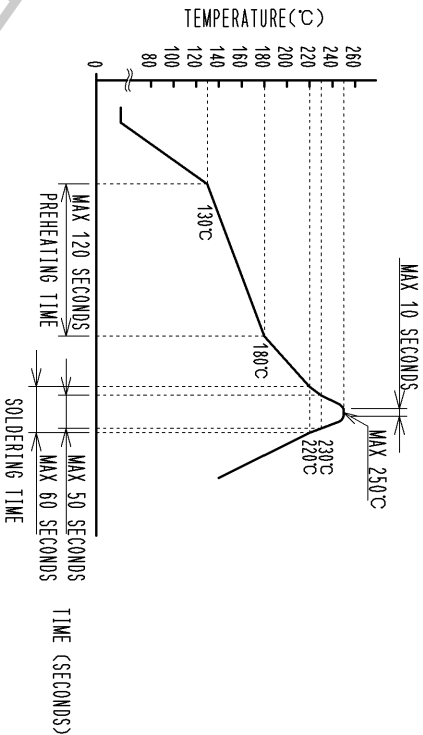
EMBOSSED TAPING DRAWING(4:1)



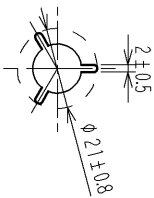
REEL DRAWING(SCALE FREE)



REFLOW TEMPERATURE PROFILE USING
LEAD-FREE SOLDER PASTE (REFERENCE)



A (SCALE FREE)



THIS TEMPERATURE PROFILE IS PER THE CONDITIONS SHOWN ABOVE.
ADDITIONAL FACTORS, SUCH AS SOLDER PASTE TYPE,
PCB SIZE AND OTHER MOUNTED COMPONENTS COULD AFFECT THE PROFILE. THEREFORE,
A THOROUGH EVALUATION OF MOUNTING CONDITION IS REQUIRED PRIOR TO PRODUCTION.
TEMPERATURE IS MEASURED AT CONTACT LEAD.




ROHS COMPLIANT


- 5:USE ALL PRODUCTS WITHIN 6 MONTHS AFTER THE DELIVERY.
STORE THEM IN MANUFACTURER'S PACKAGE OR TIGHTLY RE-CLOSED BOX WITH
THE FOLLOWING CONDITIONS.CHECK THE TERMINAL SOLDERABILITY BEFORE
USE IF THE PRODUCT HAS BEEN STORED FOR MORE THAN 6 MONTHS.
TEMPERATURE:-10℃ TO +40℃
HUMIDITY : 15 TO 85% RH.

- 6:ENVIRONMENTAL CONDITIONS
DO NOT USE THE PRODUCTS UNDER THE ENVIRONMENTAL CONDITIONS
AS SHOWN BELOW DUE TO POSSIBLE PRODUCT DETERIORATION.

SPECIAL GAS ATMOSPHERE(HYDROGEN SULFIDE GAS,SULFUR SULFIDE GAS
AND HYDROGEN CHLORIDE GAS)
PLACE ATTENTION REQUIRED:HEATING SYSTEM,AREA NEAR HOT SPRING,
VOLCANIC MOUNTAIN AND ALIKE.

WATER SPLACHED AND CONDENSATION PLACES.
PLACE ATTENTION REQUIRED:HARSH TEMPERATURE CHANGE.

1	PHOSPHOR BRONZE	UNDER PLATING:NICKEL 1.27μm MIN CONTACT AREA PLATING:GOLD 0.03μm MIN MOUNTING AREA PLATING:GOLD 0.03μm MIN (SELECTIVE GOLD PLATING)			2	BRASS	UNDER PLATING:NICKEL 1.27μm MIN CONTACT AREA PLATING:GOLD 0.14μm MIN MOUNTING AREA PLATING:GOLD 0.03μm MIN				
NO.	MATERIAL	FINISH . REMARKS				NO.	MATERIAL	FINISH . REMARKS			
UNITS mm		SCALE 10 : 1		COUNT	DESCRIPTION OF REVISIONS		DESIGNED	CHECKED	DATE		
		APPROVED :T.S. NOBE			DRAWING NO.		EDC3-318791-90				
		CHECKED :NK. NINOMIYA			PART NO.		X.FL-R-SMT-1(90)				
		DESIGNED :Y.I. FUNADA			CODE NO.		CL331-0701-8-90				
		DRAWN :Y.I. FUNADA					 1/1				



HIROSE
ELECTRIC
CO., LTD.