



Chipsmall Limited consists of a professional team with an average of over 10 year of expertise in the distribution of electronic components. Based in Hongkong, we have already established firm and mutual-benefit business relationships with customers from,Europe,America and south Asia,supplying obsolete and hard-to-find components to meet their specific needs.

With the principle of “Quality Parts,Customers Priority,Honest Operation,and Considerate Service”,our business mainly focus on the distribution of electronic components. Line cards we deal with include Microchip,ALPS,ROHM,Xilinx,Pulse,ON,Everlight and Freescale. Main products comprise IC,Modules,Potentiometer,IC Socket,Relay,Connector.Our parts cover such applications as commercial,industrial, and automotives areas.

We are looking forward to setting up business relationship with you and hope to provide you with the best service and solution. Let us make a better world for our industry!



Contact us

Tel: +86-755-8981 8866 Fax: +86-755-8427 6832

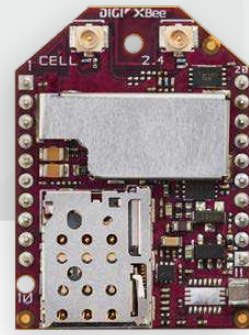
Email & Skype: info@chipsmall.com Web: www.chipsmall.com

Address: A1208, Overseas Decoration Building, #122 Zhenhua RD., Futian, Shenzhen, China





LTE-M CELLULAR
SMART MODEM



DIGI XBEE³ CELLULAR LTE-M

Compact, flexible cellular connectivity for IoT devices and gateways.

Digi XBee3™ modules accelerate time to market for designers, OEMs and solution providers by quickly enabling wireless connectivity and easy-to-add functionality. Building on industry-leading technology, pre-certified Digi XBee3 modules offer the flexibility to switch between multiple frequencies and wireless protocols as needed.

Digi XBee3 modules are the latest addition to the expanding Digi XBee Ecosystem of wireless modules, adapters and software – all engineered to accelerate development and deployment. Ideal for low data (typically <5 MB per month and where latency is not critical), low power, low-cost applications,

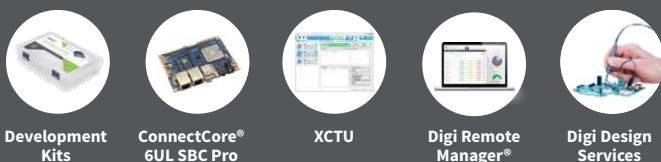
Digi XBee3 Cellular LTE-M modules feature a power saving mode which extends sleep time and battery life.

With Digi Remote Manager®, Digi XBee3 modules can be easily configured and controlled from a simple, central platform. Built-in Digi TrustFence® security, identity and data privacy features use more than 175 controls to protect against new and evolving cyber threats. Standard Digi XBee API frames and AT commands, MicroPython and XCTU software tools simplify adding functionality, set-up, configuration and testing.

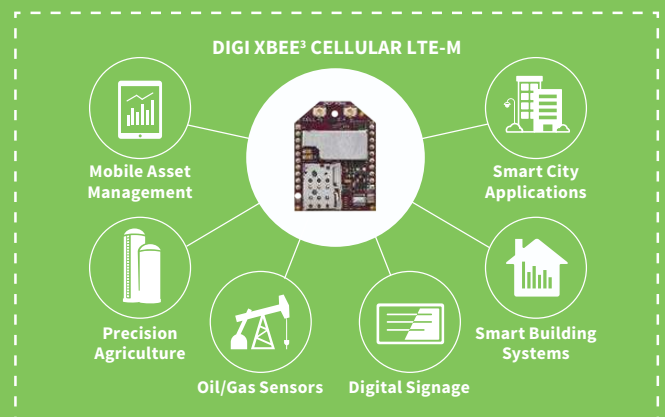
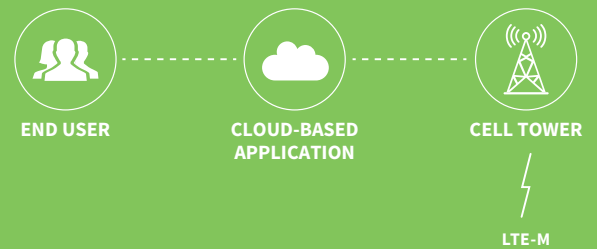
BENEFITS

- FCC certified and carrier end-device certified
- Integrated MicroPython Programmability
- 180 days of free cellular service with development kits
- Excellent coverage and building penetration
- Low power consumption optimized for long battery life
- Direct USB provides easy PPP integration option
- Enhanced with Digi TrustFence® security framework
- Manage and configure with XCTU and Digi Remote Manager®
- Digi XBee Transparent and API modes simplify design
- Reduced hardware complexity with only 1 antenna required

RELATED PRODUCTS



APPLICATION EXAMPLE



SPECIFICATIONS

Digi XBee3™ Cellular Smart Modem, LTE-M

HARDWARE	
CELLULAR CHIPSET	u-blox SARA-R410M-02B
FORM FACTOR	Digi XBee 20-pin through-hole
ANTENNA OPTIONS	1 U.FL (Cellular), 1 U.FL (Bluetooth)
DIMENSIONS	24.38 mm x 32.94 mm
OPERATING TEMPERATURE	-40° C to +85° C
SIM SIZE	4FF Nano
INTERFACE AND I/O	
DATA INTERFACE	UART, SPI, USB
OPERATING MODES	Transparent and API over serial, PPP over USB or Serial
SECURITY	Digi TrustFence® security with Secure Boot and Protected JTAG
CONFIGURATION TOOLS	Digi XCTU (Local), Digi Remote Manager (OTA)
EMBEDDED PROGRAMMABILITY	MicroPython with 32 KB Flash / 32 KB RAM
I/O	4 ADC lines (10-bit), 13 Digital I/O, USB, I2C
BLUETOOTH	Bluetooth LE Ready
CELLULAR CHARACTERISTICS	
TRANSMIT POWER	Up to 23 dBm
RECEIVE SENSITIVITY	-105 dBm
CARRIER APPROVALS	AT&T End Device Certified Verizon End Device Certification Bell End Device Certification (Pending) Telus End Device Certification (Pending) Compatible with other LTE-M carriers, see band support
SUPPORTED BANDS	Bands 1, 2, 3, 4, 5, 8, 12, 13, 17, 19, 20, 25, 26, 28 and 39
DOWNLINK/UPLINK SPEEDS	Up to 375 kb/s
DUPLEX MODE	Half-Duplex
POWER REQUIREMENTS (AT 3.3VDC INPUT POWER)	
SUPPLY VOLTAGE	Standard Version: 3.3-4.3VDC; Extended Input Range*: 2.8 to 5.5VDC
PEAK TRANSMIT CURRENT	Standard Version: 550mA w/ Bluetooth disabled; 610mA w/ Bluetooth enabled Extended Input Range: 800mA w/ Bluetooth disabled; 860mA w/ Bluetooth enabled
AVG TRANSMIT CURRENT	235mA
POWER SAVE MODE	Standard Version: 20uA Extended Input Range*: 60uA
DEEP SLEEP	10uA
REGULATORY AND CARRIER APPROVALS	
FCC (USA)	MCQ-XB3M1
IC (CANADA)	1846A-XB3M1
VERIZON END-DEVICE CERTIFIED	Complete
AT&T END-DEVICE CERTIFIED	Complete

PART NUMBERS

DESCRIPTION

XB3-C-A2-UT-001	Digi XBee3 Cellular Smart Modem, LTE M
XK3-C-A2-UT-U	Digi XBee3 Cellular Smart Modem, LTE M, Development Kit, AT&T

*Contact Digi for more information

DIGI SERVICE AND SUPPORT / You can purchase with confidence knowing that Digi is always available to serve you with expert technical support and our industry leading warranty. For detailed information visit www.digi.com/support.

© 1996-2018 Digi International Inc. All rights reserved.
All trademarks are the property of their respective owners.

91003677
B5/618

DIGI INTERNATIONAL WORLDWIDE HQ
877-912-3444 / 952-912-3444 / www.digi.com

DIGI INTERNATIONAL GERMANY
+49-89-540-428-0

DIGI INTERNATIONAL JAPAN
+81-3-5428-0261 / www.digi-intl.co.jp

DIGI INTERNATIONAL SINGAPORE
+65-6213-5380

DIGI INTERNATIONAL CHINA
+86-21-50492199 / www.digi.com.cn

