



Chipsmall Limited consists of a professional team with an average of over 10 year of expertise in the distribution of electronic components. Based in Hongkong, we have already established firm and mutual-benefit business relationships with customers from,Europe,America and south Asia,supplying obsolete and hard-to-find components to meet their specific needs.

With the principle of “Quality Parts,Customers Priority,Honest Operation,and Considerate Service”,our business mainly focus on the distribution of electronic components. Line cards we deal with include Microchip,ALPS,ROHM,Xilinx,Pulse,ON,Everlight and Freescale. Main products comprise IC,Modules,Potentiometer,IC Socket,Relay,Connector.Our parts cover such applications as commercial,industrial, and automotives areas.

We are looking forward to setting up business relationship with you and hope to provide you with the best service and solution. Let us make a better world for our industry!



Contact us

Tel: +86-755-8981 8866 Fax: +86-755-8427 6832

Email & Skype: info@chipsmall.com Web: www.chipsmall.com

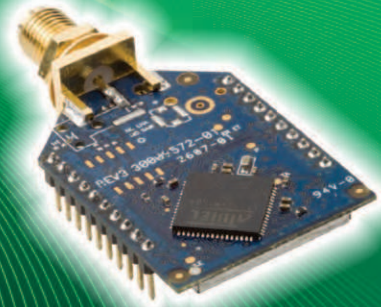
Address: A1208, Overseas Decoration Building, #122 Zhenhua RD., Futian, Shenzhen, China



XBee-PRO[®] 900

Point-to-Multipoint Embedded RF Modules for OEMs

XBee-PRO 900 modules deliver device connectivity with exceptional RF range performance using a fast point-to-multipoint protocol.



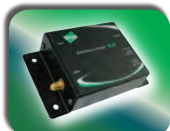
Overview

XBee-PRO 900 embedded RF modules provide extended-range wireless connectivity to end-point devices. These modules use a proprietary 900 MHz point-to-multipoint protocol that balances overall RF performance with a fast 156 Kbps data rate to the end node. Supporting RF line-of-sight distances of up to 6 miles (with high gain antennas), they are ideal for extended-range wireless applications requiring low latency and increased data throughput.

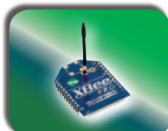
As a part of Digi's XBee[®] family of RF products, these modules are easy to use, share a common hardware footprint, and are fully interoperable with other XBee products utilizing the same technology. They are available in a variety of different protocols to suit different applications, enabling users to substitute one XBee module for another with minimal development time and risk.

Digi's unsurpassed offering of Drop-in Networking products provides users with seamless communication between devices. XBee adapters provide wireless connectivity to electronic devices in wired networks. ConnectPort[™] X gateways enable users to access and configure remote devices in a network.

Related Products



Gateways



Modules



Adapters



Development Kits

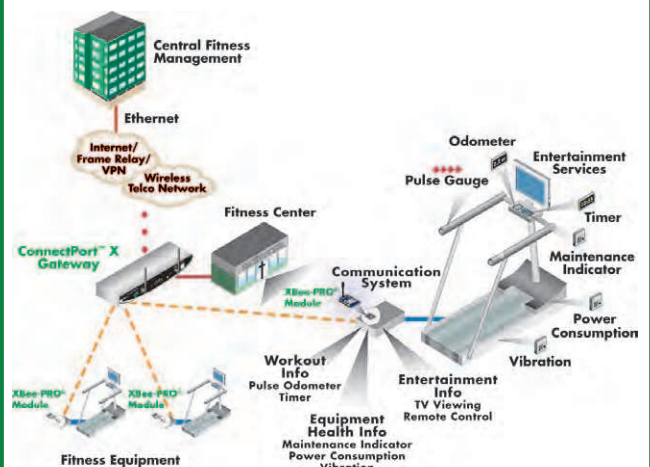


Network Extenders



Accessories

Application Highlight



Features/Benefits

- No configuration needed for out-of-the-box RF communications
- Common XBee footprint for a variety of RF modules
- 900 MHz for extended-range operation
- Outdoor RF line-of-sight range up to 6 miles (10 km)
- Fast 156 Kbps RF data rate
- Sleep modes supported for increased battery life
- Multiple antenna options
- Capable of deploying the DigiMesh[™] protocol with a simple firmware change



Performance

RF Data Rate	156 Kbps
Indoor/Urban Range	450 ft (140 m)
Outdoor/RF Line-of-Sight Range	Up to 1.8 miles (3 km)
Outdoor/RF Line-of-Sight Range w/ High-Gain Antenna	Up to 6 miles (10 km)
Transmit Power	50 mW (+17 dBm)
Receiver Sensitivity (10% PER)	-100 dBm

Features

Serial Data Interface	3.3V CMOS Serial UART (5V tolerant inputs)
Configuration Method	AT & API, local or over-the-air
Frequency Band	900 MHz ISM
Interference Immunity	FHSS
Serial Data Rate	Up to 230 Kbps
ADC Inputs	Coming in future firmware revisions
Digital I/O	Coming in future firmware revisions
Antenna Options	Wired Whip, U.FL connector, RPSMA connector

Networking & Security

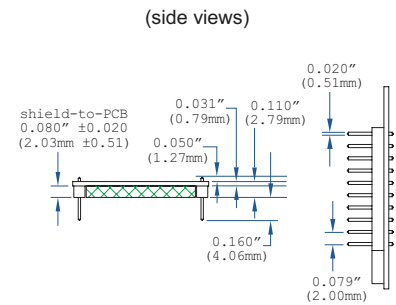
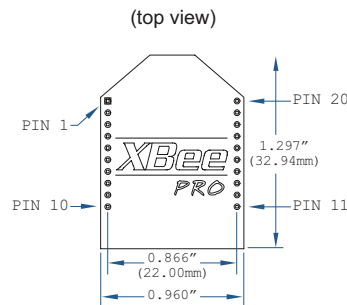
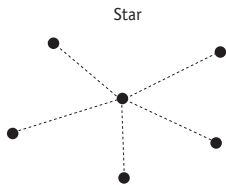
Encryption	128-bit AES
Reliable Packet Delivery	Retries/Acknowledgments
Addressing Options	PAN ID, channel, 64-bit address
Channels	8 hopping patterns on 12 channels or single channel

Power Requirements

Supply Voltage	3.0 – 3.6 VDC
Transmit Current	210 mA
Receive Current	80 mA
Power-Down Current	60 uA @ 3.3V

Regulatory Approvals

FCC (USA)	Yes
IC (Canada)	Yes
C-TICK (Australia)	No



Visit www.digi.com for part numbers.

DIGI SERVICE AND SUPPORT - You can purchase with confidence knowing that Digi is here to support you with expert technical support and a strong five-year warranty. www.digi.com/support

Digi International
877-912-3444
952-912-3444
info@digi.com

**Digi International
France**
+33-1-55-61-98-98
www.digi.fr

**Digi International
KK**
+81-3-5428-0261
www.digi-intl.co.jp

**Digi International
(HK) Limited**
+852-2833-1008
www.digi.cn



91001475
B1/309

BUY ONLINE • www.digi.com

