



Chipsmall Limited consists of a professional team with an average of over 10 year of expertise in the distribution of electronic components. Based in Hongkong, we have already established firm and mutual-benefit business relationships with customers from,Europe,America and south Asia,supplying obsolete and hard-to-find components to meet their specific needs.

With the principle of “Quality Parts,Customers Priority,Honest Operation,and Considerate Service”,our business mainly focus on the distribution of electronic components. Line cards we deal with include Microchip,ALPS,ROHM,Xilinx,Pulse,ON,Everlight and Freescale. Main products comprise IC,Modules,Potentiometer,IC Socket,Relay,Connector.Our parts cover such applications as commercial,industrial, and automotives areas.

We are looking forward to setting up business relationship with you and hope to provide you with the best service and solution. Let us make a better world for our industry!



## Contact us

Tel: +86-755-8981 8866 Fax: +86-755-8427 6832

Email & Skype: info@chipsmall.com Web: www.chipsmall.com

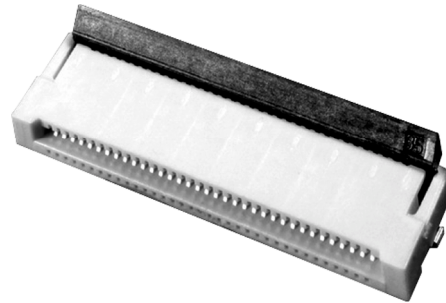
Address: A1208, Overseas Decoration Building, #122 Zhenhua RD., Futian, Shenzhen, China



## 0.5 mm-Pitch Rotary-Lock FPC Connector

## XF2H

SMT ZIF (Zero Insertion Force)  
Connector with Rotary-Lock  
Improves Assembly Reliability,  
Manufacturing Efficiency



- Rotary-lock at rear instead of front simplifies assembly, provides secure connection even if cable flexes upward
- FPC housing design ensures reliable alignment of the circuits during assembly, unaffected by rotary-lock
- Double-sided contacts can be used wherever top or bottom connection is needed, reducing part numbers on the bill of materials
- Connector is supplied with rotary-lock in the open position, eliminating one step during assembly, improving productivity
- Low profile, measures only 2 mm max. above the circuit board
- Connectors supplied on tape reels for automatic insertion

## Ordering Information

Circuits	Part number	Circuits	Part number	Quantity per reel
10	XF2H-1015-1	30	XF2H-3015-1	1,500 per reel  Order in multiples of the quantity per reel.
12	XF2H-1215-1	32	XF2H-3215-1	
13	XF2H-1315-1	33	XF2H-3315-1	
14	XF2H-1415-1	34	XF2H-3415-1	
18	XF2H-1815-1	35	XF2H-3515-1	
20	XF2H-2015-1	36	XF2H-3615-1	
21	XF2H-2115-1	38	XF2H-3815-1	
22	XF2H-2215-1	40	XF2H-4015-1	
24	XF2H-2415-1	45	XF2H-4515-1	
26	XF2H-2615-1	50	XF2H-5015-1	

Note: Connectors with different circuit counts and contact locations are available on special order. Contact your Omron representative.

## Specifications

Rated current	0.5 A
Rated voltage	50 VDC
Contact resistance	30 M $\Omega$ max. at 20 mVDC, 100 mA max.
Insulation resistance	100 M $\Omega$ min. at 250 VDC
Withstand voltage	250 VAC for 1 minute (with a leakage current of 1 mA max.)
Insertion tolerance	20 times
Ambient temperature	-30°C to 85°C (-22°F to 185°F); no condensation at low temperatures

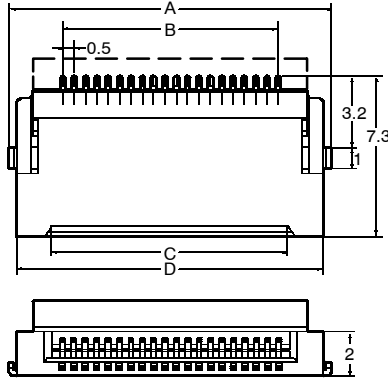
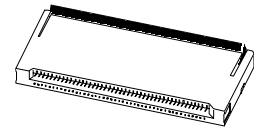
### ■ MATERIALS/FINISH

Housing	PA46 resin (UL94V-0)/natural
Slide lock	LCP resin (UL94V-0)/black
Contact	Copper-alloy/nickel spring substrate (2 $\mu$ m) plated with tin alloy (2 $\mu$ m)
Hold-down	Copper-alloy/copper substrate (2 $\mu$ m) plated with tin alloy (2 $\mu$ m)

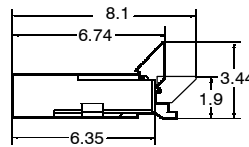
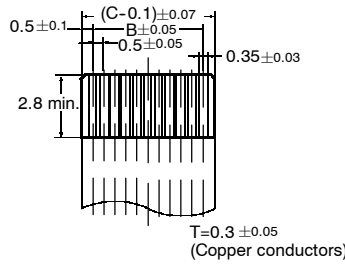
# Dimensions

Unit: mm

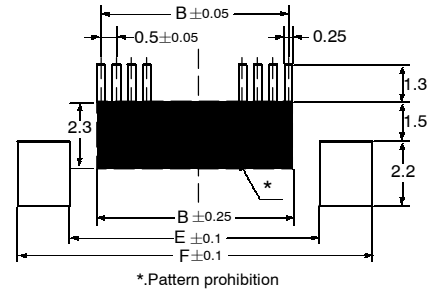
## XF2H-□□15-1



### Applicable FPC Dimensions



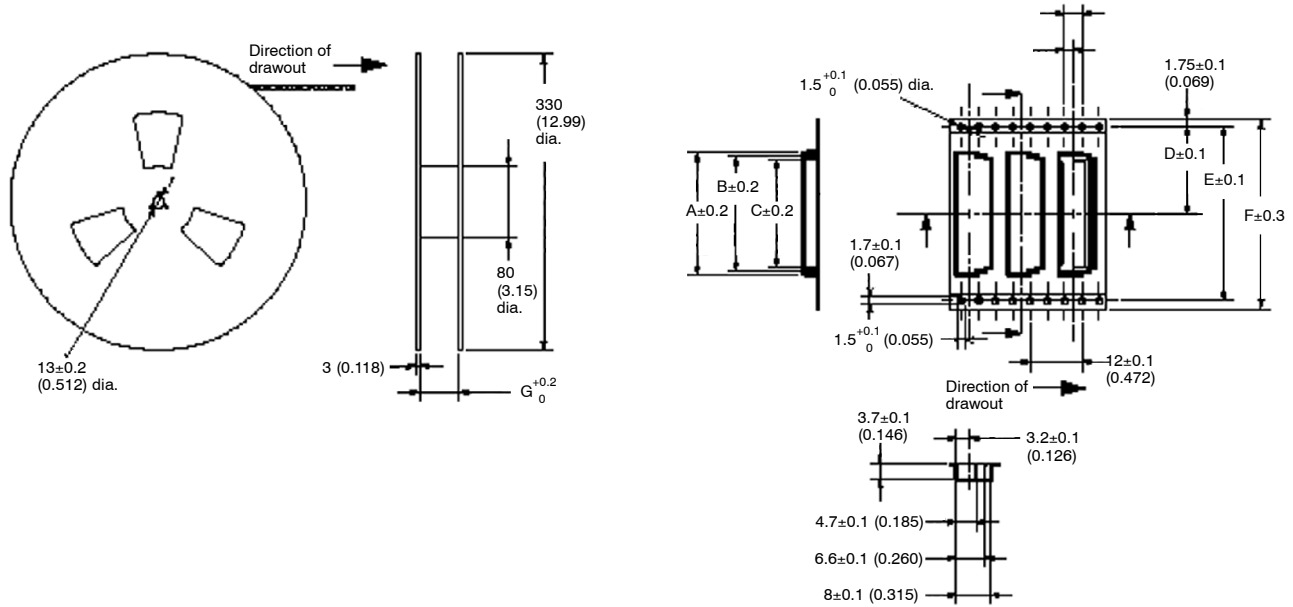
### Printed Circuit Board Matching Dimensions (Top View)



## TABLE OF DIMENSIONS

Circuits	Part number	A	B	C	D	E	F
10	XF2H-1015-1	9.1 (0.36)	4.5 (0.18)	5.6 (0.22)	8.5 (0.33)	6.5 (0.26)	10.1 (0.40)
12	XF2H-1215-1	10.1 (0.39)	5.5 (0.22)	6.6 (0.26)	9.5 (0.37)	7.5 (0.29)	11.1 (0.44)
13	XF2H-1315-1	10.6 (0.42)	6.0 (0.24)	7.1 (0.28)	10.0 (0.39)	8.0 (0.31)	11.6 (0.46)
14	XF2H-1415-1	11.1 (0.44)	6.5 (0.26)	7.6 (0.30)	10.5 (0.41)	8.5 (0.33)	12.1 (0.48)
18	XF2H-1815-1	13.1 (0.52)	8.5 (0.33)	9.6 (0.38)	12.5 (0.49)	10.5 (0.41)	14.1 (0.56)
20	XF2H-2015-1	14.1 (0.56)	9.5 (0.37)	10.6 (0.42)	13.5 (0.53)	11.5 (0.45)	15.1 (0.59)
21	XF2H-2115-1	14.6 (0.57)	10.0 (0.39)	11.1 (0.44)	14.0 (0.55)	12.0 (0.47)	15.6 (0.61)
22	XF2H-2215-1	15.1 (0.59)	10.5 (0.41)	11.6 (0.46)	14.5 (0.57)	12.5 (0.49)	16.1 (0.63)
24	XF2H-2415-1	16.1 (0.63)	11.5 (0.45)	12.6 (0.50)	15.5 (0.61)	13.5 (0.53)	17.1 (0.67)
26	XF2H-2615-1	17.1 (0.67)	12.5 (0.49)	13.6 (0.53)	16.5 (0.65)	14.5 (0.57)	18.1 (0.71)
30	XF2H-3015-1	19.1 (0.75)	14.5 (0.57)	15.6 (0.61)	18.5 (0.73)	16.5 (0.65)	20.1 (0.79)
32	XF2H-3215-1	20.1 (0.79)	15.5 (0.61)	16.6 (0.65)	19.5 (0.77)	17.5 (0.69)	21.1 (0.83)
33	XF2H-3315-1	20.6 (0.81)	16.0 (0.63)	17.1 (0.67)	20.0 (0.79)	18.0 (0.71)	21.6 (0.85)
34	XF2H-3415-1	21.1 (0.83)	16.5 (0.65)	17.6 (0.69)	20.5 (0.81)	18.5 (0.73)	22.1 (0.87)
35	XF2H-3515-1	21.6 (0.85)	17.0 (0.67)	18.1 (0.71)	21.0 (0.83)	19.0 (0.75)	22.6 (0.89)
36	XF2H-3615-1	22.1 (0.87)	17.5 (0.69)	18.6 (0.73)	21.5 (0.85)	19.5 (0.77)	23.1 (0.91)
38	XF2H-3815-1	23.1 (0.91)	18.5 (0.73)	19.6 (0.77)	22.5 (0.89)	20.5 (0.81)	24.1 (0.95)
40	XF2H-4015-1	24.1 (0.95)	19.5 (0.77)	20.6 (0.81)	23.5 (0.92)	21.5 (0.85)	25.1 (0.99)
45	XF2H-4515-1	26.6 (1.05)	22.0 (0.87)	23.1 (0.91)	26.0 (1.02)	24.0 (0.94)	27.6 (1.09)
50	XF2H-5015-1	29.1 (1.15)	24.5 (0.96)	25.6 (1.01)	28.5 (1.12)	26.5 (1.04)	30.1 (1.19)

■ TAPE AND REEL DIMENSIONS



Circuits	Part number	A	B	C	D	E	F	G				
10	XF2H-1015-1	10.2 (0.402)	8.7 (0.343)	7.4 (0.291)	11.5 (0.453)	—	24.0 (0.945)	24.4 (0.961)				
12	XF2H-1215-1	11.2 (0.441)	9.7 (0.82)	8.4 (0.331)								
13	XF2H-1315-1	11.7 (0.461)	10.2 (0.402)	8.9 (0.350)								
14	XF2H-1415-1	12.2 (0.480)	10.7 (0.421)	9.4 (0.370)								
18	XF2H-1815-1	14.2 (0.559)	12.7 (0.5)	11.4 (0.449)								
20	XF2H-2015-1	15.2 (0.598)	13.7 (0.539)	12.4 (0.488)								
21	XF2H-2115-1	15.7 (0.618)	14.2 (0.559)	12.9 (0.508)								
22	XF2H-2215-1	16.2 (0.638)	14.7 (0.579)	13.4 (0.528)								
24	XF2H-2415-1	17.2 (0.677)	15.7 (0.618)	14.4 (0.567)								
26	XF2H-2615-1	18.2 (0.717)	16.7 (0.657)	15.4 (0.606)					14.2 (0.559)	28.4 (1.118)	32.0 (1.260)	32.4 (1.276)
30	XF2H-3015-1	20.2 (0.795)	18.7 (0.736)	17.4 (0.685)								
32	XF2H-3215-1	21.2 (0.835)	19.7 (0.776)	18.4 (0.724)								
33	XF2H-3315-1	21.7 (0.854)	20.2 (0.795)	18.9 (0.744)								
34	XF2H-3415-1	22.2 (0.874)	20.7 (0.815)	19.4 (0.764)								
35	XF2H-3515-1	22.7 (0.894)	21.2 (0.835)	19.9 (0.783)	20.2 (0.795)	40.4 (1.591)	44.0 (1.732)	44.4 (1.748)				
36	XF2H-3615-1	23.2 (0.913)	21.7 (0.854)	20.4 (0.803)								
38	XF2H-3815-1	24.2 (0.953)	22.7 (0.894)	21.4 (0.843)								
40	XF2H-4015-1	25.2 (0.992)	23.7 (0.933)	22.4 (0.882)								
45	XF2H-4515-1	27.7 (1.091)	26.2 (1.031)	24.9 (0.980)								
50	XF2H-5015-1	30.2 (1.189)	28.7 (1.130)	27.4 (1.079)								

Note: \*For tape widths of 24 mm (dimension F), pilot holes are located on one side only.

## Precautions

---

### ■ RECOMMENDED REFLOW CONDITIONS

#### Pre-heat

Temperature:  $150 \pm 10^{\circ}\text{C}$

Time: 60 to 120 seconds

#### Soldering

Temperature: 200 to  $240^{\circ}\text{C}$

Time: Not exceeding 30 seconds  
(Not exceeding 10 seconds at  $240^{\circ}\text{C}$   
maximum temperature.)

### ■ STORAGE

Do not store under high humidity levels as this may cause deterioration of the insulation.

### ■ HANDLING THE FPC

Do not forcibly bend or pull an FPC which has been mounted and locked. This may cause discontinuities in the FPC.

**NOTE: DIMENSIONS SHOWN ARE IN MILLIMETERS. To convert millimeters to inches divide by 25.4.**

---

**OMRON**<sup>®</sup>**OMRON ELECTRONICS LLC**One East Commerce Drive  
Schaumburg, IL 60173**1-800-55-OMRON****OMRON ON-LINE**Global - <http://www.omron.com>  
USA - <http://www.omron.com/oei>  
Canada - <http://www.omron.com/oci>**OMRON CANADA, INC.**885 Milner Avenue  
Scarborough, Ontario M1B 5V8**416-286-6465**