



Chipsmall Limited consists of a professional team with an average of over 10 year of expertise in the distribution of electronic components. Based in Hongkong, we have already established firm and mutual-benefit business relationships with customers from,Europe,America and south Asia,supplying obsolete and hard-to-find components to meet their specific needs.

With the principle of “Quality Parts,Customers Priority,Honest Operation,and Considerate Service”,our business mainly focus on the distribution of electronic components. Line cards we deal with include Microchip,ALPS,ROHM,Xilinx,Pulse,ON,Everlight and Freescale. Main products comprise IC,Modules,Potentiometer,IC Socket,Relay,Connector.Our parts cover such applications as commercial,industrial, and automotives areas.

We are looking forward to setting up business relationship with you and hope to provide you with the best service and solution. Let us make a better world for our industry!



Contact us

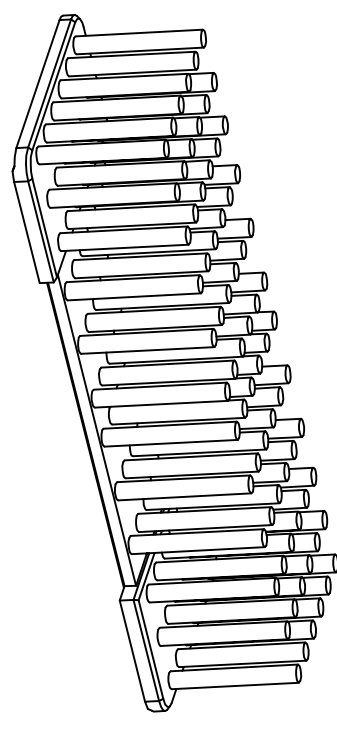
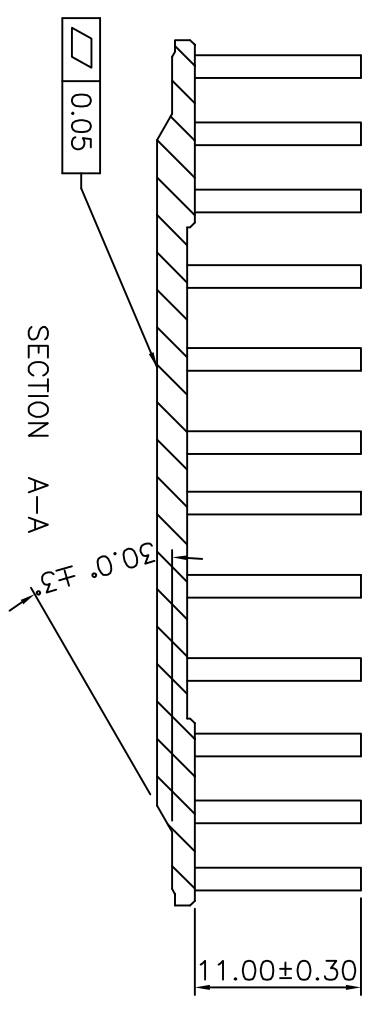
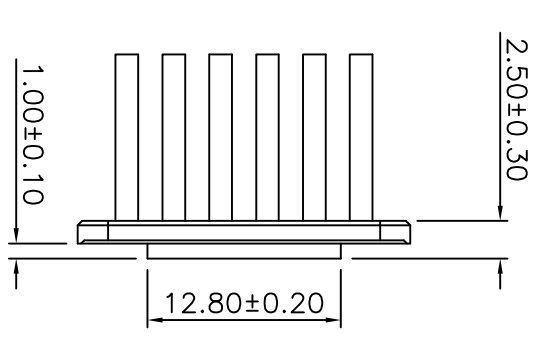
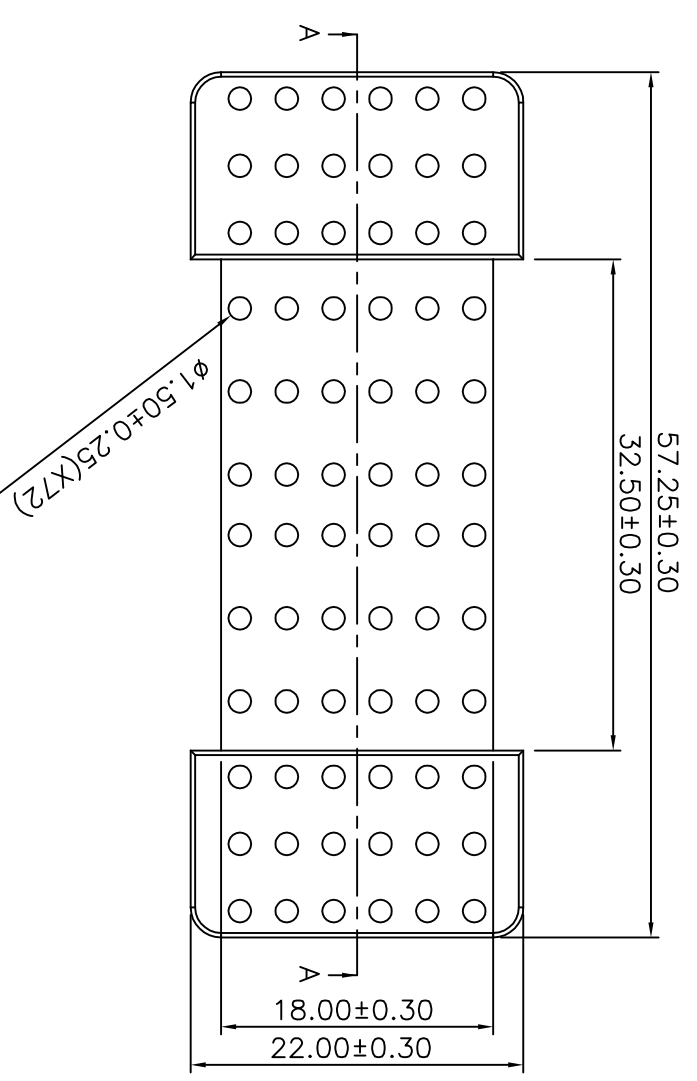
Tel: +86-755-8981 8866 Fax: +86-755-8427 6832

Email & Skype: info@chipsmall.com Web: www.chipsmall.com

Address: A1208, Overseas Decoration Building, #122 Zhenhua RD., Futian, Shenzhen, China



REVISION RECORD				
REV	ECO	DESCRIPTION	DRFT	CHKD



PART NUMBER: XFPHS1100-L

No.	DESCRIPTION	Q'ty	MATERIAL	PLATING
01	HEAT SINK L=11.0mm	1	Al	Ni

DETACHED LISTS		TOLERANCES EXCEPT AS NOTED	
MM	(INCH)	MM	(INCH)
.0 ± 0.2		.0 ± 0.2	
.00 ± 0.15		.00 ± 0.15	
.000 ± 0.075		.000 ± 0.075	
ANGLES ± 0.5		ANGLES ± 0.5	
THIRD ANGLE PROJECTION		THIRD ANGLE PROJECTION	

DFTO	tzou	DATE	06/05/06
CHKD		DATE	
MFO		DATE	
APPL		DATE	

TITLE	
XFP HEAT SINK	

DRAWING NO. XFPHS1100-L		SIZE
/PART NO. SEE NOTE		A3

DO NOT SCALE DRAWING		SHEET	1	OF	1
----------------------	--	-------	---	----	---

8 7 6 5 4 3 2 1