



Chipsmall Limited consists of a professional team with an average of over 10 year of expertise in the distribution of electronic components. Based in Hongkong, we have already established firm and mutual-benefit business relationships with customers from,Europe,America and south Asia,supplying obsolete and hard-to-find components to meet their specific needs.

With the principle of “Quality Parts,Customers Priority,Honest Operation,and Considerate Service”,our business mainly focus on the distribution of electronic components. Line cards we deal with include Microchip,ALPS,ROHM,Xilinx,Pulse,ON,Everlight and Freescale. Main products comprise IC,Modules,Potentiometer,IC Socket,Relay,Connector.Our parts cover such applications as commercial,industrial, and automotives areas.

We are looking forward to setting up business relationship with you and hope to provide you with the best service and solution. Let us make a better world for our industry!



Contact us

Tel: +86-755-8981 8866 Fax: +86-755-8427 6832

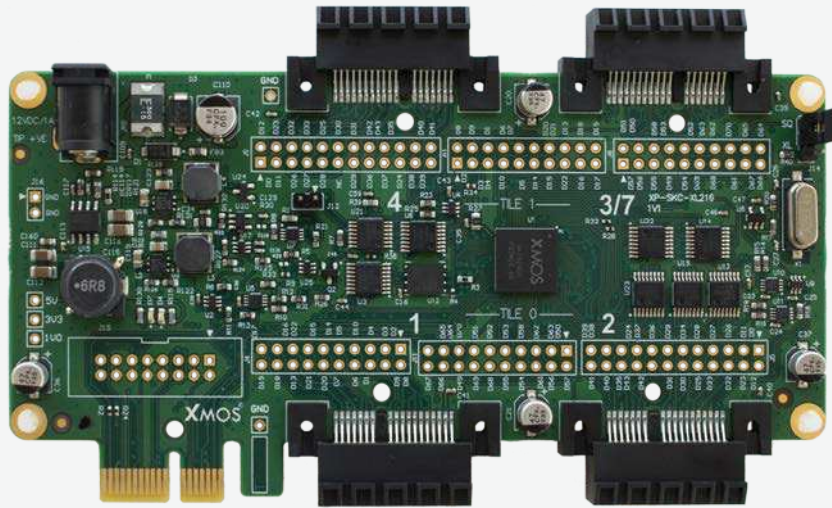
Email & Skype: info@chipsmall.com Web: www.chipsmall.com

Address: A1208, Overseas Decoration Building, #122 Zhenhua RD., Futian, Shenzhen, China



xCORE-200 General Purpose sliceKIT

MODULAR DEVELOPMENT SYSTEM KIT



FEATURES

- XL216-512-FB236 device
- 16 logical cores, 512KB SRAM, up to 2000MIPS
- Flexible core board supporting up to four digital I/O slots for sliceCARDS
- Includes Ethernet and GPIO sliceCARDS
- xTAG debug adaptor
- Rapid prototyping of systems with your set of interfaces
- Library components and application notes to get you started quickly and easily
- Supported by xTIMEcomposer software tools

The xCORE-General Purpose sliceKIT contains everything you need to start developing applications on the powerful xCORE™ multicore microcontrollers from XMOS. The xCORE-200 GP sliceKIT features our 16-core device (XL216-512-FB236), which delivers the deterministic, responsive processing required to handle a variety of peripheral interfaces, data processing and control tasks.

We also provide Ethernet, UART and I2C communications and I/O interfacing as part of the kit. These capabilities can be developed with our rapidly expanding library of sliceKIT I/O boards.

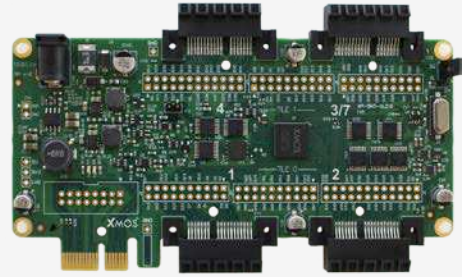
Your application development is supported by a range of library peripherals, which are seamlessly integrated into xTIMEcomposer Studio, allowing you to drag and drop your multicore microcontroller configuration into your xCORE-200 sliceKIT.

XMOS makes developing complex applications simple. sliceKIT gives you the opportunity to rapidly explore the application possibilities, and enables you to realize your designs quickly.

CONTENTS

xCORE-200 GP sliceKIT Core Board

The board provides the xCORE MCU with power, clocking, debug and expansion slots for digital I/O slices. The xTAG debug adapter connects to the host via USB 2.0 and provides pins for JTAG control, system reset, processor debug, one duplex UART link and one duplex serial xCONNECT Link.

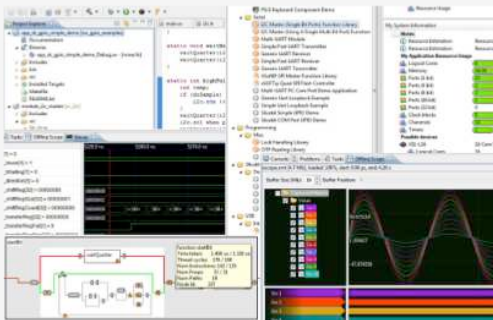


Ethernet sliceCARD

- 10/100Mb Ethernet PHY
- RJ45 connector
- MII interface to xCORE-200

GPIO sliceCARD

- Four LEDs, two push buttons
- RS232 connector
- Four-channel ADC



xTIMEcomposer Development Tools

- Eclipse based IDE
 - LLVM compiler with multicore support
 - GDB based debugger
 - Cycle accurate simulator
 - xSCOPE Software Logic Analyzer
 - Static Timing Analyzer
- Software defined peripheral libraries

ORDERING INFORMATION:

For a list of XMOS distributors, please visit www.xmos.com/support/distributors.

Part number	Contents
XK-SK-XL216-ST	XL216 core board, Ethernet sliceCARD, GPIO sliceCARD, xTAG debug adapter, 12v PSU

© 2015 XMOS LTD

Third party trademarks are hereby acknowledged.

This is a preliminary product brief, contents are subject to change



XM-009900-PB | 2015-11-30