



Chipsmall Limited consists of a professional team with an average of over 10 year of expertise in the distribution of electronic components. Based in Hongkong, we have already established firm and mutual-benefit business relationships with customers from,Europe,America and south Asia,supplying obsolete and hard-to-find components to meet their specific needs.

With the principle of “Quality Parts,Customers Priority,Honest Operation,and Considerate Service”,our business mainly focus on the distribution of electronic components. Line cards we deal with include Microchip,ALPS,ROHM,Xilinx,Pulse,ON,Everlight and Freescale. Main products comprise IC,Modules,Potentiometer,IC Socket,Relay,Connector.Our parts cover such applications as commercial,industrial, and automotives areas.

We are looking forward to setting up business relationship with you and hope to provide you with the best service and solution. Let us make a better world for our industry!



## Contact us

Tel: +86-755-8981 8866 Fax: +86-755-8427 6832

Email & Skype: info@chipsmall.com Web: www.chipsmall.com

Address: A1208, Overseas Decoration Building, #122 Zhenhua RD., Futian, Shenzhen, China



# Getting Started Guide

---



## *ZigBee<sup>®</sup> RF Module Development Kit*

This guide walks through how the XBee<sup>®</sup> & XBee-PRO<sup>®</sup> ZB modules are configured and how they interact with one another. The guide includes information on how to:

- Download and install software tools
- Configure the modules
- Perform a range test
- Explore advanced configurations
- Manage your RF network.

## *Software Setup*

---

### **Step 1: Download and Install X-CTU Software**

X-CTU is a stand-alone tool for configuring XBee modules. Download the installation file [here](#).

1. Click **Save** or **Save File**.
2. Browse to where the file is stored.
3. Double-click on the installer file and follow the X-CTU Setup Wizard.
4. When asked if you would like to check Digi's website for firmware updates, click **Yes**.
5. After the firmware updates are complete, click **Close**.
6. Start X-CTU by double-clicking on the X-CTU icon placed on your desktop or by selecting:  
**Start > Programs > Digi > X-CTU**

The X-CTU software is now available for use.

### **Step 2: Download and Install USB Drivers (Hardware USB Bus & Virtual COM Port Drivers)**

The USB interface board is a "plug-and-play" device that should be detected by the PC automatically. To interface between the modem and a PC, two drivers must be installed: a USB driver and a virtual COM port driver that makes the USB port look and perform like a physical COM port. After the modem is detected, a wizard for installing the USB driver is launched.

To install the two USB drivers:

1. Download the drivers [here](#). Save the file on the Desktop or other designated area. Extract the files for future use.

2. Plug in the RPSMA XBee-PRO and USB interface board assembly put together from the Quick Start instructions found in the kit. The Found New Hardware Wizard dialog box will load.
3. Select **Install from a specific list or location (Advanced)**; then click **Next**.
4. Select **Include this location in the search**. Browse to where you saved the extracted **WINDOWS drivers** folder.
5. Click **Next**. If a hardware installation Windows alert box pops up click **Continue Anyway**.
6. Click **Finish**.

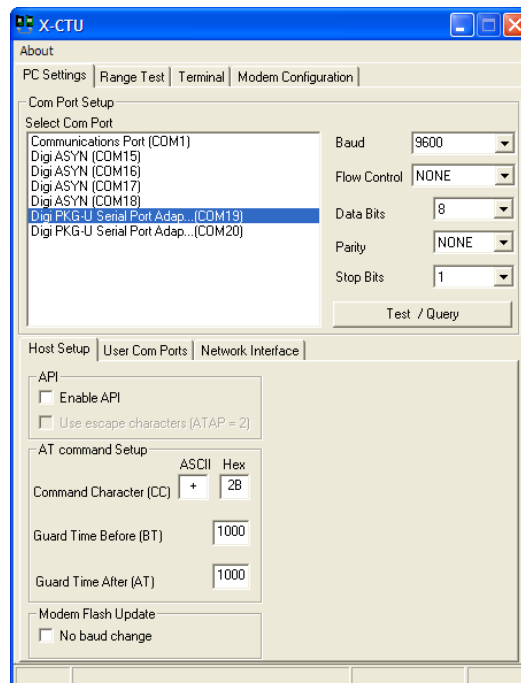
You may be prompted to install another driver, the virtual COM port driver. Repeat steps 5 and 6 to install this driver.

## Configure RF Modules

---

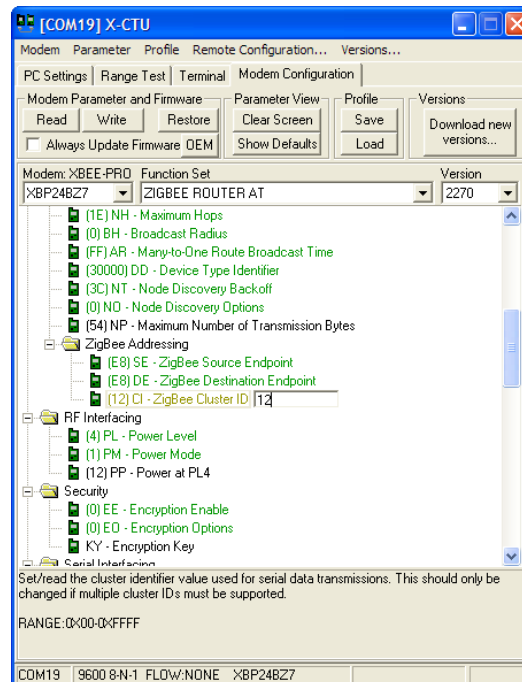
### Setting Parameters

1. Launch the X-CTU Software: **Start > Programs > Digi > X-CTU**.
2. In X-CTU, under the **PC Settings** tab, select the PC serial COM port from the displayed list. The USB port will be labeled as a Digi PKG-U Serial Port Adapter and is assigned a number based on your PC's settings.



3. Verify that the baud rate and data settings match the internal settings of the radios. The default settings for the radios are Baud Rate: 9600, Flow Control: HARDWARE, Data Bits: 8, Parity: NONE, and Stop Bits: 1.

- In the X-CTU **Modem Configuration** tab, click **Read** to display a list of the RF module configuration parameters. Parameters shown in green are still set to default. Parameters in blue have been changed. Parameters in black are read-only with the exception of the Encryption Key (KY), which is write-only.
- Select any of the module parameters you wish to change (e.g. Destination Address, Encryption, etc.) and type in or select the desired value. In this case, in order to successfully run a range test you will need to set the ZigBee Cluster ID (CI) value to 12 which can be found in the ZigBee Addressing section.



- Then click **Write** to save the changes to non-volatile memory. If you want to direct a message to a particular node, you can set the Destination Address Low/High (DL/DH) to the Source Address Low/High (SL/SH) of that node. This is referred to as unicast addressing. By default all routers are addressed to the coordinator so for this example, the addressing does not need to be changed.

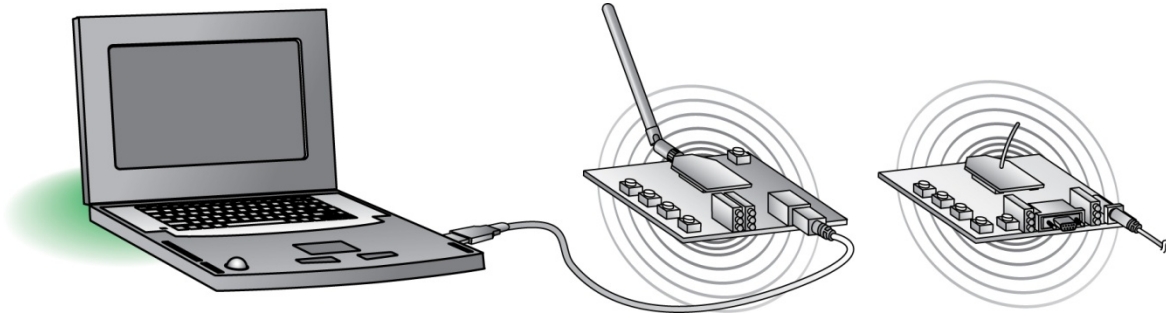
This is one of several configuration methods. Refer to the product manual for more information. If at any point you wish to restore the module back to defaults, click **Restore**.

## *Run a Range Test*

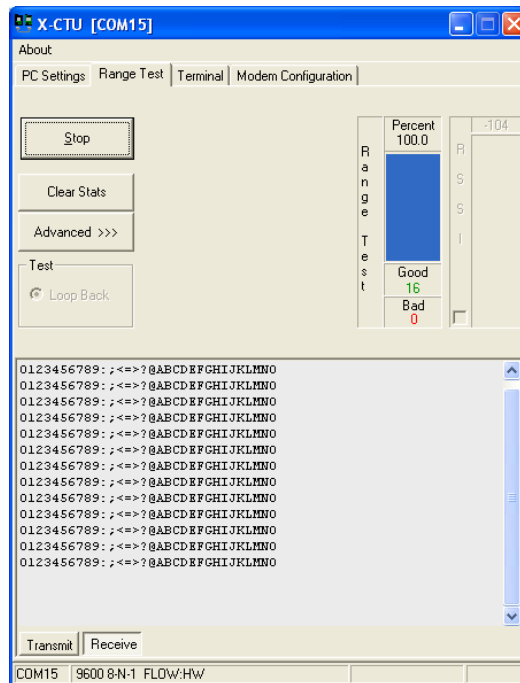
---

### **Run Range Test**

- Assemble and power on the remote unit as shown in the Quick Start instructions. The module should be the wire version whose part number ends in -002[J]. This is the coordinator.



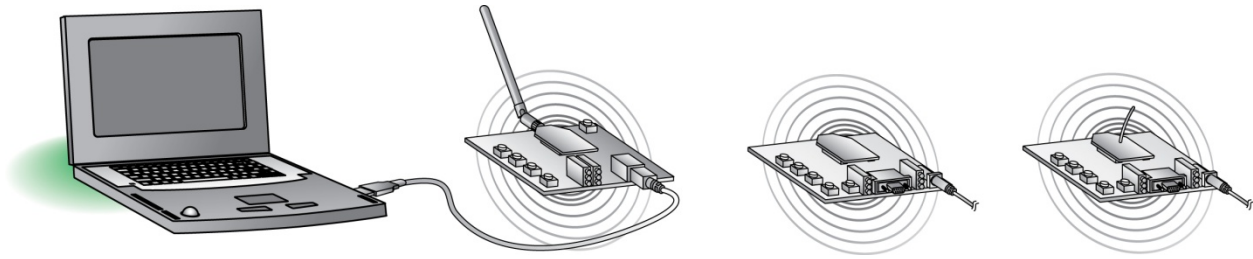
2. In X-CTU, select the **Range Test** tab.
3. (Optional) Check the **RSSI** checkbox to enable the Received Signal Strength Indicator. The RSSI value indicates the signal strength of the last packet that the radio received.
4. Click **Start** to begin the range test.



5. Monitor the link quality by reading the **Percent** section on the **Range Test** tab. This section displays the running percentage of good packets sent to the receiving radio and looped back to the base.
6. Click **Stop** to end the range test.

## Extend the Network

1. Restart the **Range Test**.
2. Move the remote further away from the base until the signal is lost.
3. Assemble and power on another module and interface board.
4. Place this radio halfway between the remote and the base as shown below.



The intermediate radio bridges the gap between the remote and the base and reestablishes communication. The network “self-heals” by redirecting communications as soon as a pathway becomes available.

**Note:** Clicking the **Advanced >>>** button in X-CTU under the Range Test tab displays several more options. If you run the range test with several mesh radios acting as intermediaries, you will want to increase the **Data receive timeout** value to compensate for the additional latency.

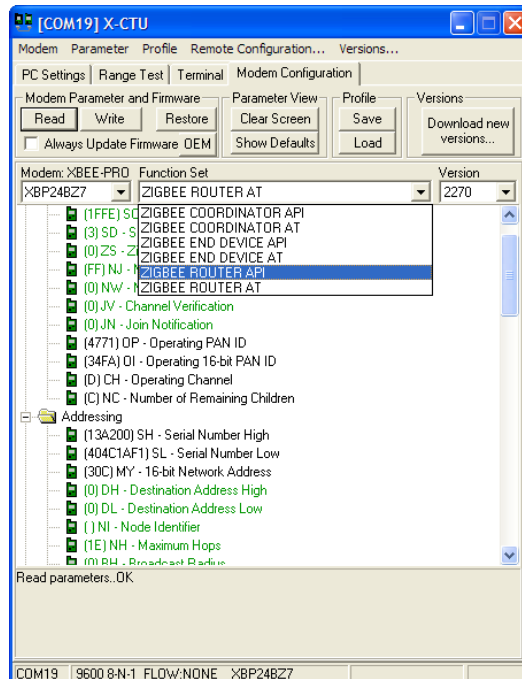
## Explore Advanced Configurations

Each XBee has the option for asynchronous sleep except the coordinator. Using X-CTU, you can set up a simple example illustrating the XBee’s sleeping capabilities.

### Change Firmware

First you will need to configure a radio for sleep. Because your remote radios are not directly connected to a PC, the easiest way to configure the modules is using the ‘over-the-air’ Remote Configuration feature in X-CTU. In order to use this feature, the XBee initiating remote commands must be configured for API mode. Change the firmware on the locally connected radio to **XBee ZB Router API** using X-CTU.

1. Click on the **Modem Configuration** tab.
2. Select the modem type **XBP24BZ7**.

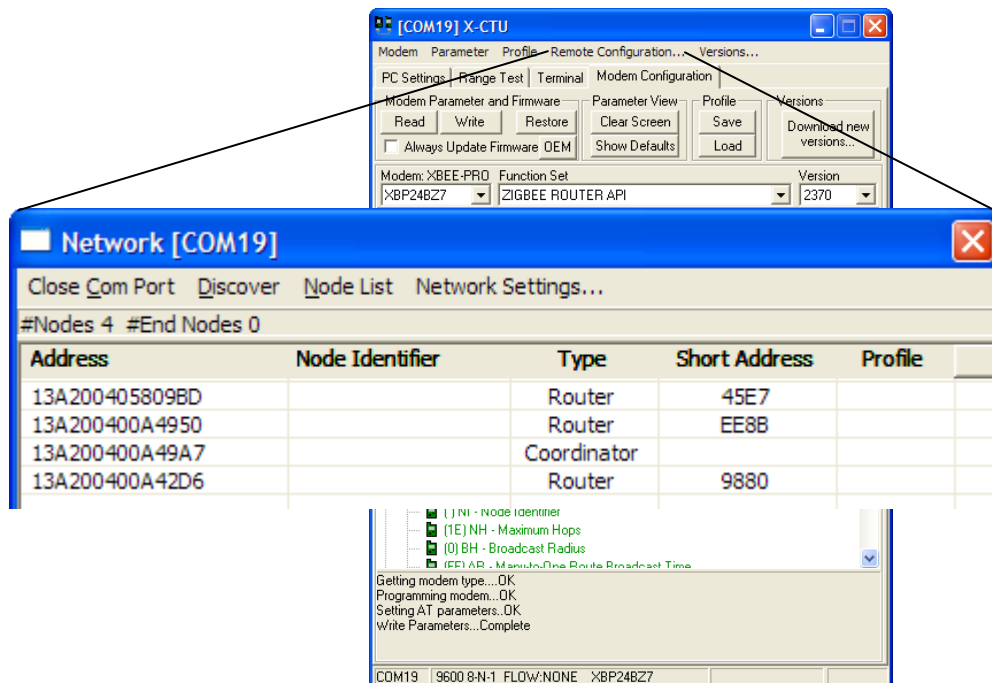


3. Choose the Function Set, **ZigBee Router API**. The latest firmware version loaded into X-CTU will populate the Version box.
4. Click the **Show Defaults** button. This helps to avoid out of range errors since some parameters have different limits based on the firmware type.
5. Check the **Always update firmware** box.
6. Click **Write**.

## Configure Remote Modules for Sleep

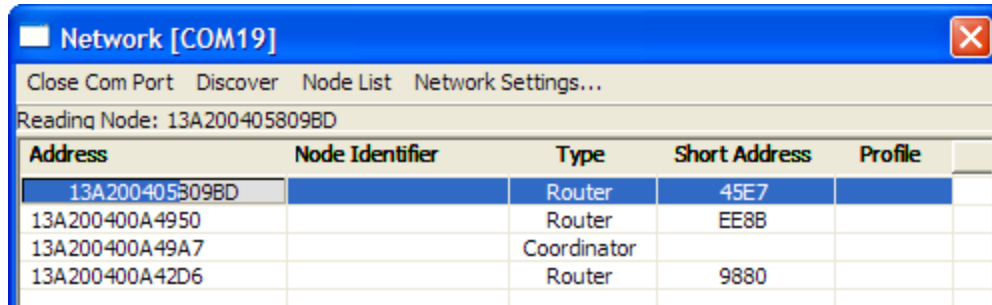
From here you can configure units locally or remotely. For demonstration purposes, follow the steps to configure your module remotely for sleep.

1. Record the 16-digit serial number on the fourth radio (found on the white label on the XBee and begins with “0013A200”...) and plug in the remaining radio/USB interface board.
2. Go to the **Modem Configuration** tab and click the **Remote Configuration** option at the top of the window.
3. Click **Open Com Port** and **Discover** from the menu bar at the top of the Network window. A list of nodes in the network will populate the screen. By selecting a particular node from the list, you can interact with it as if it were connected to the PC directly.

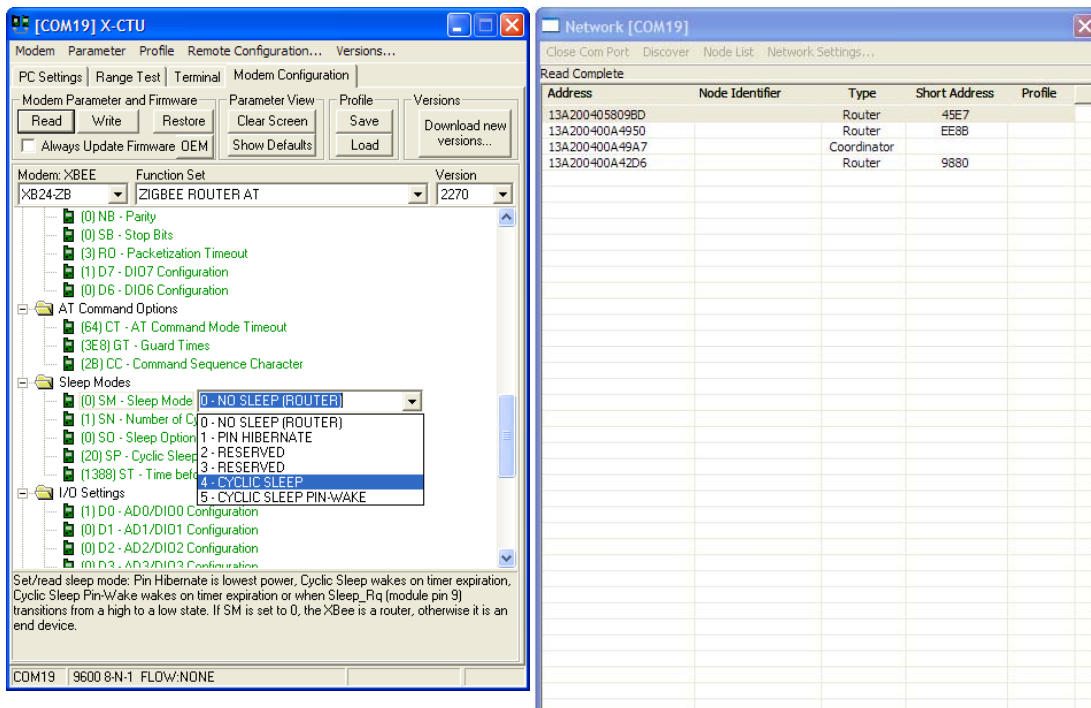


4. Select the new router from the list of discovered nodes by matching the serial number you recorded earlier.

- In the main X-CTU window, click **Read**. A blue progress bar will display in the Network window as the local device requests information from the remote unit.



- Scroll through the list of displayed parameters and find the Sleep Modes section.
- Click on **SM-Sleep Mode** and select **4-Cyclic Sleep** from the drop-down box.



- Uncheck the **Always update firmware** box. Click **Write**. Again a progress bar will be displayed in the Network window as the new parameter is written into memory.
- Using the other default sleep settings the remote radio will sleep for 320 ms at a time. To illustrate, the Associate LED should be flashing approximately 3 times per second as the radio alternately sleeps and checks for input.

Note: You can configure the modules plugged into the RS-232 interface boards remotely or you can use the RS-232 cable provided in the kit to configure them locally.

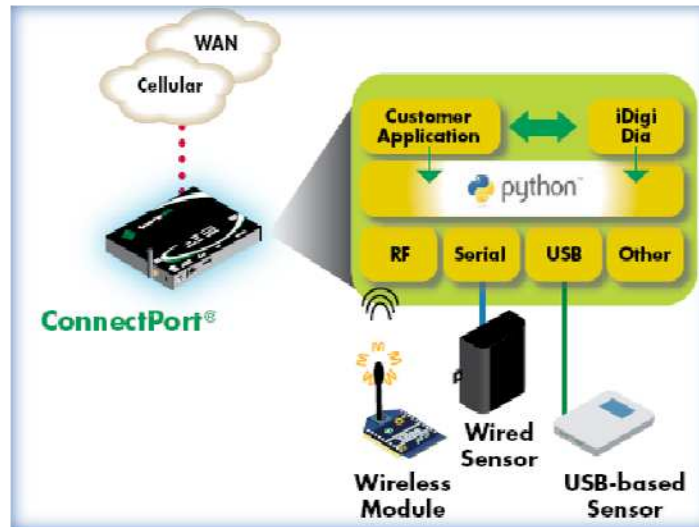


# Next Steps

---

## Manage RF Network: Gateways

Now that you have an RF network running, it is important to know how to manage the network. X-CTU software and the various RF module features provide good tools for on-site XBee configuration, firmware upgrades, and network diagnostics. However, in many cases it is necessary for the end user to be able to perform these functions from a remote location via the Internet. Digi has solved this problem by creating RF-to-Internet gateways to allow monitoring and control of your RF network through the Internet.



In the diagram above, a Digi ConnectPort gateway is used to connect an RF network (plus other peripherals) to the Internet via either the Ethernet port or a cellular WAN connection. Note that gateways are programmable and can also be used to run local monitoring/control of the RF network, with or without Internet connectivity. See [www.digi.com/products/wirelessdropinnetworking/gateways](http://www.digi.com/products/wirelessdropinnetworking/gateways) for an overview of Digi gateways.

## Cloud Connectivity

On a larger scale, the next task is to manage several gateways with multiple RF networks. Challenges with managing gateways include knowledge of IP addresses, access through firewalls, security and reliability of servers, scalability as the number of gateways grows, and ongoing maintenance for each of these functions. iDigi™ Manager Pro is Digi's device management solution.

iDigi Manager Pro is a subscription-based solution that offers robust network management capability and on-demand scalability hosted on a high-availability, commercial-class cloud platform. iDigi is monitored by Digi's operations organization continuously and provides both Tier 1 and Tier 2 support.



Home		XBee Networks				
Welcome Documentation		XBee Networks 00:13:a2:00:40:34:02:30!				
Management		Search: <input type="text"/>				
Devices		Network Gateway	Node Address	Node ID	Module Type	Product Type
XBee Networks		00409DFF-FF29789A	00:13:a2:00:40:34:02:30!	...	XBee ZB	X8 Gateway
Storage		00409DFF-FF318347	00:13:a2:00:40:0a:29:2a!		XBee ZB	X2 Gateway
Web Services Console		00409DFF-FF3238A5	00:13:a2:00:40:0a:15:b7!	...	XBee ZB	X8 Gateway
Subscriptions		00409DFF-FF3387ED	00:13:a2:00:40:0a:38:6a!	X8 Coordinator	XBee ZB	X8 Gateway
Summary			00:13:a2:00:40:0a:26:1f!	Upstairs	XBee ZB	Wall Router
Details			00:13:a2:00:40:48:59:bd!	Downstairs	XBee ZB	Smart Plug
Administration		00409DFF-FF33B89D	00:13:a2:00:40:0a:38:bf!	...	XBee ZNet 2.5	X8 Gateway
My Account		00409DFF-FF36DF43	00:13:a2:00:40:54:1d:fb!	...	XBee ZB	X4 Gateway
Messages		00409DFF-FF382CF3	00:13:a2:00:40:52:5f:7e!	X4_Gateway	XBee ZB	X4 Gateway
Operations			00:13:a2:00:40:34:0c:6d!	Smart_Plug_1	XBee ZB	Smart Plug

The image above shows the secure connection to your gateway or end device after logging on to your iDigi account. Learn more about managing your remote devices at [www.idigi.com](http://www.idigi.com). Digi provides end-to-end products and services in order to make wireless M2M easy.

## Contact Digi International

Toll-free phone U.S.A. & Canada: (866) 765-9885  
Worldwide: (801) 765-9885  
Live chat: [www.digi.com](http://www.digi.com)  
Online support: <http://www.digi.com/support/eservice/login.jsp>  
Email: [rf-experts@digi.com](mailto:rf-experts@digi.com)

PN (1P): 90002009\_A