



Chipsmall Limited consists of a professional team with an average of over 10 year of expertise in the distribution of electronic components. Based in Hongkong, we have already established firm and mutual-benefit business relationships with customers from,Europe,America and south Asia,supplying obsolete and hard-to-find components to meet their specific needs.

With the principle of “Quality Parts,Customers Priority,Honest Operation,and Considerate Service”,our business mainly focus on the distribution of electronic components. Line cards we deal with include Microchip,ALPS,ROHM,Xilinx,Pulse,ON,Everlight and Freescale. Main products comprise IC,Modules,Potentiometer,IC Socket,Relay,Connector.Our parts cover such applications as commercial,industrial, and automotives areas.

We are looking forward to setting up business relationship with you and hope to provide you with the best service and solution. Let us make a better world for our industry!



Contact us

Tel: +86-755-8981 8866 Fax: +86-755-8427 6832

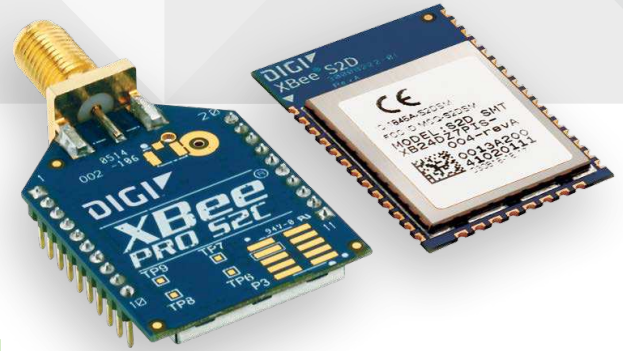
Email & Skype: info@chipsmall.com Web: www.chipsmall.com

Address: A1208, Overseas Decoration Building, #122 Zhenhua RD., Futian, Shenzhen, China





ZIGBEE® RF MODULES
FOR OEMS



XBEE® AND XBEE-PRO® ZIGBEE

Embedded ZigBee modules provide OEMs with a simple way to integrate mesh technology into their application

XBee and XBee-PRO ZigBee RF modules provide cost-effective wireless connectivity to electronic devices. They are interoperable with other ZigBee PRO feature set devices, including devices from other vendors*.

XBee and XBee-PRO ZigBee modules are ideal for applications in the energy and controls markets where manufacturing efficiencies are critical. The Serial Peripheral Interface (SPI) provides a high-speed interface and optimizes integration with embedded microcontrollers, lowering development costs and reducing time to market.

Products in the XBee family require little to no configuration or additional development. Programmable versions of the

XBee and XBee-PRO ZigBee module make customizing applications easy. Programming directly on the module eliminates the need for a separate processor. Because the wireless software is isolated, applications can be developed with no risk to RF performance or security.

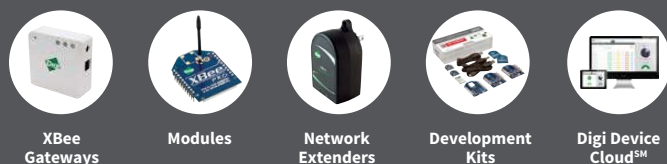
Digi's ZigBee compatible module is based on the Ember EM35x (EM357 and EM3587) system on chip (SoC) radio ICs from SiliconLabs, utilizing 32-bit ARM Cortex™ M3 processor. The S2D EM3587 version has a larger memory footprint for customers who may want to upgrade to Thread, an IPv6 based networking stack.

*Interoperability requires the ZigBee Feature Set or ZigBee PRO Feature Set to be deployed on all devices. Contact Digi Support for details.

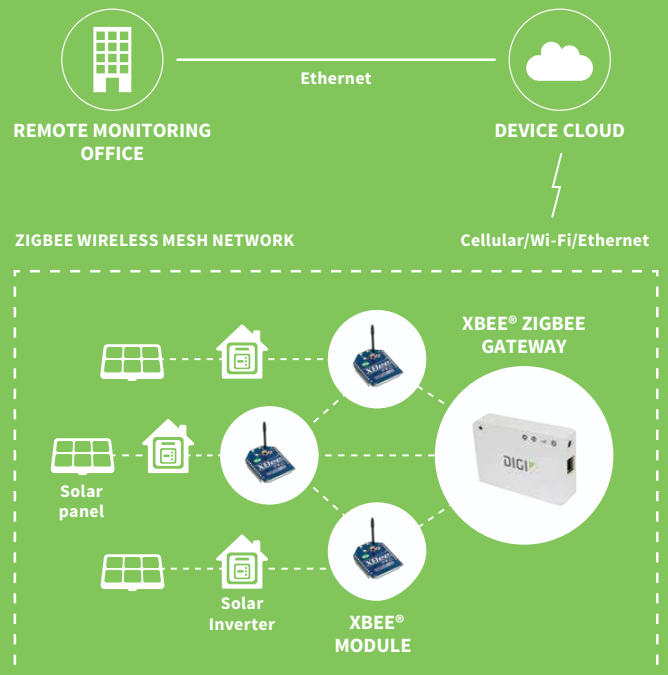
BENEFITS

- Programmable versions with on-board microprocessor enable custom ZigBee application development
- Through-Hole and Surface Mount form factors enable flexible design options
- Link budgets of 110 dB for XBee and 119 dB for XBee-PRO
- Industry-leading sleep current
- Firmware upgrades via UART, SPI or over the air (OTA)
- Thread updatable on the S2D EM3587 variant for maximum flexibility

RELATED PRODUCTS



APPLICATION EXAMPLE



SPECIFICATIONS	XBee® S2C ZigBee		XBee-PRO® S2C ZigBee		XBee® S2D ZigBee Thread Ready
	Standard	Programmable	Standard	Programmable	Standard
PERFORMANCE					
TRANSCEIVER CHIPSET	Silicon Labs EM357 SoC			Silicon Labs EM3587 Soc	
DATA RATE	RF 250 Kbps, Serial up to 1 Mbps				
INDOOR/URBAN RANGE	200 ft (60 m)		300 ft (90 m)		200 ft (60 m)
OUTDOOR/RF LINE-OF-SIGHT RANGE	4000 ft (1200 m)		2 miles (3200 m)		4000 ft (1200 m)
TRANSMIT POWER	3.1 mW (+5 dBm) / 6.3 mW (+8 dBm) boost mode		63 mW (+18 dBm)		3.1 mW (+5 dBm) / 6.3 mW (+8 dBm) boost mode
RECEIVER SENSITIVITY (1% PER)	-100 dBm / -102 dBm boost mode		-101 dBm		-100 dBm / -102 dBm boost mode
FEATURES					
SERIAL DATA INTERFACE	UART, SPI				
CONFIGURATION METHOD	API or AT commands, local or over-the-air (OTA)				
FREQUENCY BAND	ISM 2.4 GHz				
FORM FACTOR	Through-Hole, Surface Mount				Surface Mount
INTERFERENCE IMMUNITY	DSSS (Direct Sequence Spread Spectrum)				
ADC INPUTS	(4) 10-bit ADC inputs				
DIGITAL I/O	15				
ANTENNA OPTIONS	Through-Hole: PCB Antenna, U.FL Connector, RPSMA Connector, or Integrated Wire SMT: RF Pad, PCB Antenna, or U.FL Connector				
OPERATING TEMPERATURE	-40° C to +85° C				
DIMENSIONS (L X W X H) AND WEIGHT	Through-Hole: 0.960 x 1.087 in (2.438 x 2.761 cm) SMT: 0.866 x 1.33 x 0.120 in (2.199 x 3.4 x 0.305 cm)		Through-Hole: 0.960 x 1.297 in (2.438 x 3.294 cm) SMT: 0.866 x 1.33 x 0.120 in (2.199 x 3.4 x 0.305 cm)		SMT: 0.866 x 1.33 x 0.120 in (2.199 x 3.4 x 0.305 cm)
PROGRAMMABILITY					
MEMORY	N/A	32 KB Flash / 2 KB RAM	N/A	32 KB Flash / 2 KB RAM	N/A
CPU/CLOCK SPEED	N/A	HCS08 / up to 50.33 MHz	N/A	HCS08 / up to 50.33 MHz	N/A
NETWORKING AND SECURITY					
PROTOCOL	ZigBee PRO 2007, HA-Ready with support for binding/multicasting				
ENCRYPTION	128-bit AES				
RELIABLE PACKET DELIVERY	Retries/Acknowledgements				
IDS	PAN ID and addresses, cluster IDs and endpoints (optional)				
CHANNELS	16 channels		15 channels		16 channels
POWER REQUIREMENTS					
SUPPLY VOLTAGE	2.1 to 3.6V		2.7 to 3.6V		2.1 to 3.6V
TRANSMIT CURRENT	33 mA @ 3.3 VDC / 45 mA boost mode	47 mA @ 3.3 VDC / 59 mA boost mode	120 mA @ 3.3 VDC	120 mA @ 3.3 VDC	33 mA @ 3.3 VDC / 45 mA boost mode
RECEIVE CURRENT	28 mA @ 3.3 VDC / 31 mA boost mode	42 mA @ 3.3 VDC / 45 mA boost mode	31 mA @ 3.3 VDC	45 mA @ 3.3 VDC	28 mA @ 3.3 VDC / 31 mA boost mode
POWER-DOWN CURRENT	<1 µA @ 25° C	1.5 µA @ 25° C	<1 µA @ 25° C	1.5 µA @ 25° C	<3 µA at 25° C
REGULATORY APPROVALS					
FCC, IC (NORTH AMERICA)	Yes		Yes		Yes
ETSI (EUROPE)	Yes		No		Yes
RCM (AUSTRALIA AND NEW ZEALAND)	Yes		Yes		No (Coming Soon)

PART NUMBERS	DESCRIPTION
S2C MODULES	
XB24CZ7PIT-004	XBee ZigBee Through-Hole, PCB Antenna
XB24CZ7WIT-004	XBee ZigBee Through-Hole, Wire Antenna
XB24CZ7UIT-004	XBee ZigBee Through-Hole, U.FL
XB24CZ7SIT-004	XBee ZigBee Through-Hole, RPSMA
XB24CZ7PITB003	Programmable XBee ZigBee Through-Hole, PCB Antenna
XB24CZ7WITB003	Programmable XBee ZigBee Through-Hole, Wire Antenna
XB24CZ7UITB003	Programmable XBee ZigBee Through-Hole, U.FL
XB24CZ7SITB003	Programmable XBee ZigBee Through-Hole, RPSMA
XB24CZ7PIS-004	XBee ZigBee SMT, PCB Antenna
XB24CZ7RIS-004	XBee ZigBee SMT, RF Pad
XB24CZ7UIS-004	XBee ZigBee SMT, U.FL
XB24CZ7PISB003	Programmable XBee ZigBee SMT, PCB Antenna
XB24CZ7RISB003	Programmable XBee ZigBee SMT, RF Pad
XB24CZ7UISB003	Programmable XBee ZigBee SMT, U.FL
XBP24CZ7PIT-004	XBee-PRO ZigBee Through-Hole, PCB Antenna
XBP24CZ7WIT-004	XBee-PRO ZigBee Through-Hole, Wire Antenna
XBP24CZ7UIT-004	XBee-PRO ZigBee Through-Hole, U.FL
XBP24CZ7SIT-004	XBee-PRO ZigBee Through-Hole, RPSMA
XBP24CZ7PITB003	Programmable XBee-PRO ZigBee Through-Hole, PCB Antenna
XBP24CZ7WITB003	Programmable XBee-PRO ZigBee Through-Hole, U.FL
XBP24CZ7SITB003	Programmable XBee-PRO ZigBee Through-Hole, RPSMA
XBP24CZ7PIS-004	XBee-PRO ZigBee SMT, PCB Antenna
XBP24CZ7RIS-004	XBee-PRO ZigBee SMT, RF Pad
XBP24CZ7UIS-004	XBee-PRO ZigBee SMT, U.FL
XBP24CZ7PISB003	Programmable XBee-PRO ZigBee SMT, PCB Antenna
XBP24CZ7RISB003	Programmable XBee-PRO ZigBee SMT, RF Pad
XBP24CZ7UISB003	Programmable XBee-PRO ZigBee SMT, U.FL
S2D MODULES	
XB24DZ7PIS-004	XBee ZigBee - Thread Ready SMT, PCB Antenna
XB24DZ7RIS-004	XBee ZigBee - Thread Ready SMT, RF Pad Antenna
XB24DZ7UIS-004	XBee ZigBee - Thread Ready SMT, U.FL Antenna
S2C KITS	
XKA2C-Z7T-U	XBee ZigBee Cloud Kit
XKB2-Z7T-WZM	XBee ZigBee Mesh Kit, worldwide
XKB2-Z7T-ZM	XBee-PRO ZigBee Mesh Kit
S2D KIT	
XKB2-Z7T-WTZM	XBee ZigBee Mesh Kit, worldwide

DIGI SERVICE AND SUPPORT / You can purchase with confidence knowing that Digi is always available to serve you with expert technical support and our industry leading warranty. For detailed information visit www.digi.com/support.

© 1996-2016 Digi International Inc. All rights reserved.
All trademarks are the property of their respective owners.

91002937
B3/616

DIGI INTERNATIONAL WORLDWIDE HQ
877-912-3444 / 952-912-3444 / www.digi.com

DIGI INTERNATIONAL FRANCE
+33-1-55-61-98-98 / www.digi.fr

DIGI INTERNATIONAL JAPAN
+81-3-5428-0261 / www.digi-intl.co.jp

DIGI INTERNATIONAL SINGAPORE
+65-6213-5380

DIGI INTERNATIONAL CHINA
+86-21-50492199 / www.digi.com.cn

