



Chipsmall Limited consists of a professional team with an average of over 10 year of expertise in the distribution of electronic components. Based in Hongkong, we have already established firm and mutual-benefit business relationships with customers from,Europe,America and south Asia,supplying obsolete and hard-to-find components to meet their specific needs.

With the principle of "Quality Parts,Customers Priority,Honest Operation,and Considerate Service",our business mainly focus on the distribution of electronic components. Line cards we deal with include Microchip,ALPS,ROHM,Xilinx,Pulse,ON,Everlight and Freescale. Main products comprise IC,Modules,Potentiometer,IC Socket,Relay,Connector.Our parts cover such applications as commercial,industrial, and automotives areas.

We are looking forward to setting up business relationship with you and hope to provide you with the best service and solution. Let us make a better world for our industry!



Contact us

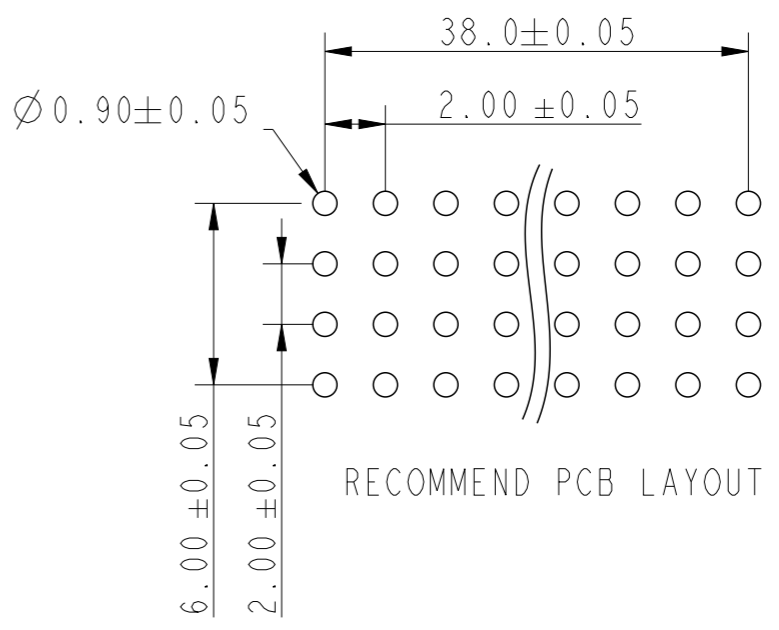
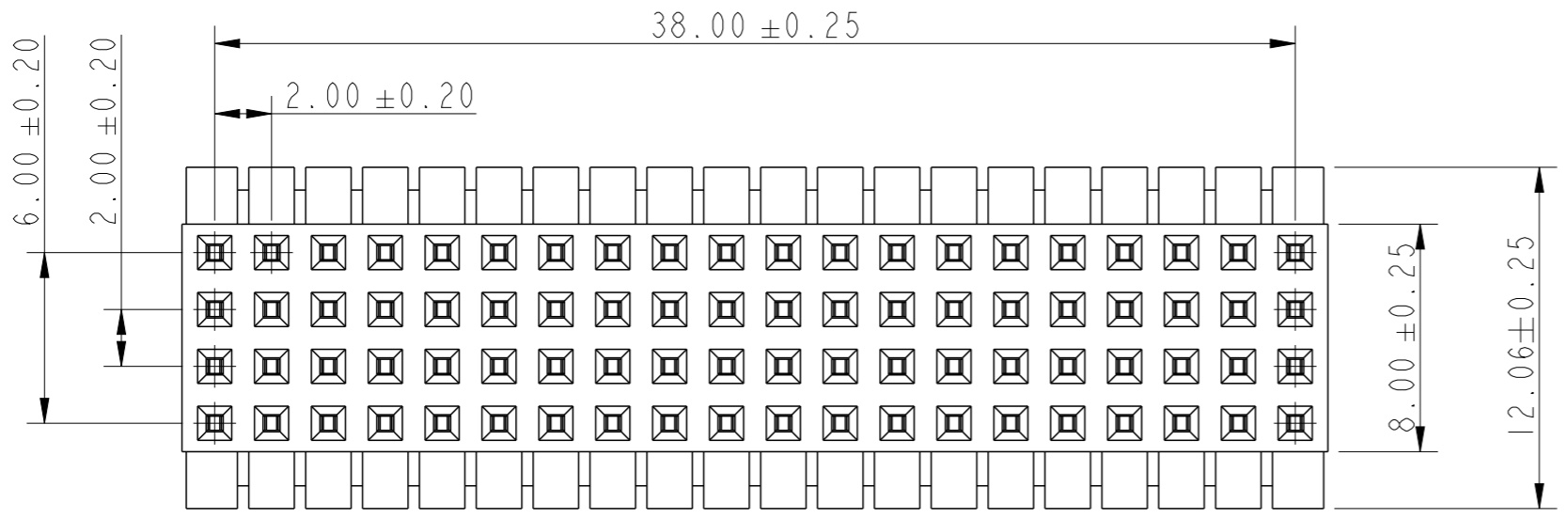
Tel: +86-755-8981 8866 Fax: +86-755-8427 6832

Email & Skype: info@chipsmall.com Web: www.chipsmall.com

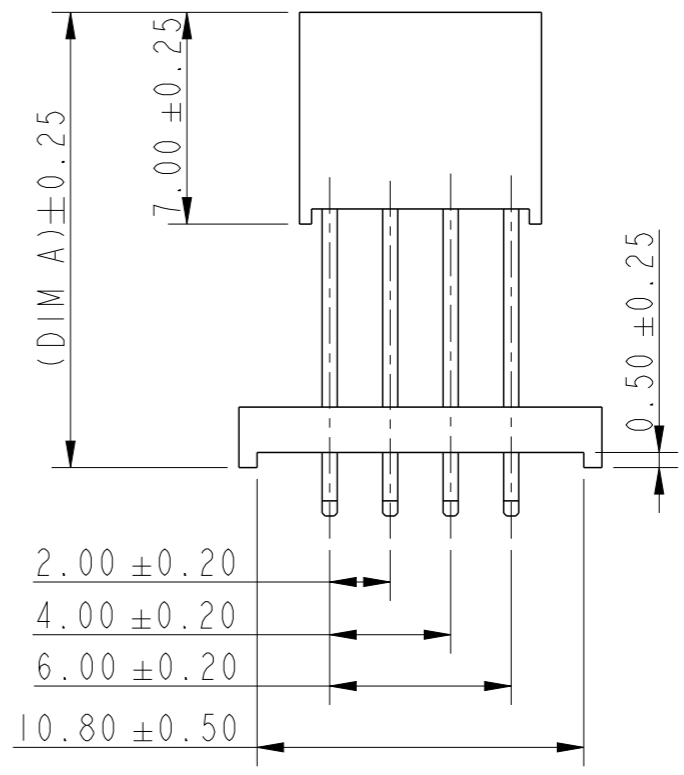
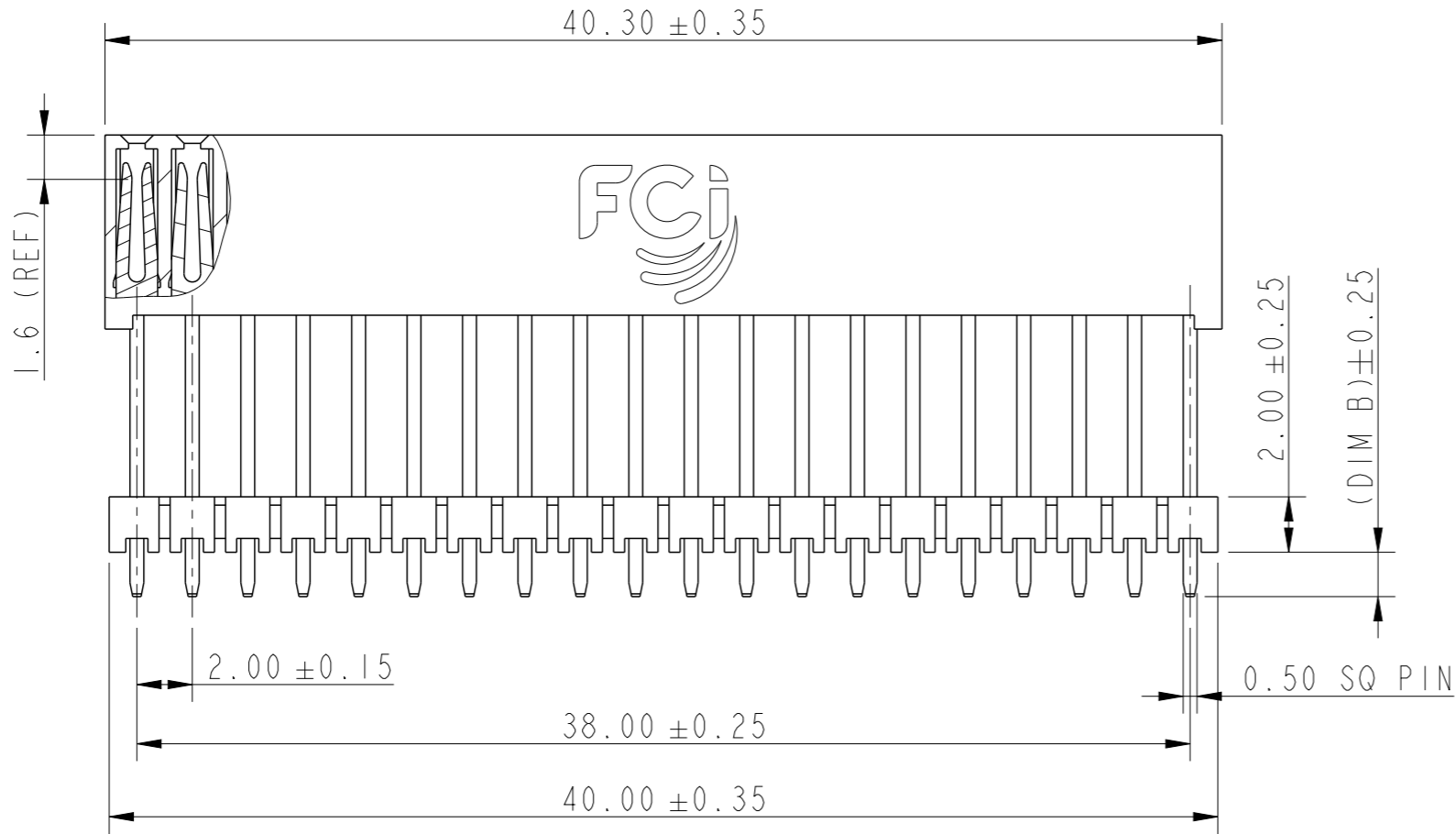
Address: A1208, Overseas Decoration Building, #122 Zhenhua RD., Futian, Shenzhen, China



A



B



C



Copyright FCI.

D

spec ref		dr	Guo-Min Sun	2014/02/24	projection	mm	size	A3	scale	4:1
tolerance std		eng	Guo-Min Sun	2014/09/16			ecn no		ELX-N-18701-1	
TOLERANCES UNLESS OTHERWISE SPECIFIED		chr	-	-			rel level		Released	
surface	✓	linear	0.X	±0.35		title Minitek 2.0mm 4 Rows Receptacle Through Hole	dwg no 10129187	rev B	0.XXX ±0.15	
			0.XX	±0.25					0.X ±0.35	
			angular	0°					±3°	www.fci.com
		appr	Rick Bian	2014/09/17	product family	-	cat. no.		-	Product - Customer Drw
							sheet 1 of 2			

PRODUCT NUMBER DESCRIPTION:
10129187 - X X X 20 X LF

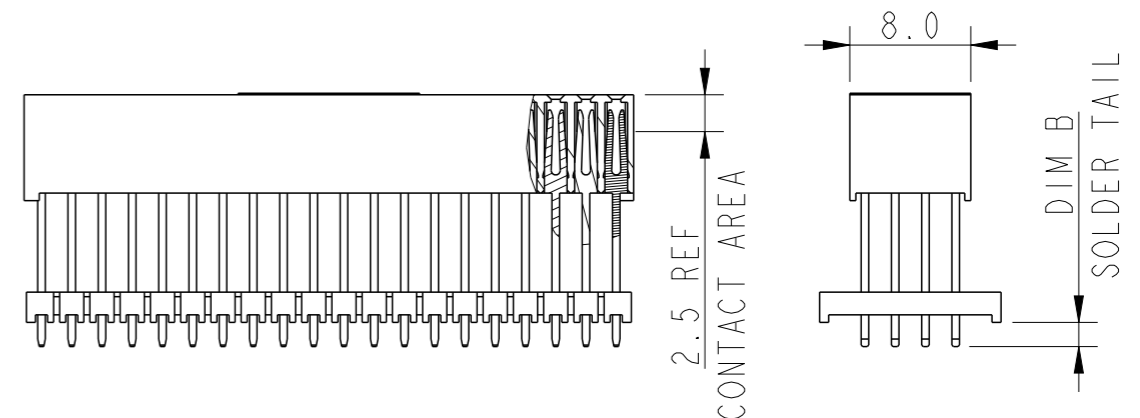
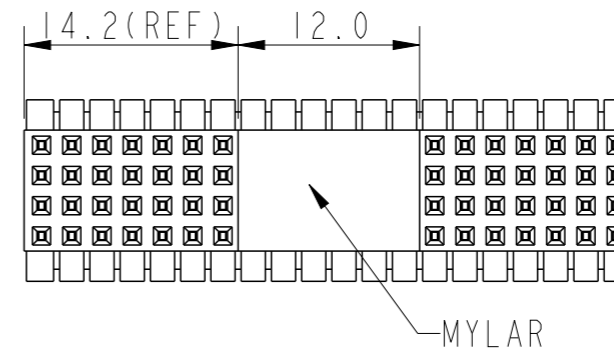
PLATING:

- 1 = 2u" Au ON CONTACT AREA;
MATING Tin 2.54u" ON CONTACT AREA.
- 2 = 10u" Au ON CONTACT AREA;
MATING Tin 2.54u" ON CONTACT AREA.
- 3 = 15u" Au ON CONTACT AREA;
MATING Tin 2.54u" ON CONTACT AREA.
- 4 = 30u" Au ON CONTACT AREA;
MATING Tin 2.54u" ON CONTACT AREA.
- 5 = 10u" Au ON CONTACT AREA;
0.5u" Au ON OTHER AREA.

- LEAD FREE
- PACKAGING OPTIONS
SEE NOTE 5
- PIN NUMBER PER ROW
- TAIL LENGTH (DIM B)
1 = 1.6
2 = 2.0
- STACK HEIGHT (DIM A)
1 : DIM A=15.05
2 : DIM A=13.05

NOTES:

1. MATERIAL HOUSING: HIGH TEMPERATURE THERMOPLASTIC
UL 94V-0, COLOR BLACK
2. MATERIAL TERMINAL: COPPER ALLOY
3. 0.2kg MIN PER PIN RETENTION IN EITHER DIRECTION.
4. THE PRODUCT SPECIFICATION REFER GS-12-1231.
5. PACKAGING;
10129187-XXXXXTLF: PACKAGING IN TRAY WITH CAP.
6. THE HOUSING WILL WITHSTAND EXPOSURE TO 260~C PEAK
TEMPERATURE FOR 20 SECONDS IN A CONVECTION, INFRA-RED
OR VAPOR PHASE REFLOW OVEN.
7. THIS PRODUCT MEETS EUROPEAN UNION DIRECTIVES AND
OTHER COUNTRY REGULATIONS AS DESCRIBED IN GS-22-008.



dr	Guo-Min Sun	2014/02/24	projection	mm	size	A3	scale	4:1
eng	Guo-Min Sun	2014/09/16			product family	ecn no	ELX-N-18701-1	
chr	-	-				rel level	Released	
appr	Rick Bian	2014/09/17			cat. no.	10129187	rev	B
www.fci.com		Product - Customer Drw		sheet 2 of 2				