



Chipsmall Limited consists of a professional team with an average of over 10 year of expertise in the distribution of electronic components. Based in Hongkong, we have already established firm and mutual-benefit business relationships with customers from,Europe,America and south Asia,supplying obsolete and hard-to-find components to meet their specific needs.

With the principle of “Quality Parts,Customers Priority,Honest Operation,and Considerate Service”,our business mainly focus on the distribution of electronic components. Line cards we deal with include Microchip,ALPS,ROHM,Xilinx,Pulse,ON,Everlight and Freescale. Main products comprise IC,Modules,Potentiometer,IC Socket,Relay,Connector.Our parts cover such applications as commercial,industrial, and automotives areas.

We are looking forward to setting up business relationship with you and hope to provide you with the best service and solution. Let us make a better world for our industry!



Contact us

Tel: +86-755-8981 8866 Fax: +86-755-8427 6832

Email & Skype: info@chipsmall.com Web: www.chipsmall.com

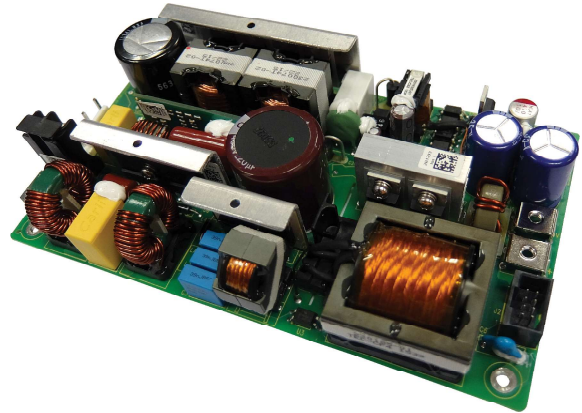
Address: A1208, Overseas Decoration Building, #122 Zhenhua RD., Futian, Shenzhen, China



500W Configurable AC-DC Power Supplies

Features

- ◆ ITE & Medical Certifications (2 x MOPP)
- ◆ Class I and Class II operation with Level B EMC
- ◆ Compact 4 x 7.1" Footprint
- ◆ Suitable for B and BF Rated Equipment
- ◆ Five Year Warranty



Key Market Segments & Applications

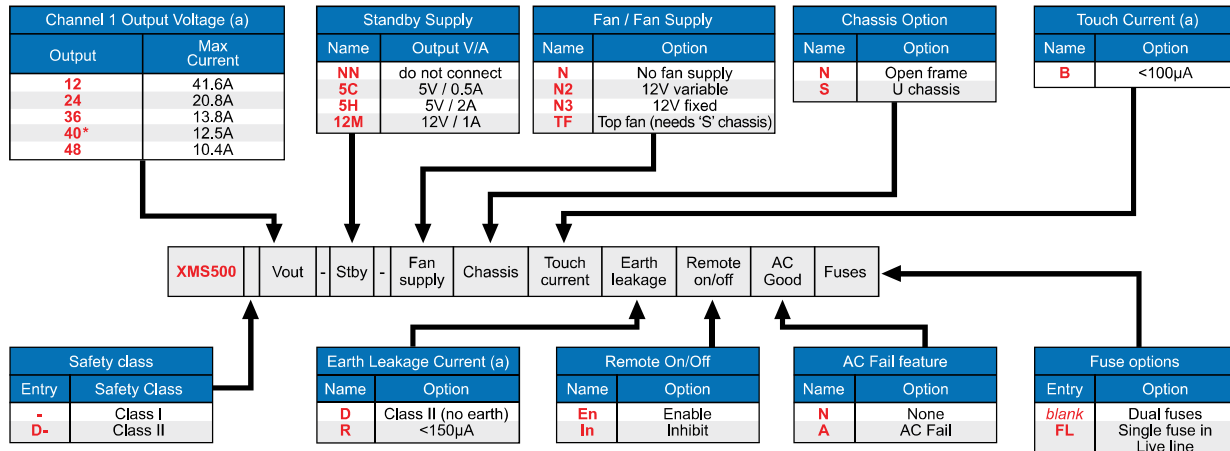


Specifications ⁽¹⁾		
Model	XMS500	
Input Voltage range		90 - 264VAC (47 - 63Hz)
Inrush Current (Cold start at 264VAC input)	A	<40A
Hold Up Time (Typ)	ms	≥16ms
Harmonic Compliance	-	EN/IEC61000-3-2 compliant. 0.97 at 110Vac input
Leakage Current	uA	<150uA (Class I construction) - See model selector
Touch Current (enclosure leakage)	uA	<100uA - See model selector
Ripple & Noise	mV (pk-pk)	≤1%
Total Regulation	%	≤2% (Line, load and temperature)
Short Circuit Protection	-	Hiccup mode, automatic recovery
Oversvoltage Protection	V	Latching (unit shutdown), cycle AC input to reset
Efficiency	%	Up to 92% (230VAC input, 100% load)
Operating Temperature	°C	0 to +70°C, derate linearly to 50% load from 50 to 70°C. -20°C start-up
Storage Temperature	°C	-40 to +85°C (+70°C for top fan versions)
Humidity (non condensing)	%RH	5 - 95%RH
Cooling	-	Forced air (500W): 1m/s airflow or top mount fan; Convection (250W minimum) ⁽²⁾
Withstand Voltage	VAC	Input to Ground 1.5kVAC (1xMOPP) Class I only, Input to Output 4kVAC (2xMOPP), Output to Ground 1.5kVAC (1xMOPP) Class I only
Insulation Class	-	Class I or Class II - See model selector
Vibration (non operating)	-	10 to 200Hz at 2G. Conforms to IEC610068-2-6, IEC68-2-6 MIL-STD-810G, Method 514.4, Pro I, Cat 1,9
Shock	-	±3 x 30g shocks in each plane, total 18 shocks, 30g shock = 11ms (±0.5msec), half sine Conforms to EN60068-2-27, EN60068-2-47, IEC68-2-27, IEC68-2-47, JIS C0041-1987. Conforms to MIL-STD-810G, Method 516.6, Pro I, IV, VI
Safety Agency Certifications	-	IEC/EN/UL60950-1 and 60601-1. ANSI/AAMI ES60601-1. Designed to meet IEC61010-1
Altitude	m	-200 to 5000m operational (3000m for 60601-1) (-200 to 5000m storage/transportation)
Conducted & Radiated EMI	-	EN55011 / EN55032 Class B, EN60601-1-2:2015 4th Edition
Immunity	-	EN61000-4-2, -3, -4, -5, -6, -8, -11, -12 and -14, EN60601-1-2:2015 4th Edition
Weight (Typ)	g	See application notes
Size (WxLxH) Open frame version	In (mm)	4 x 7.1 x 1.46" (102 x 180 x 37mm)
Warranty	yrs	Five years
Connectors	-	Molex as standard with separate ground faston See Installation Manual for part numbers

Note: 1. See website for detailed specifications

2. Higher convection rating possible depending on configuration, mounting orientation, and specific application operating conditions. Please contact Tech Support with detailed requirements.

How to Create a Product Description



(a) - additional variants available, consult sales office

*Confirm availability of required product with sales office

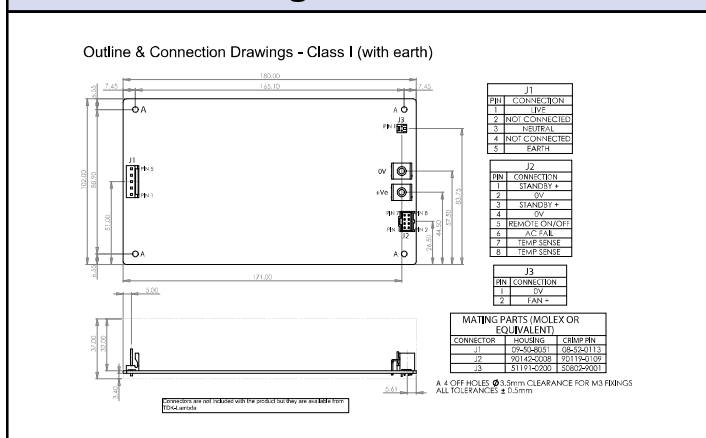
Quick Selector (Standard models)*

Output		Cover / Chassis / Fan type	Class I		Class II	
Volts	Current		Product Description	Order Code	Product Description	Order Code
12V	41.6A	Open Frame	XMS500-12-5H-N2NBRInA	XMS5001M	XMS500D-12-5H-N2NBDInA	XMS50024
		U chassis	XMS500-12-5H-N2SBRInA	XMS5003X	XMS500D-12-5H-N2SBDInA	XMS5004F
		Top fan	XMS500-12-5H-TFSBRInA	XMS5005Y	XMS500D-12-5H-TFSBDInA	XMS5006G
24V	20.8A	Open Frame	XMS500-24-5H-N2NBRInA	XMS50070	XMS500D-24-5H-N2NBDInA	XMS5008H
		U chassis	XMS500-24-5H-N2SBRInA	XMS50091	XMS500D-24-5H-N2SBDInA	XMS500BN
		Top fan	XMS500-24-5H-TFSBRInA	XMS500C6	XMS500D-24-5H-TFSBDInA	XMS500DP
36V	13.8A	Open Frame	XMS500-36-5H-N2NBRInA	XMS500FR	XMS500D-36-5H-N2NBDInA	XMS500G8
		U chassis	XMS500-36-5H-N2SBRInA	XMS500HS	XMS500D-36-5H-N2SBDInA	XMS500JT
		Top fan	XMS500-36-5H-TFSBRInA	XMS500KB	XMS500D-36-5H-TFSBDInA	XMS500LV
48V	10.4A	Open Frame	XMS500-48-5H-N2NBRInA	XMS500MC	XMS500D-48-5H-N2NBDInA	XMS500NW
		U chassis	XMS500-48-5H-N2SBRInA	XMS500PX	XMS500D-48-5H-N2SBDInA	XMS500RY
		Top fan	XMS500-48-5H-TFSBRInA	XMS500SG	XMS500D-48-5H-TFSBDInA	XMS500T0

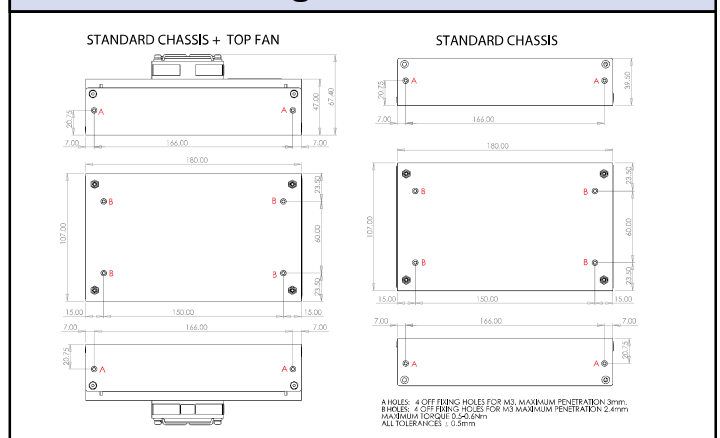
*Note: Additional variants available - see 'How To Create A Product Description'

Standard models include: '5H' standby (5V / 2A), 'N2' fan supply (12V / 0.3A variable supply voltage) [except on Top fan variants], 'B' touch current (<100µA), 'In' remote on/off (inhibit) and 'A' AC Fail. Class I standard models include 'R' earth leakage (<150µA).

Outline Drawing



Outline Drawing



For Additional Information, please visit
us.tdk-lambda.com/lp/products/xms-series.htm

