



Chipsmall Limited consists of a professional team with an average of over 10 year of expertise in the distribution of electronic components. Based in Hongkong, we have already established firm and mutual-benefit business relationships with customers from,Europe,America and south Asia,supplying obsolete and hard-to-find components to meet their specific needs.

With the principle of “Quality Parts,Customers Priority,Honest Operation,and Considerate Service”,our business mainly focus on the distribution of electronic components. Line cards we deal with include Microchip,ALPS,ROHM,Xilinx,Pulse,ON,Everlight and Freescale. Main products comprise IC,Modules,Potentiometer,IC Socket,Relay,Connector.Our parts cover such applications as commercial,industrial, and automotives areas.

We are looking forward to setting up business relationship with you and hope to provide you with the best service and solution. Let us make a better world for our industry!



Contact us

Tel: +86-755-8981 8866 Fax: +86-755-8427 6832

Email & Skype: info@chipsmall.com Web: www.chipsmall.com

Address: A1208, Overseas Decoration Building, #122 Zhenhua RD., Futian, Shenzhen, China



Faster.
Easier.
Better.



Enclosure Power Distribution Units (PDUs) (continued)



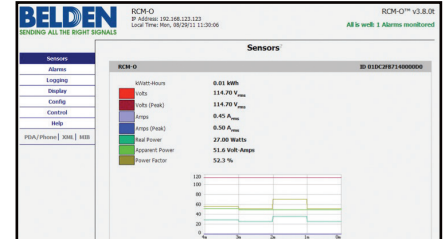
PDU Selection: Basic, with Local Monitoring and Intelligent

- PDU mounted display option for local current or power monitoring, making phase balancing easier (the PDU itself is not phase balancing)

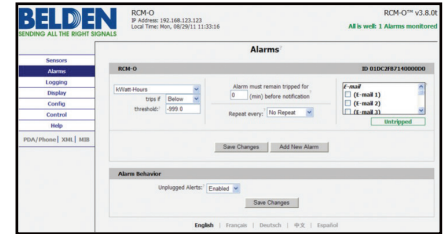
Intelligent PDU Options and Features

- Remote aggregate, circuit or receptacle power monitoring for granular PUE measurement
- Switched (on/off) options allow remote outlet management and equipment reboot with sequential delay features; avoid power interruption due to inrush current, equipment start up in desired sequence

- Highly secure access with admin, control and view-only accounts
- Intuitive Ethernet-based firmware with email alarm or SNMP trap features prevents downtime with early notification of power threshold breaches
- SNMP (MIB) enabled for compatibility with all leading DCIM packages
- Integrated environmental monitoring capabilities; monitor temperature, air flow, humidity and dew point via optional connected sensors
- Internal memory for up to two week of trending of critical parameters for clear understanding of power allocation and usage



PDU Firmware, Trending Page



PDU Firmware, Alarm Setting Page



Intelligent PDU Communication and Environmental Monitoring Ports

Belden PDU Type	Intelligent-Remote Monitoring (3)					
	Local Display/Monitoring	Current	Power Circuit Level	Environmental Port (4)	Power Outlet Level (5)	Outlet Switched (6)
Basic (B)	No	No	No	No	No	No
Local (L)	Yes	No	No	No	No	No
Current (C)	Yes (1)	Yes	No	No	No	No
Power (P)	Yes (2)	Yes	Yes	Yes	No	No
Power Outlet (O)	Yes (2)	Yes	Yes	Yes	Yes	No
Switched (S)	Yes (2)	Yes	Yes	Yes	Optional	Yes

Notes:

- (1) Local current/amp meter, monitoring at circuit level for multi-circuit PDU.
- (2) Local power meter provides Amps, Volts, Watts, Volt-Amps, kWh and Power Factor.
- (3) Remote functions (IP-based) accessible via web browser.
- (4) Remote IP-based environmental monitoring, (2) port per PDU. Requires external sensor, refer to accessories (p. 78) for selection.
- (5) Remote IP-based receptacle level monitoring, Amps, Volts, Watts, kWh.
- (6) Remote IP-based receptacle level switching (on/off) with configurable time delay.

Power, Cooling and Air Handling Relations

PDU Nameplate Current Rating (A)	Branch Circuit Rating (A)	Nameplate Volts (V)	Volts Actual Delivered (V)	Phase*	PDU Nominal Power Watts (W)	PDU De-Rated Power (W)	PDU De-Rated Power (kW)	PDU De-Rated Power (BTU/hr)	AC Tons** (BTU/12000)	Air Volume*** (120 CFM* kW)
12	15	125	120	1	1,800	1,440	1.4	4,916	0.41	168
16	20	125	120	1	2,400	1,920	1.9	6,555	0.55	228
24	30	125	120	1	3,600	2,880	2.9	9,832	0.82	348
16	20	250	208	1	4,160	3,328	3.3	11,362	0.95	396
24	30	250	208	1	6,240	4,992	5.0	17,043	1.42	600
35	50	250	208	1	10,400	7,280	7.3	24,854	2.07	876
48	60	250	208	1	12,480	9,984	10.0	34,085	2.84	1,200
16	20	230	230	1	4,600	3,680	3.7	12,564	1.05	444
24	30	230	230	1	6,900	5,520	5.5	18,845	1.57	660
48	60	230	230	1	13,800	11,040	11.0	37,691	3.14	1,320
16	20	120/208	208	3	7,197	5,757	5.8	19,656	1.64	696
24	30	120/208	208	3	10,795	8,636	8.6	29,484	2.46	1,032
35	50	120/208	208	3	17,992	12,594	12.6	42,997	3.58	14,712
48	60	120/208	208	3	21,616	17,293	17.3	58,968	4.91	2,076
80	100	120/208	208	3	36,027	28,821	28.8	98,279	8.19	3,456
100	125	120/208	208	3	45,033	36,027	36.0	122,849	10.24	4,320
120	150	120/208	208	3	54,040	43,232	43.2	147,419	12.28	5,184
16	20	230/400	230	3	13,856	11,085	11.0	37,691	3.14	1,320
24	30	230/400	230	3	20,785	16,628	16.6	56,563	4.71	1,992
*3-Phase power is calculated by multiplying single phase by the square root of 3 or 1.73.										
**Tons of air conditioning required to remove heat from associated IT load.										
***The volume of air that is typically required by the IT equipment for each kW of IT load can typically range from 80 to 140 CFM. 120 CFM was used for calculation.										



Single-Phase PDUs



Front View 9LF1-101001



Rear View 9LF1-101001



9LB2-301001

UL Listed Single-Phase PDUs

Type: B = Basic; L = Local Monitored

Belden Part #	Type	De-Rated Power (kW)	Amps (A)/ Volts (V)	Plug Type	Total Receptacle	Receptacle Type/Qty	Thermal Circuit Breaker	On-Off Switch	Surge Suppression	Monitoring-Local	Mounting (4)	Dimensions L x W x D (in.)
9BF1-061001	B	1.4	15/120	5-15P	6	5-15R/6	Yes	Yes	No	No	Rack - 19"	17 x 1.72 x 3.75
9BF1-061002	B	1.4	15/120	5-15P	6	5-15R/6	Yes	Yes	Yes	No	Rack - 19"	17 x 1.72 x 3.75
9BF1-081001	B	1.4	15/120	5-15P	8	5-15R/8	Yes	Yes	No	No	Vertical	24 x 1.61 x 1.61
9LF1-101001	L	1.4	15/120	5-15P	10	5-15R/10	Yes	Yes	No	Power	Rack - 19"	17 x 1.72 x 4.5
9BF1-141001	B	1.4	15/120	5-15P	14	5-15R/14	Yes	Yes	Yes	No	Vertical	47.5 x 1.61 x 1.61
9BG2-081001	B	1.9	20/120	L5-20P	8	5-20R/8	Yes	Yes	No	No	Vertical	24 x 1.61 x 1.61
9BG1-101001	B	1.9	20/120	5-20P	10	5-20R/10	Yes	Yes	Yes	No	Rack - 19"	17 x 1.72 x 3.75
9LG1-101001	B	1.9	20/120	5-20P	10	5-20R/10	Yes	No	No	Power	Rack - 19"	17 x 1.72 x 4.5
9BG1-141001	B	1.9	20/120	5-20P	14	5-20R/14	Yes	Yes	No	No	Vertical	47.5 x 1.61 x 1.61
9BG2-141001	B	1.9	20/120	L5-20P	14	5-20R/14	Yes	Yes	No	No	Vertical	47.5 x 1.61 x 1.61
9BG1-141002	B	1.9	20/120	L5-20P	14	5-20R/14	Yes	No	Yes	No	Vertical	47.5 x 1.61 x 1.61
9BG2-141002	B	1.9	20/120	L5-20P	14	5-20R/14	Yes	No	Yes	No	Vertical	47.5 x 1.61 x 1.61
9LH2-241001	L	2.8	30/120	L5-30P	24	5-20R/24	Magnetic	Breaker	No	Power	Vertical	66.25 x 2 x 2
9LB2-121001	L	5	30/208	L6-30P	12	C-13/12	Magnetic	Breaker	No	Power	Rack - 19"	17 x 1.72 x 6.5
9LB2-301001	L	5	30/208	L6-30P	30	C-13/24 + C-19/6	Magnetic	Breaker	No	Power	Vertical	66.25 x 2 x 2

- Notes:
- (1) Standard cord length is 10 ft. For other lengths, change dd digit in part # (ex: 9PB2-30dd01 would be 9PB2-300801 = 8 ft). Available in 2, 4, 6, 8, 10, 15, 20 ft.
 - (2) Standard cord exits from chassis face; top of chassis exit available on request.
 - (3) Standard PDU chassis color is black, custom color overlay available on request.



Front View 9PG2-101001



Rear View 9PG2-101001



9OB2-241001

UL Listed Single-Phase PDUs

Type: P = Remote Power Monitored; O = Outlet Monitored

Belden Part #	Type	De-Rated Power (kW)	Amps (A)/ Volts (V)	Plug Type	Total Receptacle	Receptacle Type/Qty	Thermal Circuit Breaker	On-Off Switch	Monitoring-Local/Remote	Environmental Monitoring	Mounting (4)	Dimensions L x W x D (in.)
9PG2-101001	P	1.9	20/120	5-20P	10	5-20R/10 + 0	Magnetic	No	Power/Aggregate	Yes - 2 Port	Rack - 19"	17 x 1.72 x 6.5
9PB2-301001	P	5	30/208	L6-30P	30	C-13/24 + C-19/6	Magnetic	Breaker	Power/Circuit Breaker	Yes - 2 Port	Vertical	66.25 x 2 x 2.25
9PB2-301002	P	5	30/208	L6-30P	30	C-13L/24 + C-19L/6	Magnetic	Breaker	Power/Circuit Breaker	Yes - 2 Port	Vertical	72 x 2 x 2.25
9PB2-421001	P	5	30/208	L6-30P	42	C-13/36 + C-19/6	Magnetic	Breaker	Power/Circuit Breaker	Yes - 2 Port	Vertical	70 x 2 x 2.25
9OB2-241001	O	5	30/208	L6-30P	24	C-13L/18 + C-19L/6	Magnetic	Breaker	Power/Circuit Breaker + Outlet	Yes - 2 Port	Vertical	72 x 2.25 x 2.25

- Notes:
- (1) Standard cord length is 10 ft. For other lengths, change dd digit in part # (ex: 9PB2-30dd01 would be 9PB2-300801 = 8 ft). Available in 2, 4, 6, 8, 10, 15, 20 ft.
 - (2) Standard cord exits from chassis face; top of chassis exit available on request.
 - (3) C-13L, L refers to receptacles with locking feature.
 - (4) Standard PDU chassis color is black, custom color overlay available on request.
 - (5) These PDUs have no Surge Suppression.

Faster.
Easier.
Better.



3-Phase PDUs



9LI2-301001



ZPB248-106IBBPS15

UL Listed 3-Phase PDUs

Type: B = Basic; L = Local Monitored

Belden Part #	Type	De-Rated Power (kW)	Amps (A) x Phases	Input Volts (V)/ Output Volts (V)	Plug Type	Total Receptacle	Receptacle Type/Qty(s)	Circuit Breaker (Amp/Qty)	Monitoring-Local/Remote	Mounting	Dimensions L x W x D (in.)
9LI2-301001	L	5.7	20 x 3 Ph.	120/208 WYE/208	L21-20P	30	C-13/24 + C-19/6	No	Amp (X,Y,Z)/No	Vertical	66.25 x 2 x 2 Dog House - No
9LJ2-301001	L	8.6	30 x 3 Ph.	120/208 WYE/208	L21-30P	30	C-13/24 + C-19/6	20/3D	Amp (X,Y,Z)/No	Vertical	66.25 x 2 x 2 Dog House - No
9BJ2-331001	B	8.6	30 x 3 Ph.	120/208 WYE/120 & 208	L21-30P	33	C-13/24 + C-19/3 + 5-20R/6	20/3D	Amp (X,Y,Z)/No	Vertical	66.25 x 2 x 2 Dog House - No
9LC2-301001	L	11	20 x 3 Ph.	230/400 WYE/230	L22-20P	30	C-13/24 + C-19/6	No	Amp (X,Y,Z)/No	Vertical	66.25 x 2 x 2 Dog House - No
9LC3-301001	L	11	20 x 3 Ph.	230/400 WYE/230	4P, 5W	30	C-13/24 + C-19/6	No	Amp (X,Y,Z)/No	Vertical	66.25 x 2 x 2 Dog House - No
9LD2-301001	L	16.6	30 x 3 Ph.	230/400 WYE/230	L22-30P	30	C-13/24 + C-19/6	20/3D	Amp (X,Y,Z)/No	Vertical	66.25 x 2 x 2 Dog House - Yes
9LD3-301001	L	16.6	30 x 3 Ph.	230/400 WYE/230	4P, 5W	30	C-13/24 + C-19/6	20/3D	Amp (X,Y,Z)/No	Vertical	66.25 x 2 x 2 Dog House - Yes
9BL3-121001	B	17.3	60 x 3 Ph.	208 Delta/208	3P, 4W	12	C-19/12 + 0	20/6	Breaker/No	Rack - 19"	17 x 3.4 x 9 Dog House - No
9BL3-241001	B	17.3	60 x 3 Ph.	208 Delta/208	3P, 4W	24	C-13/12 + C-19/12	20/6	Breaker/No	Vertical	66.25 x 2.3 x 3.45 Dog House - No

Notes:

- (1) Standard cord length is 10 ft. For other lengths, change dd digit in part # (ex: 9PB2-30dd01 would be 9PB2-300801 = 8 ft). Available in 2, 4, 6, 8, 10, 15, 20 ft.
- (2) Standard cord exits from chassis face; top of chassis exit available on request.
- (3) C-13L, L refers to receptacles with locking feature.
- (4) Ex: 20/3D, D refers to double pole breakers (20A in this case).
- (5) Standard PDU chassis color is black, custom color overlay available on request.
- (6) These PDUs have no Surge Suppression or On/Off Switch.
- (7) PDU "Dog House" hosts the circuit breaker and protrude from the PDU chassis by 1.44".



9PC2-441001



9OJ2-301001

UL Listed 3-Phase PDUs

Type: C = Remote Current Monitored; P = Power Monitored; O = Outlet Monitored

Belden Part #	Type	De-Rated Power (kW)	Amps (A) x Phases	Input Volts (V)/ Output Volts (V)	Plug Type	Total Receptacle	Receptacle Type/Qty(s)	Circuit Breaker (Amp/Qty) (4)	Monitoring-Local/Remote	Environ. Monitoring	Dimensions L x W x D (in.)
9PC2-441001	P	5.8	20 x 3 Ph.	120/208 WYE/208	L21-20P	44	C-13/36 + C-19/6 + 5-20R/2	No	Power/X, Y, Z	Yes - 2 Port	70 x 2 x 2.25 Dog House - No
9CJ2-301001	C	8.6	30 x 3 Ph.	120/208 WYE/208	L21-30P	30	C-13/24 + C-19/6	20/3D	Current/Current	No	66.25 x 2 x 2 Dog House - Yes
9OJ2-301001	O	8.6	30 x 3 Ph.	120/208 WYE/208	L21-30P	30	C-13L/24 + C-19L/6	20/3D	Power/X, Y, Z + Outlet	Yes - 2 Port	72 x 2.25 x 2.25 Dog House - Yes
9OC2-241001	O	11	20 x 3 Ph.	230/400 WYE/230	L22-20P	24	C-13L/18 + C-19L/6	No	Power/X, Y, Z + Outlet	Yes - 2 Port	66.25 x 2 x 2 Dog House - No
9OD3-241001	O	16.6	30 x 3 Ph.	230/400 WYE/230	4P, 5W	24	C-13L/18 + C-19L/6	20/6	Power/X, Y, Z + Outlet	Yes - 2 Port	72 x 2.25 x 2.25 Dog House - Yes
9PL3-301001	P	17.3	60 x 3 Ph.	208 Delta/208	4P, 4W	30	C-13/24 + C-19/6	20/6D	Power/X, Y, Z	Yes - 2 Port	72 x 2.3 x 3.45 Dog House - No

Notes:

- (1) Standard cord length is 10 ft. For other lengths, change dd digit in part # (ex: 9PB2-30dd01 would be 9PB2-300801 = 8 ft). Available in 2, 4, 6, 8, 10, 15, 20 ft.
- (2) Standard cord exits from chassis face; top of chassis exit available on request.
- (3) C-13L, L refers to receptacles with locking feature.
- (4) Ex: 20/3D, D refers to double pole breakers (20A in this case).
- (5) Standard PDU chassis color is black, custom color overlay available on request.
- (6) These PDUs have no Surge Suppression or On/Off Switch.
- (7) PDU "Dog House" hosts the circuit breaker and protrude from the PDU chassis by 1.44".
- (8) All these 3-Phase PDUs are vertically mounted.



Single- and 3-Phase PDUs



Front View 9SG1-081002



Rear View 9SG1-081002



9SJ2-241001 9SJ2-241002

UL Listed Single- and 3-Phase PDUs

Type: S = Remotely Switched

Belden Part #	Type	De-Rated Power (kW)	Amps (A) x Phases	Input Volts (V)/ Output Volts (V)	Plug Type	Total Receptacle	Receptacle Type/ Qty(s)	Circuit Breaker (Amp/Qty) (4)	Monitoring-Local/ Remote	Mounting (5)	Dimensions L x W x D (in.)
9SG1-081001	S	1.9	20	120/120	5-20P	8	5-20R/8	No	Power/Agg Power	Rack - 19"	17 x 1.72 x 8.5 Dog House - No
9SG1-081002	S	1.9 or 3.3	20	120 or 208/120 or 208	C-20	8	C-13L/8	No	Power/Agg + Outlet	Rack - 19"	17 x 1.72 x 8.5 Dog House - No
9SB2-241001	S	5	30	208/208	L6-30P	24	C-13L/20 + C-19L/4	20/2D	Power/Agg, Circuit, Outlet	Vertical	70 x 2.5 x 2.25 Dog House - Yes
9SJ2-241001	S	8.6	30 x 3 Ph.	120/208 WYE/208	L21-30P	24	C-13L/18 + C-19L/6	20/3D	Power/Agg, Circuit	Vertical	70 x 2.5 x 2.25 Dog House - Yes
9SJ2-241002	S	8.6	30 x 3 Ph.	120/208 WYE/208	L21-30P	24	C-13L/18 + C-19L/6	20/3D	Power/Agg, Circuit, Outlet	Vertical	70 x 2.5 x 2.25 Dog House - Yes
9SC3-241001	S	11	20 x 3 Ph.	230/400 WYE/230	3P, 4W	24	C-13L/21 + C-19L/3	No	Power/Agg, Circuit	Vertical	66.25 x 2.5 x 2.25 Dog House - No
9SC3-241002	S	11	20 x 3 Ph.	230/400 WYE/230	3P, 4W	24	C-13L/21 + C-19L/3	No	Power/Agg, Circuit, Outlet	Vertical	66.25 x 2.5 x 2.25 Dog House - No
9SC2-241001	S	11	20 x 3 Ph.	230/400 WYE/230	L22-20P	24	C-13L/21 + C-19L/3	No	Power/Agg, Circuit	Vertical	66.25 x 2.5 x 2.25 Dog House - No
9SC2-241002	S	11	20 x 3 Ph.	230/400 WYE/230	L22-20P	24	C-13L/21 + C-19L/3	No	Power/Agg, Circuit, Outlet	Vertical	66.25 x 2.5 x 2.25 Dog House - No
9SD3-241001	S	16.6	30 x 3 Ph.	230/400 WYE/230	4P, 5W	24	C-13L/21 + C-19L/3	20/6	Power/Agg, Circuit	Vertical	72 x 2.5 x 2.25 Dog House - No
9SD3-241002	S	16.6	30 x 3 Ph.	230/400 WYE/230	4P, 5W	24	C-13L/21 + C-19L/3	20/6	Power/Agg, Circuit, Outlet	Vertical	72 x 2.5 x 2.25 Dog House - No
9SD2-241001	S	16.6	30 x 3 Ph.	230/400 WYE/230	L22-30P	24	C-13L/21 + C-19L/3	20/6	Power/Agg, Circuit	Vertical	72 x 2.5 x 2.25 Dog House - No
9SD2-241002	S	16.6	30 x 3 Ph.	230/400 WYE/230	L22-30P	24	C-13L/21 + C-19L/3	20/6	Power/Agg, Circuit, Outlet	Vertical	72 x 2.5 x 2.25 Dog House - No
9SL3-241001	S	17.2	60 x 3 Ph.	208 Delta/208	3P, 4W	24	C-13L/18 + C-19L/6	20/6D	Power/Agg, Circuit	Vertical	66.25 x 4 x 3.45 Dog House - No
9SL3-241002	S	17.2	60 x 3 Ph.	208 Delta/208	3P, 4W	24	C-13L/18 + C-19L/6	20/6D	Power/Agg, Circuit, Outlet	Vertical	66.25 x 4 x 3.45 Dog House - No

Notes:

(1) Standard cord length is 10 ft. For other lengths, change dd digit in part # (ex: 9PB2-30dd01 would be 9PB2-300801 = 8 ft). Available in 2, 4, 6, 8, 10, 15, 20 ft. 9SG1-081002 Power Cord is sold separately.

(2) Standard cord exits from chassis face; top of chassis exit available on request.

(3) C-13L, L refers to receptacles with locking feature.

(4) Ex: 20/3D, D refers to double pole breakers (20A in this case).

(5) Standard PDU chassis color is black, custom color overlay available on request.

(6) These PDUs have no On/Off Switch or Surge Suppression.

(7) PDU "Dog House" hosts the circuit breaker and protrude from the PDU chassis by 1.44".

(8) All these Single- and 3-Phase PDUs have a Switched Outlet and a 2-port Environmental Monitor.

Faster.
Easier.
Better.

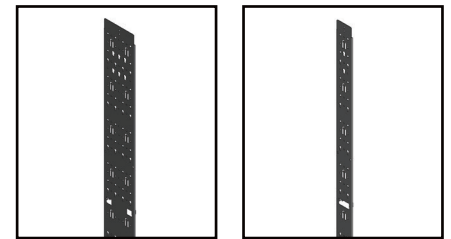


PDU Accessories — Mounting, Cord Management and Cord Set



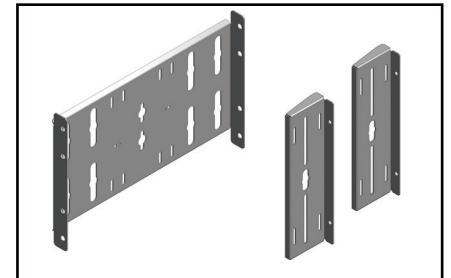
Description	Belden Part Number
Tool-Less PDU Mounting Panel (for XM and XS Style Enclosures)	
Lacing-PDU Mounting Panel, 3.5"W, 42RU, Black	XVMP014201
Lacing-PDU Mounting Panel, 3.5"W, 45RU, Black	XVMP014501
Lacing-PDU Mounting Panel, 3.5"W, 48RU, Black	XVMP014801
Lacing-PDU Mounting Panel, 7"W, 42RU, Black	XVMP024201
Lacing-PDU Mounting Panel, 7"W, 45RU, Black	XVMP024501
Lacing-PDU Mounting Panel, 7"W, 48RU, Black	XVMP024801
Lacing-PDU Mounting Panel, 3.5"W, 42RU, White	XVMP014202
Lacing-PDU Mounting Panel, 3.5"W, 45RU, White	XVMP014502
Lacing-PDU Mounting Panel, 3.5"W, 48RU, White	XVMP014802
Lacing-PDU Mounting Panel, 7"W, 42RU, White	XVMP024202
Lacing-PDU Mounting Panel, 7"W, 45RU, White	XVMP024502
Lacing-PDU Mounting Panel, 7"W, 48RU, White	XVMP024802
Tool-Less PDU Mounting Panel (for XN Style Enclosures)	
PDU Mounting Bracket Double, Post Mounting 2 PDU Side-by-Side Facing Into Enclosure	XNPM01
PDU Mounting Bracket Single, Rear Facing Pair	XNPM02
PDU Mounting Bracket Rear Facing Pair Between Frames	XNPM03
PDU Mounting Bracket Rear Facing Pair Between Frames with Extension	XNPM04
Vertical Manager Panel, 42RU X 7.0"W, Black	XNVLP42901
Vertical Manager Panel, 45RU X 7.0"W, Black	XNVLP45901
Vertical Manager Panel, 48RU X 7.0"W, Black	XNVLP48901
Vertical Manager Panel, 42RU X 7.0"W, CO White	XNVLP42902
Vertical Manager Panel, 45RU X 7.0"W, CO White	XNVLP45902
Vertical Manager Panel, 48RU X 7.0"W, CO White	XNVLP48902
Tool-Less PDU Mounting Panel (for XSS Seismic Enclosures)	
Cable PDU Manager Rear Panel, 44RU, Rear, Black	XSN44VRPM101
Cable PDU Manager Rear Panel, 44RU, Rear, with 6 Rings, Black	XSN44VRPM201
Cable PDU Manager Rear Panel, 44RU, Rear, CO White	XSN44VRPM102
Cable PDU Manager Rear Panel, 44RU, Rear, with 6 Rings, CO White	XSN44VRPM202
Tool-Less PDU Mounting Panel (for XSN Seismic Enclosures)	
Cable PDU Manager Rear Panel, 44RU, Rear, Black	XSN44VRPM101
Cable PDU Manager Rear Panel, 44RU, Rear, with 6 Rings, Black	XSN44VRPM201
Cable PDU Manager Rear Panel, 44RU, Rear, CO White	XSN44VRPM102
Cable PDU Manager Rear Panel, 44RU, Rear, with 6 Rings, CO White	XSN44VRPM202
Power Cord Management	
Cable Management Ring Plastic (Qty = 5) 3" x 1.5" Reversible	XMR01
Cable Management Ring Kit (Qty = 5) 2.5"W x 3"D	XMR03
Slack Management Spool Kit (includes 2 spools)	XSK020
Quick Mount Base (Qty=10) with Fastener, for 1/4" Holes	XCTM
Velcro Cable Ties, 25 per Roll, 8" L x 0.5"W	AX100783
Velcro Cable Ties, 25 per Roll, 12" L x 0.5"W	AX100784
Cord Set* (C13/C19, C19/C20 - UL - cUL Listed)	
C13 to C14 Non-Locking Cord Set - Y" Long — Black	CSC13C14yyBK
C13 to C14 Non-Locking - 36" Long — Black	CSC13C1436BK
C13 to C14 Non-Locking - 48" Long — Black	CSC13C1448BK
C19 to C20 Non-Locking Cord Set - Y" Long — Black	CSC19C20yyBK
C19 to C20 Non-Locking - 36" Long — Black	CSC19C2036BK
C19 to C20 Non-Locking - 48" Long — Black	CSC19C2048BK
C13 Locking to C14 - 20" Long — Blue	CSLC13C1420BL
C13 Locking to C14 - 20" Long — Orange	CSLC13C1420OR
C19 Locking to C20 - 20" Long — Blue	CSLC19C2020BL
C19 Locking to C20 - 20" Long — Orange	CSLC19C2020OR
C13 Locking to C14 - 39" Long — Blue	CSLC13C1439BL
C13 Locking to C14 - 39" Long — Orange	CSLC13C1439OR
C19 Locking to C20 - 39" Long — Blue	CSLC19C2039BL
C19 Locking to C20 - 39" Long — Orange	CSLC19C2039OR

Notes: yy = 12, 24, 36 ... 96 = cord length 12 to 96 inches; 12 inch increments.

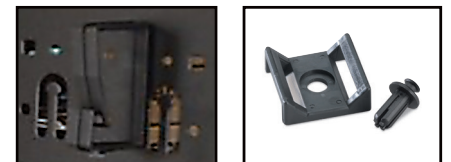


7" Lacing-PDU mounting panel

3.5" Lacing-PDU mounting panel

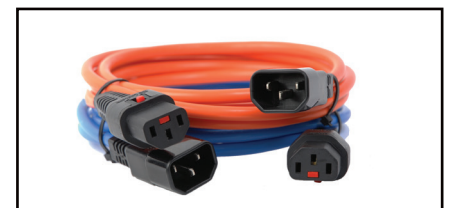


Mounting Brackets



Cable Management Ring (Plastic)

Quick Mount Base



Locking Cord Set*

*Built within the plug housing on the female end (C13/C19) of the cord, the patented integrated locking mechanism is protected against vibration and external elements that can easily dislodge other plug securing solutions, like external locking clips and standards. This self-contained locking mechanism engages with any standard IEC male connector (C14/C20). The cord locking feature is only available at the device-end of the cord sets. A power strip with locking receptacles must be available to secure these cords to the PDU.

Power Distribution Unit Configuration Guide

Please select the desired configuration and specifications and submit to Belden.

Power Availability _____ Phone _____ E-mail _____
 Quantity Required _____ Target Price _____ Project Timeline _____
 First Unit Required by Date _____ Comparable Competitive Unit Brand/Model# _____

Electrical Configuration

Power Input			
Quantity**	Plug Type	Input AMPS	Input VOLTS
	5-15P	15	125
	L5-15P	15	125
	5-20P	20	125
	L5-20P	20	125
	6-20P	20	250
	L6-20P	20	250
	L14-20P	20	125/250
	L21-20P	20 x 3~	120/208 WYE
	L5-30P	30	125
	L6-30P	30	250
	L14-30P	30	125/250
	L15-30P	30 x 3~	250 Delta
	L21-30P	30 x 3~	120/208 WYE
	IEC C-20 Inlet (No Cord)	20/16*	125 or 250
	IEC Pin & Sleeve 2 Pole/3 Wire	20/16*	250/230*
	IEC Pin & Sleeve 3 Pole/4 Wire	20	250 3~
	IEC Pin & Sleeve 2 Pole/3 Wire	30/32*	250/230*
	IEC Pin & Sleeve 3 Pole/4 Wire	30	250 3~
	IEC Pin & Sleeve 2 Pole/3 Wire	60/63*	250/230*
	IEC Pin & Sleeve 3 Pole/4 Wire	60	250 3~
Cord Length			

Power Input			
Quantity	Receptacle Type	AMPS	VOLTS
	5-15R Duplex	15	125
	5-15R Individual	15	125
	L5-15R Duplex	15	125
	5-20R Duplex	20	125
	5-20R Individual	20	125
	L5-20R	20	125
	6-20R Duplex	20	250
	L6-20R	20	250
	L5-30R	30	125
	L6-30R	30	250
	IEC C-13	15/10*	125 or 250
	IEC C-19	20/16*	125 or 250
	Other - Please Specify		

Physical Configuration			
Dimensional Limits		Mounting Orientation	
	Length		Horizontal
	Width		Vertical
	Height		

Hardware Options	
Quantity**	
	6" Wire Tails with Removable Plate
	Flexible Conduit
	Terminal Block

Power Switch	Surge Suppression
No	No
Yes	Yes
Yes - with Cover	

Monitoring	
Current Local	Current Remote
No	No
Yes - Current (Amps) Only	Yes - Circuit Level
Yes - Scrolling Display (Volts, Amps, Watts, Power Factor)	Yes - Outlet Level

Environmental	Remote Switching
No	No
Yes	Yes

Circuit Breakers	Isolated Ground
No (required by NEC in some units)	No
Yes	Yes

3rd Party Testing - Compliance	
UL® Listed	UR - UL® Recognized
FCC Part 15 Class A	CE®
None Required	Other - Please Specify

Additional Information

Notes:
 *Rating for CE Products
 **Quantity = # of Circuits

Faster.
Easier.
Better.



Plug and Receptacle Configuration Chart

NEMA Plugs and Receptacles

AMP	VOLTS	Straight-Blade Plug	Straight-Blade Receptacle	AMP	VOLTS	Straight-Blade Plug	Straight-Blade Receptacle				
15	125	5-15P		5-15R		20	250	6-20P		6-20R	
20	125	5-20P		5-20R							
AMP	VOLTS	Twist-Lock Plug	Twist-Lock Receptacle	AMP	VOLTS	Twist-Lock Plug	Twist-Lock Receptacle				
15	125	L5-15P		L5-15R		20	120/208 x 3- WYE	L21-20P		L21-20R	
20	125	L5-20P		L5-20R		20	230/400 x 3- WYE	L22-20P		L22-20R	
30	125	L5-30P		L5-30R		30	120/208 x 3- WYE	L21-30P		L21-30R	
20	250	L6-20P		L6-20R		30	230/400 x 3- WYE	L22-30P		L22-30R	
30	250	L6-30P		L6-30R		30	250 x 3- Delta	L15-30P		L15-30R	
20	125/250	L14-20P		L14-20R		AMP	VOLTS	California Style			
30	125/250	L14-30P		L14-30R		50	250 x 3- Delta	3P, 4W		3P, 4W	

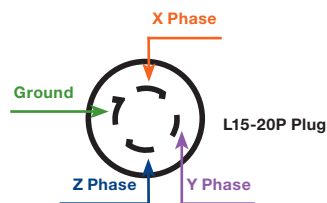
IEC Plugs and Receptacles

AMP	VOLTS	Power Inlet	Power Receptacle	AMP	VOLTS	Power Inlet	Power Receptacle				
15/10*	125 or 250	C-14		C-13		20/16*	125 or 250	C-20		C-19	
AMP	VOLTS	Pin & Sleeve				AMP	VOLTS	Pin & Sleeve			
20/16*	250/230*	2P, 3W		2P, 3W		60/63*	250/230*	2P, 3W		2P, 3W	
20	250	3P, 4W		3P, 4W		60	250	3P, 4W		3P, 4W	
30/32*	250/230	2P, 3W		2P, 3W		20/16*	230/400* x 3- WYE	4P, 5W		4P, 5W	
30	250	3P, 4W		3P, 4W		30/32*	230/400* x 3- WYE	4P, 5W		4P, 5W	

*Rating for CE Products

What is 3-Phase Delta?

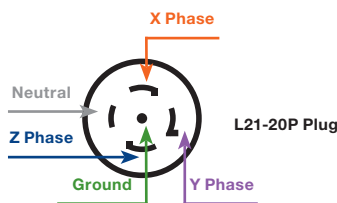
3-Phase Delta from 208V Source



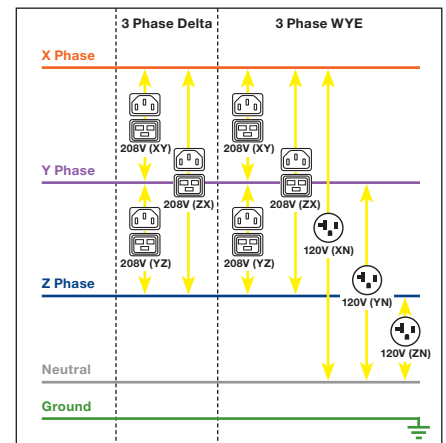
A 3-Phase Delta is a 4-wire configuration consisting of 3-Phase conductors (X, Y and Z) and a Ground. Without the neutral present, only phase-to-phase wiring is possible. The potential between any 2-Phase conductors is typically 208V.

What is 3-Phase WYE?

3-Phase Delta from 120/208V Source



A 3-Phase Delta 120/208V WYE is a 5-wire configuration consisting of 3-Phase conductors (X, Y and Z), Neutral and Ground. The potential between any 2-Phase conductors is 208V. The potential between any phase and neutral is 120V. This configuration can be wired to provide 120V, 208V or a combination of both voltages within one PDU.



Power Distribution & Climate Monitoring