



Chipsmall Limited consists of a professional team with an average of over 10 year of expertise in the distribution of electronic components. Based in Hongkong, we have already established firm and mutual-benefit business relationships with customers from,Europe,America and south Asia,supplying obsolete and hard-to-find components to meet their specific needs.

With the principle of “Quality Parts,Customers Priority,Honest Operation,and Considerate Service”,our business mainly focus on the distribution of electronic components. Line cards we deal with include Microchip,ALPS,ROHM,Xilinx,Pulse,ON,Everlight and Freescale. Main products comprise IC,Modules,Potentiometer,IC Socket,Relay,Connector.Our parts cover such applications as commercial,industrial, and automotives areas.

We are looking forward to setting up business relationship with you and hope to provide you with the best service and solution. Let us make a better world for our industry!



Contact us

Tel: +86-755-8981 8866 Fax: +86-755-8427 6832

Email & Skype: info@chipsmall.com Web: www.chipsmall.com

Address: A1208, Overseas Decoration Building, #122 Zhenhua RD., Futian, Shenzhen, China



1.0 INTRODUCTION

This user's manual is for the XR21V1412 evaluation board rev 2.0 and describes the hardware setup required to operate the part.

2.0 OVERVIEW

The XR21V1412 evaluation board has one 32-QFN package on it. **Figure 1** shows a top view of XR21V1412 evaluation board layout.

FIGURE 1. TOP VIEW OF XR21V1412 EVALUATION BOARD LAYOUT

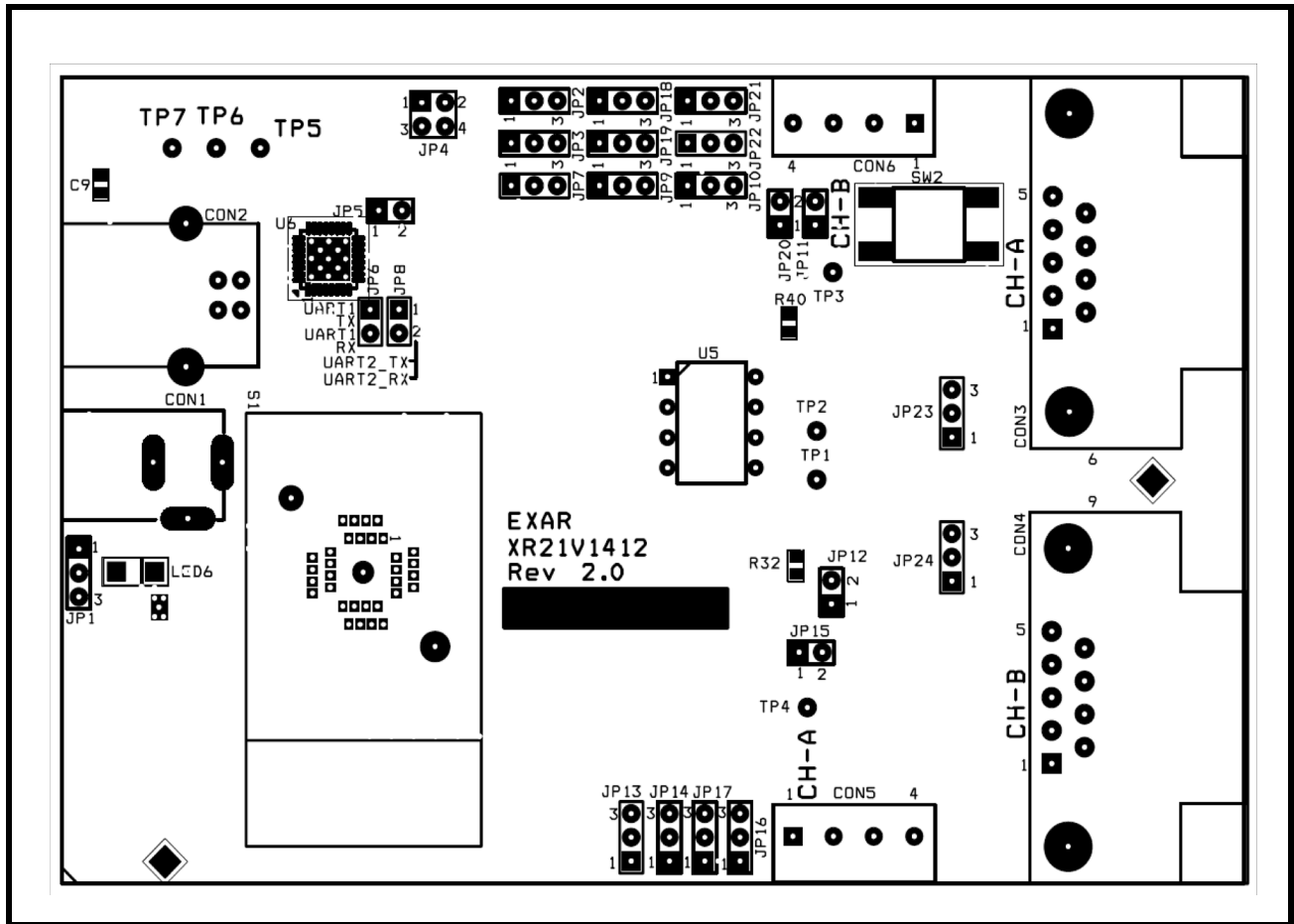
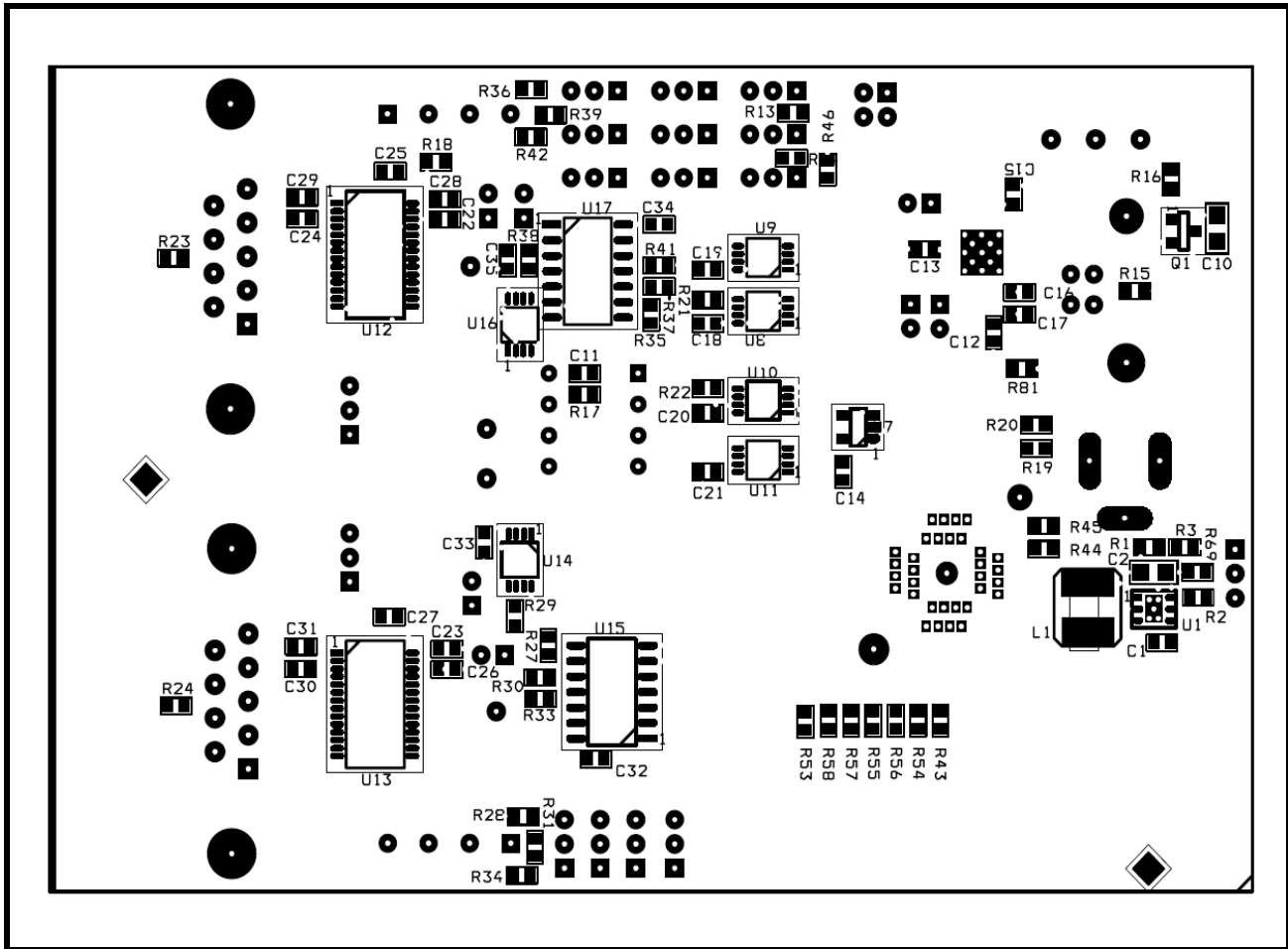


Figure 2 shows a bottom view of XR21V1412 evaluation board layout.

FIGURE 2. BOTTOM VIEW OF XR21V1412 EVALUATION BOARD LAYOUT





2.1 Evaluation Board Components

Table 1 below lists some of the components installed on the evaluation boards. The default setting is RS-232 mode.

TABLE 1: COMPONENTS OF THE XR21V1412 EVALUATION BOARD

UNIT	LOCATION	PART	FUNCTION
U1	Bottom	XRP6657-DFN6	Exar's voltage converter to step down voltage from 5V to 3.3V.
U5	Top	AT24C02B-PU-DIP8	I2C EEPROM.
U6	Top	XR21V1412IL32	Exar's 2 channel USB UART.
U7	Bottom	NC7SZ14M5X-SOT-23-5	Invert LowPower (suspend) signal.
U8	Bottom	SN74LVC2G53DCTR-SM8	Switch UART TXA signal into either RS-232 or RS-485 transceiver.
U9	Bottom	SN74LVC2G53DCTR-SM8	Switch RXA signal from either RS-232 or RS-485 transceiver.
U10	Bottom	SN74LVC2G53DCTR-SM8	Switch UART TXB signal into either RS-232 or RS-485 transceiver.
U11	Bottom	SN74LVC2G53DCTR-SM8	Switch RXB signal from either RS-232 or RS-485 transceiver.
U12	Bottom	SP3245EEY-L-TSSOP-28	Exar's RS-232 transceiver for channel A.
U13	Bottom	SP3245EEY-L-TSSOP-28	Exar's RS-232 transceiver for channel B.
U14	Bottom	SN74LVC2G66DCT-SM8	Multiplexer to select RS-485 direction control signal (RTSA# or DTRA#).
U15	Bottom	SP3497EEN-L-NSOIC14	Exar's RS-485 transceiver for channel A.
U16	Bottom	SN74LVC2G66DCT-SM8	Multiplexer to select RS-485 direction control signal (RTSB# or DTRB#).
U17	Bottom	SP3497EEN-L-NSOIC14	Exar's RS-485 transceiver for channel B.
CON1	Top	PJ-002A	Not installed. External power input.
CON2	Top	690-004-621-023	USB B-Type connector. Communication with USB host (USBD+, USBD-) and power source for evaluation board (V _{Bus}).
CON3	Top	182-009-113R161	RS-232 mode DB9 male connector for channel A.
CON4	Top	182-009-113R161	RS-232 mode DB9 male connector for channel B.
CON5	Top	ED555/4DS	RS-485 mode 4X1 terminal block for channel A.
CON6	Top	ED555/4DS	RS-485 mode 4X1 terminal block for channel B.
S1	Top	XR21V1412 QFN-32 Socket	Not installed. For internal test only.

XR21V1412 EVALUATION BOARD USER'S MANUAL

2.2 Jumper Settings

2.2.1 Common jumpers

Common jumpers are those jumpers which should be set the same for both RS-232 and RS-485 mode. The **Table 2** shows the common jumpers setting on the evaluation board:

TABLE 2: COMMON JUMPERS SETTINGS

JUMPERS	LOCATION	FUNCTIONS	COMMENTS
JP1	Top	Power source select	Not installed. Trace between pin 2&3. <ul style="list-style-type: none"> ■ Jumper in 1&2 selects power from external power supply of 5V ■ Jumper in 2&3 selects power from USB V_{BUS} power
JP2	Top	SCL pull-up/pull-down resistor select	Jumper in 1&2 selects pull-up for SCL Jumper in 2&3 selects pull-down for SCL
JP3	Top	SDA pull-up/pull-down resistor select	Jumper in 1&2 selects pull-up for SDA Jumper in 2&3 selects pull-down for SDA
JP4	Top	I2C EEPROM header	Jumper in 1&2 connects SCL to I2C EEPROM Jumper in 3&4 connects SDA to I2C EEPROM NOTE: I2C EEPROM has not been programmed
JP5	Top	Power supply for XR21V1412	Not installed. Trace between pin 1&2
JP6	Top	UART side Channel A external loop-back header	Jumper in enables external loopback for channel A in the UART side NOTE: External loopback via this jumper can only be performed when the transceiver has been disabled.
JP8	Top	UART side Channel B external loop-back header	Jumper in enables external loopback for channel B in the UART side NOTE: External loopback via this jumper can only be performed when the transceiver has been disabled.
JP9	Top	Selects RS-232 or RS-485 mode for Channel A	Jumper in 1&2 selects RS-485 mode Jumper in 2&3 selects RS-232 mode (default)
JP10	Top	Selects RS-232 or RS-485 mode for Channel B	Jumper in 1&2 selects RS-485 mode Jumper in 2&3 selects RS-232 mode (default)

2.2.2 Remote wakeup and jumper

The SDA and SCL are used to specify whether Remote Wakeup and/or Bus Powered configurations are to be supported. These pins are sampled at power-up. The following **Table 3** describes how Remote Wakeup and Bus Powered support.

TABLE 3: REMOTE WAKEUP AND POWER MODES

SDA	SCL	REMOTE WAKE-UP SUPPORT	POWER MODE	COMMENTS
1	1	No	Self-Powered	Default, if no EEPROM is present
1	0	No	Bus-Powered	
0	1	Yes	Self-Powered	
0	0	Yes	Bus-Powered	

The following **Table 4** shows jumpers related to remote wakeup.

TABLE 4: REMOTE WAKEUP JUMPERS SETTINGS

JUMPERS	LOCATION	FUNCTIONS	COMMENTS
JP7	Top	Select remote control wakeup signal for Channel A	Jumper in 1&2 selects UART RS-232 transceiver (RI#) signal Jumper in 2&3 selects push-button (default)
SW2	Top	Generate remote wakeup signal	Push once to generate one remote wakeup signal

XR21V1412 EVALUATION BOARD USER'S MANUAL
2.2.3 RS-232 mode jumpers (Default setting is RS-232 mode)

The XR21V1412 evaluation board is set in RS-232 mode by default. The following **Table 5** jumper settings apply to the RS-232 mode:

TABLE 5: JUMPER SETTINGS FOR RS-232 MODE

JUMPERS	LOCATION	FUNCTIONS	COMMENTS
JP11	Top	Power supply for RS-232 transceiver of Channel A	Not installed. Trace between pin 1&2
JP12	Top	Power supply for RS-232 transceiver of Channel B	Not installed. Trace between pin 1&2

2.2.4 RS-485 mode jumpers

The following **Table 6** jumper setting applies to the RS-485 mode:

TABLE 6: JUMPER SETTINGS FOR RS-485 MODE

JUMPERS	LOCATION	FUNCTIONS	COMMENTS
JP15	Top	Power supply for RS-485 transceiver of Channel A	Not installed. Trace between pin 1&2
JP13	Top	Select Channel A RTS or DTR direction control for TX	<ul style="list-style-type: none"> ■ Jumper in 1&2 selects RTS based direction control for TX ■ Jumper in 2&3 selects DTR based direction control for TX
JP14	Top	Select Channel A direction control for RX and TX or always for RX	<ul style="list-style-type: none"> ■ Jumper in 1&2 selects common direction control for RX and TX (half-duplex) ■ Jumper in 2&3 enables RX always (full-duplex)
JP16	Top	Channel A select for half duplex or full duplex mode	<ul style="list-style-type: none"> ■ Jumper in 1&2 selects for half duplex mode (CON5 pins 1-2) ■ Jumper in 2&3 selects for full duplex mode (CON5 pins 1-4)
JP17	Top	Channel A select for half duplex or full duplex mode	<ul style="list-style-type: none"> ■ Jumper in 1&2 selects for half duplex mode (CON5 pins 1-2) ■ Jumper in 2&3 selects for full duplex mode (CON5 pins 1-4)
JP20	Top	Power supply for RS-485 transceiver of Channel B	Not installed. Trace between pin 1&2
JP18	Top	Select Channel B RTS or DTR direction control for TX	<ul style="list-style-type: none"> ■ Jumper in 1&2 selects RTS based direction control for TX ■ Jumper in 2&3 selects DTR based direction control for TX
JP19	Top	Select Channel B direction control for RX and TX or always for RX	<ul style="list-style-type: none"> ■ Jumper in 1&2 selects common direction control for RX and TX (half-duplex) ■ Jumper in 2&3 enables RX always (full-duplex)



TABLE 6: JUMPER SETTINGS FOR RS-485 MODE

JUMPERS	LOCATION	FUNCTIONS	COMMENTS
JP21	Top	Channel B select for half duplex or full duplex mode	<ul style="list-style-type: none">■ Jumper in 1&2 selects for half duplex mode (CON6 pins 1-2)■ Jumper in 2&3 selects for full duplex mode (CON6 pins 1-4)
JP22	Top	Channel B select for half duplex or full duplex mode	<ul style="list-style-type: none">■ Jumper in 1&2 selects for half duplex mode (CON6 pins 1-2)■ Jumper in 2&3 selects for full duplex mode (CON6 pins 1-4)

3.0 DRIVERS AND SUPPORT

For any questions about this evaluation board, software drivers or technical support, send an e-mail to uarttechsupport@exar.com.

NOTICE

EXAR Corporation reserves the right to make changes to the products contained in this publication in order to improve design, performance or reliability. EXAR Corporation assumes no responsibility for the use of any circuits described herein, conveys no license under any patent or other right, and makes no representation that the circuits are free of patent infringement. Charts and schedules contained here in are only for illustration purposes and may vary depending upon a user's specific application. While the information in this publication has been carefully checked; no responsibility, however, is assumed for inaccuracies.

EXAR Corporation does not recommend the use of any of its products in life support applications where the failure or malfunction of the product can reasonably be expected to cause failure of the life support system or to significantly affect its safety or effectiveness. Products are not authorized for use in such applications unless EXAR Corporation receives, in writing, assurances to its satisfaction that: (a) the risk of injury or damage has been minimized; (b) the user assumes all such risks; (c) potential liability of EXAR Corporation is adequately protected under the circumstances.

Copyright 2009 EXAR Corporation

Datasheet October 2009.

Send your UART technical inquiry with technical details to hotline: uarttechsupport@exar.com.

Reproduction, in part or whole, without the prior written consent of EXAR Corporation is prohibited.