



Chipsmall Limited consists of a professional team with an average of over 10 year of expertise in the distribution of electronic components. Based in Hongkong, we have already established firm and mutual-benefit business relationships with customers from,Europe,America and south Asia,supplying obsolete and hard-to-find components to meet their specific needs.

With the principle of “Quality Parts,Customers Priority,Honest Operation,and Considerate Service”,our business mainly focus on the distribution of electronic components. Line cards we deal with include Microchip,ALPS,ROHM,Xilinx,Pulse,ON,Everlight and Freescale. Main products comprise IC,Modules,Potentiometer,IC Socket,Relay,Connector.Our parts cover such applications as commercial,industrial, and automotives areas.

We are looking forward to setting up business relationship with you and hope to provide you with the best service and solution. Let us make a better world for our industry!



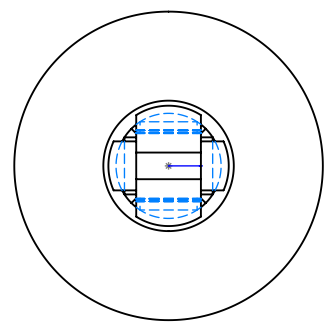
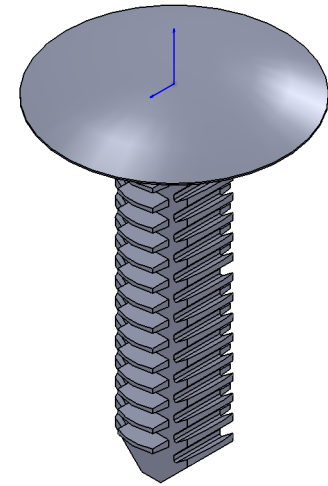
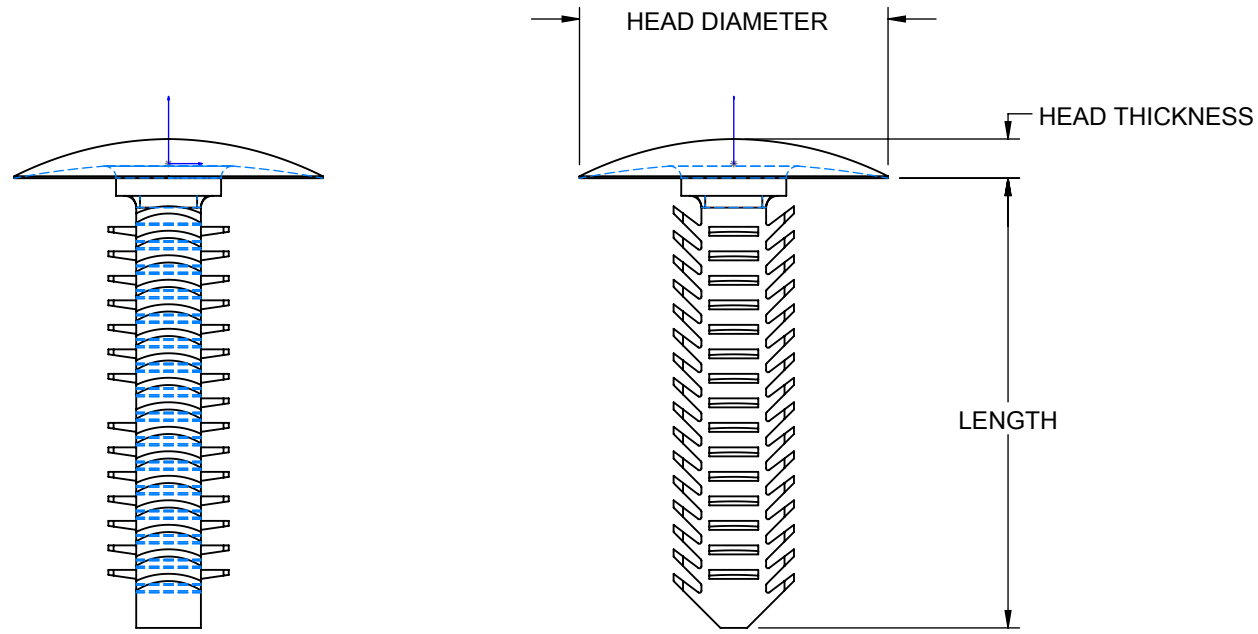
Contact us

Tel: +86-755-8981 8866 Fax: +86-755-8427 6832

Email & Skype: info@chipsmall.com Web: www.chipsmall.com

Address: A1208, Overseas Decoration Building, #122 Zhenhua RD., Futian, Shenzhen, China






Part No	Hole Dia	Panel Thickness	Head Dia.	Head Thickness	Length
XT1250125A	.125 (3.2)	.062-.125 (1.6-3.2)	.344 (8.7)	.062 (1.6)	.208 (5.3)
XT1250250A	.125 (3.2)	.062-.250 (1.6-6.4)	.344 (8.7)	.062 (1.6)	.321 (8.2)
XT1250375A	.125 (3.2)	.062-.375 (1.6-9.5)	.344 (8.7)	.062 (1.6)	.458 (11.6)
XT1880250A	.188 (4.8)	.062-.250 (1.6-6.4)	.500 (12.7)	.078 (2.0)	.348 (8.8)
XT1880375A	.188 (4.8)	.062-.375 (1.6-9.5)	.500 (12.7)	.078 (2.0)	0.473(12.0)
XT1880500A	.188 (4.8)	.062-.500 (1.6-12.7)	.500 (12.7)	.078 (2.0)	.598 (15.2)
XT1880625A	.188 (4.8)	.062-.625 (1.6-15.9)	.500 (12.7)	.078 (2.0)	.723 (18.4)
XT1880750A	.188 (4.8)	.062-.750 (1.6-19.1)	.500 (12.7)	.078 (2.0)	.848 (21.5)
XT2500250A	.250 (6.4)	.062-.250 (1.6-6.4)	.700 (17.8)	.1 (2.5)	.391 (9.9)
XT2500375A	.250 (6.4)	.062-.375 (1.6-9.5)	.700 (17.8)	.1 (2.5)	.506 (12.9)
XT2500500A	.250 (6.4)	.062-.500 (1.6-12.7)	.700 (17.8)	.1 (2.5)	.630 (16)
XT2500625A	.250 (6.4)	.062-.625 (1.6-15.9)	.700 (17.8)	.1 (2.5)	.755 (19.2)
XT2500750A	.250 (6.4)	.062-.750 (1.6-19.1)	.700 (17.8)	.1 (2.5)	.880 (22.4)
XT2500875A	.250 (6.4)	.062-.875 (1.6-22.2)	.700 (17.8)	.1 (2.5)	1.00 (25.5)
XT2501000A	.250 (6.4)	.062-1.00 (1.6-25.4)	.700 (17.8)	.1 (2.5)	1.12 (28.5)
XT2501250A	.250 (6.4)	.062-1.25 (1.6-31.8)	.700 (17.8)	.1 (2.5)	1.38 (35.1)
XT2501500A	.250 (6.4)	.062-1.25 (1.6-38.1)	.700 (17.8)	.1 (2.5)	1.63 (41.5)
XT2501750A	.250 (6.4)	.062-1.75 (1.6-44.5)	.700 (17.8)	.1 (2.5)	1.88 (47.8)
XT2502000A	.250 (6.4)	.062-2.00 (1.6-50.8)	.700 (17.8)	.1 (2.5)	2.13 (54.2)
XT2810250A	.281 (7.1)	.062-.250 (1.6-6.4)	.787 (20.0)	.1 (2.5)	.384 (9.8)
XT2810375A	.281 (7.1)	.062-.375 (1.6-9.5)	.787 (20.0)	.1 (2.5)	.515 (13.1)
XT2810500A	.281 (7.1)	.062-.500 (1.6-12.7)	.787 (20.0)	.1 (2.5)	.642 (16.3)
XT2810625A	.281 (7.1)	.062-.625 (1.6-15.9)	.787 (20.0)	.1 (2.5)	.767 (19.5)
XT2810750A	.281 (7.1)	.062-.750 (1.6-19.1)	.787 (20.0)	.1 (2.5)	.894 (22.7)
XT2810875A	.281 (7.1)	.062-.875 (1.6-22.2)	.787 (20.0)	.1 (2.5)	1.02 (25.9)
XT2811000A	.281 (7.1)	.062-1.00 (1.6-25.4)	.787 (20.0)	.1 (2.5)	1.15 (29.1)
XT2811250A	.281 (7.1)	.062-1.25 (1.6-31.8)	.787 (20.0)	.1 (2.5)	1.40 (35.6)
XT2811500A	.281 (7.1)	.062-1.25 (1.6-38.1)	.787 (20.0)	.1 (2.5)	1.65 (41.9)
XT2811750A	.281 (7.1)	.062-1.75 (1.6-44.5)	.787 (20.0)	.1 (2.5)	1.90 (48.3)
XT2812000A	.281 (7.1)	.062-2.00 (1.6-50.8)	.787 (20.0)	.1 (2.5)	2.15 (54.6)
XT3120250A	.312 (7.9)	.062-.250 (1.6-6.4)	.874 (22.2)	.1 (2.5)	.410 (10.4)
XT3120375A	.312 (7.9)	.062-.375 (1.6-9.5)	.874 (22.2)	.1 (2.5)	.529 (13.4)
XT3120500A	.312 (7.9)	.062-.500 (1.6-12.7)	.874 (22.2)	.1 (2.5)	.642 (16.3)
XT3120625A	.312 (7.9)	.062-.625 (1.6-15.9)	.874 (22.2)	.1 (2.5)	.783 (19.9)
XT3120750A	.312 (7.9)	.062-.750 (1.6-19.1)	.874 (22.2)	.1 (2.5)	.894 (22.7)
XT3120875A	.312 (7.9)	.062-.875 (1.6-22.2)	.874 (22.2)	.1 (2.5)	1.04 (26.3)
XT3121000A	.312 (7.9)	.062-1.00 (1.6-25.4)	.874 (22.2)	.1 (2.5)	1.16 (29.5)
XT3121250A	.312 (7.9)	.062-1.25 (1.6-31.8)	.874 (22.2)	.1 (2.5)	1.42 (36)
XT3121500A	.312 (7.9)	.062-1.25 (1.6-38.1)	.874 (22.2)	.1 (2.5)	1.67 (42.4)
XT3121750A	.312 (7.9)	.062-1.75 (1.6-44.5)	.874 (22.2)	.1 (2.5)	1.93 (49.0)
XT3122000A	.312 (7.9)	.062-2.00 (1.6-50.8)	.874 (22.2)	.1 (2.5)	2.18 (55.5)
XT3750250A	.375 (9.5)	.062-.250 (1.6-6.4)	1.00 (22.4)	.1 (2.5)	.445 (11.3)
XT3750375A	.375 (9.5)	.062-.375 (1.6-9.5)	1.00 (22.4)	.1 (2.5)	.570 (14.5)
XT3750500A	.375 (9.5)	.062-.500 (1.6-12.7)	1.00 (22.4)	.1 (2.5)	.689 (17.5)
XT3750625A	.375 (9.5)	.062-.625 (1.6-15.9)	1.00 (22.4)	.1 (2.5)	.816 (20.7)
XT3750750A	.375 (9.5)	.062-.750 (1.6-19.1)	1.00 (22.4)	.1 (2.5)	.943 (24)
XT3750875A	.375 (9.5)	.062-.875 (1.6-22.2)	1.00 (22.4)	.1 (2.5)	1.07 (27.2)
XT3751000	.375 (9.5)	.062-1.00 (1.6-25.4)	1.00 (22.4)	.1 (2.5)	1.196 (30.4)
XT3751250A	.375 (9.5)	.062-1.25 (1.6-31.8)	1.00 (22.4)	.1 (2.5)	1.45 (36)
XT3751500A	.375 (9.5)	.062-1.25 (1.6-38.1)	1.00 (22.4)	.1 (2.5)	1.71 (43.3)
XT3751750A	.375 (9.5)	.062-1.75 (1.6-44.5)	1.00 (22.4)	.1 (2.5)	1.96 (49.8)
XT3752000A	.375 (9.5)	.062-2.00 (1.6-50.8)	1.00 (22.4)	.1 (2.5)	2.21 (56.2)

NOTES:
 1. MATERIAL: NYLON 6/6 ZR207
 2. COLOR: BLACK

A	RELEASED FOR PRODUCTION	MJB 10/16/2014
REV.	DESCRIPTION	ENGR. DATE

TITLE: XT SERIES XMAS TREE CLIP FASTENER				UNITS: IN [MM]	
CREATED USING SOLIDWORKS	FILE #: XT SERIES	DWN: M.J.B.	APP: -	FINAL	
TOLERANCES UNLESS NOTED .XX=±.010 .XXX=±.005 FRAC.=±1/64 ANG.=±1°	SHEET: 1 OF 1	SHEET SIZE: B	DT: 11/21/13	CHKD: -	PART #
RE:		 ESSENTRA COMPONENTS		SEE TABLE	PRINT TYPE CA