



Chipsmall Limited consists of a professional team with an average of over 10 year of expertise in the distribution of electronic components. Based in Hongkong, we have already established firm and mutual-benefit business relationships with customers from,Europe,America and south Asia,supplying obsolete and hard-to-find components to meet their specific needs.

With the principle of “Quality Parts,Customers Priority,Honest Operation,and Considerate Service”,our business mainly focus on the distribution of electronic components. Line cards we deal with include Microchip,ALPS,ROHM,Xilinx,Pulse,ON,Everlight and Freescale. Main products comprise IC,Modules,Potentiometer,IC Socket,Relay,Connector.Our parts cover such applications as commercial,industrial, and automotives areas.

We are looking forward to setting up business relationship with you and hope to provide you with the best service and solution. Let us make a better world for our industry!



## Contact us

Tel: +86-755-8981 8866 Fax: +86-755-8427 6832

Email & Skype: info@chipsmall.com Web: www.chipsmall.com

Address: A1208, Overseas Decoration Building, #122 Zhenhua RD., Futian, Shenzhen, China





USB TO XBEE®  
WIRELESS PAN ADAPTER  
FOR LAPTOPS & PCS



# XSTICK®

The XStick provides local connectivity to a wireless XBee network from a laptop or PC, enabling local commissioning of the network and its devices

Digi's XStick is an easy-to-use USB to XBee Wireless Personal Area Network (WPAN) adapter, providing local connectivity to wireless networks. Simply plug the XStick into the USB port of a laptop or PC for instant access to an XBee network and its connected devices. This compact, USB-powered wireless adapter enables local network configuration, diagnostics or device monitoring.

Two versions are available. The XStick 802.15.4 version is compatible with XBee and XBee-PRO® 802.15.4 devices and uses a fast multipoint network. The XStick ZB version is

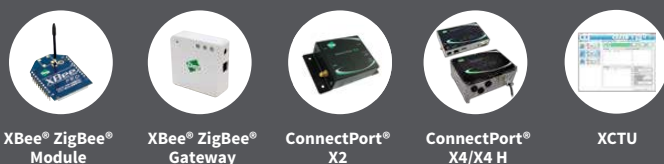
compatible with XBee or XBee-PRO ZB devices and utilizes the ZigBee PRO Feature Set for robust mesh networks.

XStick is part of Digi's XBee family of solutions, offering users seamless wireless communication between devices, including adapters, routers and gateways.

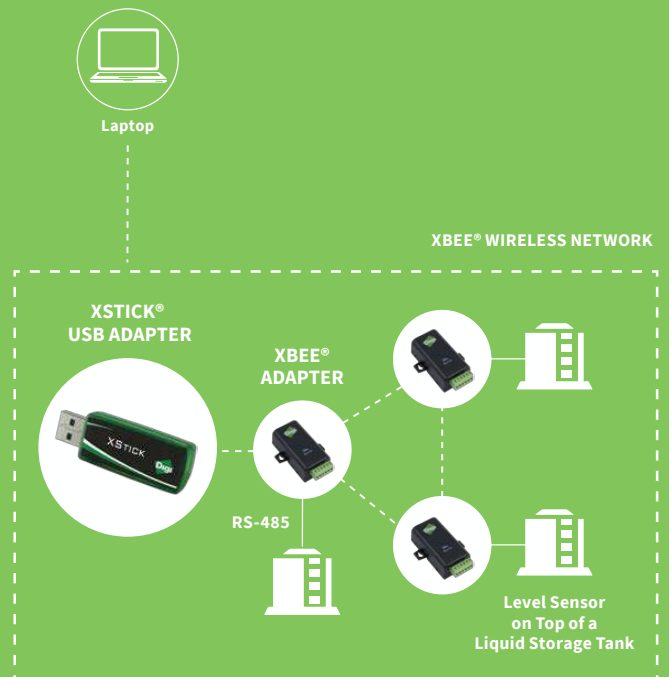
## BENEFITS

- USB to XBee Wireless Personal Area Network adapter (WPAN)
- Provides local connectivity for access, configuration and network commissioning
- Available in self-healing, self-configuring ZigBee mesh or fast 802.15.4 multipoint versions
- USB powered
- LEDs for power status and network association

## RELATED PRODUCTS



## APPLICATION EXAMPLE



## SPECIFICATIONS

# XStick® ZB

# XStick® 802.15.4

### PERFORMANCE

INDOOR/URBAN RANGE	66 ft (20 m)	49 ft (15 m)
OUTDOOR/RF LINE-OF-SIGHT RANGE	164 ft (50 m)	131 ft (40 m)
TRANSMIT POWER OUTPUT (NOMINAL 25° C)	2.8 mW (4.5 dBm)	1 mW (0 dBm)
RF DATA RATE	250 Kbps	
SERIAL INTERFACE DATA RATE (SOFTWARE SELECTABLE)	1200 bps - 115.2 Kbps	
RECEIVER SENSITIVITY	-90 dBm	

### POWER REQUIREMENTS

SUPPLY VOLTAGE	5V from USB port of PC	
TRANSMIT CURRENT	51 mA	64 mA
RECEIVE CURRENT	47 mA	64 mA
POWER-DOWN CURRENT	XStick should not be put into sleep mode	

### GENERAL

FREQUENCY BAND	2.4 GHz ISM	
DIMENSIONS (L X W X H)	2.29 in x 0.80 in x 0.43 in (5.83 cm x 2.03 cm x 1.08 cm)	
OPERATING TEMPERATURE	-40° C to +85° C	
CONNECTOR	USB Type A	
ANTENNA OPTIONS	Internal only	

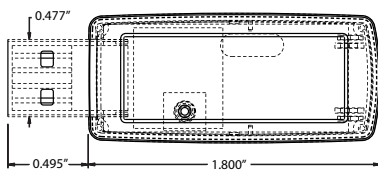
### NETWORKING & SECURITY

SUPPORTED NETWORK TOPOLOGIES	ZigBee Mesh	Point-to-Point, Point-to-Multipoint, Peer-to-Peer
NUMBER OF CHANNELS (SOFTWARE SELECTABLE)	16	
ADDRESSING OPTIONS	PAN, Channel, Address	

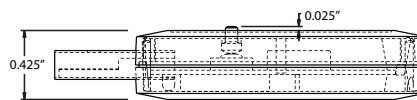
### REGULATORY APPROVALS

FCC PART 15.247 (USA)	MCQ-XSTICK2	MCQ-XSTICK1
IC (CANADA)	1846A-XSTICK2	1846A-XSTICK1
ETSI (EUROPE)	Yes	Yes
TELEC (JAPAN)	Yes	No

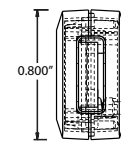
XStick - Top View



XStick - Side View



XStick - Connector



## PART NUMBERS

## DESCRIPTION

XU-Z11	XStick USB Adapter, ZB
XU-A11	XStick 802.15.4
XU-Z11J	XStick ZB for Japan (International)

DIGI SERVICE AND SUPPORT / You can purchase with confidence knowing that Digi is always available to serve you with expert technical support and our industry leading warranty. For detailed information visit [www.digi.com/support](http://www.digi.com/support).

© 1996-2015 Digi International Inc. All rights reserved.  
All trademarks are the property of their respective owners.

91001463  
C1/915

DIGI INTERNATIONAL WORLDWIDE HQ  
877-912-3444 / 952-912-3444 / [www.digi.com](http://www.digi.com)

DIGI INTERNATIONAL FRANCE  
+33-1-55-61-98-98 / [www.digi.fr](http://www.digi.fr)

DIGI INTERNATIONAL JAPAN  
+81-3-5428-0261 / [www.digi-intl.co.jp](http://www.digi-intl.co.jp)

DIGI INTERNATIONAL SINGAPORE  
+65-6213-5380

DIGI INTERNATIONAL CHINA  
+86-21-50492199 / [www.digi.com.cn](http://www.digi.com.cn)

