



Chipsmall Limited consists of a professional team with an average of over 10 year of expertise in the distribution of electronic components. Based in Hongkong, we have already established firm and mutual-benefit business relationships with customers from,Europe,America and south Asia,supplying obsolete and hard-to-find components to meet their specific needs.

With the principle of “Quality Parts,Customers Priority,Honest Operation,and Considerate Service”,our business mainly focus on the distribution of electronic components. Line cards we deal with include Microchip,ALPS,ROHM,Xilinx,Pulse,ON,Everlight and Freescale. Main products comprise IC,Modules,Potentiometer,IC Socket,Relay,Connector.Our parts cover such applications as commercial,industrial, and automotives areas.

We are looking forward to setting up business relationship with you and hope to provide you with the best service and solution. Let us make a better world for our industry!



Contact us

Tel: +86-755-8981 8866 Fax: +86-755-8427 6832

Email & Skype: info@chipsmall.com Web: www.chipsmall.com

Address: A1208, Overseas Decoration Building, #122 Zhenhua RD., Futian, Shenzhen, China



Faster.
Easier.
Better.



XM and XS Series – Accessories



Vertical Lacing/PDU Mounting Panel

XVMP			
Panel Width	Frame Height	Color	
01 3.5"	42 42RU	01 Black	
02 7"	45 45RU	02 CO White	
	48 48RU		

Vertical Manager – Box Style With door.

XVM	01		
Frame Height	Color		
42 42RU	01 Black		
45 45RU	02 CO White		
48 48RU			

Vertical Manager – Finger Style With door.

XVM	02		
Frame Height	Color		
42 42RU	01 Black		
45 45RU	02 CO White		
48 48RU			

Description	Belden Part Number
-------------	--------------------

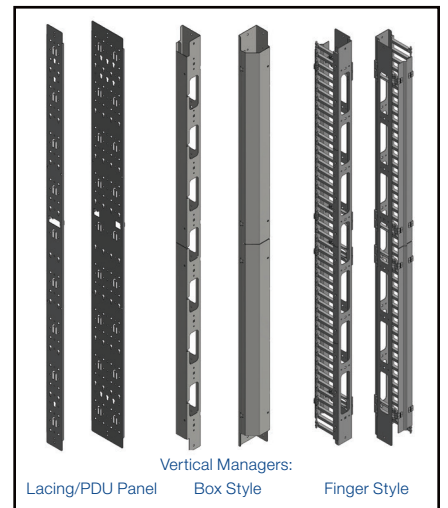
Other Accessories

Ring Kits

Cable Management Ring Plastic (Qty = 5) 3" x 1.5" Reversible	XMR01
Cable Management Ring Kit (Qty = 5) 6.5" Wide x 3" Deep	XMR02
Cable Management Ring Kit (Qty = 5) 2.5" Wide x 3" Deep	XMR03
Fiber Slack Management Spools 6" deep (includes 2 spools)	BHSP020
Fiber Slack Management Spools 2" deep for lacing panels (includes 2 spools)	BHSP030
Quick Mount Base (Qty=10) includes Fastener, for 1/4" Holes	XTCM01
Velcro Cable Ties, 25 per Roll, 8"L	AX100783
Velcro Cable Ties, 25 per Roll, 12"L	AX100784

Vertical Ground Bars

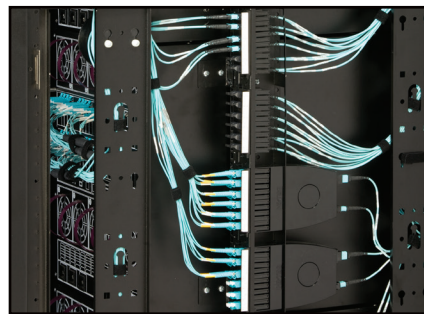
Vertical Ground Bar, Insulated, 42RU	XVGB0142
Vertical Ground Bar, Insulated, 45RU	XVGB0145
Vertical Ground Bar, Insulated, 48RU	XVGB0148



Zero U – Vertical Patch Panel and Connectivity

Features

- Attach to mounting rails
- 24" wide enclosure can accept up to four x 7 positions vertical patch panels
- 30" wide enclosure can accept up to four x 14 positions vertical patch panels
- Vertical patch panels are fully compatible with Belden copper and fiber connectivity (FX UHD, FX Ultra Frames and Cassettes)



Description	Belden Part Number
-------------	--------------------

Zero U – Vertical Patch Panel and Connectivity

Vertical Patch Panel (7 positions), Compatible with 24" and 30" Wide XS Enclosures	XZUK01
Vertical Patch Panel (14 positions), Compatible with 30" Wide XS Enclosures	XZUK02
FXUHD KeyConnect Frame Blank	FFZH00BB
FXUHD KeyConnect Frame 6-Port, Black (Empty)	FFZH06KC
FXUHD KeyConnect Frame 8-Port, Black (Empty)	FFZH08KC
10GX KeyConnect Couplers for Vertical Mount Patch Panel, 8-Port, Black	AX105366
CAT6+ KeyConnect Couplers for Vertical Mount Patch Panel, 8-Port, Black	AX105367

Belden Zero U - Vertical patch panel allows for optimal use of mounting space into XS Series enclosures by providing high-density connectivity options along the equipment mounting rails.